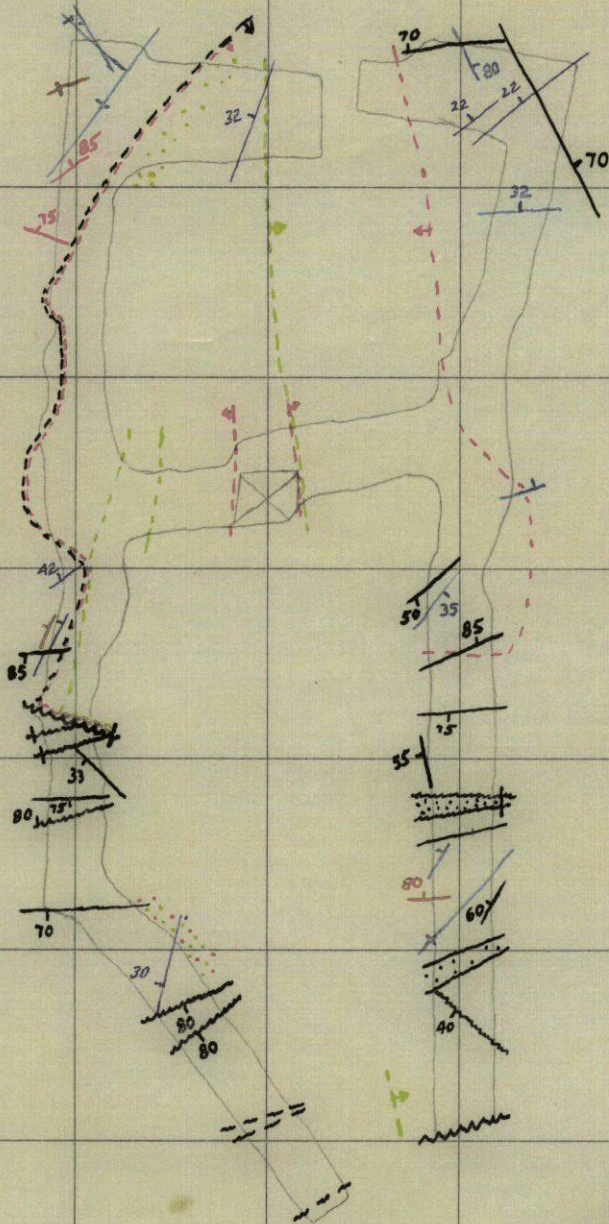
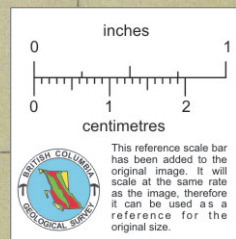


LEGEND

- Quartz-Orthoclase vein
- Quartz vein containing dissem. moly
- Limit of common moly in breccia
- Quartz vein banded with moly
- Quartz vein
- Limit of abundant dark fragments
- Scattered dark fragments
- Limit of breccia
- slip or water-bearing fracture
- Shear or narrow gouge zone; ³ weak
- wide gouge zone.



5000 N



93A001
BOSS MOUNTAIN
5085 Sub-level
1" = 30'

Geology & part of outline by
G.E.P. Eastwood, Aug 1-2, 1964

5000 E

013758