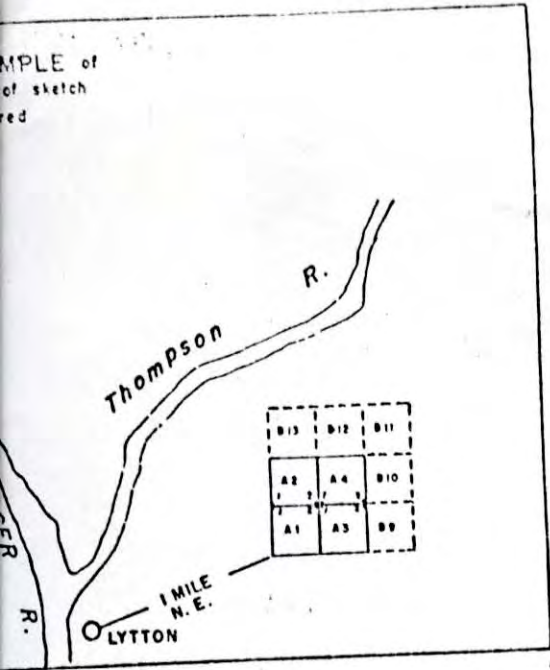


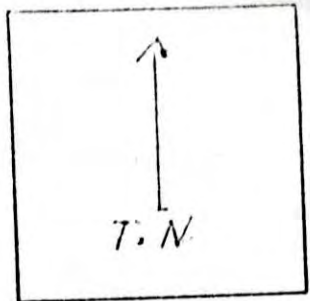
92P-50

MPLE of
of sketch
red



Claims must be tied by direction and distance to at least one, preferably more than one, topographical feature, or to a land lot, section, township, or other recognizable point on printed maps of the district. Relationship of previously located claims should also be shown.

N.B. — The sketch for a group of claims may be placed on one affidavit.

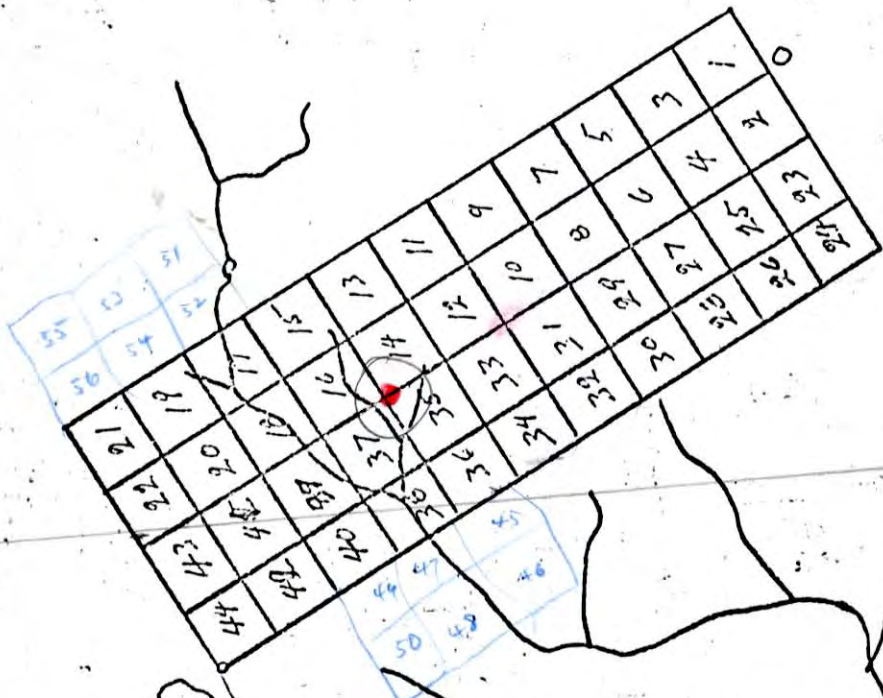
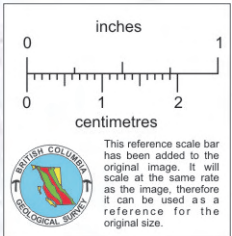


INDICATE NORTH
(True or Magnetic)

AJS 1-56

All AJS claims fort.

Kamloops
Sept 15/68
Map 921/16W
+ 11A
71499-542
9/12/68 JO.



72334
71498
approx 5100'

71499-542
921/16W
+ 11A

4 Mile
2 N.W.

013567

○ Kamloops