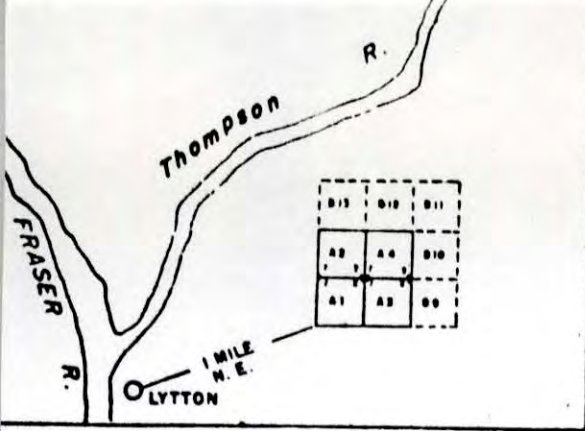


be shown.
N.B. — The sketch for a group of claims may be placed on one affidavit.

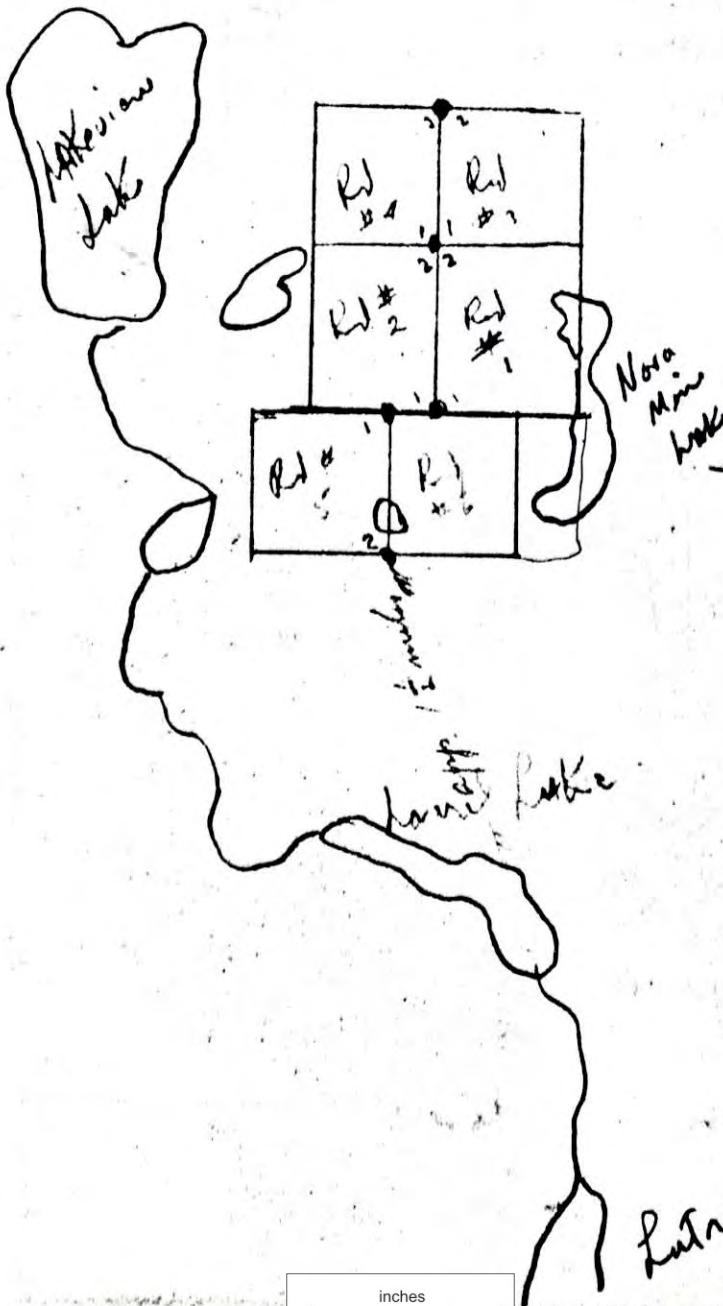
INDICATE NORTH
(True or Magnetic)



92P/9W

92P 027

Red 1-6
restaking of Aurora 1 to 6



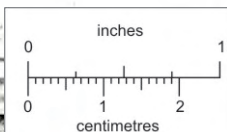
Kamloops
15/6/67

Map 30M
64388/93
JRW
7/7/67

Putnamville Lake.

120° 51.30'

64388/93



This reference scale bar has been added to the original image. It will scale at the same rate as the image, therefore it can be used as a reference for the original size.

013539