

B18 MBDS

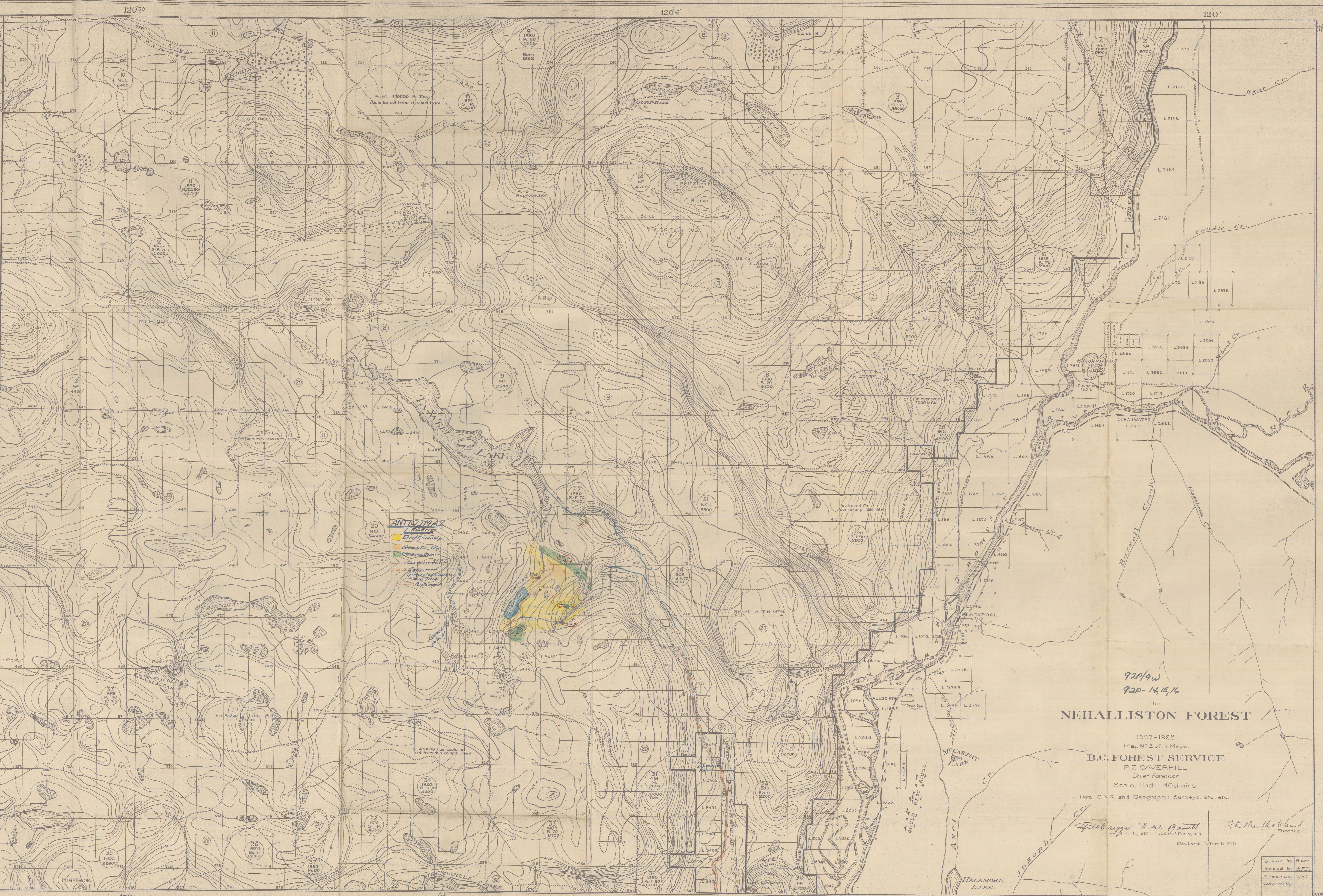
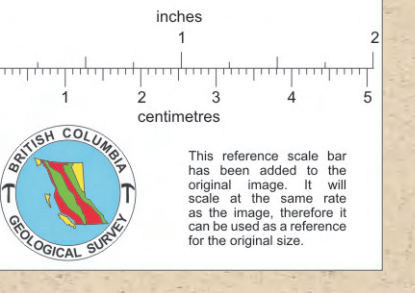
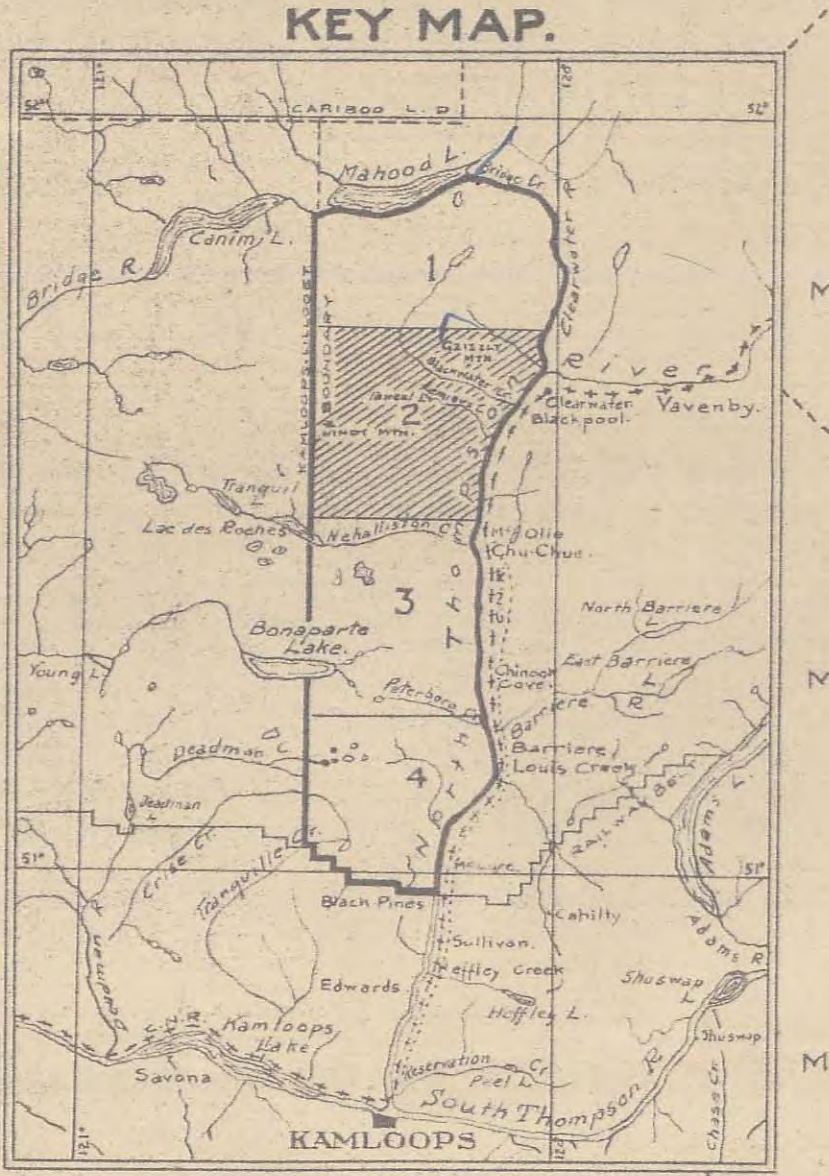
B18 MBDS

REFERENCE
 survey
 Mile posts on base lines
 and squared posts scribed
 on base lines, indicating
 13 mi. 40 ch.
 S and 17 mi. E of origin
 of survey which was
 intersection of Drewry's
 Kamloops-Lillooet by-
 line with the Cariboo L.
 by. line N. of Mahood L.
 Traverses
 Survey strips (not cut out)
 Section numbers
 These are unsurveyed
 sections numbered to
 correspond with summary
 of timber and other
 forest cover.
 Compartment boundary
 Sub-type boundary
 Grazing boundary
 Recommended boundary
 Forest ranger cabin
 Trails
 Automobile roads
 Wagon roads

Mature timber
 10MBM A over per acre
 Under 10MBM per acre
 Immature
 Non commercial cover
 Burn not restocking
 Non productive
 Swamp & water

Mature
 Compartment number
 Volume per acre
 Type
 Acres in compartment
 Immature
 Compartment number
 Date of reforestation
 Type and site index
 Acres in compartment

Abbreviations: S - Spruce F - Douglas Fir
 B - Silver Fir (Balsam) P - Lodgepole Pine
 A - Poplar N.C.C. - Non commercial cover
 N.P. - Non productive Rep. - Reproduction



922/9w
 920-14, 15, 16
 The
NEHALLISTON FOREST

1927-1928.
 Map No 2 of 4 Maps.
B.C. FOREST SERVICE
 P. Z. CAVERHILL
 Chief Forester
 Scale: 1 inch = 40 chains
 Data, C.N.R. and Geographic Surveys, etc. etc.

John A. Bennett
 Chief of Party, 1927
F. H. McKinnon
 Forester
 Revised March 1931

Drawn by	R.S.W.
Traced by	A.T.J.
Checked by	W.A.Z.
Coloured by	

013521