

920-43, 44
Eggs

Map 60
920/4E
CVJ
3170

Fishem Lake



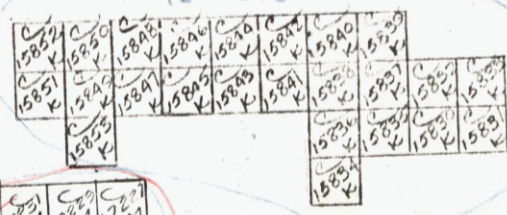
920-43

River

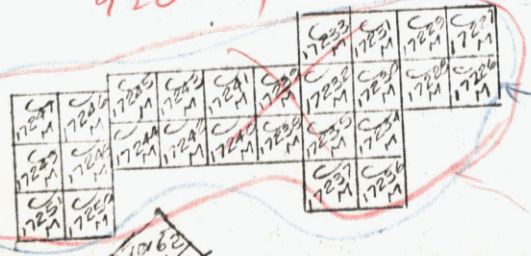


6190 Eggs
6968-70 Sugar, Pork, Beans
13212-14 Onion 1,3,2
16923-42 A1-A20
Copper Range

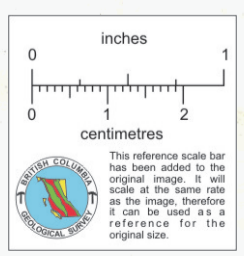
1B-6B
1C-6C
1D-6D



920-44



Rex 1-26
17226-51 Sp/68
Zenon Silver
formerly (164, 65)
Zenon, Zen, On
(Norande)



013337



920-43

Eggs

920/4E

1:50,000

SVZ

8/70

- L. 7831 Wash
- 7832 Cleanup
- 7833 Bear
- 7834 Grin
- 7835 Series Fr.
- 7836 Ham

CANADA

Sheet 92-O/5
45'

49

50'

51

52

53

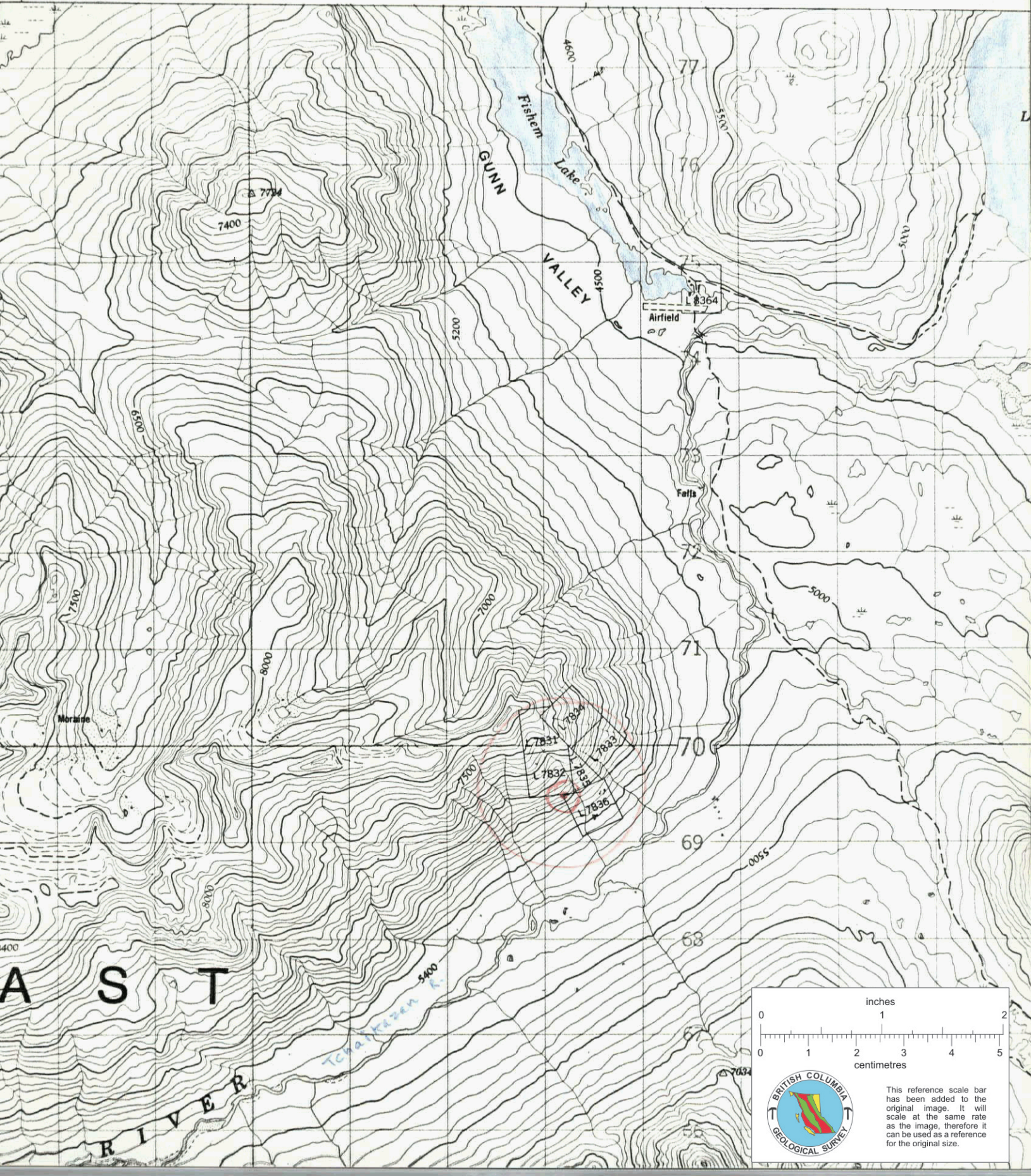
40'

54

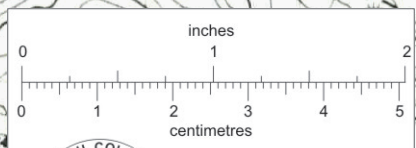
55

56

57



A S T
R I V E R



This reference scale bar has been added to the original image. It will scale at the same rate as the image, therefore it can be used as a reference for the original size.

Special Instructions _____

1 LEGGS,,,,,(920-43),,,,,(Fig. C, No. 109)s10M and +4pts,

2 LOCATION: Lat. 51! 11' Long. 123! 40'sroll back,

3 rm420,(920/4E)

4 o CLINTON M.D.,,Four and one-half miles west of Upper Taseko Lake,
5 on the Tchaikazan River, between 5,200 and 7,200 feet elevation.

6 oCLAIMS: WASH (Lot 7831), CLEANUP (Lot 7832), GRIN (Lot 7834), BEAR (Lot 7833),
7 HAM (Lot 7836), SAKES FR. (Lot 7835), EGGS, SUGAR, PORK, BEANS,
8 ONION 1 to 3, A 1 to 20.

9 oOWNER: H. Warren,sI, et al.sM,

10 oOPERATOR: RIO TINTO CANADIAN EXPLORATION LIMITED, Box 49108, Vancouver V7X,1G4.

11 oMETALS: Gold, copper, molybdenum.

12 oDESCRIPTION: Free gold and tellurides occur in quartz veins. Chalcopyrite and
13 molybdenite occur as disseminations and as fracture coatings in diorite
14 and altered volcanic rocks.

15 oWORK DONE: Surface diamond drilling, six holes totalling 1,500 feet on
16 Beans, Onion 1, A 13 and 20, and Sugar.

17 oREFERENCE:sI, B.C. Dept. of Mines & Pet. Res.,sM, GEM, 1972, p. 314.s10B,

18

19 s,

20 x

21

22

23

24

25

26

27

28

29

30

31

32

33

34