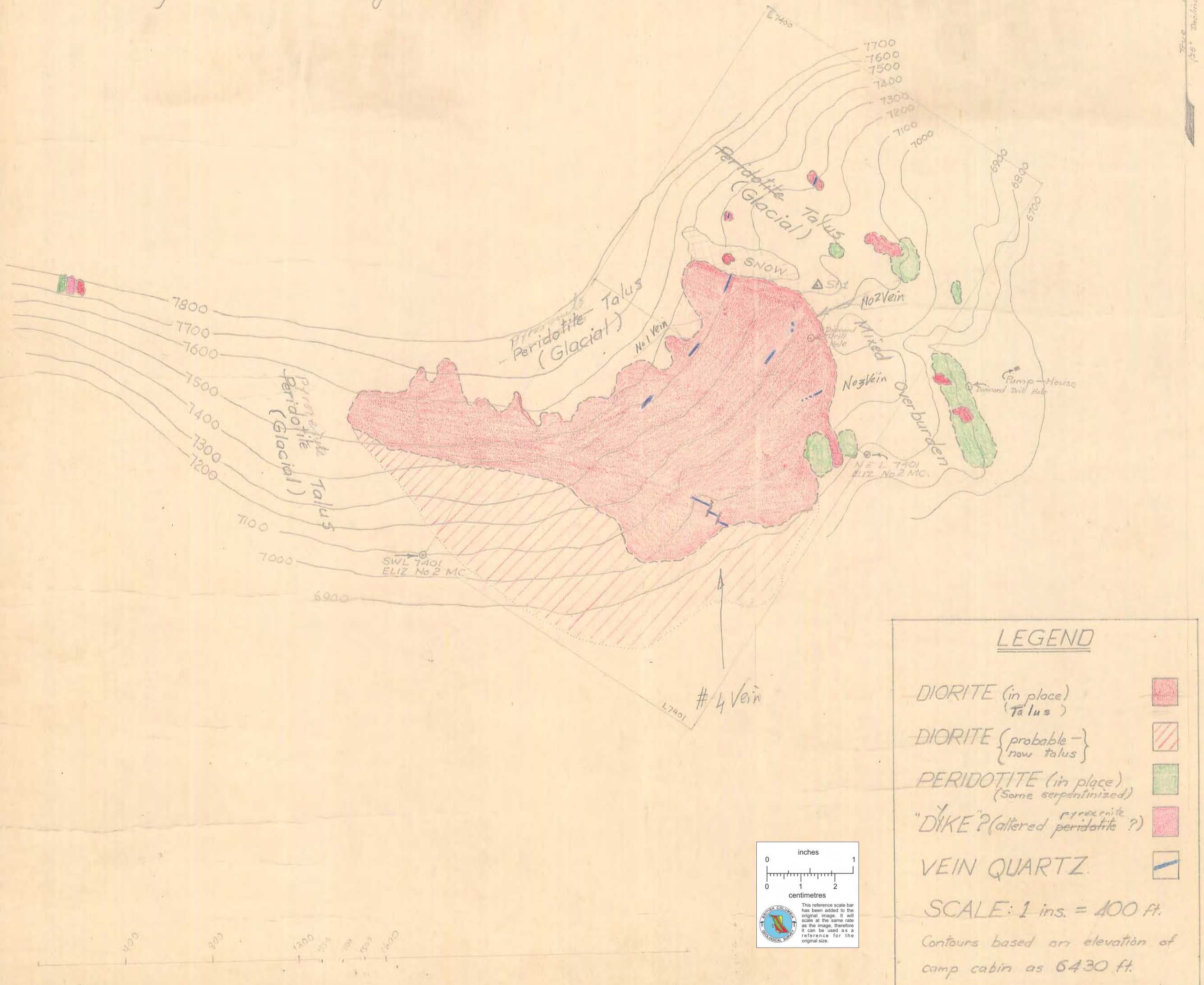


GEOLOGY

Of Area in immediate vicinity of the Bralorne Company showings on North Fork of Blue Cr. in the Bridge River District, B.C.

Aug 1946.

JW McCammon.

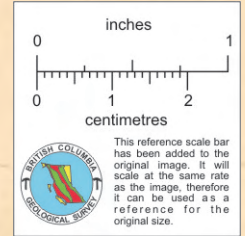


LEGEND

- DIORITE (in place)
- DIORITE (Talus)
- PERIDOTITE (in place)
- (Some serpentinized)
- "DIKE" (altered peridotite?)
- VEIN QUARTZ

SCALE: 1 ins. = 400 ft.

Contours based on elevation of camp cabin as 6430 ft.



True North (65° Declination Correction)

Cabin El 6430 ft.