

TCHAIKAZAN EXPLORATION SERVICES LTD.

013091

P.O. BOX 41, TATLA LAKE, B.C. CANADA VOL 1V0 TEL: (604) 476-1104

managing the properties of **Ottarasko Mines Ltd.** Tel: 476-1180

092N 057

November 18, 1991

Mr. Larry D. Jones
Senior Geologist
Ministry of Energy, Mines
and Petroleum Resources
247 - 541 Superior Street
Victoria, B.C.
V8V1X4

Dear Larry,

I enclose an information package on ten showings which probably should be considered for inclusion in the Mineral Inventory File. These showings are all located on Ottarasko Mines' claims in map area 92N; since the Regional Geochemical Survey for 92N will be released next June, I imagine that you will be updating MINFILE for that area, so this would seem to be the right time to bring this stuff to your attention.

If you would like further details, hand samples or whatever before inclusion of any of these occurrences in the file, please let me know and I'll try to round up the required additional material.

Sincerely yours,



Louis M. Berniolles
Ottarasko Mines Ltd.

LOG NO: 911126	84
ACTION:	
FILE NO:	

PROPOSED MINFILE ENTREES - MAP 92N

092N 057

General comments

Each entry indicates

- a) the name of the showing, discovery date
- b) description of outcrop and mineralization
- c) summary geology
- d) map area and claim name
- e) AR # if work was documented
- f) names of government or private industry geologists who visited the property

Seven of these showings are in a very specific geologic environment, ie. Rusmore's "Ottarasko Volcanics", described in Current Research Part E, G.S.C. Paper 88-1E, p. 185-190. These rocks had previously been mapped by H. W. Tipper (G.S.C. Paper 68-33) and Roddick & Tipper (G.S.C. Open File 1163).

A) Champagne vein 1989

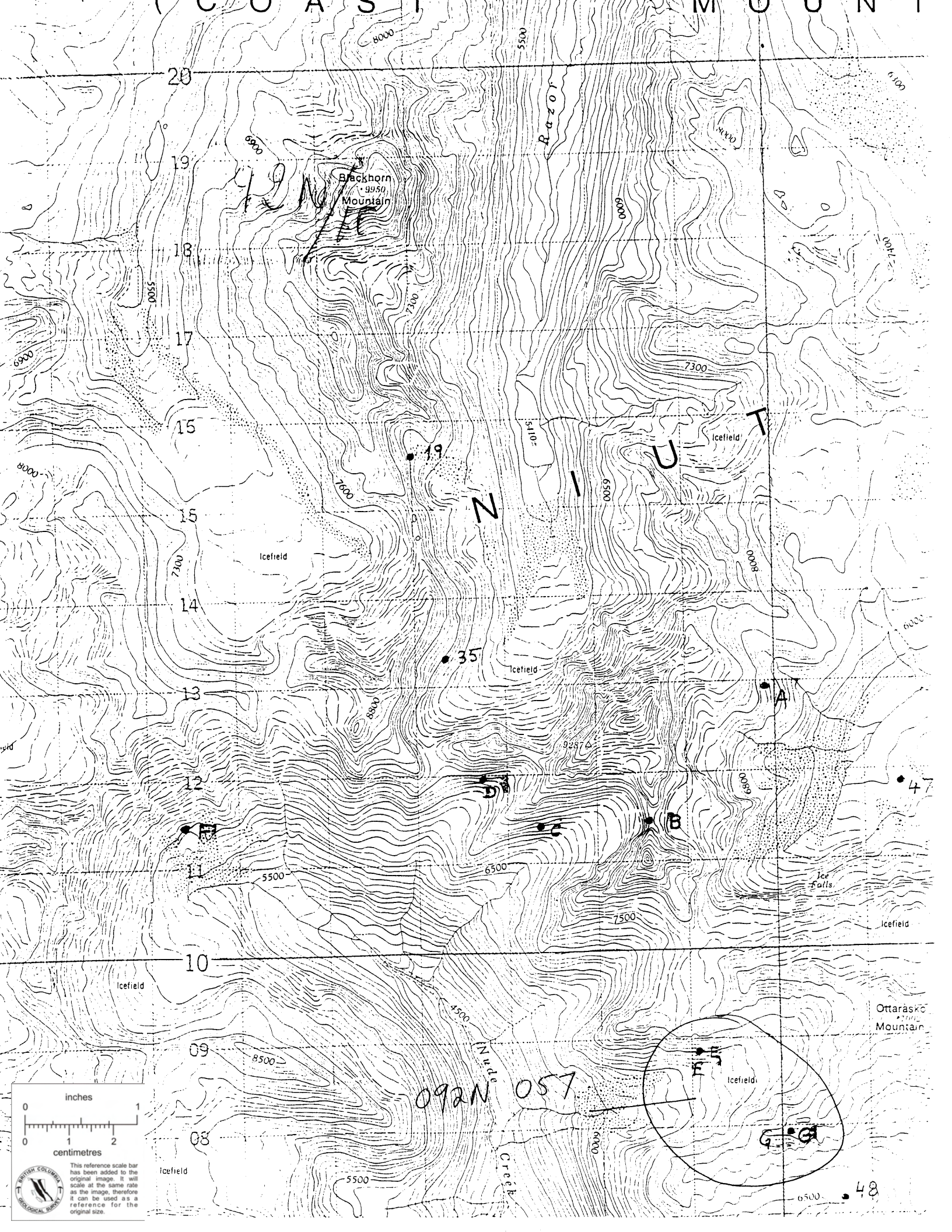
- Sub-horizontal gold-bearing quartz vein, 150+ m strike length, 30 cm to 1 m wide. Best assay 24.1 gr/tonne Au across 30 cm. Gold is associated with arsenopyrite and minor zinc and cadmium values.

- located in Ottarasko volcanics above the Blackhorn Thrust fault system; a large dyke intrudes the volcanic package nearby.

- 92N/10E - claim HW3
- no published work
- Ron Wells (Placer Dome)

B) Ridge showing 1990

- Stockwork zone approximately 15 m x 75 m in outcrop. Float quartz blocks plucked and carried by two glaciers flowing from a ridge in the SE and SW directions indicate high grade values of gold associated with chalcopyrite and tellurium.



20
19
18
17
15
14
13
12
11
10
09
08

Backhorn
9950
Mountain

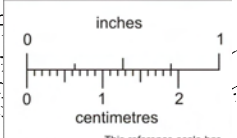
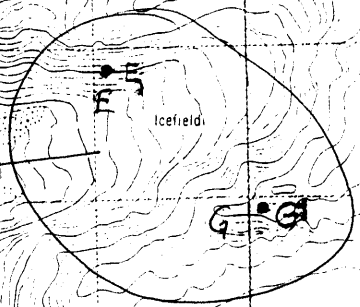
Razor

19

35

47

192N 057



This reference scale bar has been added to the original image. It will scale at the same rate as the image, therefore it can be used as a reference for the original size.



Ottarasko
Mountain

48

sample to the SW 1.730 OPT Au, 3.54 OPT Ag, 1.28% Cu, 109 PPM Te
sample to the SE 1.325 OPT Au, 4.80 OPT Ag, .69% Cu

- located in Ottarasko volcanics above the Blackhorn Thrust.
- 92N/10W - claim HW4
- AR19355
- Ron Wells (Placer Dome)

C) The Stack 1990

- Stockwork zone partially accessible in a draw, vertical extent approximately 50 m, estimated quartz percentage 8% (from measured intersect), best assay of quartz material 41.6 gr/tonne Au, average quartz assay 21 gr/tonne Au. The enclosing greenstone has not been sampled. The quartz is white and contains no sulphides or arsenic.

- located in Ottarasko volcanics above the Blackhorn Thrust.
- 92N/10W - claim HW5
- no published work
- Ron Wells (Placer Dome)

D) V5 vein 1991

- Sub-horizontal rusty weathering quartz vein 60+m long, 1+ m wide. Best assay 12.7 gr/tonne Au across 1 m. Gold values associated with minor arsenic, zinc and cadmium.

- located in Ottarasko volcanics above the Blackhorn Thrust.
- 92N/10W - claim HW5
- no published work
- Ron Wells (Placer Dome)

E) Main Valley showing 1988

092N 057

- Quartz and sulphide filled tension cracks in sub-horizontal tuff bed located on cliff face at 7500'. Samples were taken from float blocks on the lateral moraine of the glacier, below the outcrop (see photo). Gold, silver and copper values.

sample 1 8.2 gr/t Au, 23.7 gr/t Ag, 3.04% Cu
sample 2 15.3 gr/t Au, 5.1 gr/t Ag, .86% Cu

092N 057

- located in Ottarasko volcanics above the Blackhorn Thrust.
- 92N/10W - claim AT3
- AR18022
- T. Schroeter, C. Lund, R. Wells

F) RR vein (Russian Roulette) 1990

- Quartz vein, length over 100 m, width up to 1 m. Quartz with fine-grained pyrite. Best assay 6 gr/t Au. This vein cannot be sampled in place because of location under the drop-off point of a hanging glacier.

- located in Ottarasko volcanics above the Blackhorn Thrust.
- 92N/10W - claim HW9
- Ron Wells (Placer Dome)

G) Copper ridge 1987

092N 057

- Copper values in quartz veins (chalcopyrite, cuprite, malachite, azurite) and in sulphide veins or flow-bands within Ottarasko volcanics.

sample 1 in quartz vein .73% Cu
sample 2 in sulphide bands .40% Cu

- located in Ottarasko volcanics above Blackhorn Thrust.
- 92N/10W - claim AT3
- AR16688, AR18022
- C. Bell (Inco), R. Wells (Placer Dome)

H) Otto 1981

Limonite beds covering several acres (bog-iron type). Also small beds of manganese wad - coincident THM stream anomaly.

- located in Upper Cretaceous Kingsvale volcanics, between Ottarasko and Tchaikazan faults.

- 92N/10E - Otto claim
- no published work
- no visit

092N 057

November 27, 1991

Louis M. Berniolles
Ottarasko Mines Ltd.
c/o Tchaikazan Exploration Services Ltd.
PO Box 41
Tatla Lake, B.C.
V0L 1V0

Dear Mr. Berniolles:

Re: Ten showings - Map Area 92N

Thank you for your information package covering ten showings on map area 92N.

This map sheet area is currently being updated by Chris Rees. I have forwarded your information to him for incorporation into our MINFILE database.

Upon completion of coding by Chris Rees, we would like to forward copies of these occurrences for your review. The MINFILE team appreciates your contributions to the project and we look forward to your comments. Thank you again.

Yours truly,

L. Jones
Senior Geologist
MINFILE

LD/ld