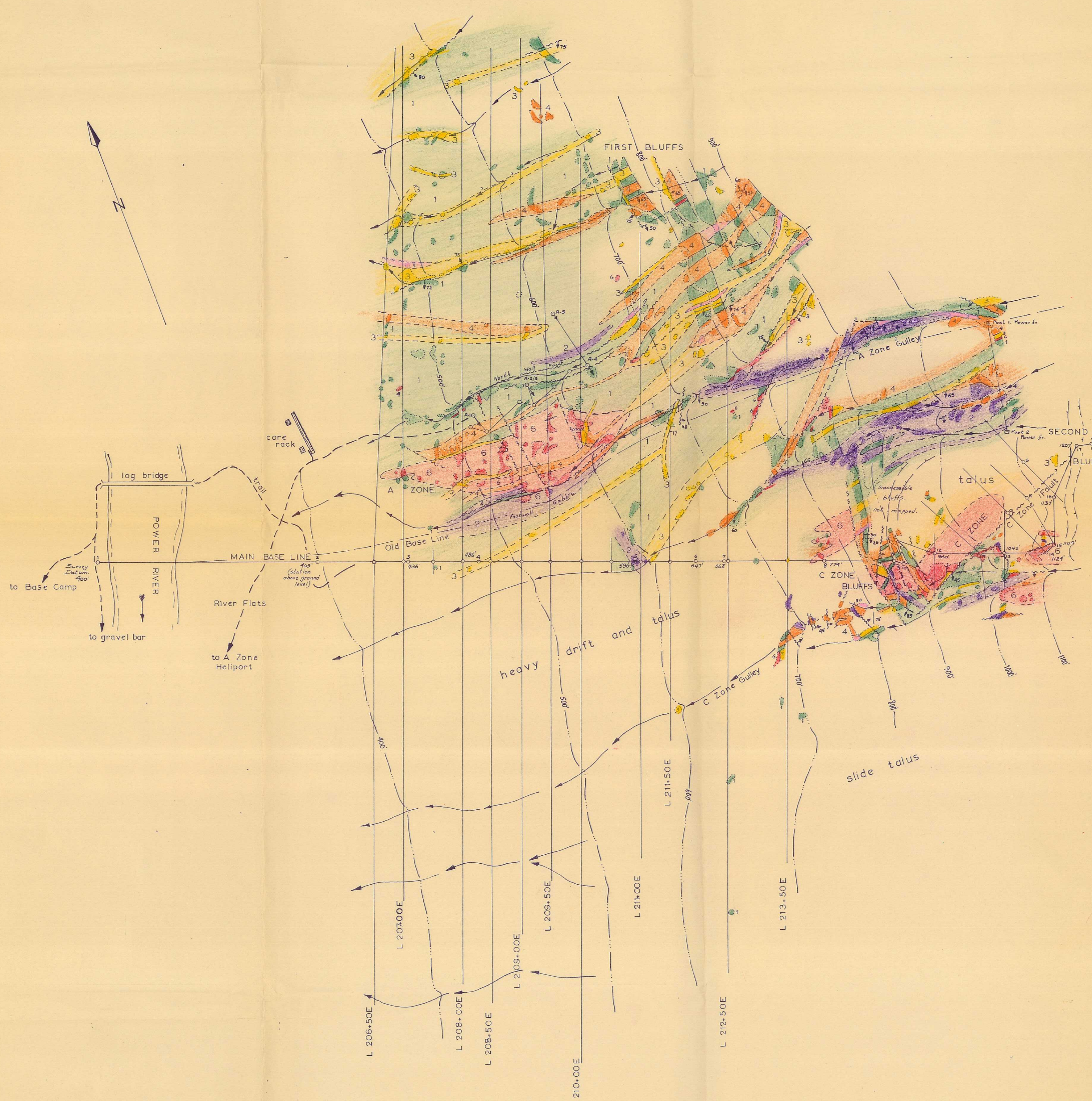


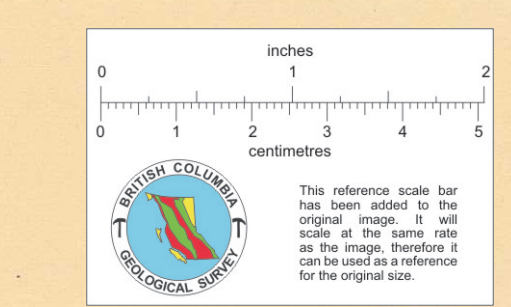
200E 205E 210E 215E 220E 225E 230E 235E

210N  
205N  
200N  
195N  
190N



**LEGEND**

- Magnetite, generally almost massive, occasionally disseminated with sparse sulphides & other minerals. C Zone contacts inferred from magnetite data.
- Diorite, pale green.
- Andesite, fine grained equivalent of unit 4.
- Gabbro, medium to coarse grained.
- Basalt, fine to coarse grained, may include some of unit 6. Many porphyritic and/or amygdaloidal phases.
- Outcrop.
- Contact, observed, with altitude & inferred.
- Fault, observed, with sense of slip & inferred.
- Survey station & survey line. Spot elevations at survey stations based on arbitrary datum of 900' at Mt. I.
- Diamond drill hole.
- Clim post.
- Contour lines at 100' intervals, in part based on spirit leveling survey, in part on aneroid survey in conjunction with mapping.
- Seasonal stream course.



SCALE  
One Inch = 100 Feet

RIO TINTO CANADIAN EXPLORATION LIMITED  
 POWER RIVER PROJECT, ALBERNI M.D.  
 BRITISH COLUMBIA  
**MAIN GRID AREA**  
**GEOLOGICAL PLAN**  
 JMN. 5 DEC. '62. DWG. PR-F62-3  
**012100**