

DEPARTMENT OF MINES
304 FREDERICK ST.
VANCOUVER

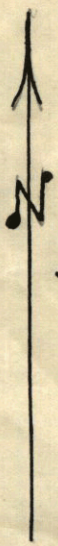


See new
map.

inches
0 1

centimetres
0 1 2

This reference scale bar has been added to the original image. It will scale at the same rate as the image, therefore it can be used as a reference for the original size.



Scale: 1" = 100'

92K/2W

92K-75

McLean No 3.

Goes into bushes
overburden.

011973