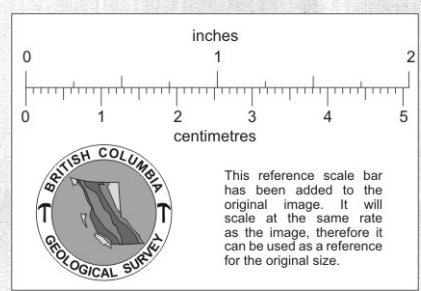
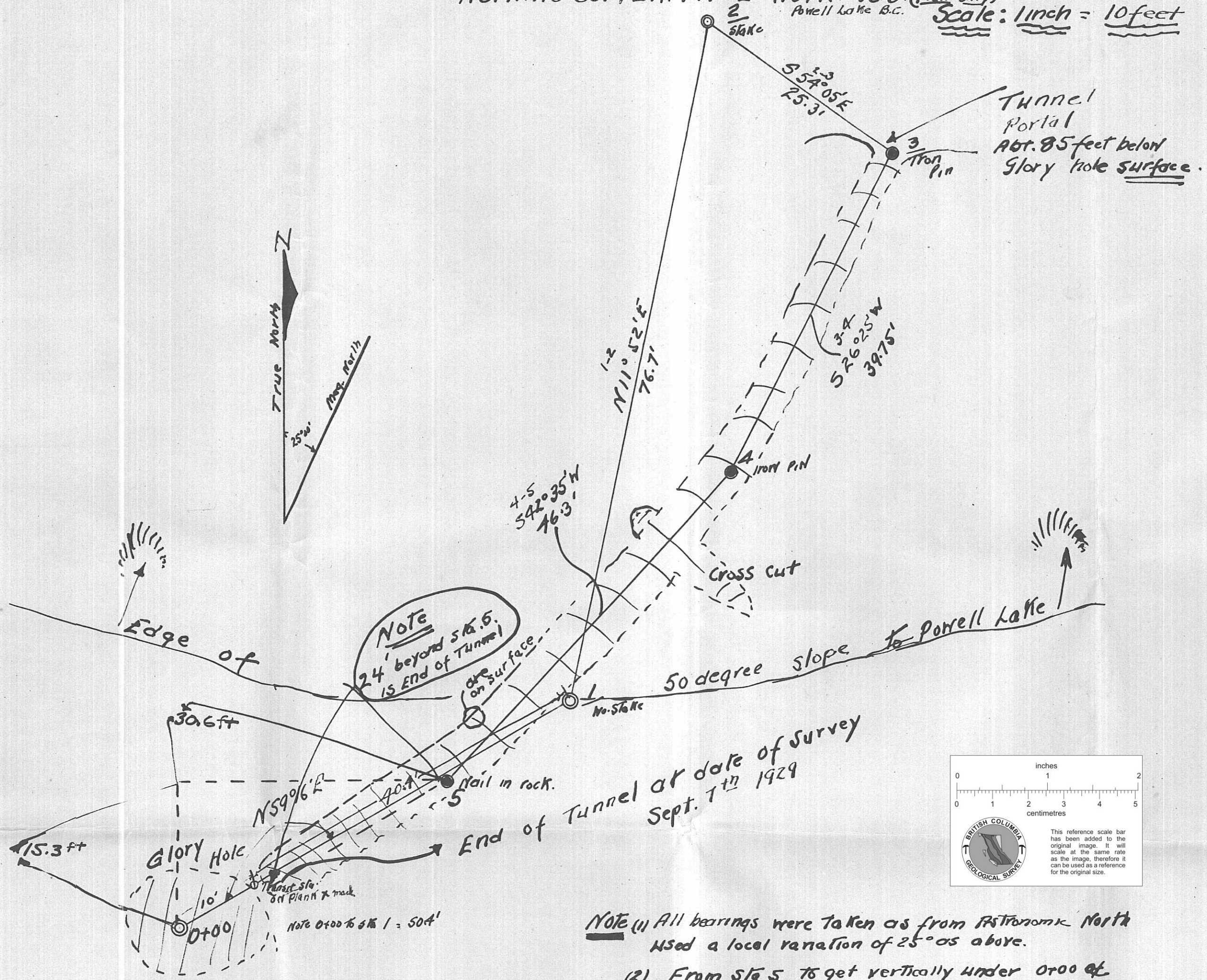
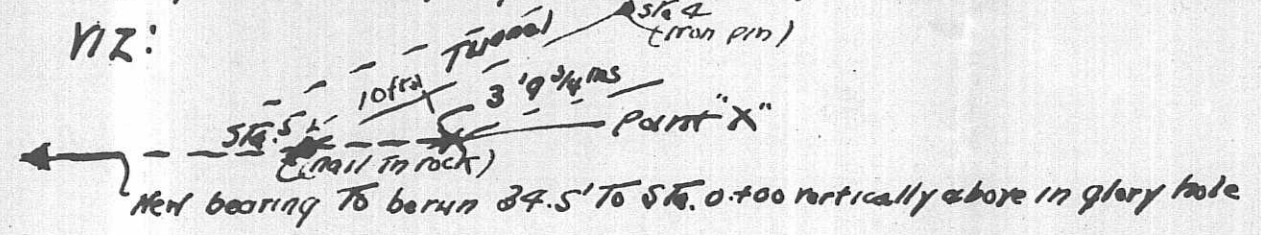


ROMANO COPPER MINE WORKINGS. (plan only)
 Powell Lake B.C. Scale: 1 inch = 10 feet

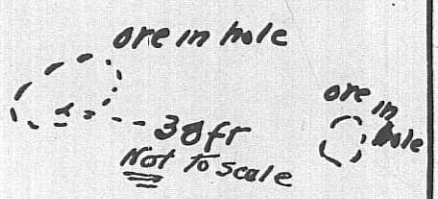
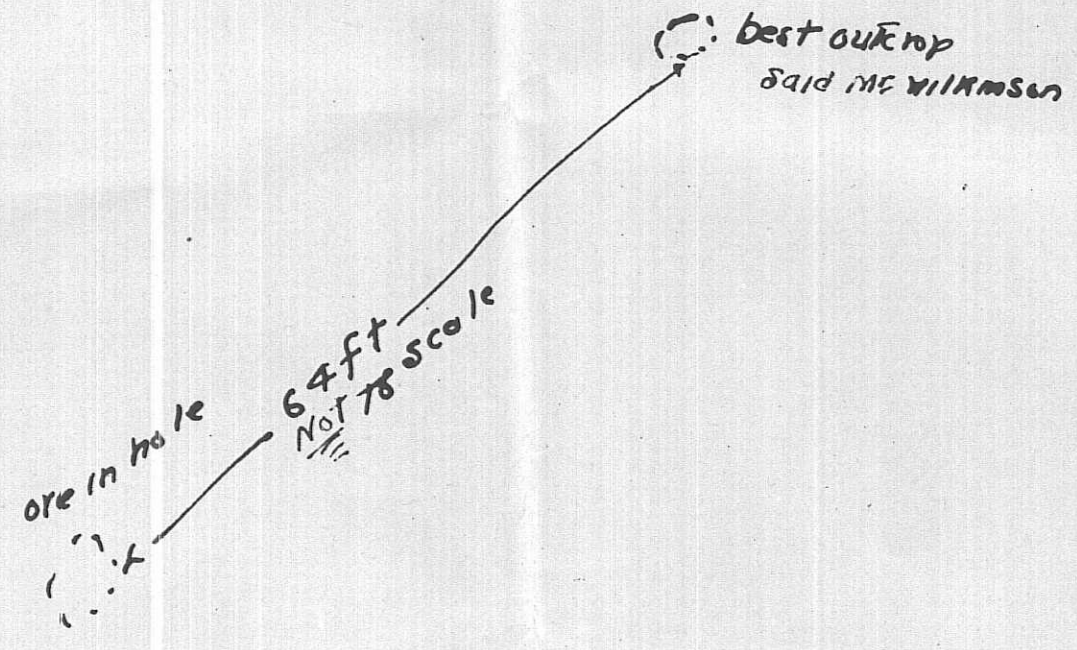


NOTE (1) All bearings were taken as from Astronomical North used a local variation of 25° as above.

- (2) From Sta 5 to get vertically under 0+00 at the glory hole go 39.5 feet on a bearing of S 63° 26' N or 15.3 ft South and 30.6 ft West.
- (3) The present end of the Tunnel is approx. 11.5 ft. East and 3 ft. North of 0+00 of the glory hole ∴ another 10 feet of Tunnel should land vertically under the glory hole.
- (4) To produce Present Tunnel from Sta 5 sight from Sta 5 toward Sta 4 and measure off 10 feet on line from Sta 5 towards Sta 4 lay off 3 ft. 9 3/4 inches at right angles to the right join this point with Sta 5 and produce S.W. from Sta 5. This gives the angle for the bearing S 63° 26' N viz:



- (5) Where no distances are given to ore holes on surface the distances are to scale namely 1 inch = 10 feet in all cases the bearings are correct i.e. direction.
- (6) 15° dip for 85 ft runs 23 ft
 30° " " " " 50 ft.



92K/1W