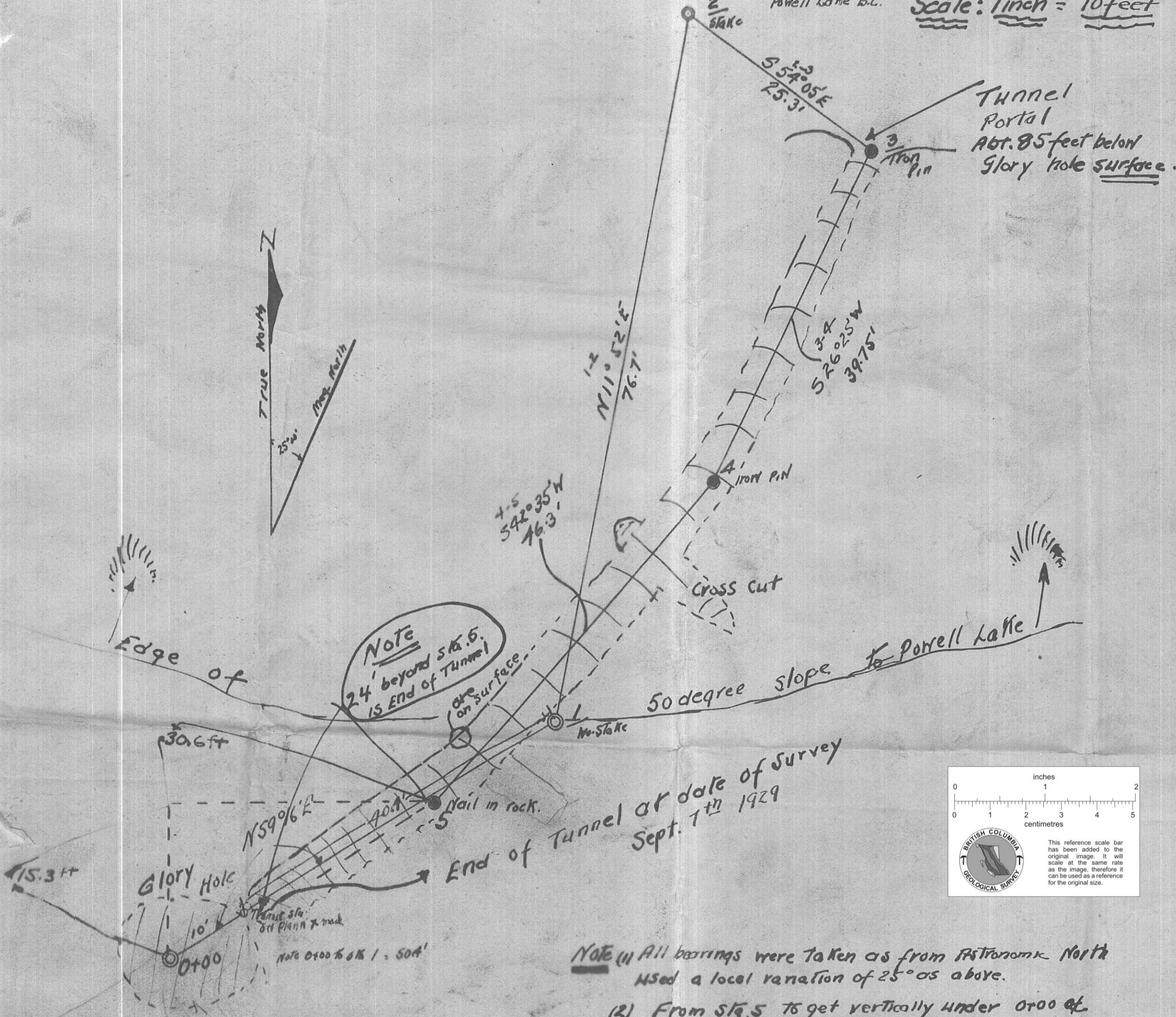


ROMANO COPPER MINE WORKINGS (plan only)

Powell Lake B.C.

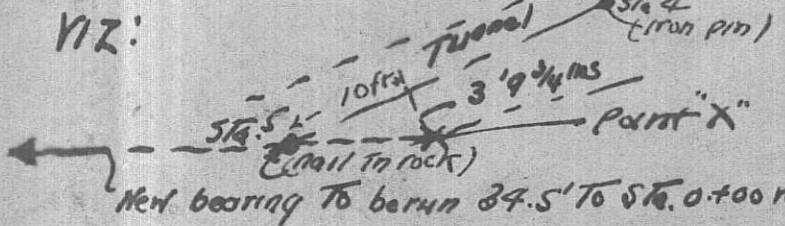
Scale: 1 inch = 10 feet

92K/1W

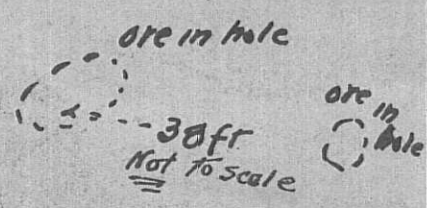
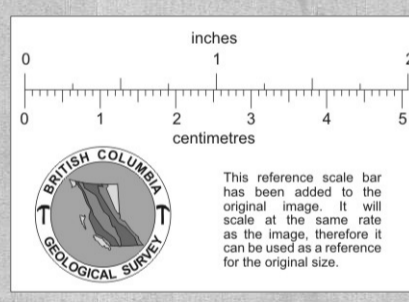


Note (1) All bearings were taken as from Astronomical North used a local variation of 25° as above.

- (2) From Stk 5 to get vertically under 0+00 of the Glory hole go 34.5 feet on a bearing of S 63° 26' N or 15.3 ft South and 30.6 ft West.
- (3) The present end of the tunnel is approx. 11.5 ft. East and 3 ft. North of 0+00 of the glory hole ∴ another 10 feet of tunnel should land vertically under the glory hole.
- (4) To produce present tunnel from Stk 5 right from Stk 5 toward Stk 4 and measure off 10 feet on line from Stk 5 towards Stk 4 lay off 3 ft. 9 1/4 inches at right angles to the right join this point with Stk 5 and produce S. W. from Stk 5. This gives the angle for the bearing S 63° 26' N viz:



- (5) Where no distances are given to ore holes on surface the distances are to scale namely 1 inch = 10 feet in all cases the bearings are correct i.e. direction.
- (6) 15° dip for 85 ft runs 23 ft  
30° " " " " 50 ft.



011925

Jan. J. Fullerton B.C.R.P. Powell River Sept. 8th 1929.