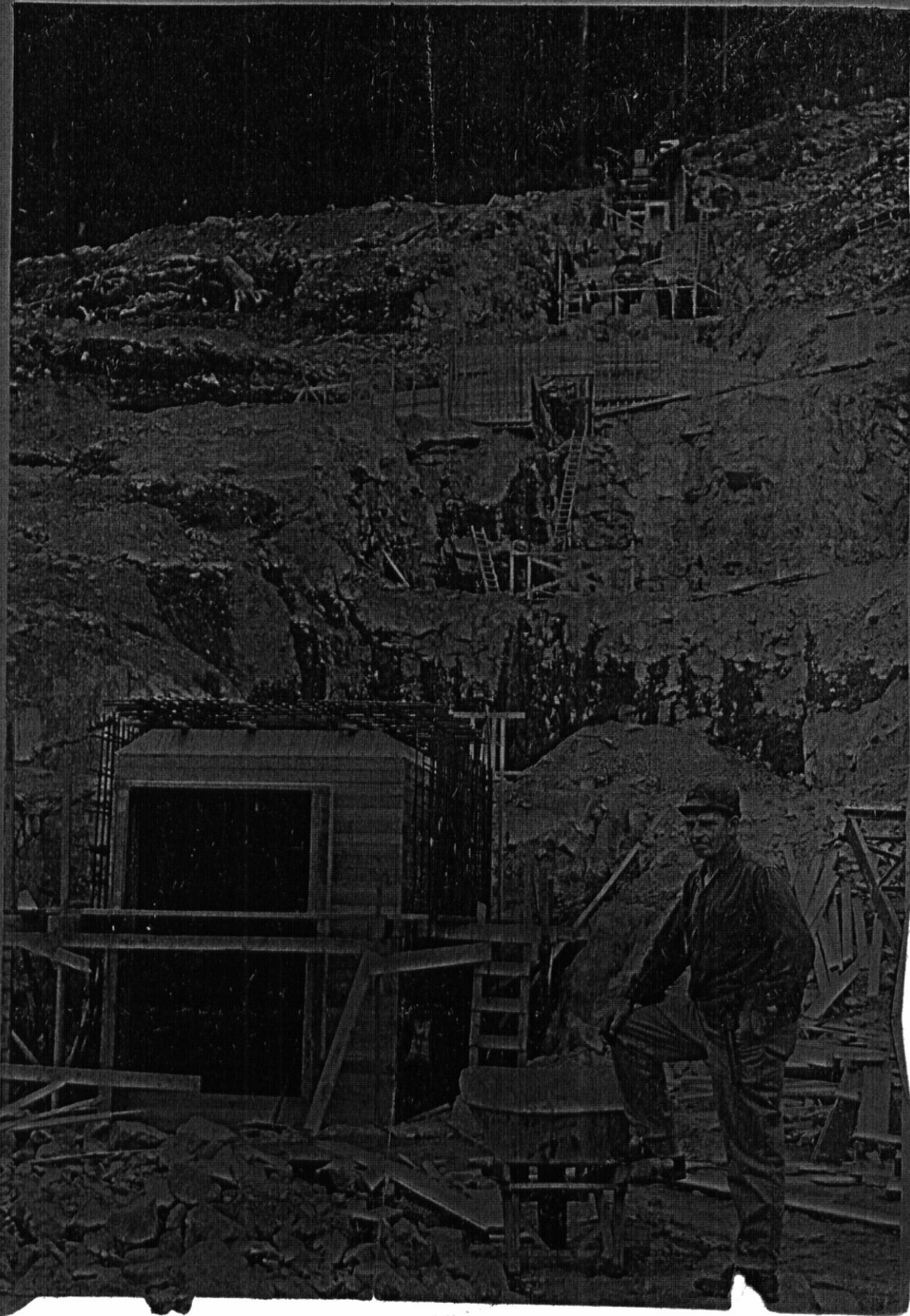


011908

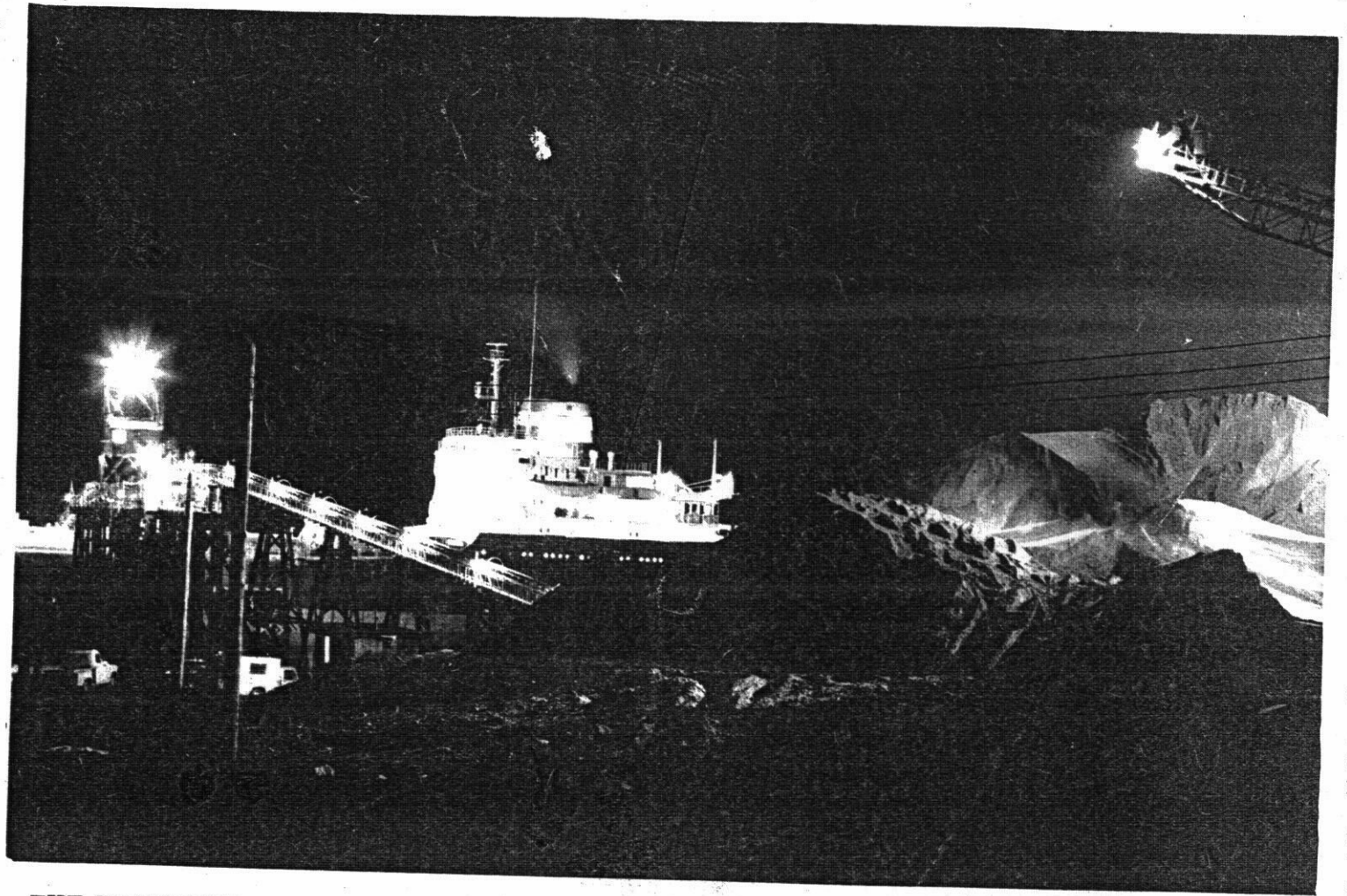
2 The Campbell River Courier Wed., July 7, 1965



92K 043



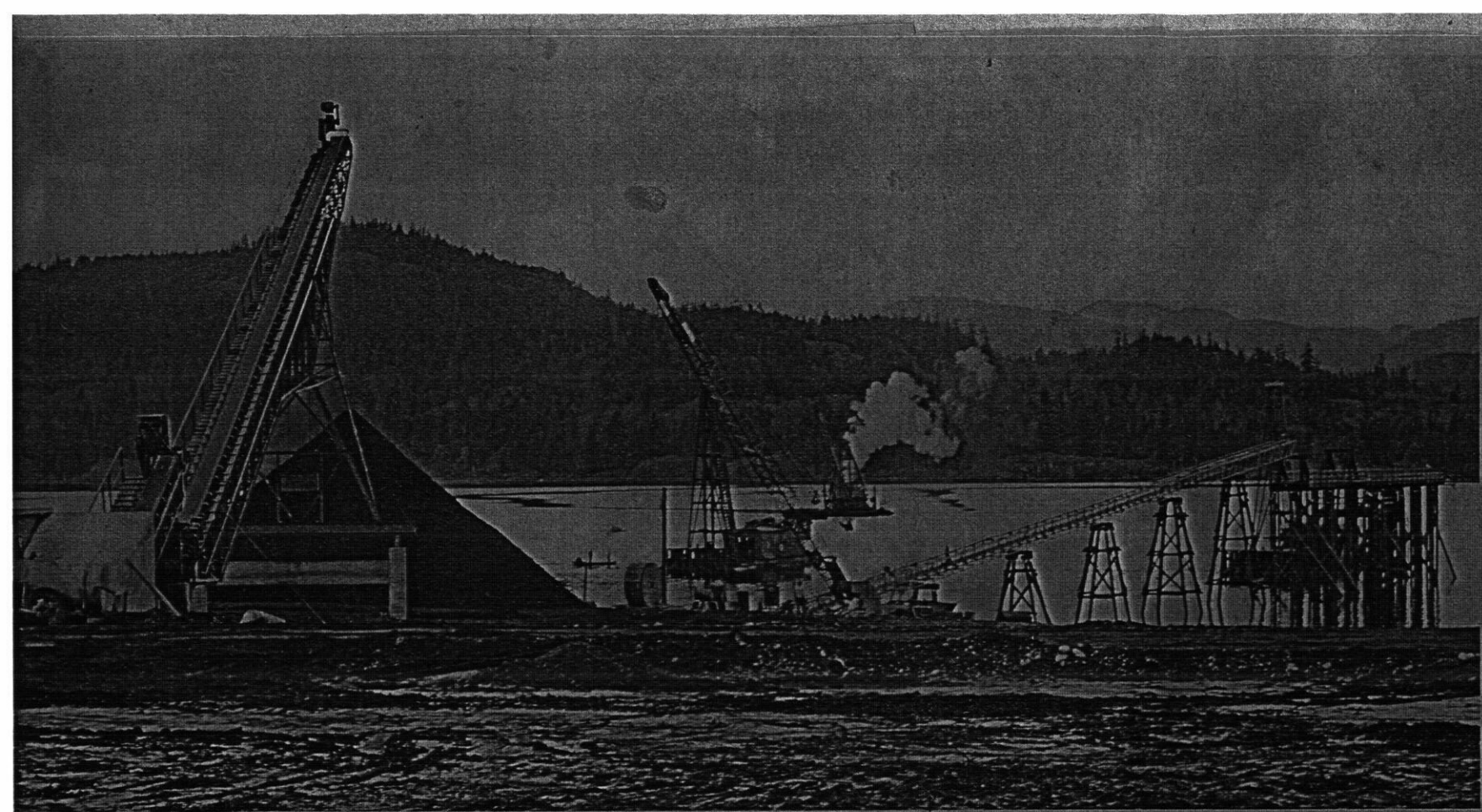
HENRY HILL
...drill results



THE FIRST SHIP to be loaded with ore from Orecan Mines is the Helvig, now docked at Menzies Bay. Courier photographer Brian Kyle shot this dramatic

photo last night as the ship loads around the clock. The Helvig, of Danish registry, is destined for Japan.

92K 043



STOCKPILING AT MENZIES BAY. Orecan Mines will stockpile about 400 tons of iron ore concentrate daily between now and next March or April ready for shipment to Japan. The site can accommodate about 35,000 tons at the present time, but provisions have been made for expansion of the storage area should it become necessary. Ore is shipped by truck from the mine near Kelsey Bay.

92K043