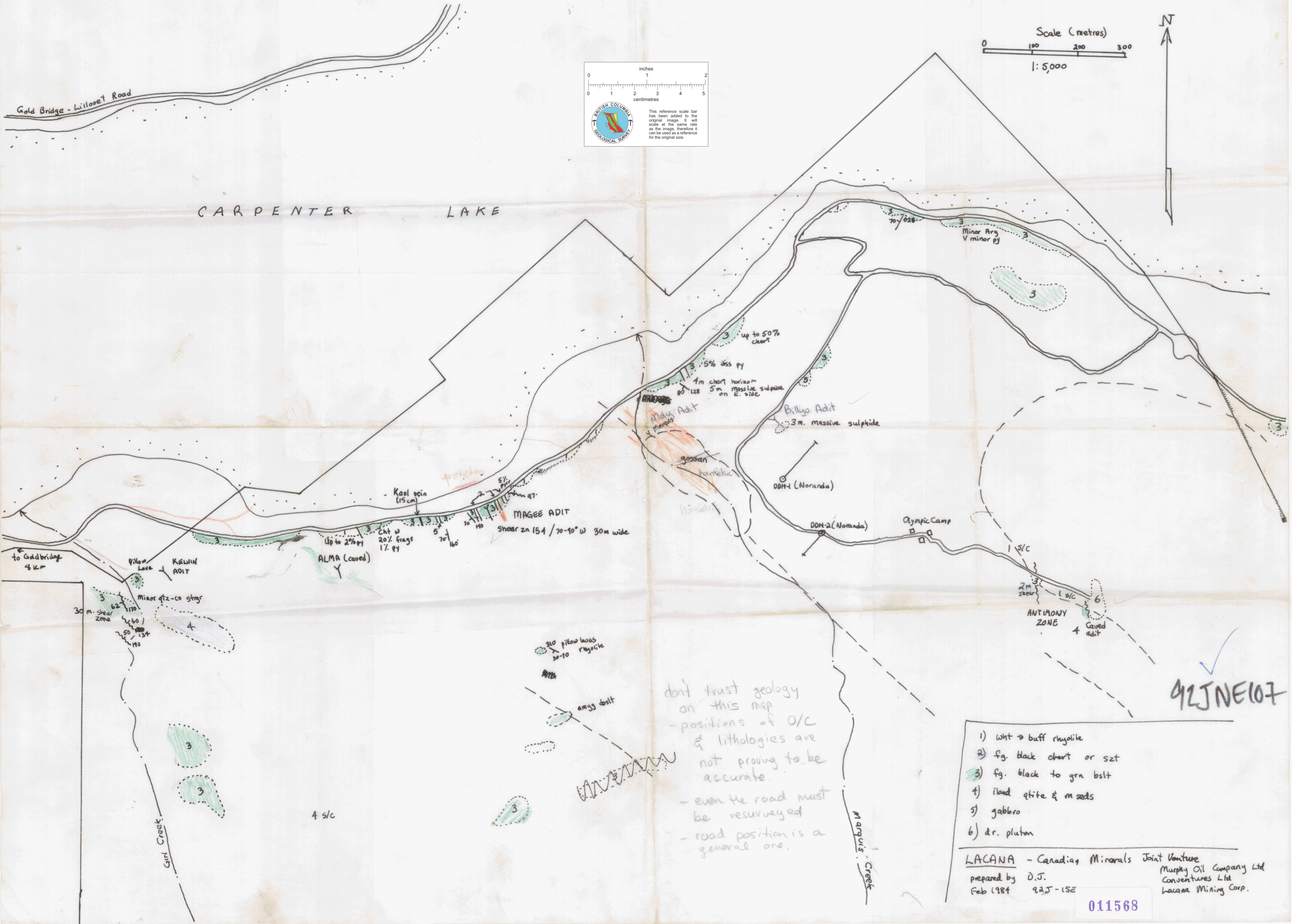
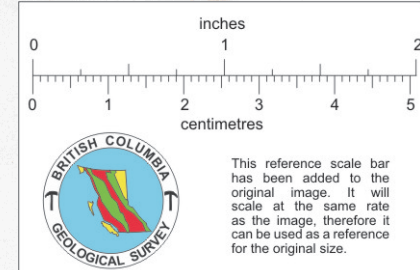
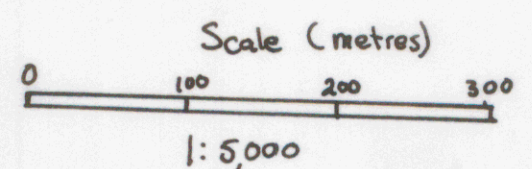


Gold Bridge - Lillooet Road

CARPENTER LAKE



don't trust geology on this map  
 - positions of O/C & lithologies are not proving to be accurate.  
 - even the road must be resurveyed  
 - road position is a general one.

92JNE107

- 1) wht → buff rhyolite
- 2) fg. black chert or sst
- 3) fg. black to grn bslt
- 4) iload qtzite & m seds
- 5) gabbro
- 6) dr. pluton

LACANA - Canadian Minerals Joint Venture  
 prepared by D.J. Murphy Oil Company Ltd  
 Feb 1984 92J-15E Conventures Ltd  
 Lacana Mining Corp.

011568