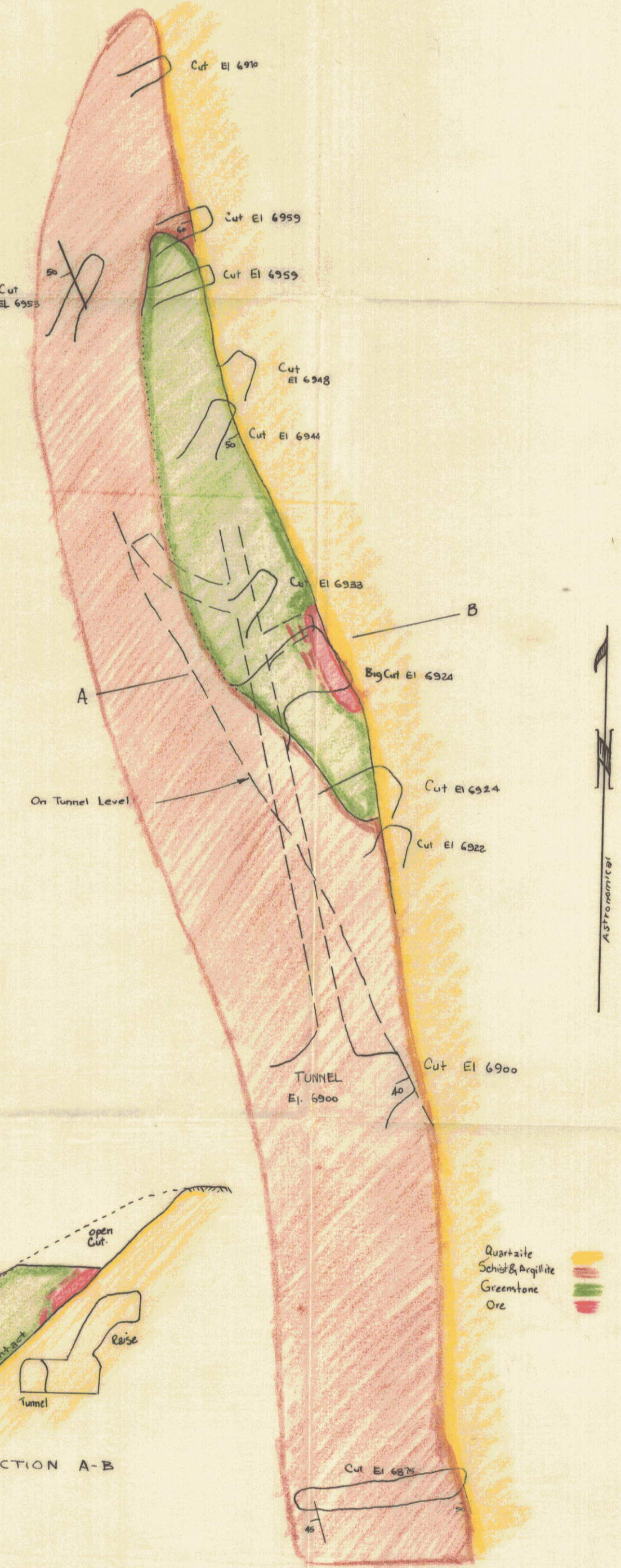


Quartzite
Schist and Argillite
Greenstone
Deep soil
Contacts Certain
Contacts Uncertain

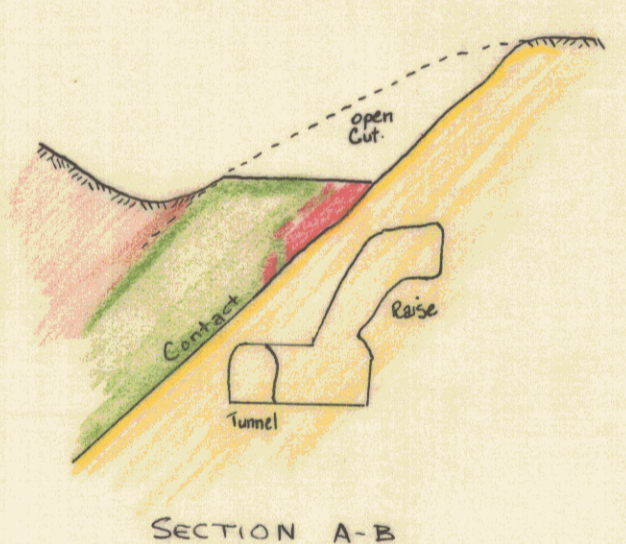
Rough Compass Survey

CENTRAL PART
MINTO B.C.



INCHES
0 1 2
CENTIMETERS
0 1 2 3 4 5

This reference scale bar has been added to the original image. It will scale to the same size as the image, therefore it can be used as a reference for the original size.



SECTION A-B

MAIN WORKINGS
LILLOMER GROUP
MINTO, B.C.

Compass Survey

SCALE 1" = 20'
CC Starr Aug. 1937

PROPERTY FILE

925/15W
925-41

011371