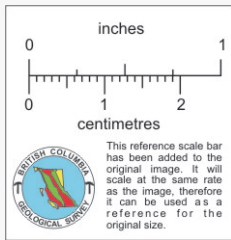


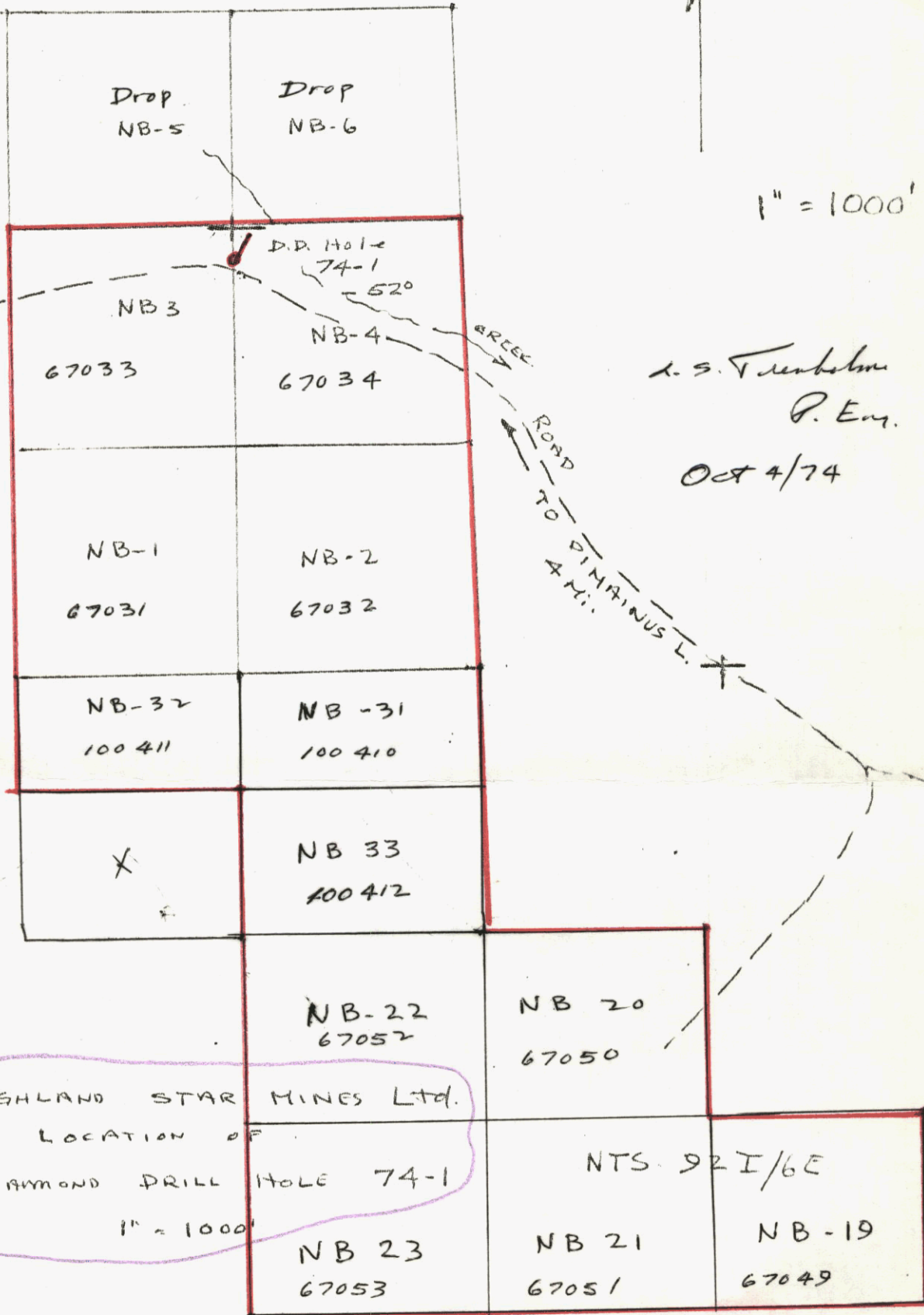
011023

92 I/6E  
"N.B."  
92 I/SW-67.



1" = 1000'

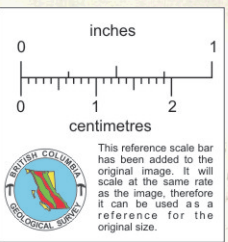
MERV 17 18  
MERV 19 20



A. S. Trenholm  
P. Eng.  
Oct 4/74

HIGHLAND STAR MINES LTD.  
LOCATION OF  
DIAMOND DRILL HOLE 74-1  
1" = 1000'





HIGHLAND STAR MINES LTD.  
 GENERAL LOCATION MAP  
 NB GROUP  
 KAMLOOPS M.P. B.C.  
 SCALE: 1:50,000  
 SHEET: 92 I/E

50° 20'

5000'

15



## DIAMOND DRILL RECORD

COMPANY Highland Star Mines, Ltd. . . . . PROPERTY NB Group Kamloops M.D. B.C. . . . . HOLE 74-1 . . . . .

LOCATION: Lat. 50° 22' N Claim NB-4 . . . . . Azimuth 031° T . . . . . Page . . . . . One . . . . .  
 Dep 121° 05' W NTS # 67034 . . . . . Dip -52° . . . . . Start 28 Aug 74 . . . . .  
 EL 5250 . . . . . 92 E/6 E Drill Co. Connors . . . . . Finish 17 Sept 74 . . . . .

Depth	Formation	Sample		Assays		
		No.	Ft.	Oz. Au.	Oz. Ag	% Cu
0 - 87	NQ Casing	in overburden: recover 15 ft. boulders mainly gneodiorite, some coarse granite; a few pebbles of volcanics.		NO SAMPLES TAKEN		
87	Casing Show	finished; pull casing and re-start hole with tri-cone bit. Case to 114 feet.				
87 - 145	Overburden	Start drill with NO core.				
145 - 175	GRANODIORITE	Prominent black to greenish, stumpy euhedral to sub-hedral mafics (hornblende ?) to 5 mm. White to pale cream feldspar (plagioclase ?)		12 - 15%	Probably Chataway Phase, but poikilitic character not evident.	
		Quartz intimately intergrown with feldspar. Qtz. Scattered books of amber mica to 10mm.		60 - 75%		
		No metallic sulphides visible with X 10 lens. Few very small black metallic(?) specks; magnetite?			NOTE:	
		Numerous streaks and patches pink aphanitic (K-feldspar) alteration; replacement and veining			Hole collar is	
		Core surface has slight greenish cast; possibly due weak chloritization of hornblende; Core badly broken, but little chemical weathering.			200' south of #2P	
175 - 321	GRANODIORITE:	similar but less broken: decrease mica; some amorphous hematite as fracture surface coatings.			NB-4, NB-3.	
	211 - 213.5	Minor slip @ 25° with hematite along 6" K-spar dikelet.; some sericite.				
	213.5-321	Patchy, pervasive epidote <sup>?</sup> alteration alternating with pervasive pink patches; mica-coated seams more prevalent in less altered portions.			Note. Core stored at 6746 Marguerite St.	
	287 - 290	Rusty fracture parallel core			Vancouver B.C.	
321	End	Core broken throughout, but estimate 85% - 90% recovery.			L.S. Trenholme	
		NO METALLIC MINERALS IDENTIFIED; NO SAMPLES TAKEN.			Logged by L.S. Trenholme	
					October 2, 1974	