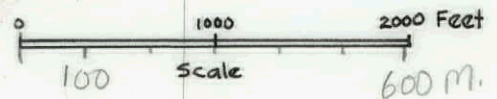
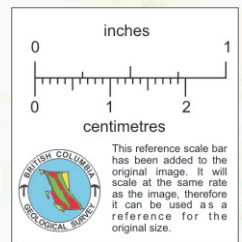
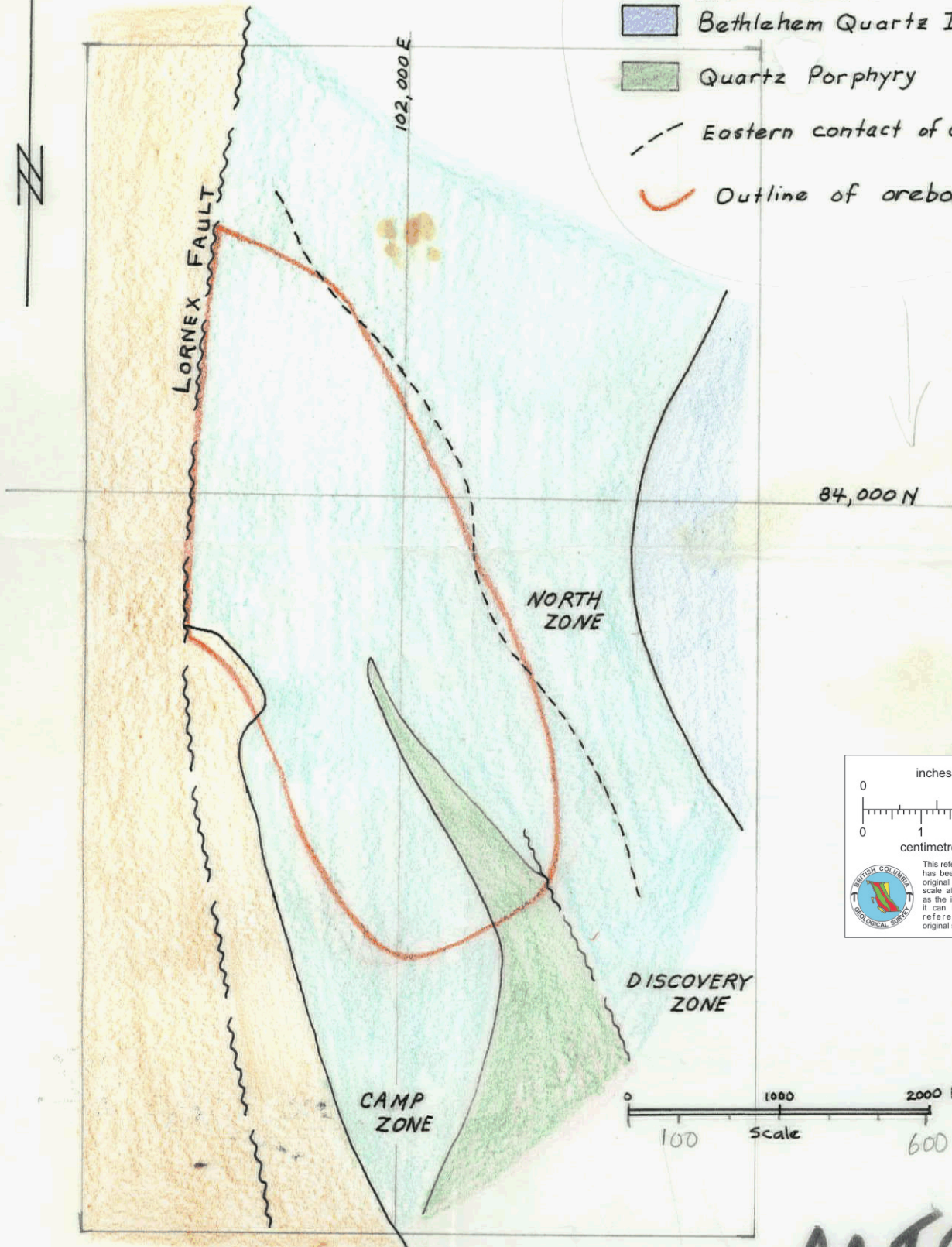


FIG. 21
GEOLOGY OF LORNE



- Bethsaida Quartz Monzonite
- Bethsaida - Bethlehem Transitional Contact Phase (often called Skeena Quartz Diorite)
- Bethlehem Quartz Diorite
- Quartz Porphyry
- Eastern contact of alteration zone
- Outline of orebody



Generalized geology of the Lorne property

92 ISW
45

010919