

(7)

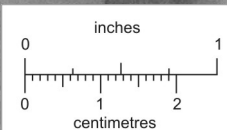
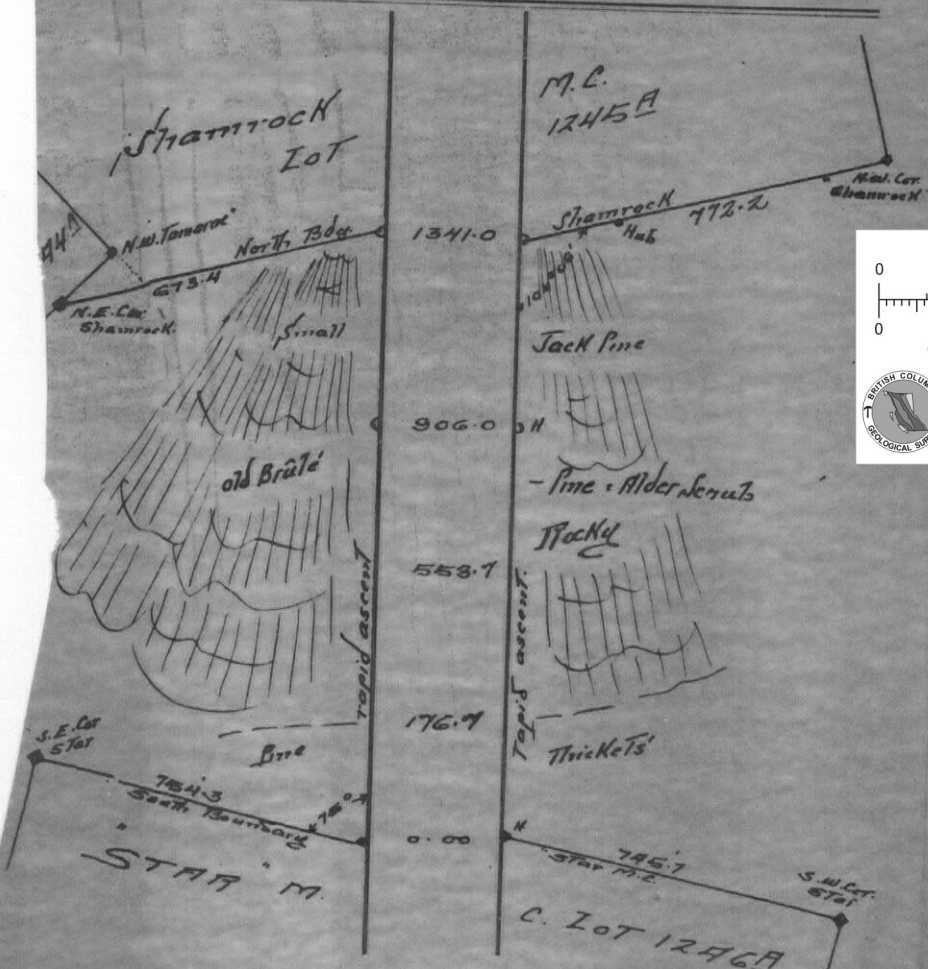
"STAR" Mineral Claim.

Lot No. 1246A

District.

Connection with "Shamrock" M.C. L. 1245. Boundary.

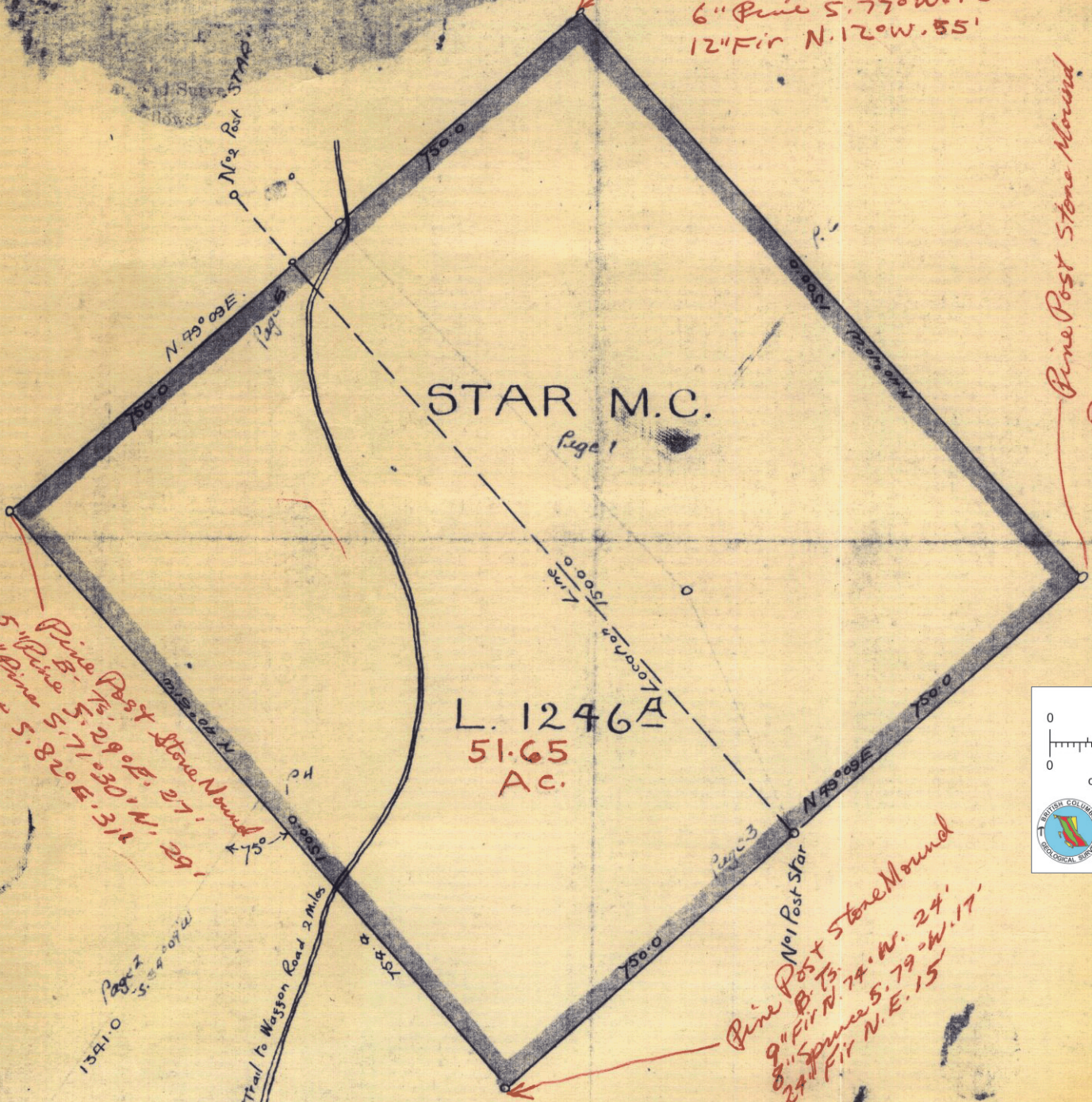
Bearing South 34.09 West



This reference scale bar has been added to the original image. It will scale at the same rate as the image, therefore it can be used as a reference for the original size.

010895

The above line was run the 27<sup>th</sup> day of August, 1907  
 J.L. Swannell B.L.S.



Pine Post Stone Mound  
B. Ts.  
4" Pine N. 64° E. 28'  
6" Pine S. 77° W. 12'  
12" Fir N. 12° W. 55'

Pine Post Stone Mound  
B. Ts.  
5" Pine S. 35° E. 4'  
7" Pine N. 63° W. 20'  
6" Pine S. 88° W. 70'

Pine Post Stone Mound  
5" Pine S. 71° E. 27'  
11" Pine S. 71° 30' N. 29'  
5" Pine S. 82° E. 31'

No 1 Post Star  
Pine Post Stone Mound  
9" Fir N. 74° W. 24'  
8" Spruce S. 79° W. 17'  
24" Fir N. E. 15'

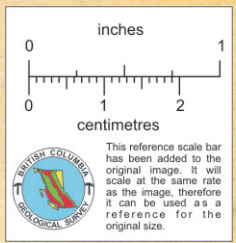
STAR M.C.

L. 1246A  
51.65  
AC.

13410

Trail to Wagon Road 2 Miles

Scale 300' = 1 inch



92ISW042