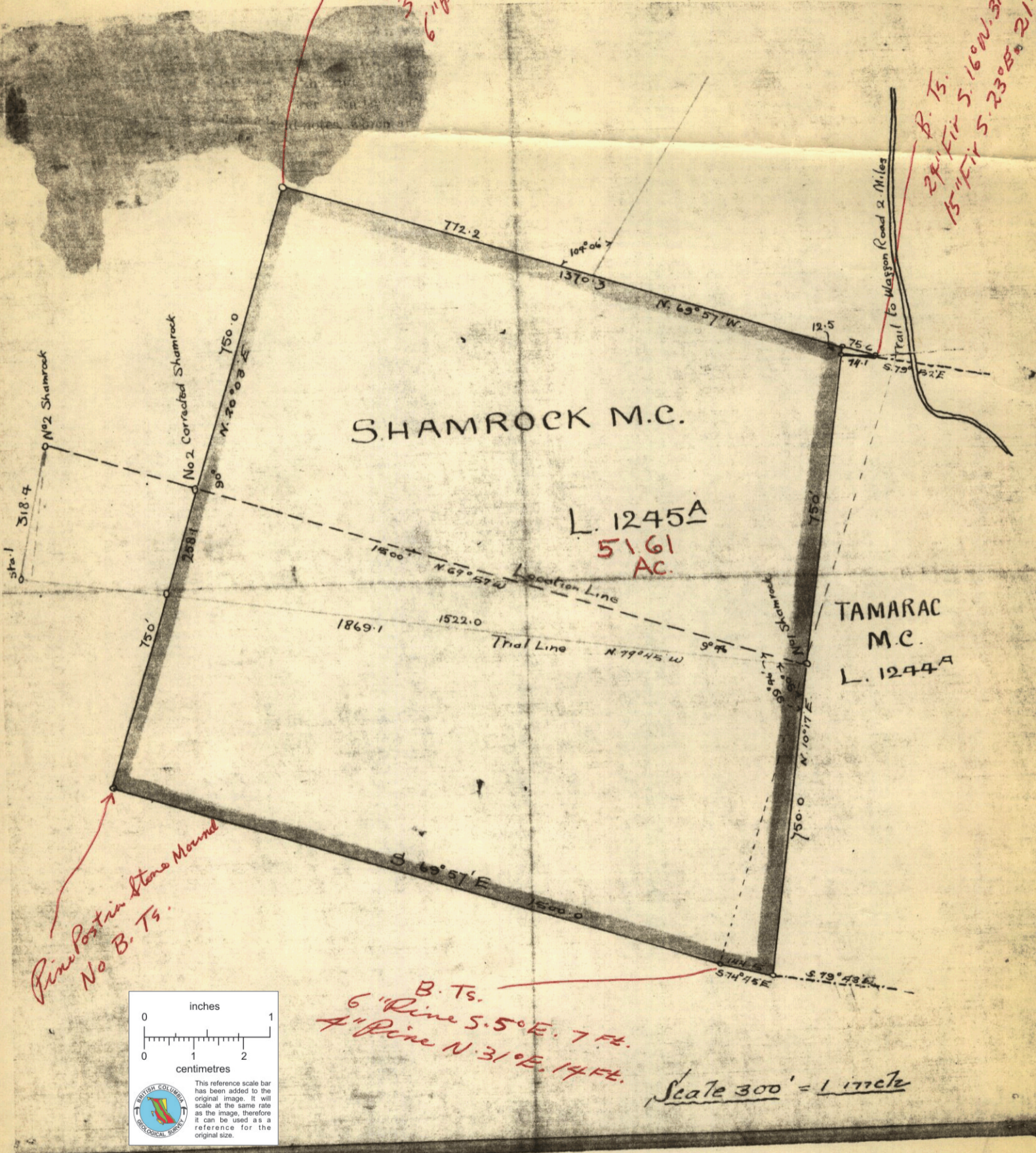
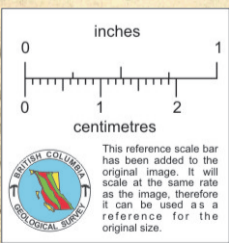


Pine Post in Stone Mound
 B. Ts.
 13" Fir N. 28° E. 8'
 3" Pine S. 41° W. 21'
 6" Pine S. 47° E. 14'

*B. Ts.
 24" Fir S. 16° W. 31 FT.
 15" Fir S. 23° E. 21 FT.*



*Pine Post in Stone Mound
 No B. Ts.*



*B. Ts.
 6" Pine S. 5° E. 7 FT.
 4" Pine N. 31° E. 14 FT.*

92ISW042

010894