

Property
File

W.A. No.

092ISW039

NAME ACACIA MINERAL DEV.

SUBJECT REPORT

A, B, C claims

* (See also 092ISW039)

This Report may
not have been
reviewed for the
writing of 9/02/19
revision. No mention
in bib.

PROPERTY FILE

092ISW039

010890

92ISW039-07

PROPERTY FILE

921 / SW-07
ME/DS

ACACIA MINERAL DEVELOPMENT
CORPORATION LIMITED (N.P.L.)
KAMLOOPS MINING DIVISION
BRITISH COLUMBIA

REPORT

BY

D.C. MALCOLM, P. Eng.,
Consulting Geologist

Vancouver, B.C.
July 14, 1976

DEPT. OF MINES AND PETROLEUM RESOURCES		
Rec'd NOV 3 1976		
KSB		
MI		

C O N T E N T S

	Page
SUMMARY.	1
LOCATION	1
CLAIMS	2
GENERAL GEOLOGY.	2
CLAIM GEOLOGY.	3
DEPOSITS	4
CONCLUSIONS.	5
RECOMMENDATIONS.	5
ESTIMATED COSTS.	6
CERTIFICATION	

MAPS

ACACIA MINERAL DEVELOPMENT
CORPORATION LIMITED (N.P.L.)
KAMLOOPS MINING DIVISION
BRITISH COLUMBIA

SUMMARY

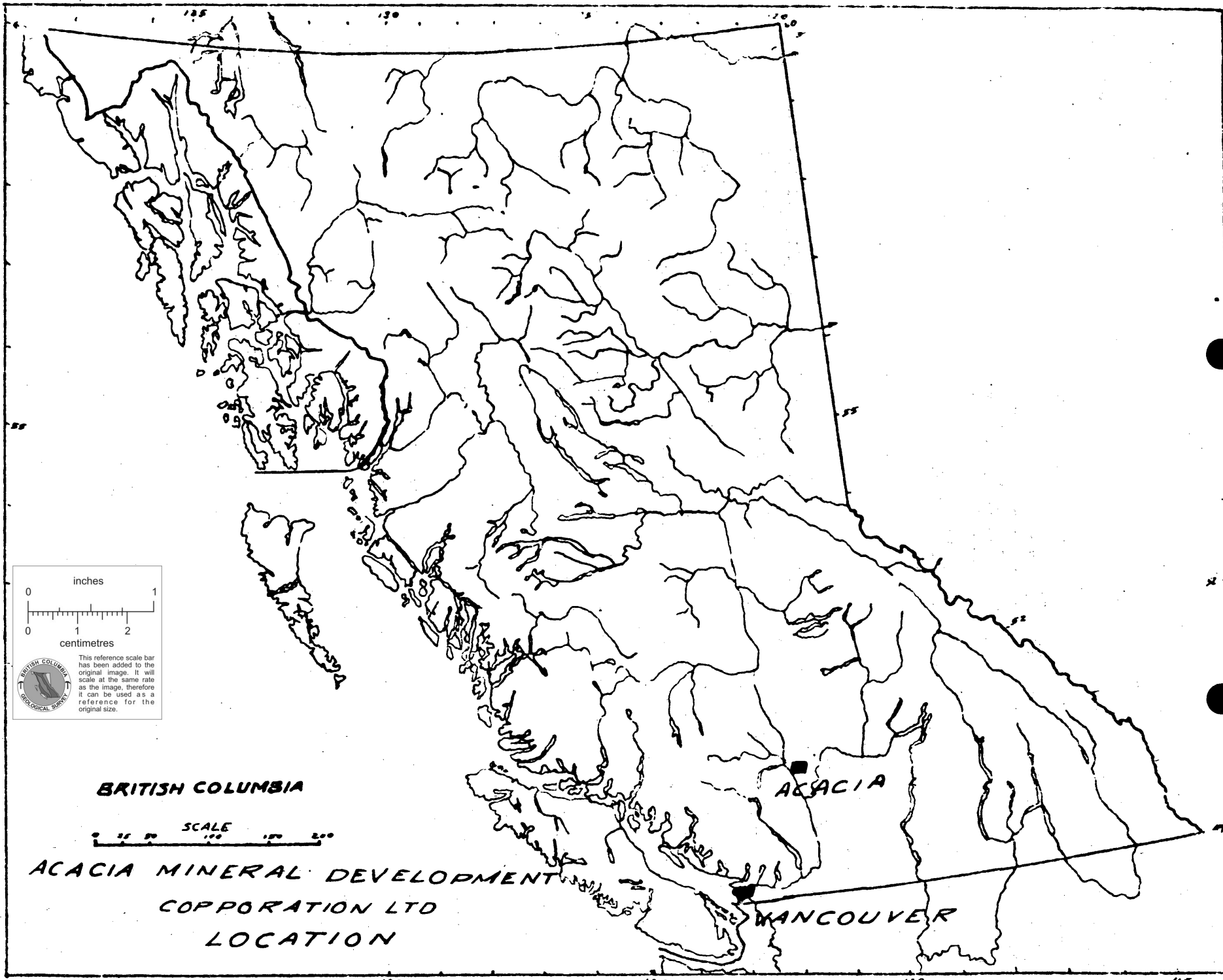
The Acacia Mineral Development Corporation claims cover areas of disseminated chalcopyrite and magnetite in brecciated sediments and volcanics intruded by feldspar porphyry dikes near the contact of a diorite intrusive.

I recommend drilling and extensive sampling to determine if the deposit is suitable for open pit mining.

LOCATION


Latitude: 50°30' North
Longitude: 121°34' West
Elevation: 1,500 to 5,000 Feet

The claims are south of McGillivray Creek, east of the Fraser River, 20 miles north of Lytton.

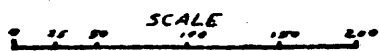


inches
0 1

centimetres
0 1 2

 This reference scale bar has been added to the original image. It will scale at the same rate as the image, therefore it can be used as a reference for the original size.

BRITISH COLUMBIA



**ACACIA MINERAL DEVELOPMENT
CORPORATION LTD
LOCATION**

ACACIA

VANCOUVER

CLAIMS

Forty-two located claims:

A Numbers 1 to 16, inclusive; Record Numbers 81,352 to 81,367, inclusive with assessment due on June 30, 1976.

B Numbers 1 to 16, inclusive; Record Numbers 81,368 to 81,383, inclusive, with assessment due on June 30, 1976.

C Numbers 1 to 4, inclusive; Record Numbers 69,921 to 69,924, inclusive, with assessment due on July 6, 1976.

C Numbers 5 & 6; Record Numbers 91,653 & 91,654, with assessment due on September 21, 1976.

O Numbers 1 to 4, inclusive; Record Numbers 87,575 to 87,578, inclusive, with assessment due on February 5, 1977.

Kamloops Mining Division, British Columbia

GENERAL GEOLOGY

The area is on the east side of the Fraser River in a fault block or graben that lies east and parallel with the Coast Range Mountains.

The block is underlain by Permian, Triassic, Jurassic and Cretaceous sediments and volcanics and intruded by Jurassic, Cretaceous and Tertiary crystalline rocks. It is bounded by major faults along the Fraser River valley and by faults which extend from the British Columbia-Washington State boundary through Princeton, Merritt, to the Chilcotin.

The fault block is intensely faulted and altered over large areas which often contain large copper mines and prospects.

CLAIM GEOLOGY

The rocks on the claims are extensively brecciated sediments and volcanics (andesite, cherty tuffs, limestone and limestone breccias). They are intruded near the mouth of McGillivray Creek by diorites of the Mount Lytton batholith and to the east at the headwaters of the Creek by quartz diorite.

Feldspar porphyry dikes intrude brecciated andesites and limestone breccias. The dikes and adjacent intruded rocks contain disseminated chalcocopyrite, magnetite and bornite. Andesites, further from the dikes, contain massive and disseminated pyrite. Large areas of these pyritized rocks form limonite surface gossans.

DEPOSITS

The main deposits occur at the summit of a ridge and along its flanks between elevations 4,500 and 5,000 feet. On the north side of the ridge a number of small hand trenches expose sheared and brecciated feldspar porphyry and altered limy volcanics. Five samples over an area 200 feet by 200 feet, averaged 0.42% copper.

A road has been built from McGillivray Creek to the lower part of the deposit on the north slope of the ridge. Trenches have been roughed out partly across the deposit at elevations 4,650 and 4,800 feet.

On the south side of the ridge, 1,500 feet south of these trenches, chalcopyrite occurs with magnetite in old trenches and malachite stained feldspar porphyry forms a slide in a dry gulch. One picked sample assayed 0.37 oz. silver, per ton and 7.16% copper.

On the road, at elevation 3,300 feet, a porphyry dike was exposed. Chalcopyrite bearing limestone breccia float occurs near it.

Pyritic deposits occur over a large area east of the porphyry dikes and extend across the claims. Two outcrops have been sampled and assayed 0.095% and 0.15% copper.

A spring, at elevation 3,600 feet near McGillivray Creek, deposits a white precipitate which showed 1.19% silicon and 84.75% alumina.

In 1973, 1974 and 1975 a number of small trenches were made and the road was extended to the hill top.

CONCLUSIONS

The Acacia claims cover an interesting copper deposit at least 200 feet wide and it could extend for 1,500 feet along a southeast strike.

RECOMMENDATIONS

Bulldozer trenching should be done to further cross section the deposit and to prepare drill sites.

When this work is completed the deposit should be drilled.

ESTIMATED COSTS

Stage 1 - Bulldozing

Site Preparation	\$ 8,000.00
Supervision	1,200.00
Geology	500.00
Transportation	<u>300.00</u>
TOTAL	<u>\$10,000.00</u>

Work Completed June 29 1976
Stage 1.

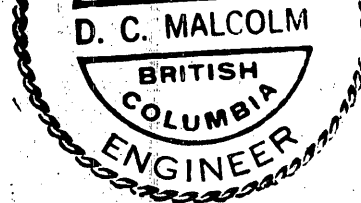
F.W. Bull
 Pres.

Stage 2 - Drilling

Drilling: 3,000 Feet @ \$15/Ft.	\$45,000.00
Sampling & Assaying	5,000.00
Transportation & Mobilization	3,000.00
Geology & Supervision	5,000.00
Contingencies	<u>7,000.00</u>
TOTAL	<u>\$65,000.00</u>

Report by

D. C. Malcolm
D. C. MALCOLM, ENG.,
Consulting Geologist

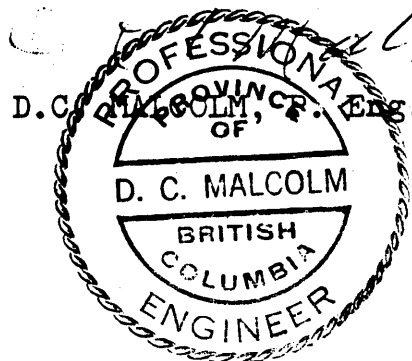


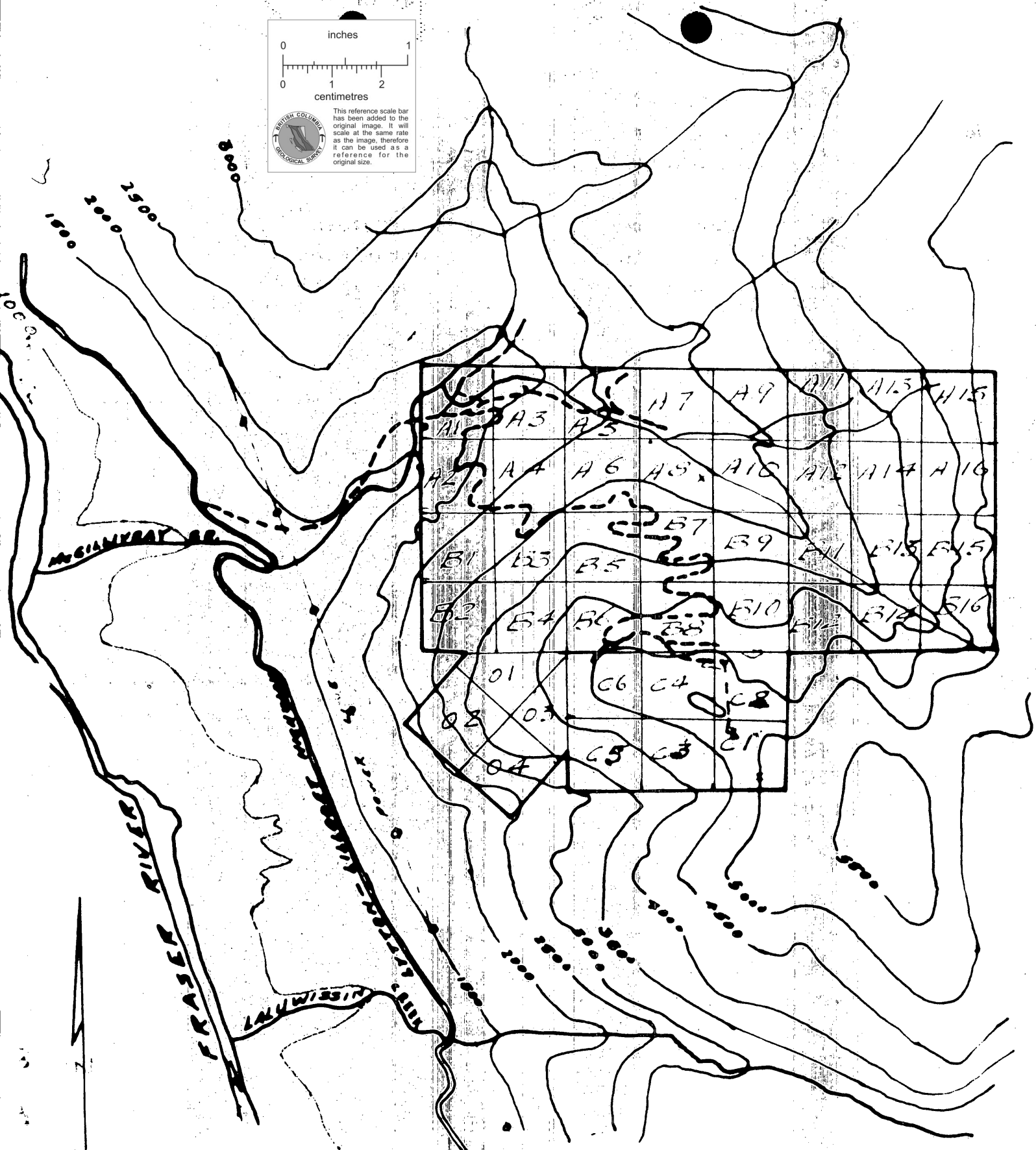
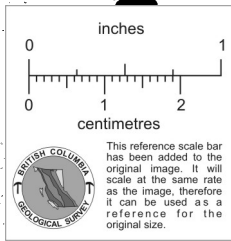
Vancouver, B.C.
July 14, 1976

C E R T I F I C A T E

This is to certify:

1. I, DOUGLAS COLE MALCOLM am a resident of Vancouver, B.C., and live at 2290 West 23rd Avenue.
2. I am a graduate of the University of British Columbia, with the degree of Bachelor of Applied Science in Geological Engineering (1935).
3. I am a member of the Association of Professional Engineers of British Columbia and Ontario and have practised my profession continuously since graduation.
4. I have not, directly or indirectly, received or expect to receive any interest, direct or indirect, in the property of ACACIA MINERAL DEVELOPMENT CORPORATION LIMITED (N.P.L.), or of any affiliate; or beneficially own, directly or indirectly, any securities of the company or of any affiliate.
5. This report is based on personal examinations made in 1971 and on July 23, 1972 in the company of Mr. FRANK BULL. The principal posts were examined and the claims appear to be well staked. A visit to McGillivray Creek was made on April 29, 1976.





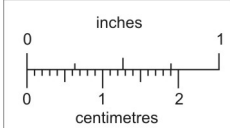
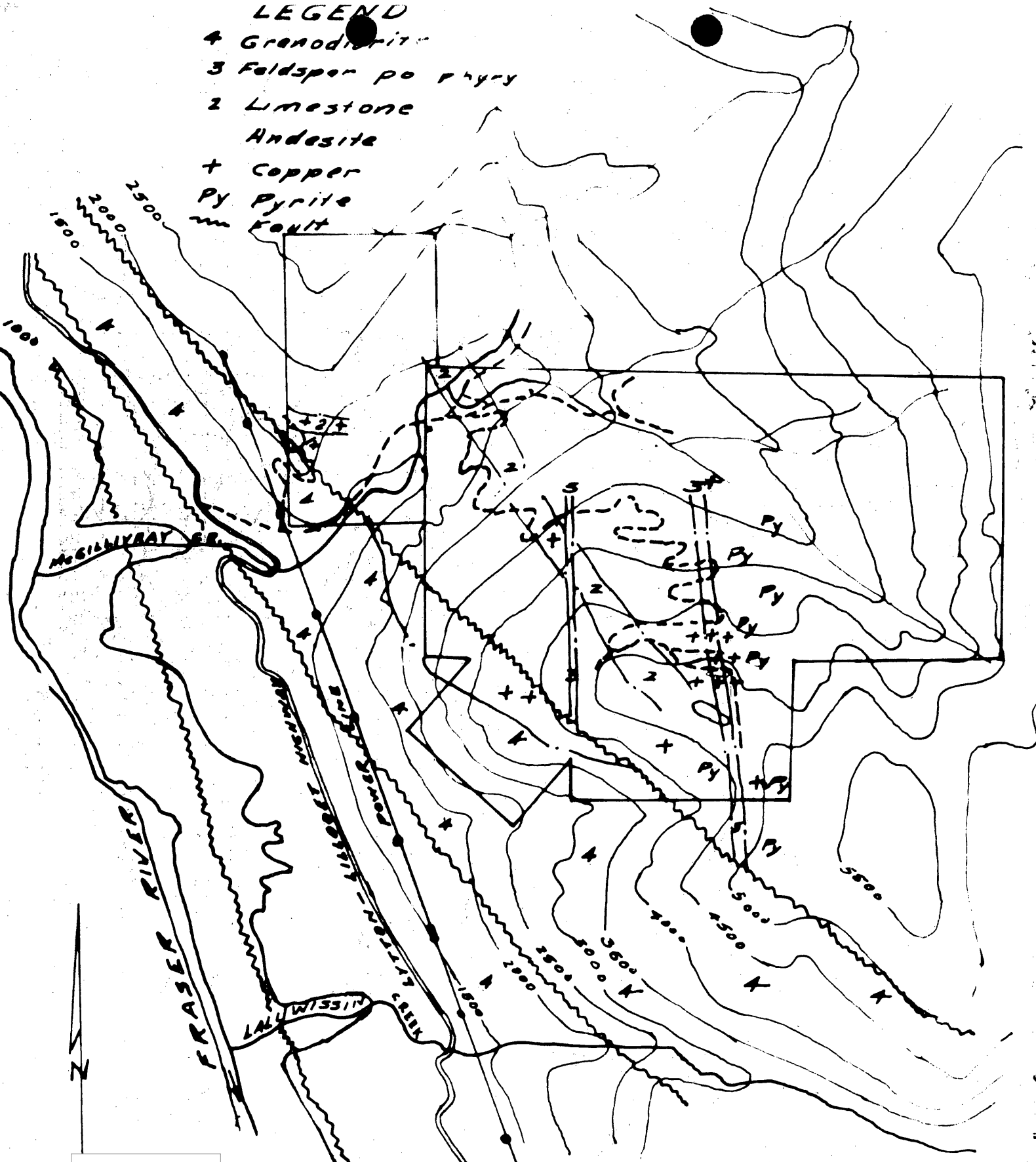
AGCIDA MINERAL DEVELOPMENT CORPORATION LTD

CLAIMS

SCALE 1" = 1/2 MILE

DATE 27, 7, 72

- LEGEND**
- 4 Grenodiorite
 - 3 Feldspar porphyry
 - 2 Limestone
 - Andesite
 - + Copper
 - Py Pyrite
 - Fault

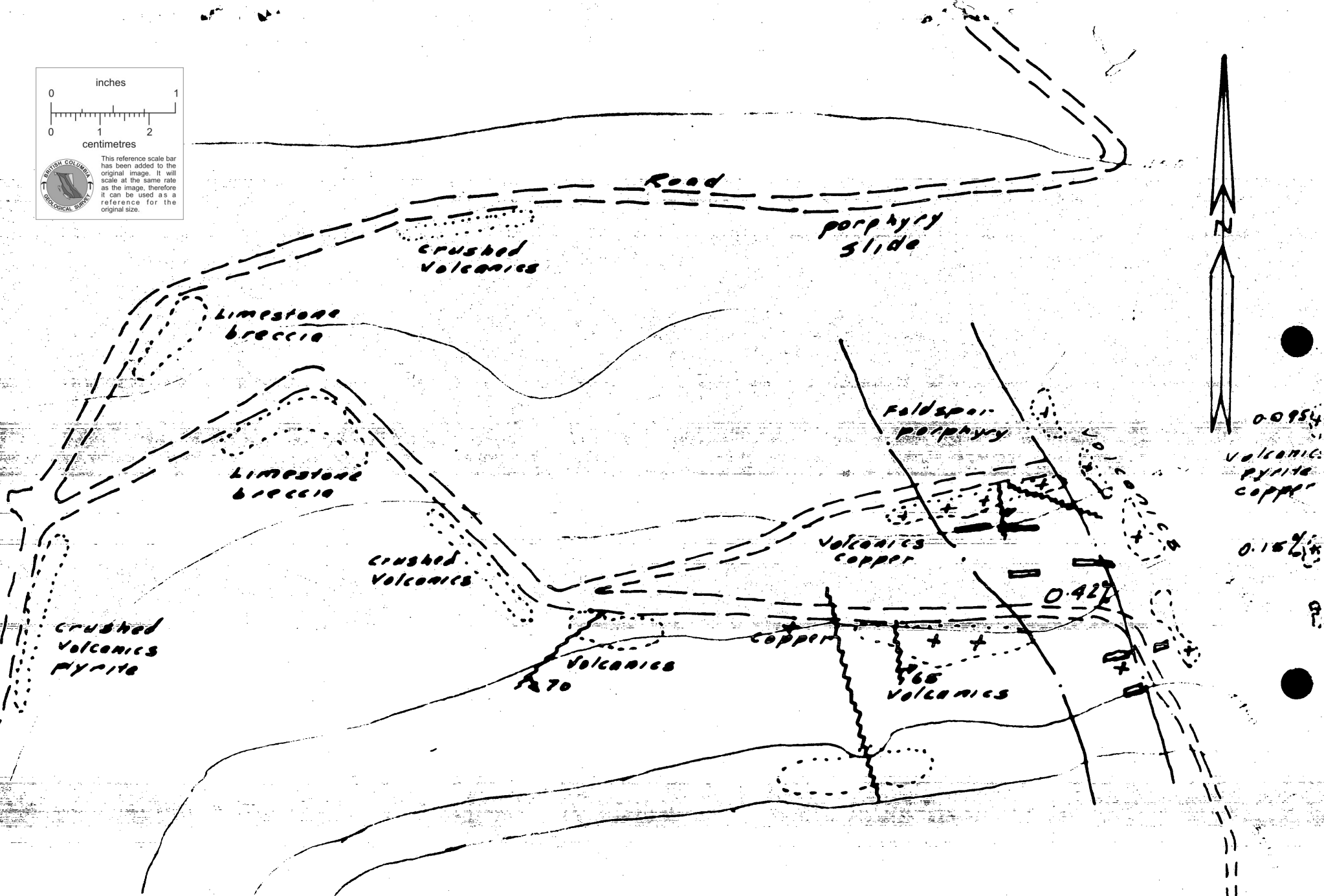
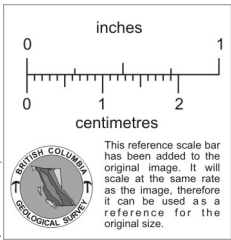


This reference scale bar has been added to the original image. It will scale at the same rate as the image, therefore it can be used as a reference for the original size.

ACACIA MINERAL DEVELOPMENT CORPORATION LTD

GEOLOGY

SCALE 1" = 1/4 MILE DATE 27, 7, 72.



ACACIA MINERAL DEVELOPMENT CORPORATION LTD.

TRENCHING

SCALE 1" = 100'

DATE 27,7,72.