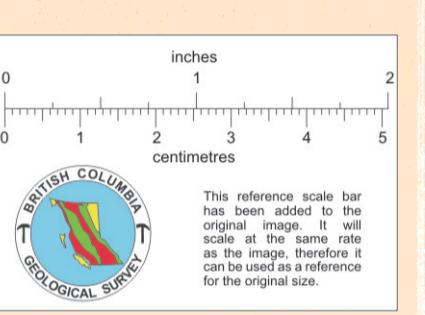
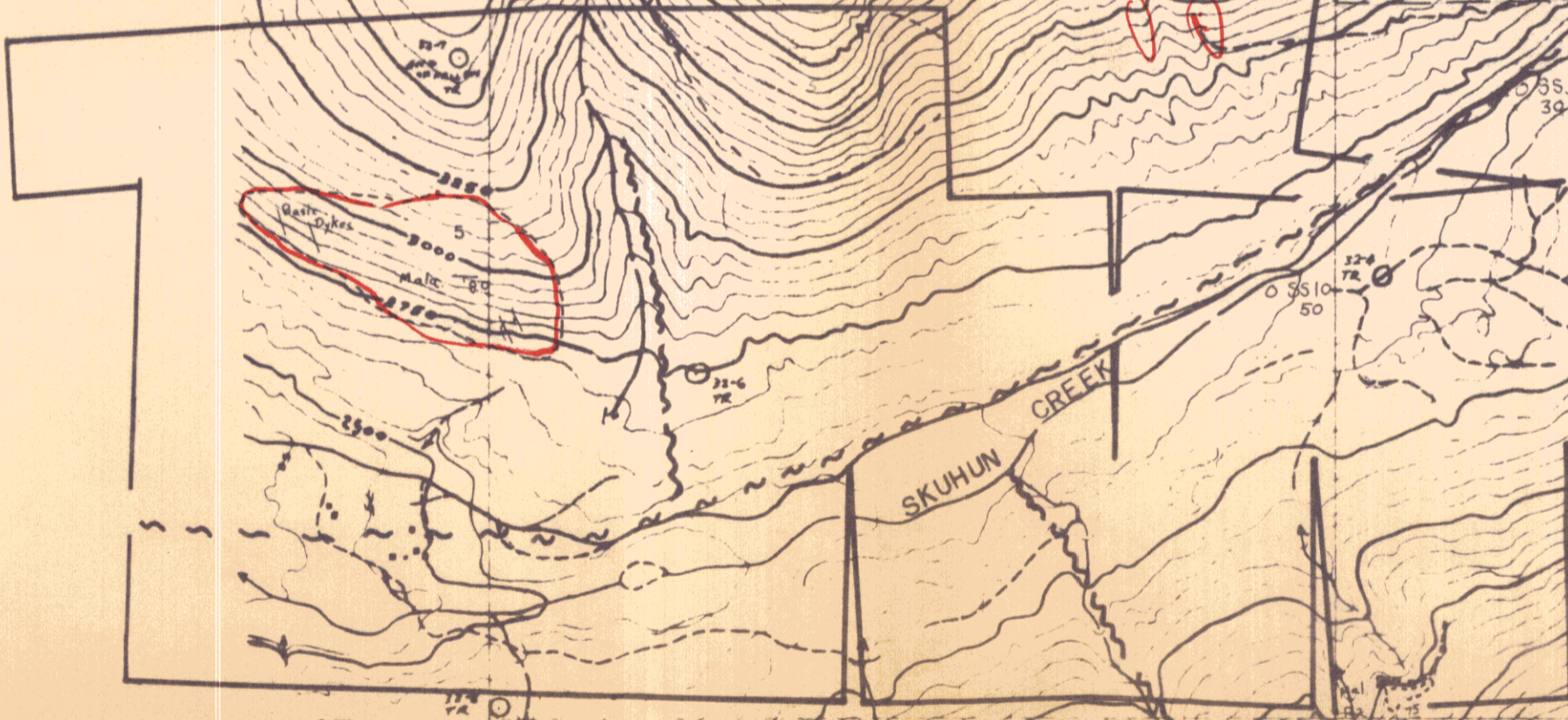


7200MS 12b

92I/6a

NES PROPERTY  
 GEOLOGY  
 N.T.S. 92 I 6a  
 Scale: 1" = 1000'  
 Date: Oct. 17, 1969  
 010980

SKUJIN CREEK



**LEGEND**

- 5 Guichon Variety
- 4 Chataway Variety
- 3 Skeena Phase
- 2 Witches Brook Phase
- 1 Bethesda Phase

**SYMBOLS**

- o Geochemical Samples - assay in p.p.m.
- Shear Zone
- Fault
- Pink Potassic Alteration
- Mineralization
- Chloritization
- Epidote Stringers
- Geological Contact Inferred

