



COPPER

BETHLEHEM

INDIAN RESERVE No. 14

7000 Feet

Probable
Bedrock
exposure
Limit

Dozer trench to 5' deep in
large boulder till and clay.
Some boulders have dissem-
ed Cu
(chiefly along fractures) Basement
may be near surface.

Dozer trench to 9' deep
in till. Some Cu stain

Dozer trench
to 9'

Dozer trench
to 20' deep

Dozer trench to 15' deep in
till containing large G boulders

Occ scattered boulders -
chiefly Probably Till

Occasional boulders

Till 2

Dozer trench to 8' deep
in till B varved clay

Probable claim
location

Occasional boulders

Till 2

No outcrop

Occasional boulders

Till 2

No outcrop

Occasional boulders

Till 2

No outcrop

Occasional boulders

Till 2

No outcrop

Occasional boulders

Till 2

No outcrop

Occasional boulders

Till 2

No outcrop

Occasional boulders

Till 2

No outcrop

Occasional boulders

Till 2

No outcrop

Occasional boulders

Till 2

No outcrop

Occasional boulders

Till 2

40' x 80' x 15' plus deep hole
dug by bulldozer in scree
and till

Area of many large
boulders, almost entirely
Basement near surface

No outcrop
Occasional large
G boulders

A few G boulders

A few G boulders

A few G boulders

A few G boulders

A few G boulders

A few G boulders

A few G boulders

A few G boulders

A few G boulders

A few G boulders

A few G boulders

A few G boulders

A few G boulders

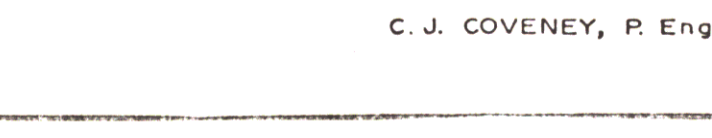
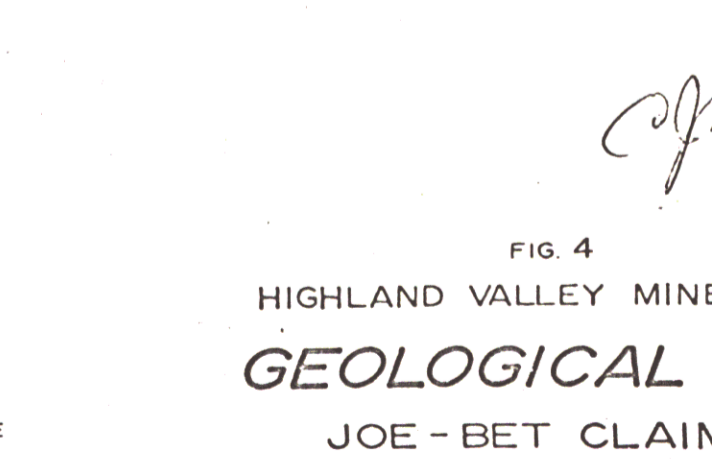
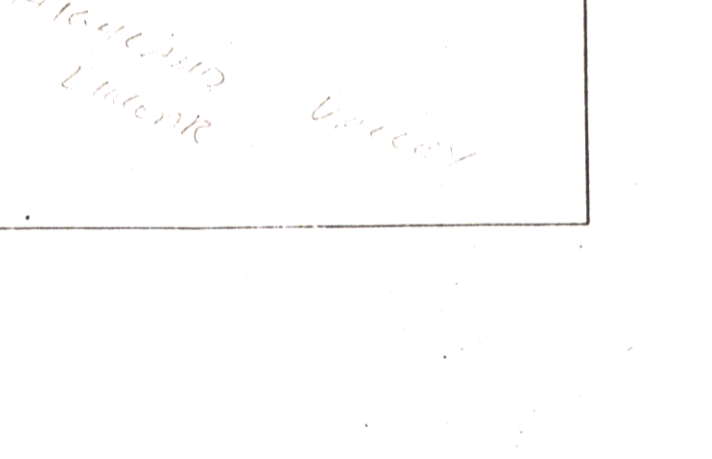
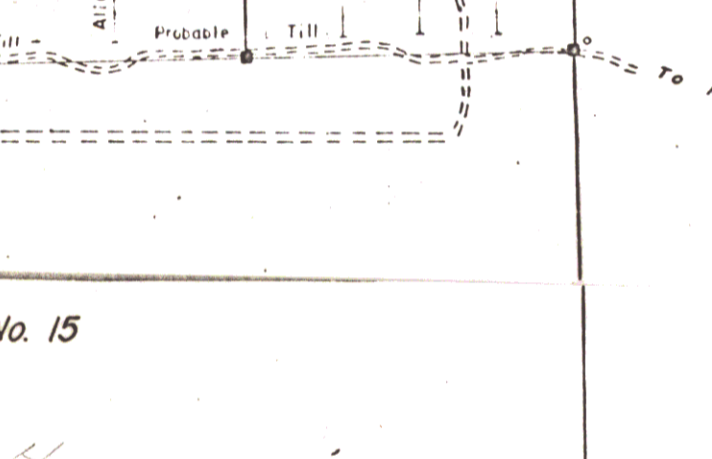
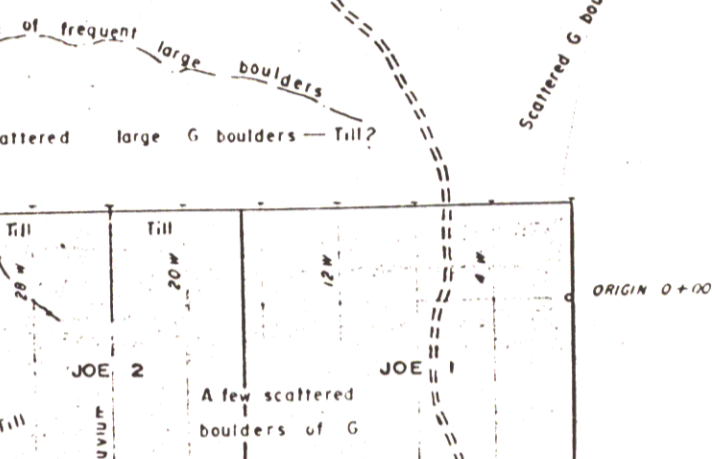
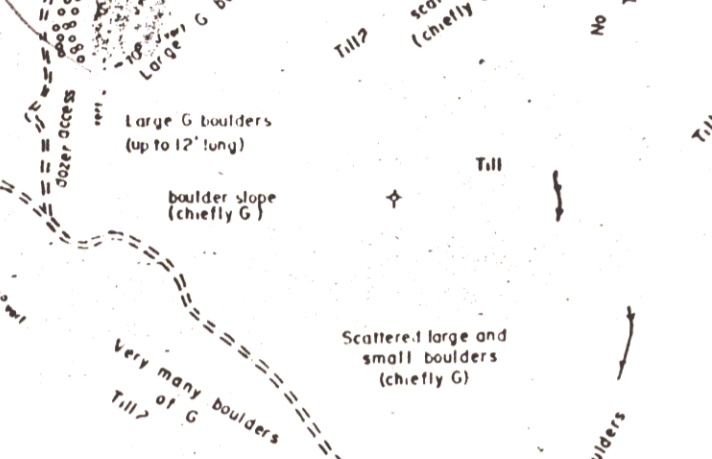
A few G boulders

A few G boulders

A few G boulders

A few G boulders

A few G boulders



LEGEND

All details are related to grid lines by compass and pace survey

- "Granite"-Guichon phase of Northcote's report?
- "Granite"-Chataway phase of Northcote's report?
- Joint
- Located claim posts of H.V.M. claim
- Other claim posts
- Survey marker (wood)
- Survey marker (aluminum)
- G boulders
- Main Ashcroft - Merritt road
- Dirt (access) roads



Induced Polarization Anomaly (1969)



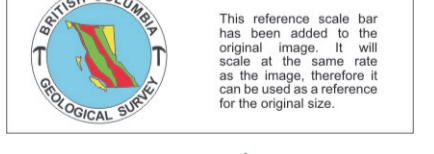
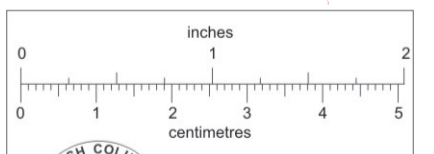
Drill Holes (Dec. 1970)



Drill Holes (Jan. 1971)

NOTES:

1. G = "Granite" - contains pink & grey feldspar, hornblende, green biotite, and some quartz (= adamellite)
2. Gf = G but with crystal size slightly smaller & possibly a slightly higher %age of Fe-Mg minerals. Orthoclase not as pink as in G.
3. The composition of the till is fairly uniform over whole area, namely about 97% "Granite", 2% basalt and/or desite, 1% porphyry (and pegmatite?)



NOTE: COMPILED FROM FIELD NOTES BY F. LEE

To accompany Geological Report by C. Coveney P. Eng., and F. Lee, Geologist on the BET & JOE Group of Claims dated September 22, 1969

FIG. 4
HIGHLAND VALLEY MINES LTD.
GEOLOGICAL MAP
JOE - BET CLAIMS
HIGHLAND VALLEY AREA, B.C.

SCALE
Feet 1000 0 1000 Feet
C. J. COVENEY, P. Eng.

010755