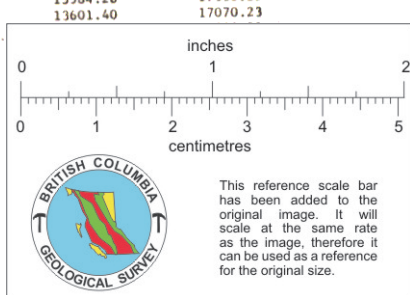
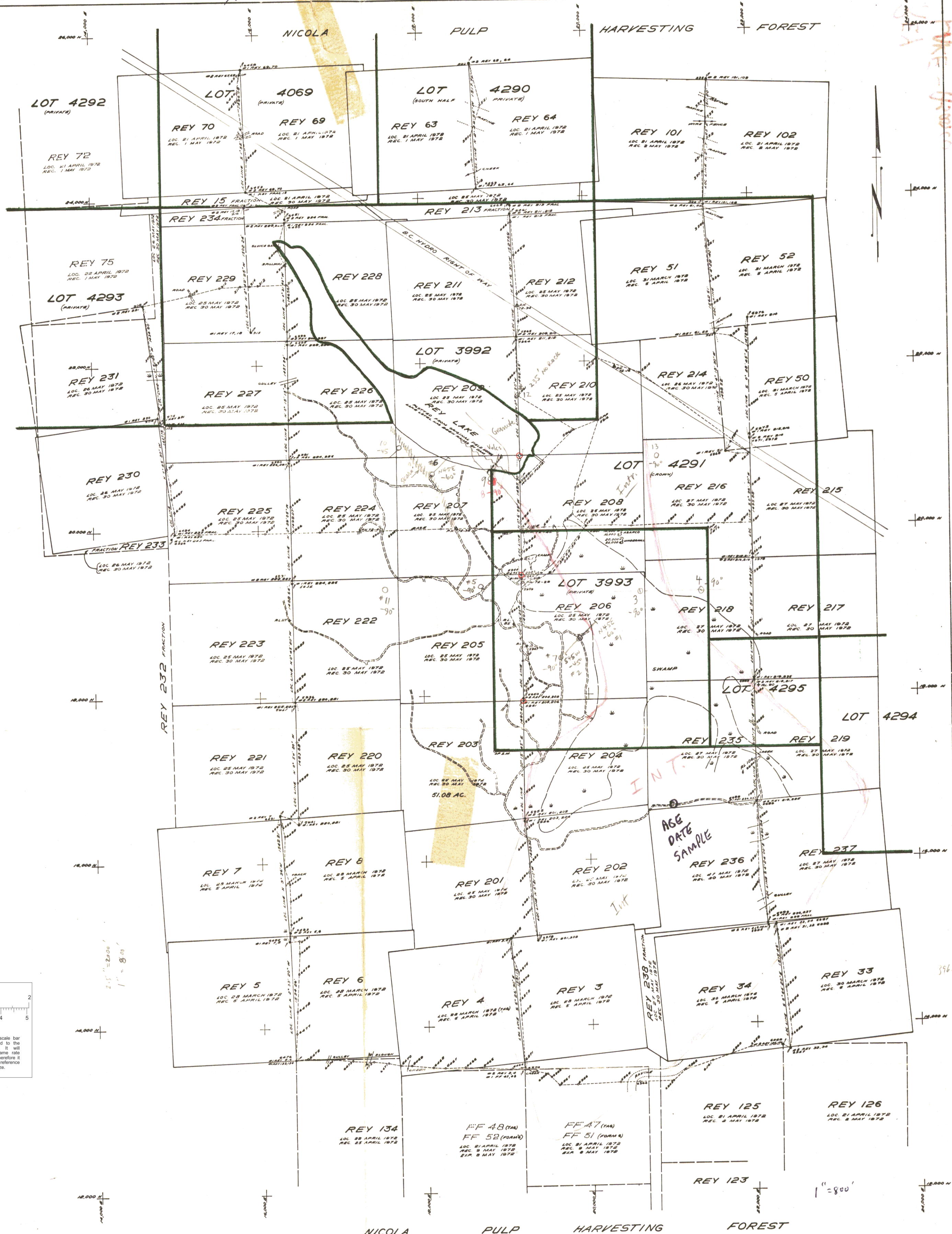


| Station | Latitude | Departure |
|---------|----------|-----------|
| 5901 | 20000.00 | 20000.00 |
| 5902 | 20111.11 | 19811.61 |
| 5903 | 20471.42 | 19876.99 |
| 5904 | 20005.26 | 20302.30 |
| 5905 | 19811.11 | 20546.60 |
| 5906 | 20011.78 | 20989.97 |
| 5907 | 20001.30 | 21211.77 |
| 5908 | 20009.25 | 21272.14 |
| 5909 | 20007.59 | 21672.57 |
| 5910 | 20007.73 | 21672.57 |
| 5911 | 20011.21 | 22005.60 |
| 5912 | 20459.37 | 22002.83 |
| 5913 | 20856.78 | 22000.45 |
| 5914 | 21857.66 | 20667.86 |
| 5915 | 22039.95 | 20164.21 |
| 5916 | 22380.00 | 17695.27 |
| 5917 | 19996.25 | 19490.53 |
| 5918 | 19973.99 | 19225.01 |
| 5919 | 19959.83 | 19029.34 |
| 5920 | 19991.69 | 18679.41 |
| 5921 | 19988.84 | 18277.82 |
| 5922 | 19973.17 | 17695.27 |
| 5923 | 19983.97 | 17522.63 |
| 5924 | 19980.17 | 16971.67 |
| 5925 | 19978.78 | 16768.11 |
| 5926 | 19976.24 | 16403.17 |
| 5927 | 19974.05 | 16085.47 |
| 5928 | 19969.41 | 15612.70 |
| 5929 | 19965.24 | 15283.93 |
| 5930 | 19961.18 | 14899.63 |
| 5931 | 19957.12 | 14469.10 |
| 5932 | 19953.06 | 14000.00 |
| 5933 | 18961.24 | 14000.00 |
| 5934 | 18961.18 | 14000.00 |
| 5935 | 18066.01 | 14245.18 |
| 5936 | 17903.22 | 14245.18 |
| 5937 | 17903.22 | 14245.18 |
| 5938 | 17458.86 | 14437.75 |
| 5939 | 16966.00 | 14437.75 |
| 5940 | 16556.59 | 14449.68 |
| 5941 | 16463.15 | 14451.21 |
| 5942 | 15915.17 | 14245.18 |
| 5943 | 15489.66 | 14245.18 |
| 5944 | 15423.26 | 14245.18 |
| 5945 | 15423.26 | 14245.18 |
| 5946 | 14973.17 | 14245.18 |
| 5947 | 14549.15 | 14245.18 |
| 5948 | 14123.08 | 14245.18 |
| 5949 | 13696.31 | 14245.18 |
| 5950 | 13269.58 | 14245.18 |
| 5951 | 12842.85 | 14245.18 |
| 5952 | 12416.12 | 14245.18 |
| 5953 | 11989.39 | 14245.18 |
| 5954 | 11562.66 | 14245.18 |
| 5955 | 11135.93 | 14245.18 |
| 5956 | 10709.20 | 14245.18 |
| 5957 | 10282.47 | 14245.18 |
| 5958 | 9855.74 | 14245.18 |
| 5959 | 9429.01 | 14245.18 |
| 5960 | 9002.28 | 14245.18 |
| 5961 | 8575.55 | 14245.18 |
| 5962 | 8148.82 | 14245.18 |
| 5963 | 7722.09 | 14245.18 |
| 5964 | 7295.36 | 14245.18 |
| 5965 | 6868.63 | 14245.18 |
| 5966 | 6441.90 | 14245.18 |
| 5967 | 6015.17 | 14245.18 |
| 5968 | 5588.44 | 14245.18 |
| 5969 | 5161.71 | 14245.18 |
| 5970 | 4734.98 | 14245.18 |
| 5971 | 4308.25 | 14245.18 |
| 5972 | 3881.52 | 14245.18 |
| 5973 | 3454.79 | 14245.18 |
| 5974 | 3028.06 | 14245.18 |
| 5975 | 2601.33 | 14245.18 |
| 5976 | 2174.60 | 14245.18 |
| 5977 | 1747.87 | 14245.18 |
| 5978 | 1321.14 | 14245.18 |
| 5979 | 894.41 | 14245.18 |
| 5980 | 467.68 | 14245.18 |
| 5981 | 17.95 | 14245.18 |
| 5982 | 17.95 | 14245.18 |
| 5983 | 17.95 | 14245.18 |
| 5984 | 17.95 | 14245.18 |
| 5985 | 17.95 | 14245.18 |
| 5986 | 17.95 | 14245.18 |
| 5987 | 17.95 | 14245.18 |
| 5988 | 17.95 | 14245.18 |
| 5989 | 17.95 | 14245.18 |
| 5990 | 17.95 | 14245.18 |
| 5991 | 17.95 | 14245.18 |
| 5992 | 17.95 | 14245.18 |
| 5993 | 17.95 | 14245.18 |
| 5994 | 17.95 | 14245.18 |
| 5995 | 17.95 | 14245.18 |
| 5996 | 17.95 | 14245.18 |
| 5997 | 17.95 | 14245.18 |
| 5998 | 17.95 | 14245.18 |
| 5999 | 17.95 | 14245.18 |
| 6000 | 17.95 | 14245.18 |
| 6001 | 17.95 | 14245.18 |
| 6002 | 17.95 | 14245.18 |
| 6003 | 17.95 | 14245.18 |
| 6004 | 17.95 | 14245.18 |
| 6005 | 17.95 | 14245.18 |
| 6006 | 17.95 | 14245.18 |
| 6007 | 17.95 | 14245.18 |
| 6008 | 17.95 | 14245.18 |
| 6009 | 17.95 | 14245.18 |
| 6010 | 17.95 | 14245.18 |
| 6011 | 17.95 | 14245.18 |
| 6012 | 17.95 | 14245.18 |
| 6013 | 17.95 | 14245.18 |
| 6014 | 17.95 | 14245.18 |
| 6015 | 17.95 | 14245.18 |
| 6016 | 17.95 | 14245.18 |
| 6017 | 17.95 | 14245.18 |
| 6018 | 17.95 | 14245.18 |
| 6019 | 17.95 | 14245.18 |
| 6020 | 17.95 | 14245.18 |
| 6021 | 17.95 | 14245.18 |
| 6022 | 17.95 | 14245.18 |
| 6023 | 17.95 | 14245.18 |
| 6024 | 17.95 | 14245.18 |
| 6025 | 17.95 | 14245.18 |
| 6026 | 17.95 | 14245.18 |
| 6027 | 17.95 | 14245.18 |
| 6028 | 17.95 | 14245.18 |
| 6029 | 17.95 | 14245.18 |
| 6030 | 17.95 | 14245.18 |
| 6031 | 17.95 | 14245.18 |
| 6032 | 17.95 | 14245.18 |
| 6033 | 17.95 | 14245.18 |
| 6034 | 17.95 | 14245.18 |
| 6035 | 17.95 | 14245.18 |
| 6036 | 17.95 | 14245.18 |
| 6037 | 17.95 | 14245.18 |
| 6038 | 17.95 | 14245.18 |
| 6039 | 17.95 | 14245.18 |
| 6040 | 17.95 | 14245.18 |
| 6041 | 17.95 | 14245.18 |
| 6042 | 17.95 | 14245.18 |
| 6043 | 17.95 | 14245.18 |
| 6044 | 17.95 | 14245.18 |
| 6045 | 17.95 | 14245.18 |
| 6046 | 17.95 | 14245.18 |
| 6047 | 17.95 | 14245.18 |
| 6048 | 17.95 | 14245.18 |
| 6049 | 17.95 | 14245.18 |
| 6050 | 17.95 | 14245.18 |
| 6051 | 17.95 | 14245.18 |
| 6052 | 17.95 | 14245.18 |
| 6053 | 17.95 | 14245.18 |
| 6054 | 17.95 | 14245.18 |
| 6055 | 17.95 | 14245.18 |
| 6056 | 17.95 | 14245.18 |
| 6057 | 17.95 | 14245.18 |
| 6058 | 17.95 | 14245.18 |
| 6059 | 17.95 | 14245.18 |
| 6060 | 17.95 | 14245.18 |
| 6061 | 17.95 | 14245.18 |
| 6062 | 17.95 | 14245.18 |
| 6063 | 17.95 | 14245.18 |
| 6064 | 17.95 | 14245.18 |
| 6065 | 17.95 | 14245.18 |
| 6066 | 17.95 | 14245.18 |
| 6067 | 17.95 | 14245.18 |
| 6068 | 17.95 | 14245.18 |
| 6069 | 17.95 | 14245.18 |
| 6070 | 17.95 | 14245.18 |
| 6071 | 17.95 | 14245.18 |
| 6072 | 17.95 | 14245.18 |
| 6073 | 17.95 | 14245.18 |
| 6074 | 17.95 | 14245.18 |
| 6075 | 17.95 | 14245.18 |
| 6076 | 17.95 | 14245.18 |
| 6077 | 17.95 | 14245.18 |
| 6078 | 17.95 | 14245.18 |
| 6079 | 17.95 | 14245.18 |
| 6080 | 17.95 | 14245.18 |
| 6081 | 17.95 | 14245.18 |
| 6082 | 17.95 | 14245.18 |
| 6083 | 17.95 | 14245.18 |
| 6084 | 17.95 | 14245.18 |
| 6085 | 17.95 | 14245.18 |
| 6086 | 17.95 | 14245.18 |
| 6087 | 17.95 | 14245.18 |
| 6088 | 17.95 | 14245.18 |
| 6089 | 17.95 | 14245.18 |
| 6090 | 17.95 | 14245.18 |
| 6091 | 17.95 | 14245.18 |
| 6092 | 17.95 | 14245.18 |
| 6093 | 17.95 | 14245.18 |
| 6094 | 17.95 | 14245.18 |
| 6095 | 17.95 | 14245.18 |
| 6096 | 17.95 | 14245.18 |
| 6097 | 17.95 | 14245.18 |
| 6098 | 17.95 | 14245.18 |
| 6099 | 17.95 | 14245.18 |
| 6100 | 17.95 | 14245.18 |



| Station | Latitude | Departure |
|---------|----------|-----------|
| 6491 | 16576.45 | 16226.96 |
| 6492 | 16539.98 | 16348.59 |
| 6493 | 20285.06 | 18844.65 |
| 6494 | 19962.01 | 14986.10 |
| 6495 | 20234.12 | 14986.95 |
| 6496 | 19907.92 | 14986.95 |
| 6497 | 20398.95 | 14952.36 |
| 6498 | 20571.48 | 14938.75 |
| 6499 | 20746.48 | 14899.22 |
| 6500 | 21263.50 | 14873.09 |
| 6501 | 21327.33 | 14821.53 |
| 6502 | 20746.48 | 14793.35 |
| 6503 | 21503.54 | 14812.07 |
| 6504 | 22034.44 | 14788.01 |
| 6505 | 22398.62 | 14718.96 |
| 6506 | 22748.46 | 14625.45 |
| 6507 | 22862.72 | 15196.05 |
| 6508 | 22976.98 | 15265.42 |
| 6509 | 22964.42 | 15814.89 |
| 6510 | 22974.27 | 16376.00 |
| 6511 | 22983.83 | 16028.55 |
| 6512 | 22969.95 | 15935.52 |
| 6513 | 22413.60 | 15871.93 |
| 6514 | 23014.16 | 15876.36 |
| 6515 | 23939.58 | 18701.29 |
| 6516 | 24154.37 | 18657.30 |
| 6517 | 24546.30 | 18659.14 |
| 6518 | 24761.83 | 18772.22 |
| 6519 | 25126.56 | 18636.91 |
| 6520 | 25420.33 | 18700.00 |
| 6521 | 22289.60 | 21785.86 |
| 6522 | 22318.06 | 21554.51 |
| 6523 | 22962.52 | 21554.51 |
| 6524 | 22951.90 | 21539.09 |
| 6525 | 23371.21 | 21492.50 |
| 6526 | 23642.91 | 21461.35 |
| 6527 | 23871.81 | 21465.54 |
| 6528 | 24262.12 | 21464.57 |
| 6529 | 24464.03 | 21452.98 |
| 6530 | 24662.68 | 21482.97 |
| 6531 | 24924.45 | 21510.71 |
| 6532 | 25130.99 | 21507.41 |
| 6533 | 25381.80 | 21525.92 |

| Station | Latitude | Departure |
|-------------------|----------|-----------|
| FR 72-16 | 21936.70 | 20363.00 |
| FR 72-18 | 21844.57 | 19211.47 |
| FR 72-24 | 22691.91 | 19185.17 |
| FR 72-38 | 19990.14 | 18415.81 |
| FR 72-40 | 21510.71 | 17445.09 |
| FR 72-42 | 19938.00 | 19224.23 |
| RL 1 | 19619.69 | 19205.92 |
| RL 81 | 18581.37 | 19255.25 |
| RL 85 | 18840.20 | 19097.96 |
| RL 90 | 18072.58 | 22004.46 |
| RL 117 | 18922.99 | 16372.41 |
| N.E. L 3993 | 19558.79 | 21482.70 |
| S.W. L 3992 | 21282.84 | 14883.67 |
| L 4291 & Rey Lake | 20699.15 | 18842.81 |
| N.W. L 3993 | 19462.99 | 18843.58 |

LEGEND
 Bearings are astronomic and derived from
 Station observation through the Meridian of
 120° 42' 02" W Longitude
 On Concrete Monument (Legal survey) found above this
 (Top) Pulp
 Traverse Hub
 Stationed Drivable Pipe Post
 Stone Monument
 Bearing Tree
 All stations numbered with Metal Tags

NOTE:
 This plan is a location line survey only. The true
 position and shape of the Mineral Claims shown
 cannot be guaranteed for Official Purposes

AMERICAN SMELTING & REFINING COMPANY

**LOCATION LINE SURVEY
 OF REY MINERAL CLAIMS
 REY LAKE BRITISH COLUMBIA
 NICOLA MINING DIVISION**

SCALE: 1 INCH = 200 FEET DATE: NOV 10th 1972 DWS BY: D.V.
UNDERHILL & UNDERHILL
 PROFESSIONAL ENGINEERS & B.C. LAND SURVEYORS

010726
FIG. 9

1388-16