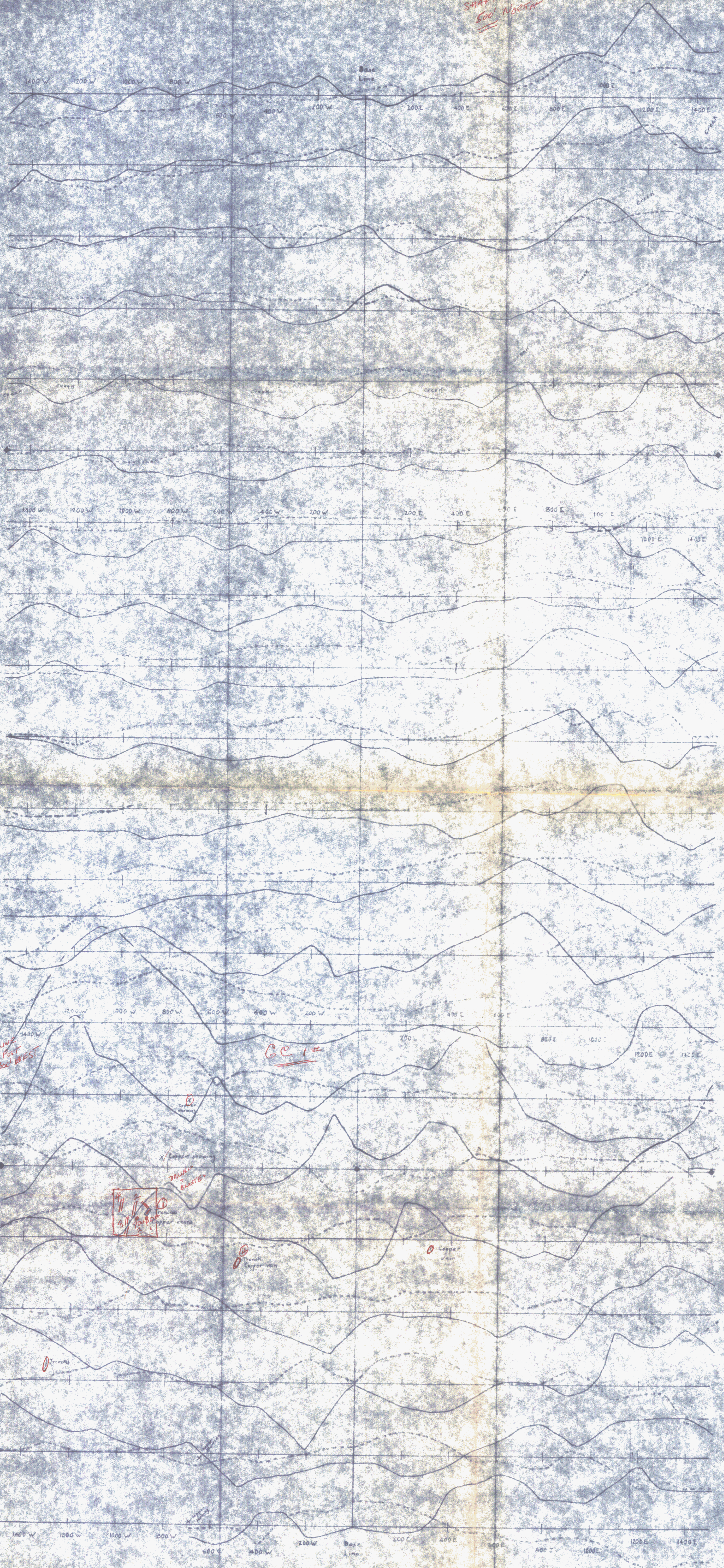


TOULIMA
SHAFT
500' NORTH



Line 6000 N
Line 5700 N
Line 5400 N
Line 5100 N
Line 4800 N
Line 4500 N
Line 4200 N
Line 3900 N
Line 3600 N
Line 3300 N
Line 3000 N
Line 2700 N
Line 2400 N
Line 2100 N
Line 1800 N
Line 1500 N
Line 1200 N
Line 900 N
Line 600 N
Line 300 N
Line 0



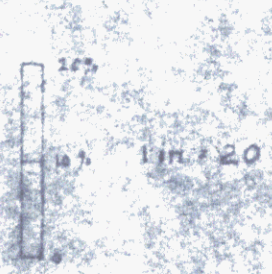
George Cressy, Jr. and
C.K.N. Exploration and
Development Co. Ltd (N.P.L.)

NIK
Claim Group
Merrill B.C.

Fig. 3
VLF-EM Profiles

Scale

1 in = 200 ft



Grid lines numbered in ft. N of Line 0.
Stations numbered in feet E and W
of the Base Line.
Claims NIK 65 to NIK 12.
* Claim posts.
Survey by Geonics VLF-EM instrument.

This preliminary geophysical report
by Sherwin F. Kelly, P.Eng.
geophysicist and geologist on the
NIK group of mineral claims,
Nicola Lake, Nicola Mining
Division, B.C., dated July 12, 1951.

Sherwin F. Kelly, P.Eng.

