

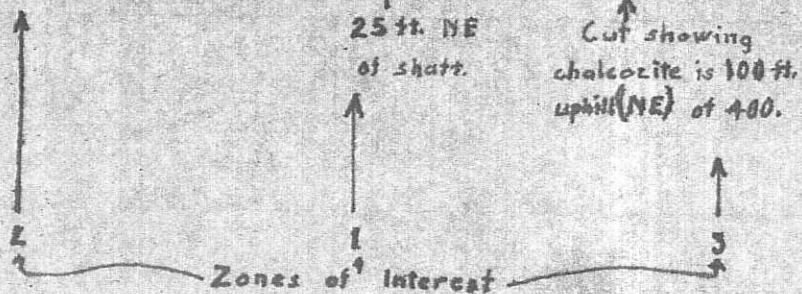
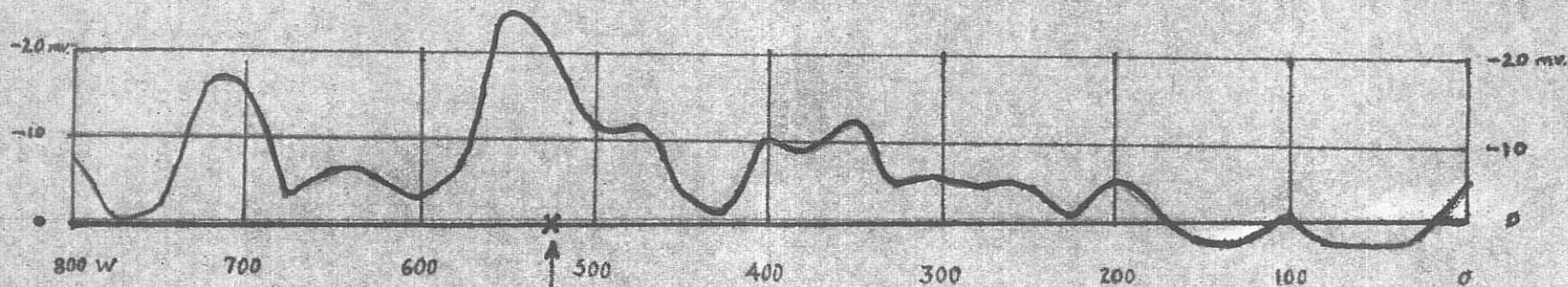
92I/2E
92I/3E-54

Geophysical
Explorations Ltd.

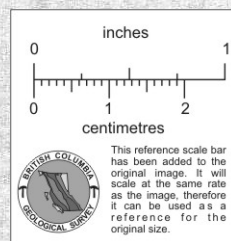
Poreupine Group

Spontaneous Polarisation Test. May 21, 1963

Sherwin F. Kelly
John McGoran



Line runs
N 53° W



Scales

1 in = 20 millivolts.

1 in = 100 ft.

010529

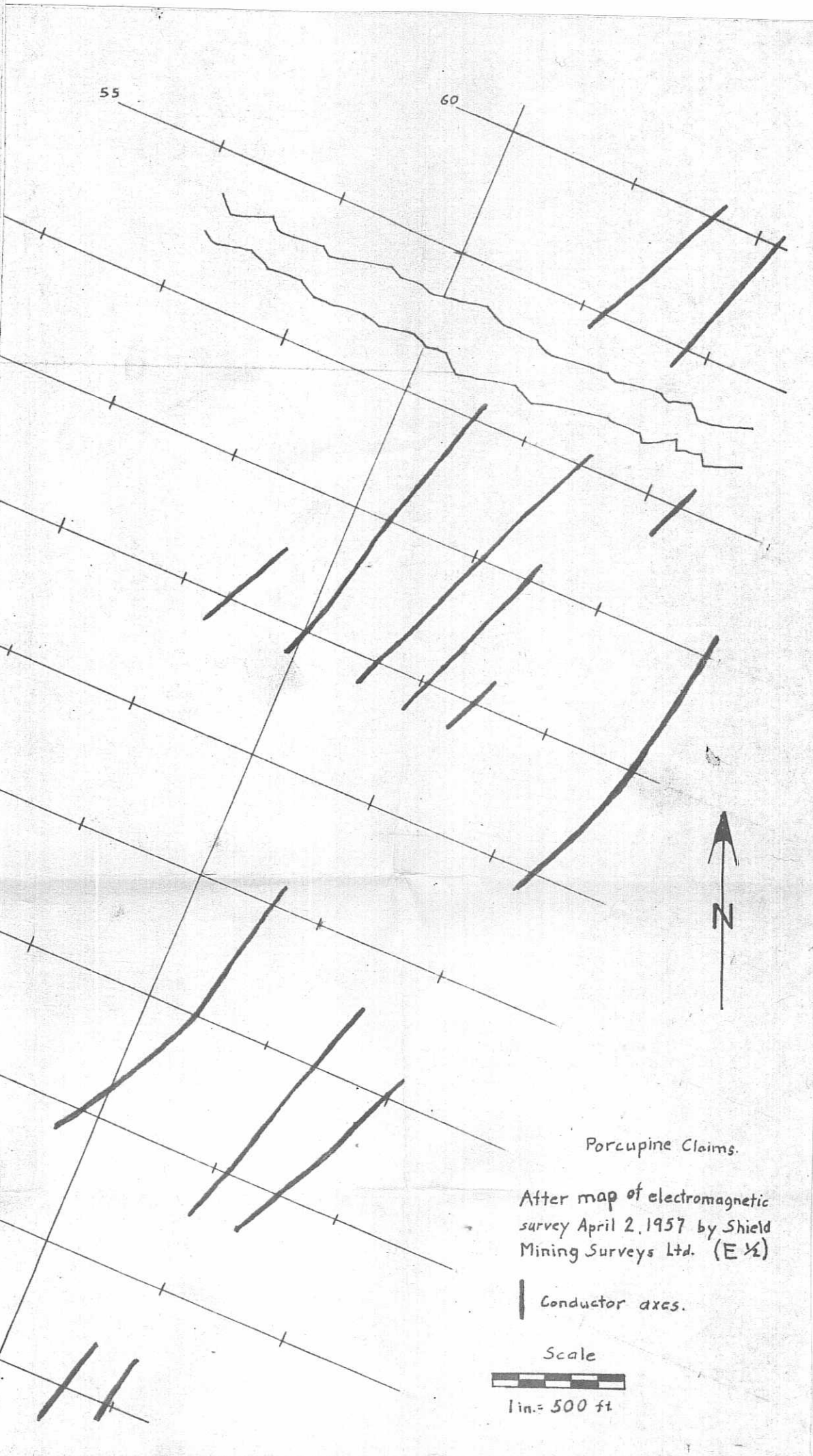
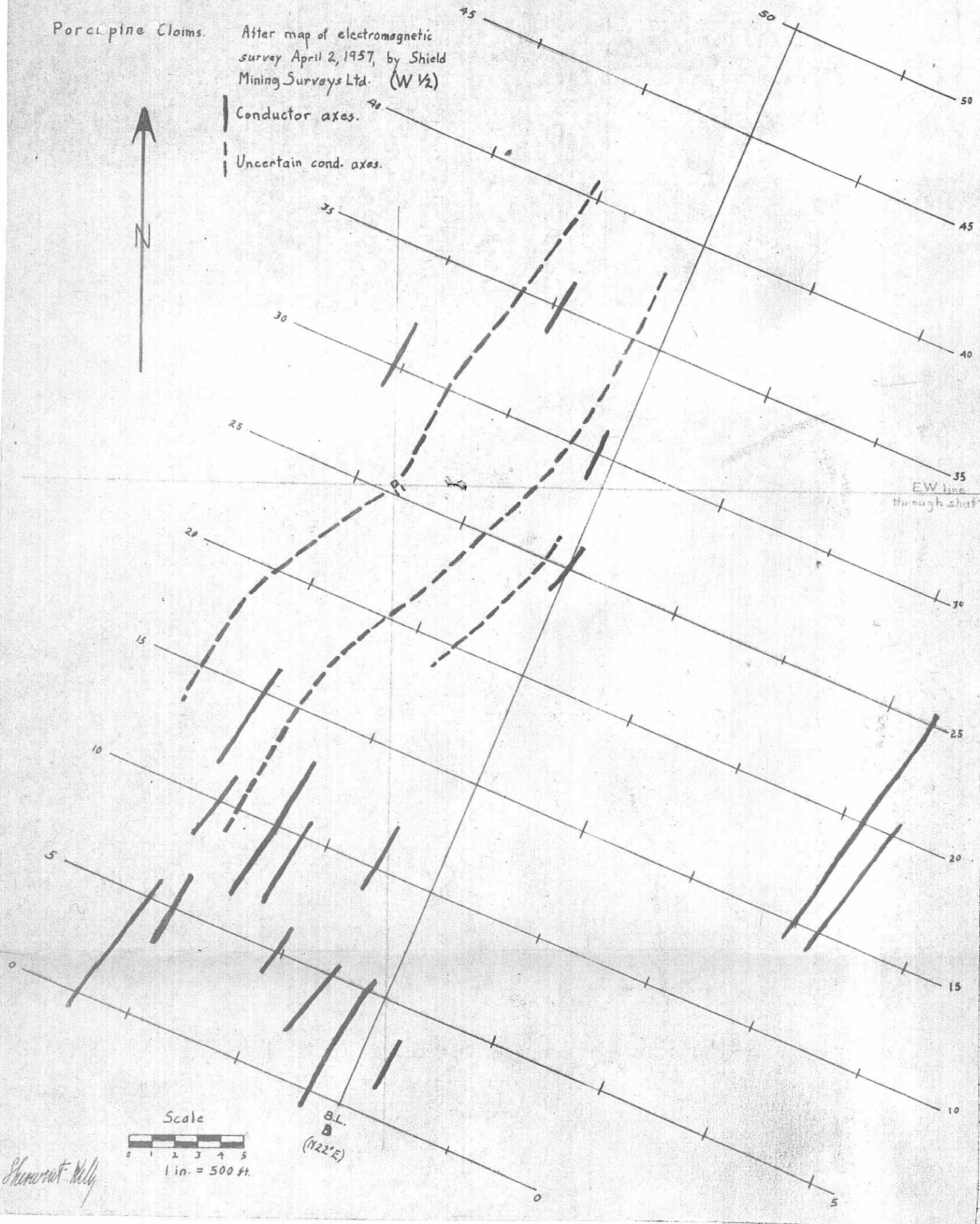
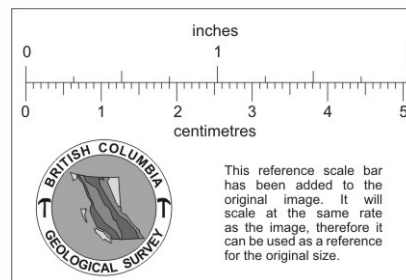
Sherwin F. Kelly

Porcupine Claims.

After map of electromagnetic
survey April 2, 1957, by Shield
Mining Surveys Ltd. (W 1/2)

Conductor axes.

Uncertain cond. axes.

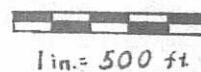


Porcupine Claims.

After map of electromagnetic
survey April 2, 1957 by Shield
Mining Surveys Ltd. (E 1/2)

Conductor axes.

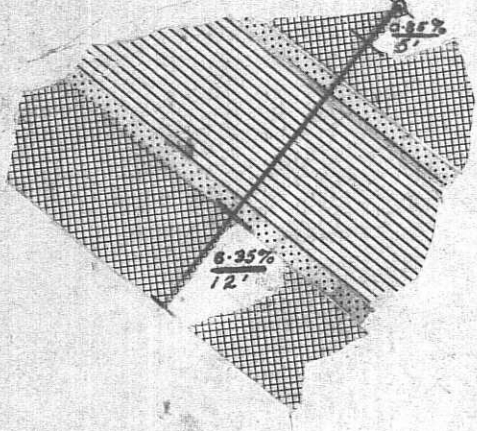
Scale



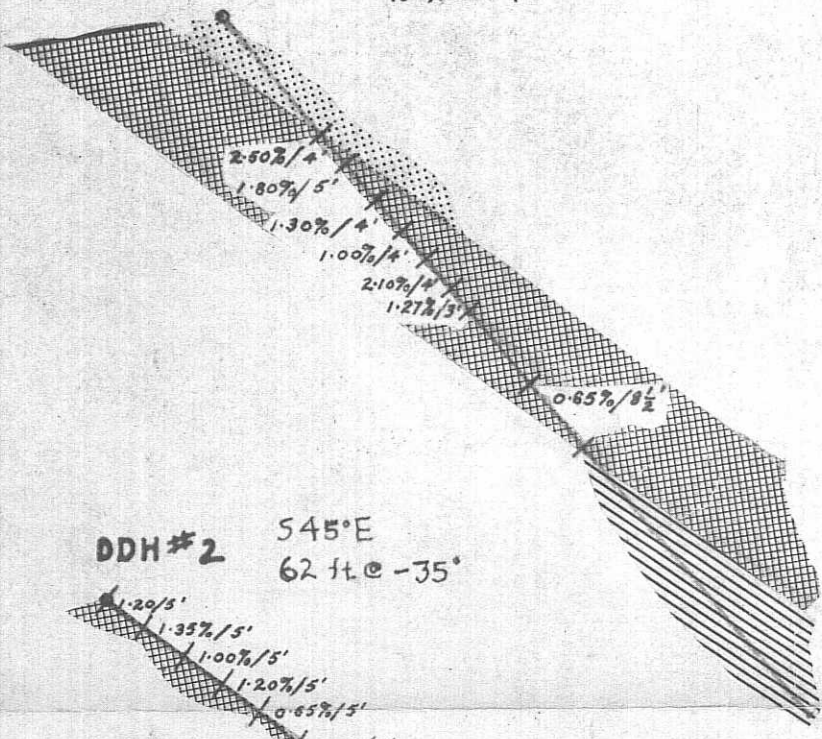
1 in. = 500 ft

Drill Holes, Porcupine Group

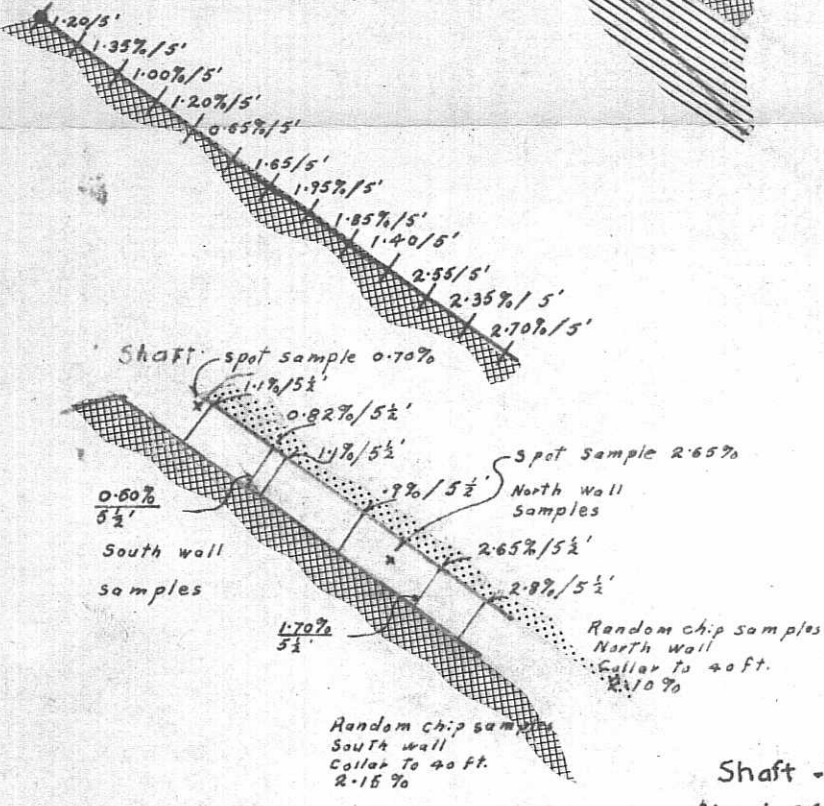
DDH #4 N 40° W
40 ft @ -52°



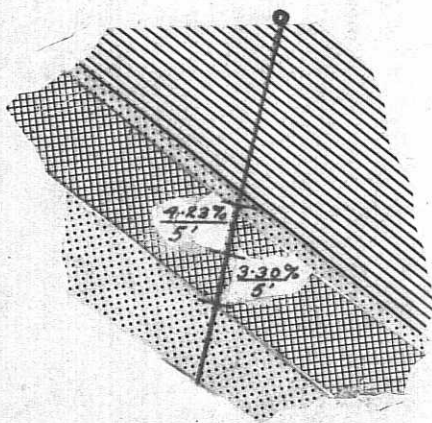
DDH #1 S 45° E
96 ft @ -49°



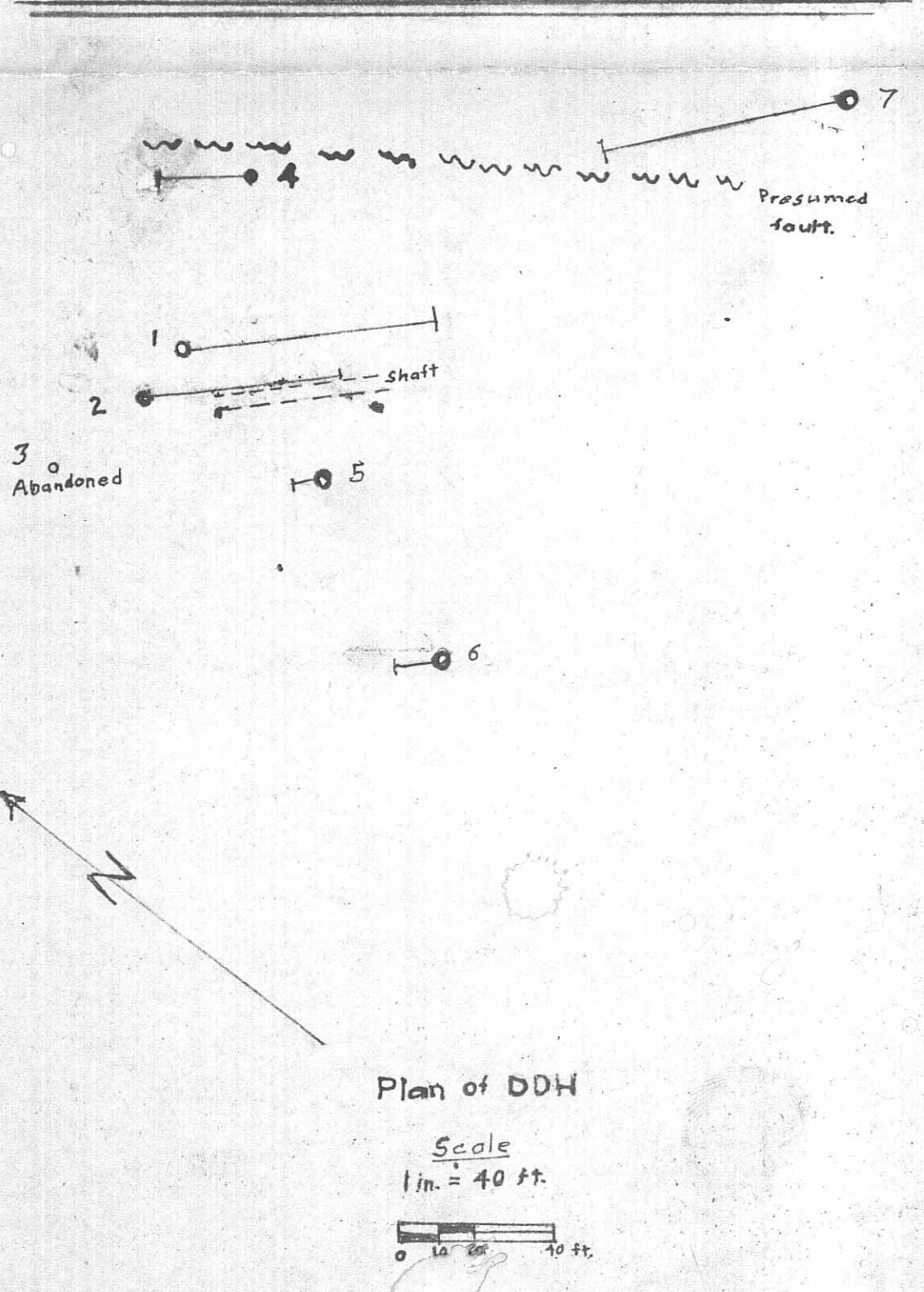
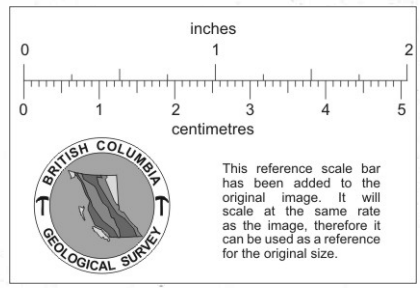
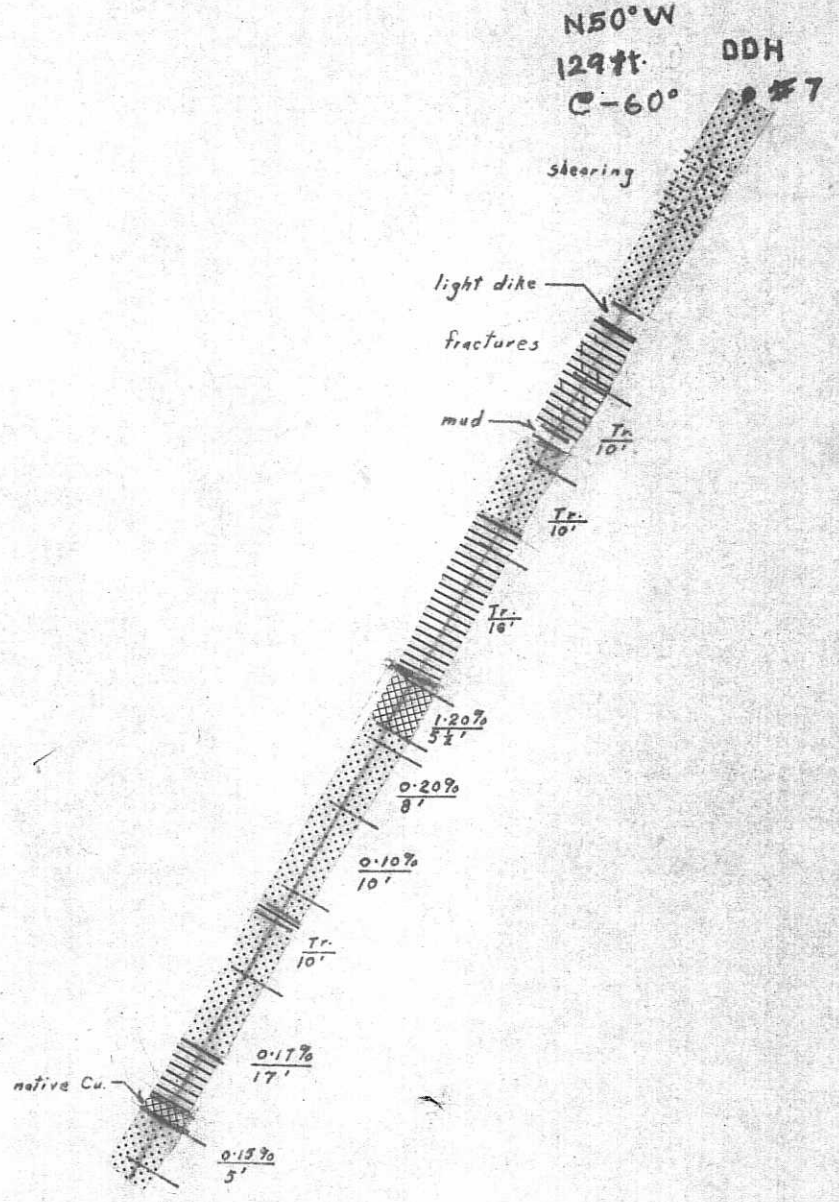
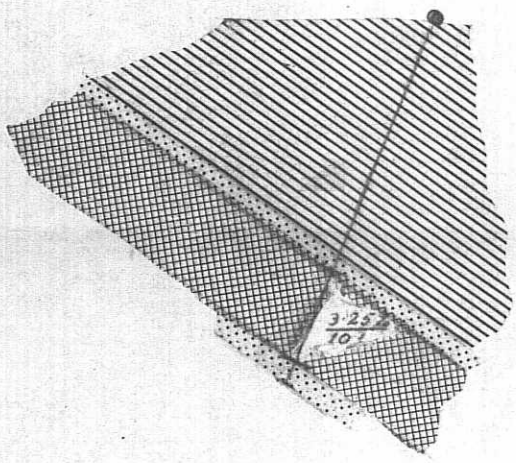
DDH #2 S 45° E
62 ft @ -35°



DDH #5 N 50° W
40 ft @ -77°



DDH #6 N 45° W
40 ft @ -68°



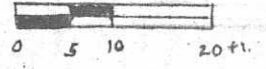
Amalgamated Resources Ltd.

Porcupine Claims near Aspen Grove, B.C.

Assay Sections on DDH and Shaft.

Looking NE for all sections.

Scale
 1 in. = 20 ft.



Separation of sections not to scale.

Legend.

- DD Holes.
- ▨ Tuff.
- ▨ Andesite.
- ▨ Copper-bearing formations (andesites).

Assays

$\frac{6.35}{12}$ Numerator gives % copper. Denominator gives width in feet.

After maps and data from Paul Polishuk. By Sherwin E Kelly and John McGoran. Dec 31/63