

132  
134 < 1605  
135  
1790  
4662

L.4553.  
DDI on LP#1 } see 2 LP#s near  
of Underhill &  
other LP# 2 fr. Underhill.

PL 24 ~~Lawrence~~

(Topin)  
LP# 2

D.L. 4553 (covered by bracketed  
cls.)

D.L. 134  
(C.G.)  
(1887)  
(J.D.R.  
Whitaker)  
of Conn. (Mich.)

D.L. 132 (C.G.)  
(1886)  
(undivided).

LP# 1  
(Topin)

except precious metals

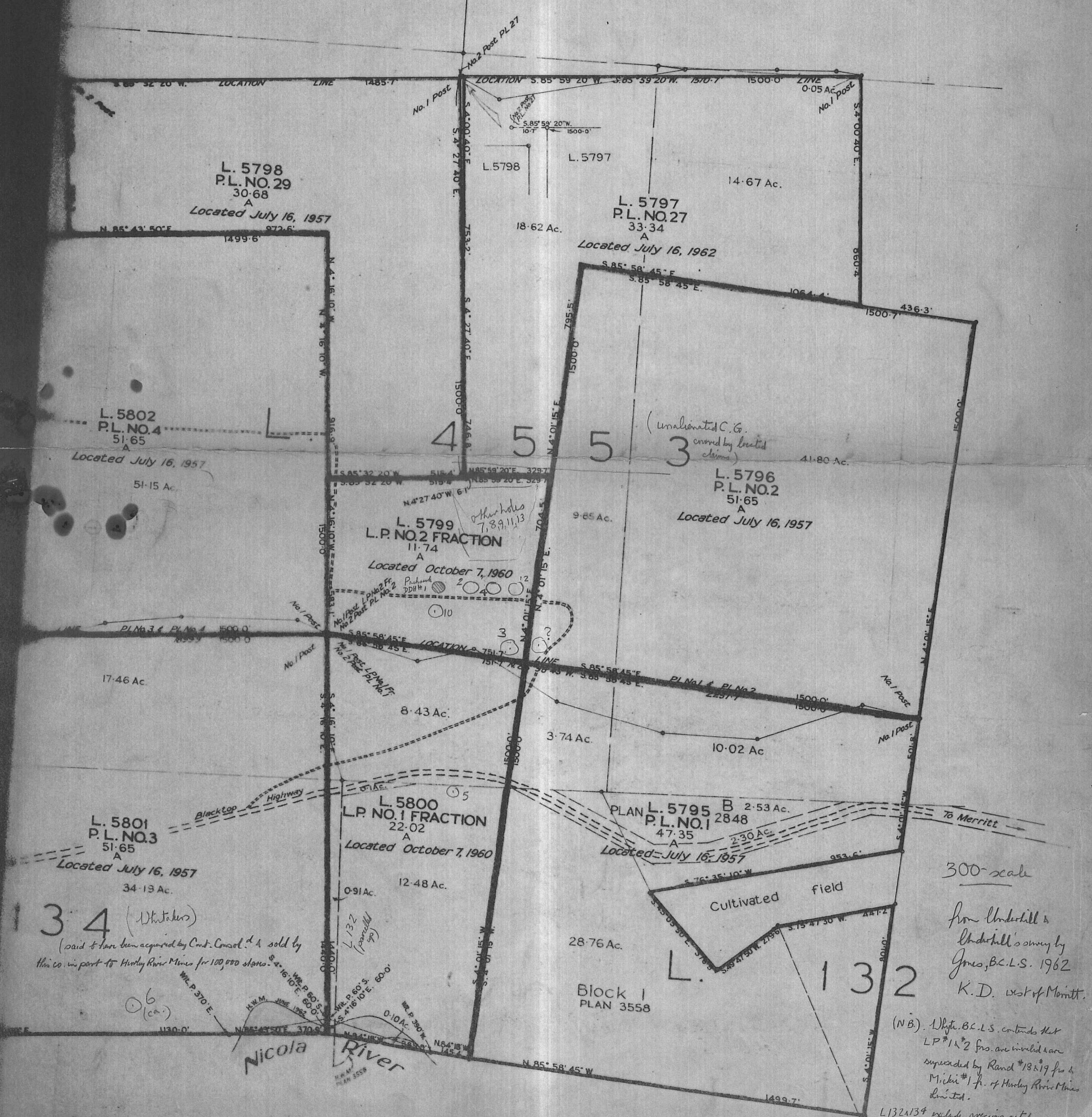
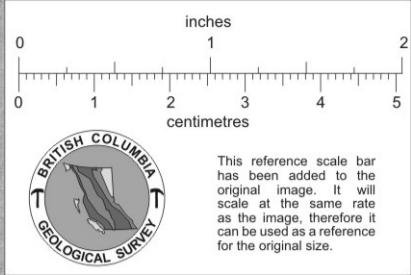
White amp LP fs appear to be invalid  
P.L. given 1-30 1957  
LP fs Oct 60  
Rann Apr 61 (Hans Harroten)  
P. Poloschuk } Rand &  
& W.A. McElbroad } Michalek  
(Mar-May 62)

(Rand #18, 19 & Michalek #1 fr, see 2  
White & his sketch, take precedence over LP fs.)

010487

P. Hills  
Hurley, Campd Ex  
& Cont. Consol.

L. 1605



(unallocated C.G. covered by located claims)

Other holes 7, 8, 9, 11, 13

3.4 (Whitaker)  
(said to have been acquired by Cont. Consol. & sold by this co. in part to Hurley River Mines for 100,000 shares)

6 (ca)

300-scale  
from Underhill & Underhill's survey by Jones, B.C.L.S. 1962  
K.D. west of Merritt.

(NB) - D. Hyatt, B.C.L.S. contends that LP #1 & 2 frs. are invalid & are superseded by Rand #13 & 19 frs. & Mike #1 fr. of Hurley River Mines limited.  
L132 & 134 include previous notes