

GW (c.c.s.) = N.W. GW type
"GW" (c.c.s.) = Small type

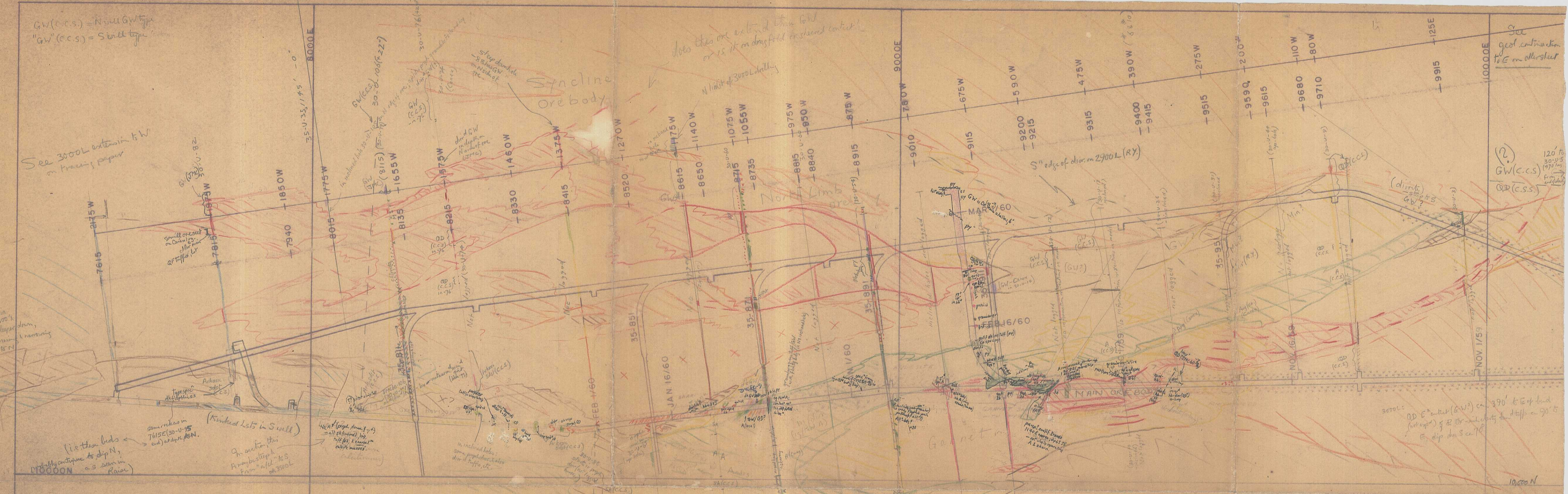
See 3000L extension to W
on tracing paper

Does this one extend to the NW
or is it on drag field instead of contact?

See
geol. continuation
to E on other sheet

(?)
GW (c.c.s.)
QD (c.c.s.)

3000L: QD E contact (GW) ca. 390' to E of bed
(position) of R. Dr. and contact in staff on 90's
E. dip on S. ca. 10°



Cross-fault
somewhat in the
dip offset?

Arctic silt (c.c.s.)
30-U-73 (+46)
30-U-66
30-U-64 (+51)
30-U-37 (minic. hole)
30-U-28 (+19)

CCS has T(R-F-74)

(log book is from U.S. file)

Conc. illustrate bed plan
geology some outlines
copied by sketching at mine
office Feb 6/62 - shown
by cross-hatching & schematic
boundaries. - all printed
notes pre-date this except
where noted.

