

9217W 092ISE023
 MINER 21 JAN 82

A geophysical program is under way on Lawrence Mining's Vimy prospect in the Highland Valley near Merritt, B.C. To date, the company has diamond drilled 30 holes on the silver-copper-molybdenum prospect for a combined length of 17,777 ft. and 30 percussion drill holes totalling 7,750 ft. Twelve diamond drill holes were completed since October. Significant copper, molybdenum and silver values were discovered.

The 1981 field season indicated a new mineralized zone, southwest of the main zone, or a possible extension of the present zone.

Lawrence plans further investigation of the Salish Mountain prospect 30 miles from the Vimy with regard to its possible purchase.

MINER 4 MAR 82

Lawrence Mining drills near Merritt

The management of Lawrence Mining Corp. is pleased with results to date on the Vimy prospect near Merritt, B.C., reports Paul Frigstad, president.

A total of 30 diamond drill and 30 percussion drill holes have been completed. Encouraging intersec-

tions have been obtained in a dozen diamond drill holes. Among the better intersections on the main zone, hole 19 returned 66 ft. of 0.57% copper and 0.24 oz. silver per ton; hole 21 cut 112 ft. of 0.37% copper and 0.07 oz. silver per ton, and hole 27 intersected 72.6 ft. of 0.48% copper, 0.12 oz. silver per ton and 0.01% molybdenum.

Approximately 1,000 ft. southwest of the main zone is an indicated new mineralized zone or the possible extension of the main zone. The 1982 program will continue in this area in addition to a move easterly.

This year's plans also include resumption of work on the Patch copper-bismuth prospect near the west shore of Great Bear Lake, Northwest Territories, and the acquisition of additional properties in the N.W.T.

9217W 092ISE023

GCNL #72 16 APR 82 LAWRENCE MINING CORPORATION RATION 9217W 092ISE023

DIAMOND DRILL PROGRAM - Lawrence Mining Corporation president Paul Frigstad has reported that FOR 1982 NOW UNDERWAY with the completion of a new geophysics program, drilling has resumed on the company's Vimy claims, a copper-gold-silver-moly prospect in the Highland Valley near Merritt, B.C. The drilling will attempt to define the new anomalies located with the geophysical survey completed in the last 90 day period.

Lawrence has acquired four properties in the Northwest Territories. Further exploration for gold and base metals is planned for these properties later this year. The total cost for the claims was \$15,000 and 50,000 common shares of the company. To date \$15,000 has been paid and 12,500 shares have been issued. Further issuances of 12,500 shares will follow every three months until a total of 50,000 shares of the company have been issued.

GCNL #142 26 JULY 82 LAWRENCE MINING CORPORATION 9217W 092ISE023

Diamond Drill Hole No. 82-33					
Intersection	Length	Copper	Oz. silver/t		
85-86	meter 1 meter 3.3 ft.	2.30%	0.36		
111-117	" 6 " 19.8	.24	.05		
127-133	" 6 " 19.8	.19	.06		
145-149	4 13.2	.34	.08		

Paul Frigstad, president of Lawrence Mining Corporation, has reported that encouraging results have continued from the drilling program on the property in the Highland Valley, 40 miles west of Merritt, B.C. The hole No. 82-33 is located 200 meters south and east of diamond drill

VIMY TYE

hole 81-26. Diamond drill hole 81-26 was drilled in the main zone. Hole No. 82-33 is into what is believed to be a separate zone. The company plans to continue geophysical surveys on the property in preparation for resumption of diamond drilling as soon as the public financing market permits raising of additional funds.

921/74 9215023

Hole No.	Interval Meters	Intersection Meters	Feet	Copper	Oz. Silver/t	Molybdenum
19	98-113	20	66	.57%	0.24	
	including	2	6.6	1.95	.50	
	140-150	10	33	.25	.18	
20	66-83	11	22	.17	.08	
	105-123	22	73	.32	.09	
	including	2	6.6	1.98	.50	
21	120-154	34	112	.37	.07	
	including	2	6.6	3.10	.17	
	90-120	30	99	.37	.18	
	including	2	6.6	1.13	.17	
	including	2	6.6	1.43	1.40	
22	52-60	8	26	.29	.08	
23	72-82	10	33	.54	.15	
	including	2	6.6	1.07	.29	
	116-130	14	46	.58	.14	
	including	2	6.6	1.70	.23	
24	92-104	12	40	.66	.15	
	including	2	6.6	2.11	.35	
25	94-104	10	33	.18	.07	
26	53-86	22	73	.14	.10	
	112-120	8	26	.18	.12	
27	158-180	22	72.6	.48	.12	0.01
	including	2	6.6	1.36	.32	.009
	including	2	6.6	1.16	.20	.021
28	116-124	8	26	.54	.28	
	238-242	4	13	.15	.15	.10
29	234-240	6	20	.23	.11	.04
	252-270	18	59	.13	.09	.08
	including	4	12	.17	.09	.11
	including	4	12	.18	.06	.13
	300-306	6	20	.27	.15	.003
30	153-170	32	106	.07	.51	
	including	4	13	.13	2.4	
<u>Percussion Drill Holes</u>						
10	110-140	9	30	.42	-	-
25	60-160	30	100	.33	.06	
	including	3	10	1.15	.12	

RESULTS OF RECENT DRILL HOLES ON HIGHLAND VALLEY COPPER PROPERTY REPORTED

Paul Frigstad, president of Lawrence Mining Corporation has reported the completion of the 1981 field season on the Vimy prospect, located in the Highland Valley, near Merritt, B.C. The program has been temporarily suspended for the holiday season. Maurice Liathieu, exploration manager, has organized a program of overhaul for all of the exploration equipment in preparation for continuation of the property work into 1982. Induced polarization surveys are underway in selected areas of the property.

Property work to date has included: construction of 3 miles of new road, 10 kilometers of magnetometer survey; 30 km of induced polarization survey, collection and evaluation of 4,000 soil samples. Diamond drilling has included 5,387 meters in 30 holes, while 30 percussion holes have a total of 2,238 meters of sample. (For assay results of early holes on the property see GCNL No.179, 181 and 203(1981).

One thousand feet east of the main zone is an indication of a new mineralized zone or the possible extension of the present zone of mineralization.

The new area has been named the 10-25 zone and has been tested by the No.10 and No.25 percussion drill holes.

Mr. Frigstad points out the diamond drill hole No.29 is significant since it has good grade molybdenum at depth. It was collared 1,000 feet to the east of the mineralized zone and drilled to the west. It was designed to intersect the zone at approximately 1,000 feet of vertical depth. Diamond drill hole No.30 was drilled to the northeast from the No.28 diamond drill-hole collar. Although a good grade of silver was intersected, the hole was suspended short of the molybdenum target and will be completed as soon as possible. The 1982 program will continue in this new area.

One of Lawrence's engineers has indicated that this trend of mineralization "being of a volcanogenic origin has made its final resting place some 900 feet to the east of drill holes No.28 and No.29." The current geophysical program is attempting to substantiate this theory. If anomalous, the area will be drilled in the 1982 season.

The president states, "Lawrence is frequently approached by property vendors and while recently the management declined to purchase some claims adjacent to the Vimy property offered by certain directors of Lawrence, they are looking at a property near the Coldwater River, approximately 50 kilometers from the Vimy ground. This property, the Salish Mountain prospect, has been grab sampled over 12,000 square feet where outcrop is present. Acquisition is subject to regulatory authority approval.

Lawrence Mining has exploration plans for its property in the Yellowknife, N.W.T. area in the 1982 season.

GCNL #203

23 OCT 81

LAWRENCE MINING CORPORATION

09215E023

MORE GOOD DRILL - Paul Frigstad, president of Lawrence Mining Corporation, announces results of copper and silver assays in diamond drill Holes 16, 17 and 18 on the company's Vimy property, a copper-silver-gold-molybdenum prospect in the Highland Valley area near Merritt, B.C. For background story on this property together with drill hole locations and previously intersected mineral zones, see GCNL181(81) page 2 and the diagram on the back of that page. Holes 16 and 17 were drilled at -65° and

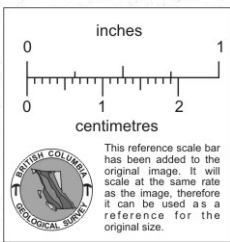
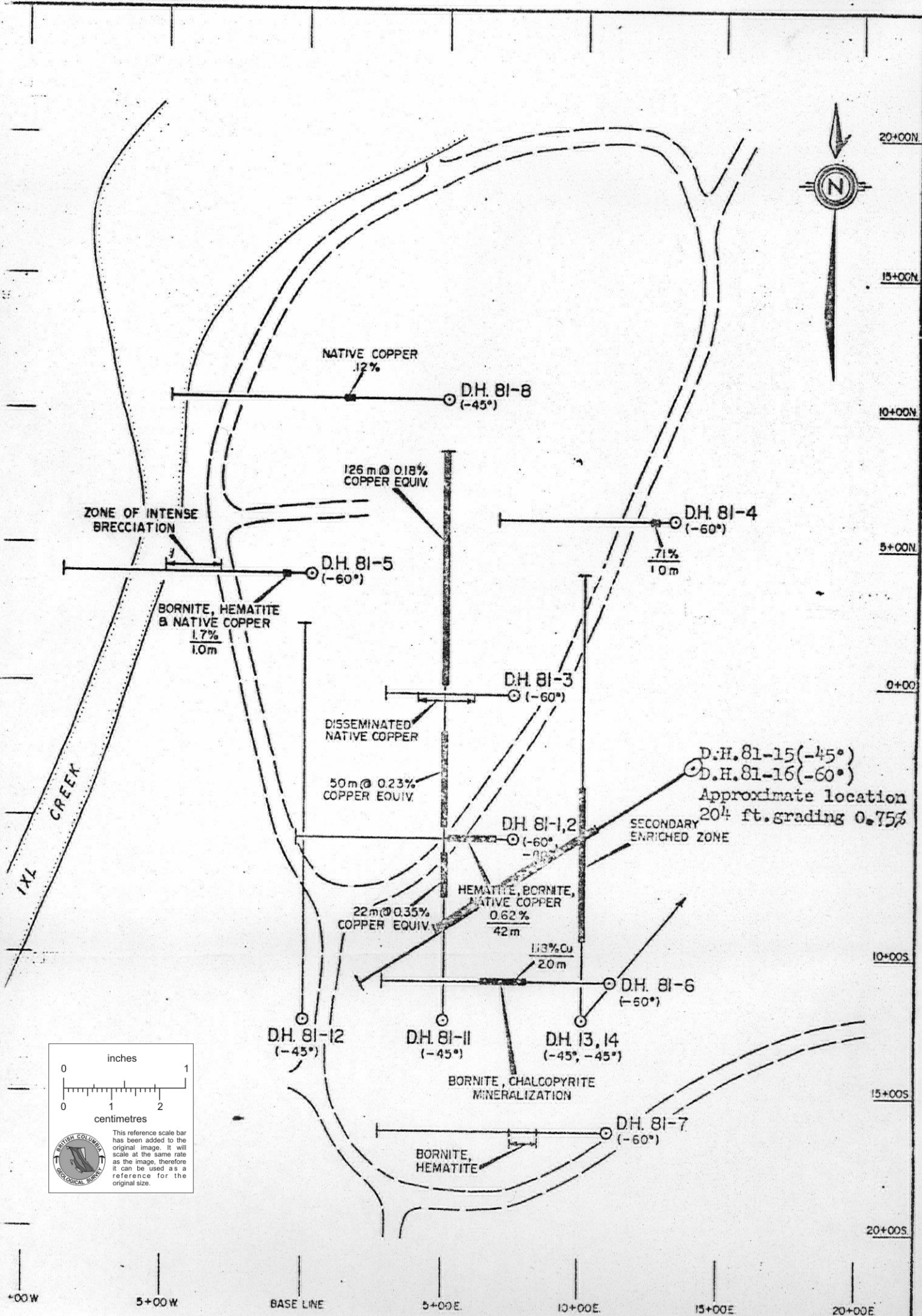
Hole No.	Interval Meters	Length Meters	Length Feet	Copper %	Silver Oz/T
16	90-140m including 110-122	50 m	165 Ft.	0.58%	0.22
17	106-116 156-166 194-203	10 10 9	33 33 30	0.37 0.35 0.22	0.37 0.15 0.20
18	68-98 including 76-84	30 8	90 26	2.58 7.73	0.18 0.50

-85° angles, respectively, and are collared from the same location as Hole 15. Hole 18 was drilled at a -45° angle from a site 25 meters (82 feet) south of holes 15, 16 and 17.

Because the presence of gold and molybdenum is sporadic, assays of those metals have not been included in the present report.

Mr. Frigstad notes that, with \$538,000 received on 21Sep81 from

exercise of 98% of the issued warrants, Lawrence Mining netted over \$1,000,000 from their recent unit offering.



LAWRENCE MINING CORPORATION

**DRILL HOLE PLAN
VIMY CLAIM GROUP
NICOLA MINING DIVISION, B.C.**



JW SEPT 1981

GCNL #181 22 SEPT 81 LAWRENCE MINING CORPORATION.

(7217W) (092ISE023)

DISCOVERY OF NEW COPPER ZONE - Leif Ostensoe, geologist and director of Lawrence Mining Corporation, provided the following outline when questioned about the events leading to the good grade copper drill hole, No.15, on the property located near Merritt, B.C. (See GCNL No.179, page two, and map overleaf.)

The discovery was made on the old Vimy property in the immediate area of the old Vimy workings. It is an example of how old properties have to be re-evaluated using new ideas. The original Vimy discovery was made in the late 1880's and small shipments were made during the 1930's when the nearby Aberdeen Mine was in production. Kennco explored the property in 1956 and 1957, drilled a series of holes, guided by primitive geochemistry and sparse outcrops. These diamond drill holes failed to intersect the main zone discovered by Lawrence but did indicate a large low grade breccia zone.

Lawrence started working on the property in August 1979. Geophysical surveys showed little. There was a bulldozer trench dug showing good rock structure with copper staining. A large bulldozer (TD 25) was used to deepen the trench to about 40 feet to reveal widespread brecciation associated with volcanic activity.

Diamond drilling started in April 1981 to retest the Kennco drilling and to follow up some geophysical anomalies. In May, Lawrence started a modern expensive 'state of the art' geophysical survey. He said that June and July were spent drilling blanks based on this and similar surveys. The volcano that caused the brecciation was discovered in hole No.9 but located little of real value.

In August, after extensive geological discussion, it was decided to re-drill the original area of the Vimy trench in a north-south direction, that is in the opposite direction to that drilled by Kennco and the early Lawrence drilling which was all to the west. The early drilling had assumed that the geophysical surveys had outlined the mineralization. The more recent drilling ignored the geophysics and was based on a geological interpretation.

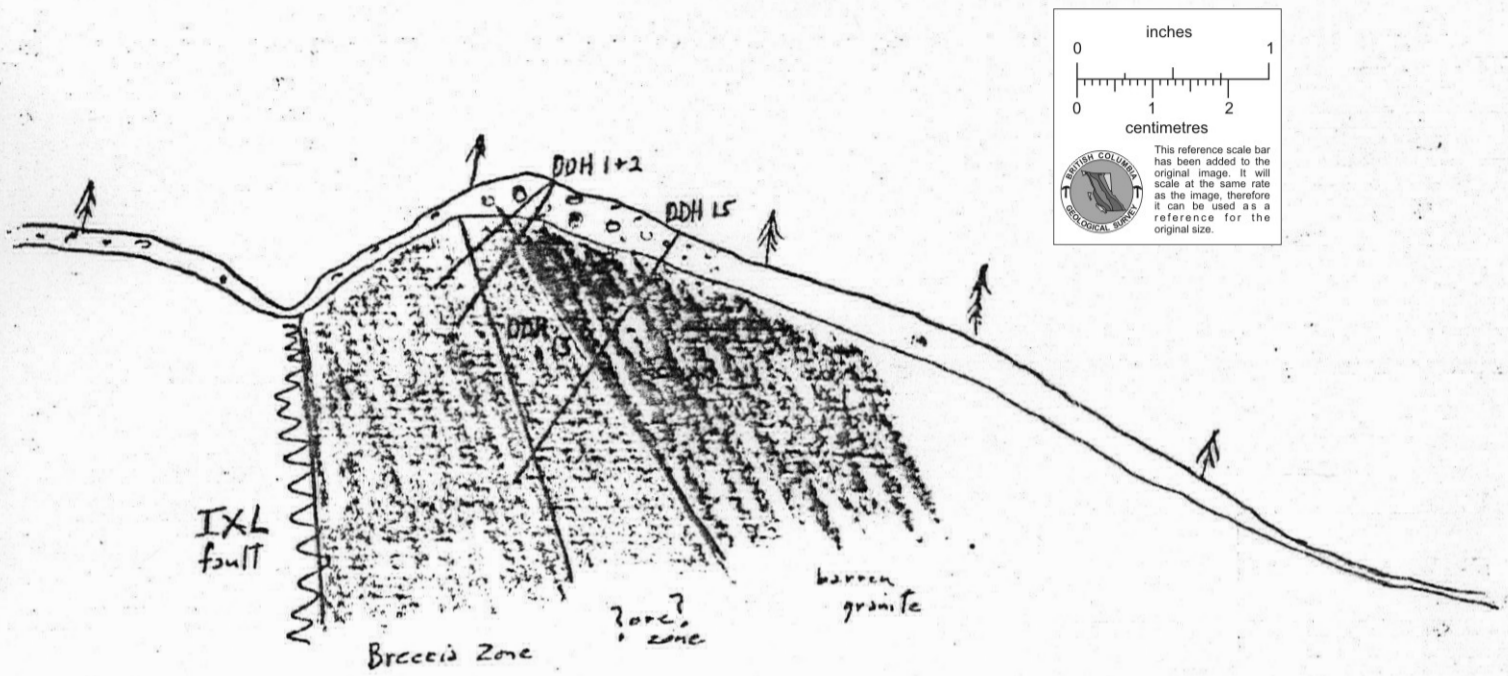
Hole No.11 cut 700 feet of breccia which carried three good zones of copper mineralization. (See table of assays in GCNL No.179) Hole No.13 was located to the east of No.11 in an area of no geophysical response. Hole No.15 was drilled through a huge gravel pile, over 100 feet thick and which took over a week to penetrate. This hole was drilled from much further to the east than had any previous and was seeking structural information in the area of No.13 hole. No.15 was drilled to the southwest at -45° and cut 204 feet of 0.75% copper lying between the breccia zone and an overlying barren granite.

The actual mineralization on the surface is hidden by a long narrow swamp. The lower breccia zone was too low grade to be mined without a higher grade section. Previous drilling had never gone through the barren overlying granite. Kennco had stopped several holes short in the barren granite. Between the lower breccia zone and the upper barren granite is a zone approximately 200 feet wide carrying good copper and minor silver. This zone dips to the east under 100 feet of overburden.

Mr. Ostensoe concluded, "Because of these factors, the most modern geophysical survey failed to reveal what would normally be a routine discovery. Because of our willingness to drill without geophysics and geochemistry, but rather to follow geology, we found the zone."

LWE

LAWRENCE MINING CORPORATION



Idealized X-Section - Vimy property - Merritt, B.C.

L. Osterson

①

921715 09215E023
 MINER - 27 AUG 81

Lawrence Mining reports its drilling program on the Vimy property in the Highland Valley near Merritt, B.C., has completed 6,204 ft. of diamond drilling in 11 holes and 1,019 ft. of percussion drilling in seven holes.

Copper percentages varied from 0.19% across a 92 ft. section to 0.38% across a 40 ft. section.

Other targets are planned for the percussion drill program to test induced polarization and geochemical anomalies.

MINER SEPT 10/81

Lawrence Mining has received assay results from hole no. 13 on its copper silver-gold-molybdenum prospect in the Highland Valley near Merritt, B.C. One 99-ft. core interval averaged 1.37% copper and 0.21 oz. silver with a 20-ft. portion in that section returning 4.67% copper and 0.56 oz. silver per ton. The hole was drilled to 700 ft. and was still in mineralization when drilling was discontinued. Drilled at 45 degrees, the intersection in question began approximately 188 ft. down the hole. Diamond and percussion drilling is continuing.

VIMY TYP
 921715 09215E023

GCN #179 18 SEPT 81 LAWRENCE MINING CORPORATION

Hole No.	Interval Meters	Length		Copper	Oz. Silver/t
		Meters	Feet		
No. 1	11- 81	70	210	0.47%	
No. 2	14- 86	72	230	.36	
No. 11	65- 87	22	73	.36	
	99-131	32	106	.26	
No. 13	234-246	12	40	.38	
	55- 88	33	99	1.32	0.21
	including	7	22	4.67	
No. 15	55-117	62	204	.75	0.20
	55- 79	24	80	1.0	
	87-117	30	100	.71	

921715 09215E023
 DETAILS OF THE MOST RECENT AND MOST IMPORTANT HOLE REPORTED

Full detail of the results of the most important drill hole on the Vimy property, of Lawrence Mining Corporation have been provided in the table to the left. See also the layout of the hole locations as shown in the sketch overleaf. The next hole in the current series, No. 16, is now drilling just down the hill from the No. 15 hole and at a steeper angle in an effort to cut the zone at a greater

depth. The property is near Merritt, B.C. Leif Ostensoe, director, reported that the current geological interpretation is that the hole No. 15 intersection is in the same structure as the intersections in Hole No. 1 and No. 2 and about 300 feet down the dip length. Hole No. 13 is believed to have cut the same structure but at right angles to the intersection in No. 15. Hole No. 11 is close by but likely in a parallel structure. Diamond drilling is continuing.

The property and results are currently being examined by a senior exploration geologist.

GCNL #85 5 MAY 81 LAWRENCE MINING CORPORATION 92I17W 092ISE023

FIRST DIAMOND DRILL HOLE - Lawrence Mining Corporation has received assay results from the ASSAY RESULTS ANNOUNCED first two holes of its diamond drill program. The first hole in the 1981 program was drilled at -60° to a depth of 156 metres. The second diamond drill hole was drilled at -80° to a depth of 147 metres. The company's claim group is located in the Highland Valley near Merritt, B.C. VIMY

The first diamond drill hole from 17.0 meters to 71 meters, a distance of 54 meters, assays averaged 0.037 oz. silver per ton and 0.62% copper. The No.2 diamond drill hole from 38 to 74 meters cut 36 meters grading 0.015 oz. silver per ton and 0.52% copper. In hole No. 1, the 0.5 meters between 87.5 and 88 assayed 0.035% molybdenum. Drilling is continuing.

A geochemical survey has been completed over 16 kilometers of the known mineralized zone and an induced polarization survey is to be run.

GCNL #119 23 JUNE 1981 LAWRENCE MINING CORPORATION 92I17W 092ISE023

Assay results from the current diamond drill program on the Vimy zone are as follows:
Hole No.3 encountered 20 meters of low grade mineralization-basically missed the zone.
Hole No.4 cut one meter from 14.5 to 15.5 of 0.71% copper, 0.12 oz. silver/t, plus 8 meters of lower grade material.
Hole No.5 cut 14 meters from 17.5 to 31.5 of 0.37% copper, 0.13 oz. silver/t, including a two meter section of 1.6% copper, 0.42 oz. silver/t.
Hole No.6 cut two meters from 86.05 to 88.05 meters of 0.52% copper, 0.19 oz. silver/t, plus from 68.05 to 70.05 of 1.18% copper, 0.28 oz. silver/t, remaining 20 meters of low grade material.

Paul Frigstad, president of Lawrence Mining Corporation has reported, first, on the recent assay results of the drilling of the high grade copper zone on the Vimy property west of Merritt, B.C. and, second, on the location and start of testing of two new large anomalous targets on the same property.

The two zones of anomalous readings are (1) 300 meters north of the Vimy showing called the North Zone and (2) 300 meters south of the Vimy showing called the South Zone.

The new anomalous areas were first located by soil sampling with readings from 10 to 100 times background. The follow up magnetometer survey located several magnetometer

low locations over the geochemical highs. The induced polarization survey confirmed the anomalous areas.

On June 16, 1981, the drill program was moved to start the first of a series of deep diamond drill holes on the North zone. It is planned to drill three or four percussion holes to approximately 130 meters each to test the South zone in the next few weeks.

GCNL #157 18 AUG 81 LAWRENCE MINING CORPORATION 92I17W 092ISE023

Hole No.	Intersection (Meters)	Footage	Copper %
11	65 to 87m.	73 ft.	0.36%
	99 to 131m.	106 ft.	0.26%
	171 to 197m.	86 ft.	0.22%
	201 to 226m.	82 ft.	0.19%
	234 to 246m.	40 ft.	0.38%
	269 to 297m.	92 ft.	0.19%

Lawrence Mining Corporation is continuing its drill program on the Vimy property in the Highland Valley near Merritt, B.C. Drilling to date includes 1,380 meters (6,204 feet) of diamond drilling in all holes and 309 meters (1,019 feet) of percussion drilling in 7 holes. Diamond drill hole no.11 was drilled north and intersected mineralization from 65 meters into the hole until drilling stopped at 297 meters. Some of the better grade sections are shown in the adjoining table. All copper, silver, molybdenum and gold values have been converted to a copper equivalent at metal values on 12 August 81. Drill testing of other targets is underway.

Trenching and a geochemical survey continue on the company's native property, located approximately 8 km. south of the Teck-Afton mine.

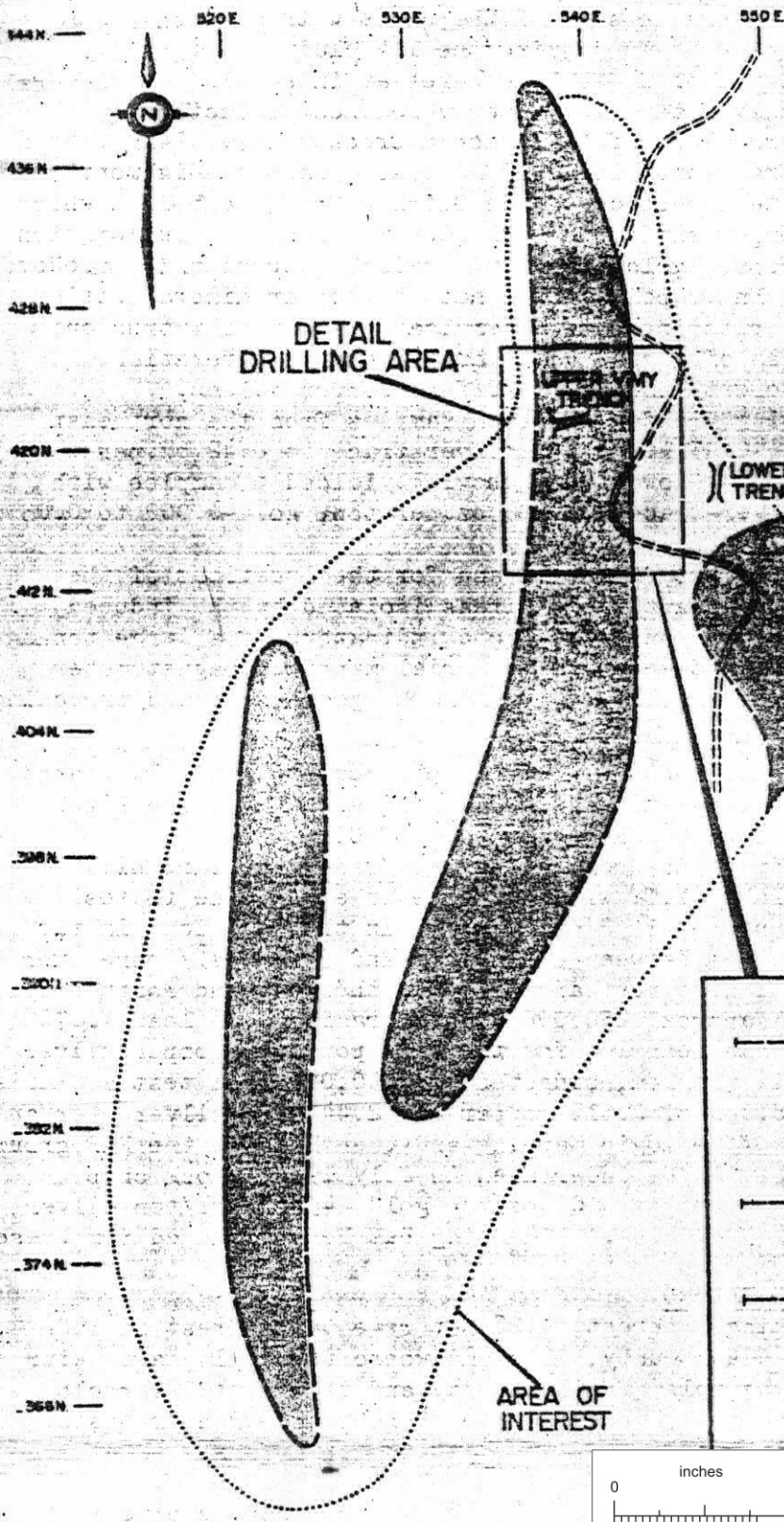
GCNL #163 AUG 26/81 LAWRENCE MINING CORPORATION

DRILL HOLE NO.13 HAS ASSAYED - Lawrence Mining Corporation president Paul Frigstad has reported the first assayed section of diamond drill hole #13. This hole, drilled at a 45° angle and running parallel to diamond drill #11 is located 50 meters (165 feet) west of hole #11. (See GCNL NO.157, page four, 18 Aug 81). These holes are part of the current drill program on the company's copper, silver, gold, molybdenum prospect in the Highland Valley, 32 kilometers (20 miles) north of Merritt, B.C. VIMY

Results from this drill hole include 1.37% copper and 0.21 ounces of silver per ton over a section from 57.3 meters to 87.3 meters (90 feet in length). Six meters (20 feet) of this section revealed a 4.67% copper and 0.56 ounces of silver per ton.

Hole #13 has been drilled to a total depth of 212 meters (700 feet) and was still in mineralization when drilling was discontinued. Complete assay results will be reported as they become available.

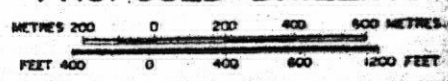
Extensive diamond drilling and percussion drilling are continuing.



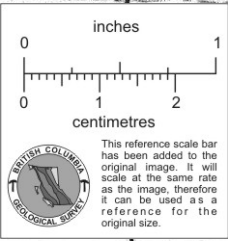
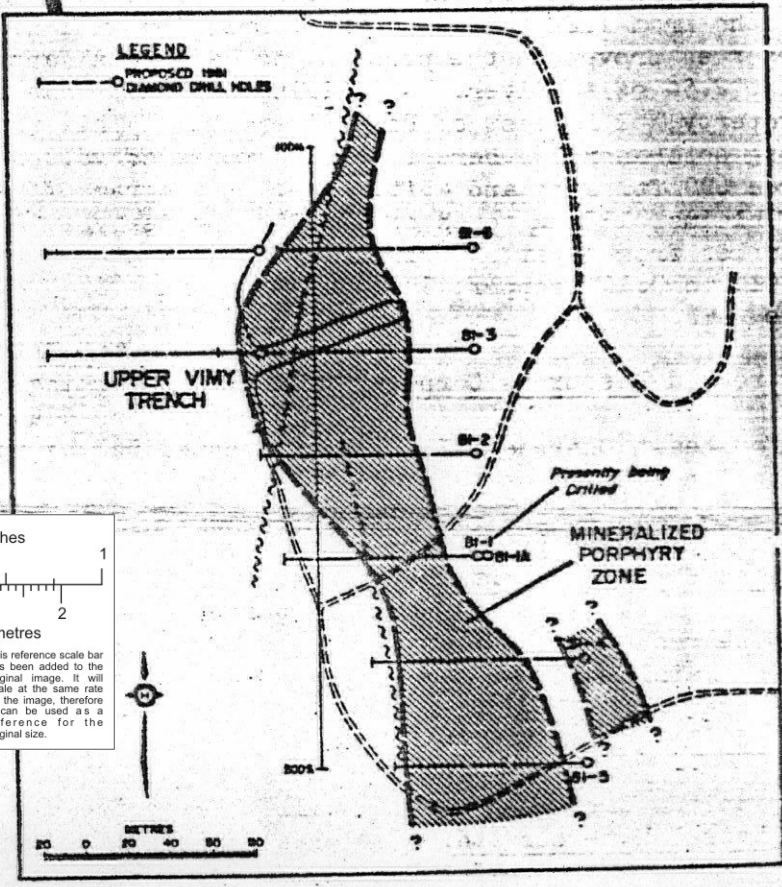
LAWRENCE MINING CORPORATION

VIMY CLAIM GROUP
NICOLA MINING DIVISION, B.C.

PLAN SHOWING I.P. ZONES & PROPOSED DRILLING



I.P. SURVEY ANOMALIES



DRILL HOLE	STRIKE ZONE LENGTH	% COPPER	TOTAL DEPTH
BI-1A			
BI-1			
BI-2			
BI-3			
BI-4			
BI-5			
BI-6			

GCNL #216 07-11-80 LAWRENCE MINING CORP.

B.C. COPPER PROPERTIES - Lawrence Mining Corp. have acquired all shares of Vimy Mining Inc., ARE BEING EXPLORED a private company, by a share-for-share exchange involving the issue of 2,889,775 shares. Before that, Lawrence had 656,453 shares outstanding.

Directors are: Paul Frigstad, president; Errol Hemingson, vice president; Dawn Berry, secretary; Leif Ostensoe, treasurer; Norman Androsoff and Gerald Thompson. Head office is at 506-625 Howe St., Vancouver; phone 688-3236.

Mr. Frigstad reports that an underwriting is being arranged. He says work has continued on the company properties between Merritt and Kamloops, now comprising 164 mineral claim units following the Vimy takeover. On the Vimy group, drilling data have been acquired from Keneco Explorations Limited who briefly explored the property in 1956 and 1957. It appears that 6 old drill holes intersected a mineralized porphyry about 200 feet wide that extends for at least 1000 feet. Geophysical data compiled from work done in 1966 and by Lawrence in 1979 indicate the zone may be 4000 feet long. The old drilling showed copper mineralization but core recovery was very poor. Mr. Frigstad says, "Our drilling will be using bigger equipment and newer techniques so our recovery is expected to exceed previous results."

On Lawrence's Native group near Afton Mines, near Kamloops, B.C., a sizeable gold anomaly with significant values in the soil has been found by geochemistry. Consultants are Seraphim Engineering.

GCNL #79 27 APR 81 LAWRENCE MINING CORPORATION

FIRST HOLE IN 1981 DRILL PROGRAM IN FOR ASSAY - Lawrence Mining Corporation has cut 150 feet of copper and silver mineralization in its first diamond drill hole in the 1981 program. The property is located in the centre of a large claim group owned by Lawrence Mining Corporation about 10 miles north of Craigmont Mines Ltd. near Merritt, B.C. Geologists for Lawrence Mining Corporation described the mineralization as "bornite, sooty chalcocite and native copper. Surface samples gave significant values in silver and gold." Assay reports will be available in about a week.

GCNL #80 28 APR 81 LAWRENCE MINING CORPORATION

HIGHLAND VALLEY DRILL PROGRAM NOW UNDER WAY - Lawrence Mining Corporation's president Paul Frigstad has reported that the first diamond drill hole in the new 6-hole series on the company's Vimy property has been completed. Assays are expected shortly. This early start to the 1981 program has been made possible by the successful financing completed 25Mar81, through the Vancouver Stock Exchange with Walwyn, Stodgell, Cochran Murray Limited as agents. The company sold 300,000 units with each unit consisting of one share and one share purchase warrant with the units priced at \$1.77 each to net the company \$531,000 prior to commission and expenses. There are warrants outstanding to purchase a further 450,000 treasury shares at \$1.86 each until 21Sep81, which, if and when exercised, will provide a further \$837,000 for property development and other exploration projects. Of the 5,000,000 no par value shares authorized, 1,180,521 shares are issued following the sale of the units with a further 450,000 shares reserved for exercise of the warrants. To acquire the 164 claims in the Vimy property, Lawrence Mining agreed to issue a total of 2,889,775 shares at intervals over several years with the final share issue being due only after the property reaches production. The property is located along the Western slope of the Guichon Creek valley, 24km west and north of Merritt, B.C. It is northwest of Craigmont Mines Ltd. and southeast of Highmont Mining Corp. The claims are in the southeastern section of the Guichon Creek batholith which is the host of a number of large porphyry copper and copper-molybdenum deposits. Exploration work on the claims has located a number of copper-gold-silver mineralized deposits. In an 8Nov80 report on the property Dr. R.H. Seraphim, P. Eng., points out that the copper mineralization is present: where fine grained young granodiorite intrudes older coarser grained intrusion; adjacent to a structural lineament; in an area of magnetic low and intensive alteration. Surface trenching in several areas of the property show good surface copper values.

Recent trenching on the Upper Vimy showing yielded thirteen samples from the northeast trench which showed a range of assays: copper-0.05% to 2.7%, silver-trace to 0.42 oz. per ton, gold-0.001 to 0.016 oz. per ton. Trenching in the lower Vimy showing yielded 6 samples with a range of assays: copper-0.05% to 0.80%, silver-trace to 0.20 oz. per ton, gold-0.002 to 0.03 oz. per ton.

See the map overleaf for the detail of the trench assays and for the locations of the planned diamond drill holes relative to the important target areas isolated by the induced polarization survey. These anomalous targets are considered good indicators of a large tonnage open pit porphyry potential. The company will proceed with an aerial mapping, magnetometer and electromagnetic survey program. This will be followed with ground geophysics and trenching.