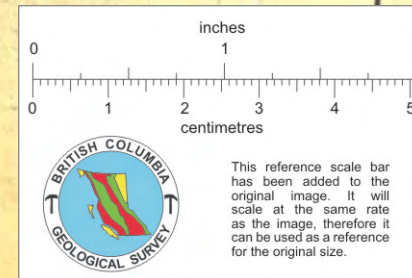
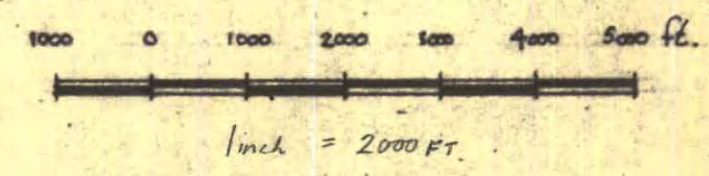
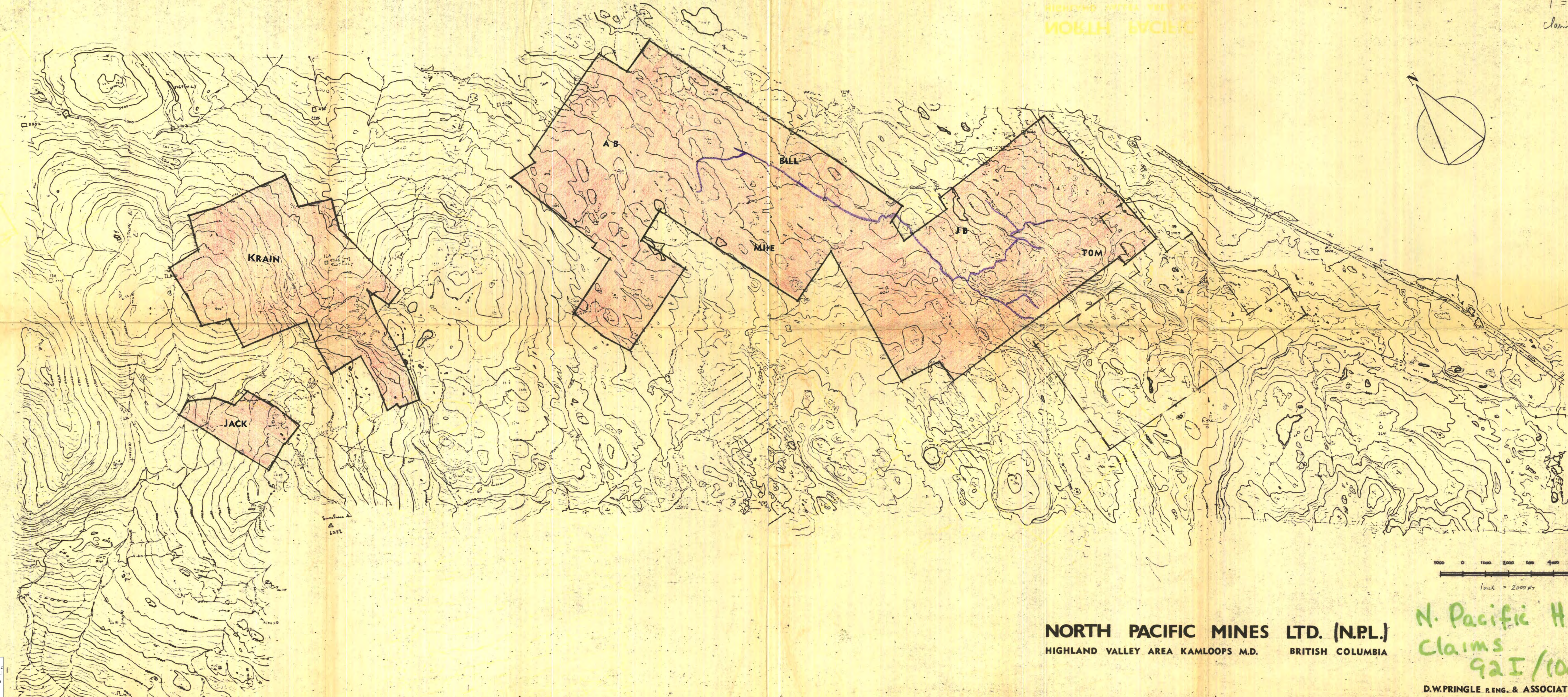


*N. Pacific (H.V.)*  
*1" = 2000'*  
*claim index map*  
*1968*

HIGHLAND VALLEY AREA  
NORTH PACIFIC



**NORTH PACIFIC MINES LTD. (N.P.L.)**  
HIGHLAND VALLEY AREA KAMLOOPS M.D. BRITISH COLUMBIA

*N. Pacific H.V.*  
*Claims*  
*92 I / 10d, 11a*

D.W. PRINGLE R. ENG. & ASSOCIATES  
JAN. 1969.