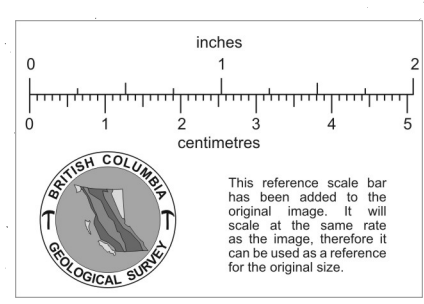


# GROUP PLAN OF MINERAL CLAIMS OF BETHLEHEM COPPER CORP'N LTD. HIGHLAND VALLEY, B. C. KAMLOOPS MINING DIVISION

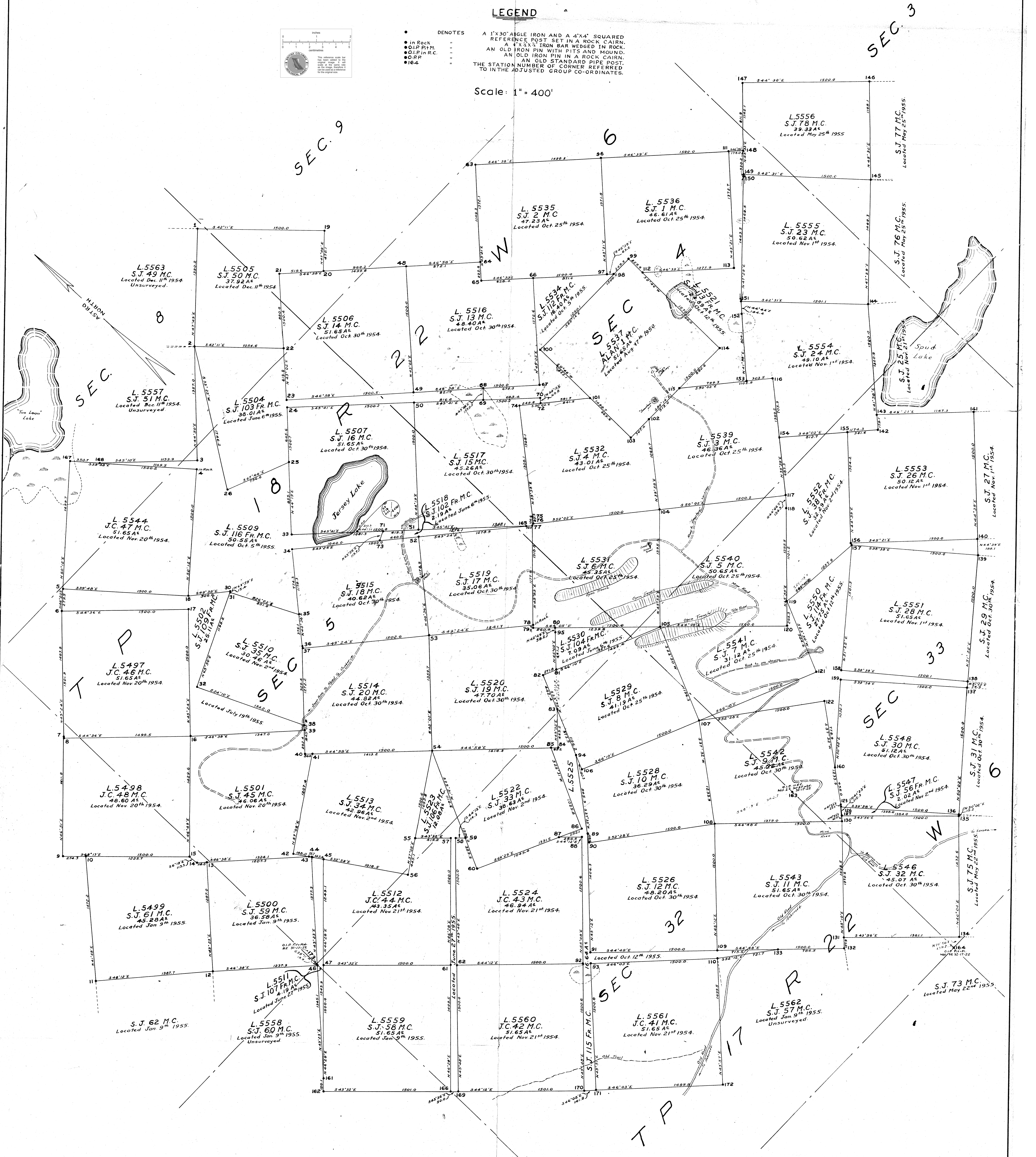
Bearings are Astronomic, derived from observations on "POLARIS";  
and referred to the South East corner of Section 32,  
Township 17, Range 22, West of the Sixth Meridian.

### LEGEND



• DENOTES  
 • in Rock  
 • O.I.P. in R.C.  
 • O.I.P. in R.C.  
 • 16.4  
 A 1"x30" ANGLE IRON AND A 4"x4" SQUARED REFERENCE POST SET IN A ROCK CAIRN.  
 A 1"x30" ANGLE IRON BAR WEDGED IN ROCK.  
 AN OLD IRON PIN WITH PITS AND MOUND.  
 AN OLD IRON PIN IN A ROCK CAIRN.  
 AN OLD STANDARD PIPE POST.  
 THE STATION NUMBER OF CORNER REFERRED TO IN THE ADJUSTED GROUP CO-ORDINATES.

Scale: 1" = 400'



ADJUSTED GROUP CO-ORDINATES														
Stn	Lat	Dep.	Stn	Lat	Dep.	Stn	Lat	Dep.	Stn	Lat	Dep.	Stn	Lat	Dep.
1	15,259.5	7,263.9	38	10,300.5	3,885.4	72	10,891.6	6,559.4	106	7,561.7	5,722.0	140	6,057.7	10,970.4
2	14,935.6	6,233.8	39	10,257.8	3,842.7	73	11,155.0	6,020.0	107	6,955.7	7,143.7	141	7,124.8	12,024.6
3	13,373.5	6,776.6	40	10,056.1	3,643.1	74	11,037.0	6,368.0	108	5,977.0	6,392.0	142	7,797.9	11,008.7
4	13,304.0	5,193.9	41	9,996.7	3,704.5	75	10,048.3	7,528.1	109	4,920.5	5,327.6	143	7,931.1	11,208.4
5	13,486.9	3,081.5	42	9,332.6	2,624.4	76	9,908.8	7,716.6	110	4,855.0	5,261.6	144	8,154.8	12,091.7
6	13,304.1	2,879.4	43	9,181.9	2,794.8	77	9,974.1	7,451.6	111	11,352.4	12,246.9	145	9,906.0	13,173.7
7	12,462.6	1,523.6	44	8,153.6	2,811.1	78	9,152.4	6,606.7	112	10,594.2	10,521.2	146	10,725.4	14,006.9
8	12,249.9	1,810.7	45	8,033.3	2,891.1	79	9,128.5	6,562.0	113	10,094.1	10,521.2	147	11,795.1	12,955.7
9	11,297.2	793.9	46	8,225.2	1,934.9	80	8,941.3	6,763.4	114	9,634.2	10,504.2	148	11,276.4	12,376.2
10	11,097.3	981.6	47	8,173.0	1,985.5	81	8,561.7	6,472.2	115	8,059.1	9,773.3	149	11,258.8	12,159.7
11	10,000.0	0.0	48	13,773.6	2,639.3	82	8,636.1	6,255.3	116	8,124.5	10,669.3	150	10,993.2	12,140.5
12	3,075.2	1,034.2	49	12,076.8	7,815.6	83	8,251.1	5,767.1	117	8,059.1	9,773.3	151	10,020.0	10,762.2
13	10,010.7	1,917.9	50	11,989.7	7,534.8	84	7,936.3	5,767.1	118	7,948.0	9,670.1	152	9,319.6	10,436.6
14	10,090.9	1,833.0	51	10,915.0	6,467.4	85	7,936.6	5,702.0	119	6,049.0	8,469.1	153	6,383.1	10,974.6
15	10,203.5	1,820.6	52	10,850.0	6,430.2	86	7,025.0	5,259.8	120	7,180.2	8,860.2	154	9,319.6	10,436.6
16	11,182.0	4,041.5	53	9,958.2	5,685.4	87	7,025.0	5,259.8	121	6,350.9	8,549.9	155	6,039.7	10,820.0
17	12,235.6	3,932.0	54	8,997.0	4,703.2	88	7,025.0	5,259.8	122	6,049.0	8,469.1	156	6,039.7	10,820.0
18	13,842.7	7,522.8	55	8,422.7	3,871.6	89	6,976.6	5,266.6	123	5,083.5	7,581.1	157	7,082.6	9,901.4
19	14,157.4	7,522.8	56	8,112.8	4,106.3	90	5,985.3	4,270.7	124	5,124.6	7,501.6	158	6,158.6	8,492.2
20	13,553.9	6,941.9	57	7,952.2	4,225.1	91	5,985.3	4,270.7	125	5,124.6	7,501.6	159	6,087.0	8,492.2
21	13,100.8	6,519.0	58	7,071.1	4,145.4	92	5,985.3	4,270.7	126	4,989.3	7,496.3	160	5,243.3	7,834.4
22	13,037.2	6,461.8	59	7,085.6	3,018.7	93	5,896.0	4,161.8	127	4,959.7	7,496.3	161	7,140.0	6,971.9
23	12,575.0	6,010.9	60	9,958.2	5,685.4	94	5,896.0	4,161.8	128	5,043.2	7,496.3	162	5,382.2	7,201.9
24	12,575.0	6,010.9	61	7,031.4	3,069.3	95	5,896.0	4,161.8	129	4,959.7	7,496.3	163	5,382.2	7,201.9
25	12,575.0	6,010.9	62	7,031.4	3,069.3	96	5,896.0	4,161.8	130	4,959.7	7,496.3	164	5,382.2	7,201.9
26	12,575.0	6,010.9	63	13,411.6	10,165.3	97	12,382.0	11,558.8	131	4,959.7	7,496.3	165	6,050.3	1,931.7
27	12,008.8	4,428.9	64	12,576.1	9,276.7	98	11,327.3	10,274.4	132	3,936.1	6,352.2	166	14,456.7	4,233.6
28	11,525.9	3,316.1	65	9,958.2	5,685.4	99	11,327.3	10,274.4	133	4,422.8	5,832.1	167	14,456.7	4,233.6
29	11,525.9	3,316.1	66	11,984.3	9,580.7	100	11,348.0	9,024.3	134	2,967.0	5,449.8	168	9,985.7	1,993.3
30	11,525.9	3,316.1	67	11,915.9	8,119.0	101	11,348.0	9,024.3	135	3,962.0	4,462.5	169	4,909.6	3,892.2
31	11,525.9	3,316.1	68	11,915.9	8,119.0	102	9,840.2	9,311.9	136	3,975.0	4,462.5	170	4,909.6	3,892.2
32	11,525.9	3,316.1	69	11,915.9	8,119.0	103	9,840.2	9,311.9	137	4,936.9	9,612.4	171	4,962.3	3,140.9
33	11,525.9	3,316.1	70	10,941.5	6,662.2	104	9,024.3	9,024.3	138	4,907.1	9,666.1	172	3,775.3	4,270.8
34	10,936.4	4,542.0	71	11,207.5	6,187.6	105	8,050.1	7,627.0	139	5,293.9	10,838.2	173	8,241.5	1,946.2

*Bethlehem*

B.C.L.S.