

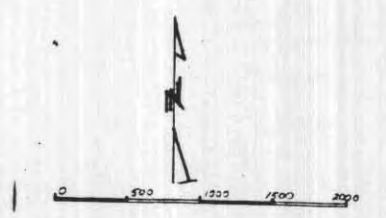
MINEX DEVELOPMENT LTD.  
PLAN OF MINERAL CLAIMS  
IN JACKO LAKE - PETERSON CREEK AREA  
KAMLOOPS MINING DIVISION

MAP 9219  
SCALE 1 INCH = 500 FEET

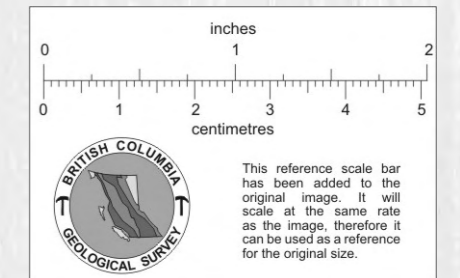
*Subject to Further  
Revision  
RH Jery Lin*

This Area Probably  
Claimed by JEOP Group  
(Parts NOT FOUND)

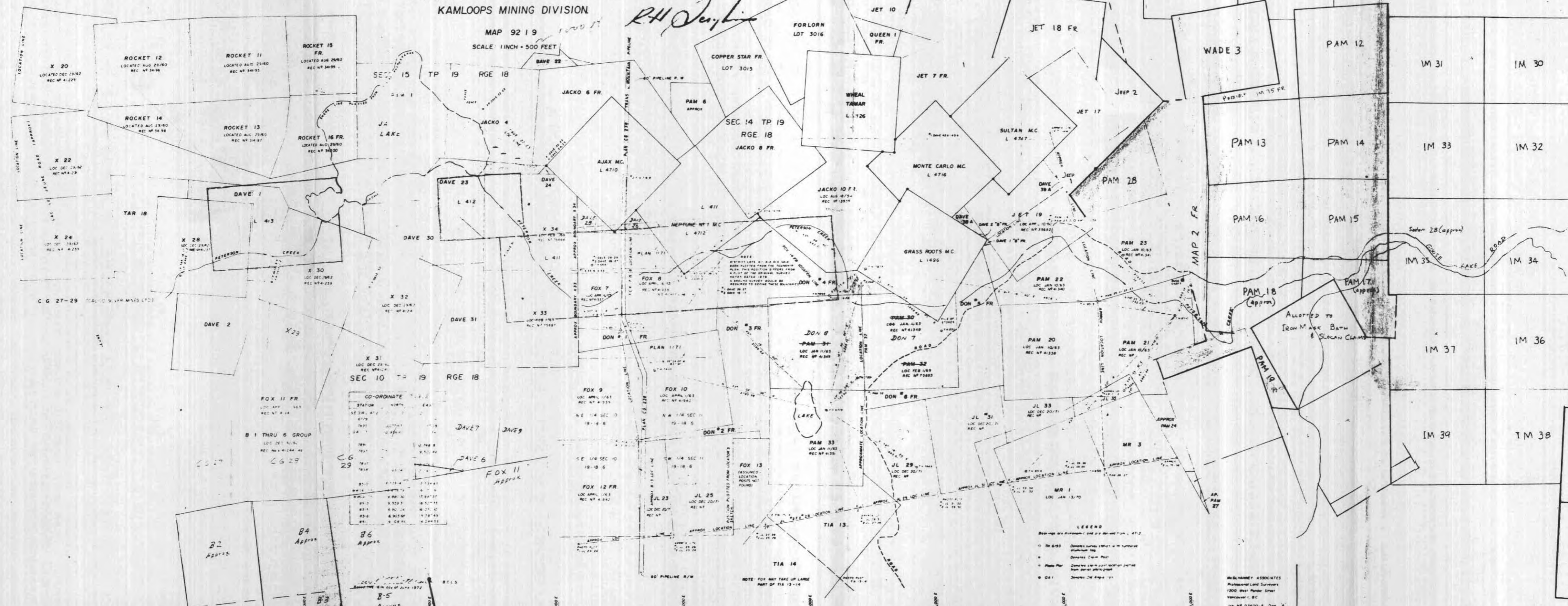
1" = 1000'  
11 72-079



Contiguous Area: 407  
+ Fox 4: 37.5  
+ B-31-33: 203.5  
**648 Acres ±**



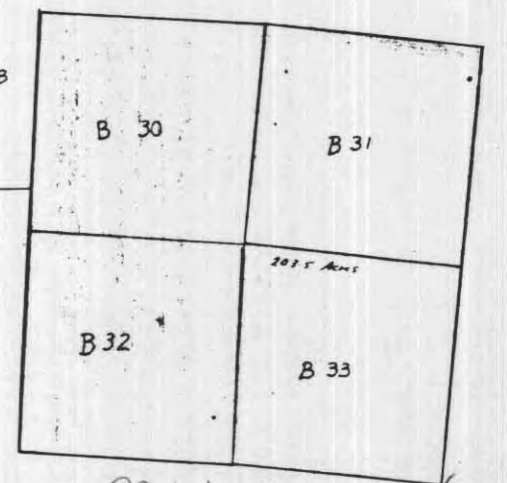
This reference scale bar has been added to the original image. It will scale at the same rate as the image, therefore it can be used as a reference for the original size.



CO-ORDINATE

STATION	NORTH	EAST
781	1712.4	1712.4
782	1712.4	1712.4
783	1712.4	1712.4
784	1712.4	1712.4
785	1712.4	1712.4
786	1712.4	1712.4
787	1712.4	1712.4
788	1712.4	1712.4
789	1712.4	1712.4
790	1712.4	1712.4

LEGEND  
Bearing and Distance  
Dashed Line  
Dotted Line  
Solid Line  
Dotted Line



- Mine Located Claims
  - Other Claims
  - Other Claims
- 92INE112 IM (9W)  
Riding Hills Sula '71 Group  
possible added claims