

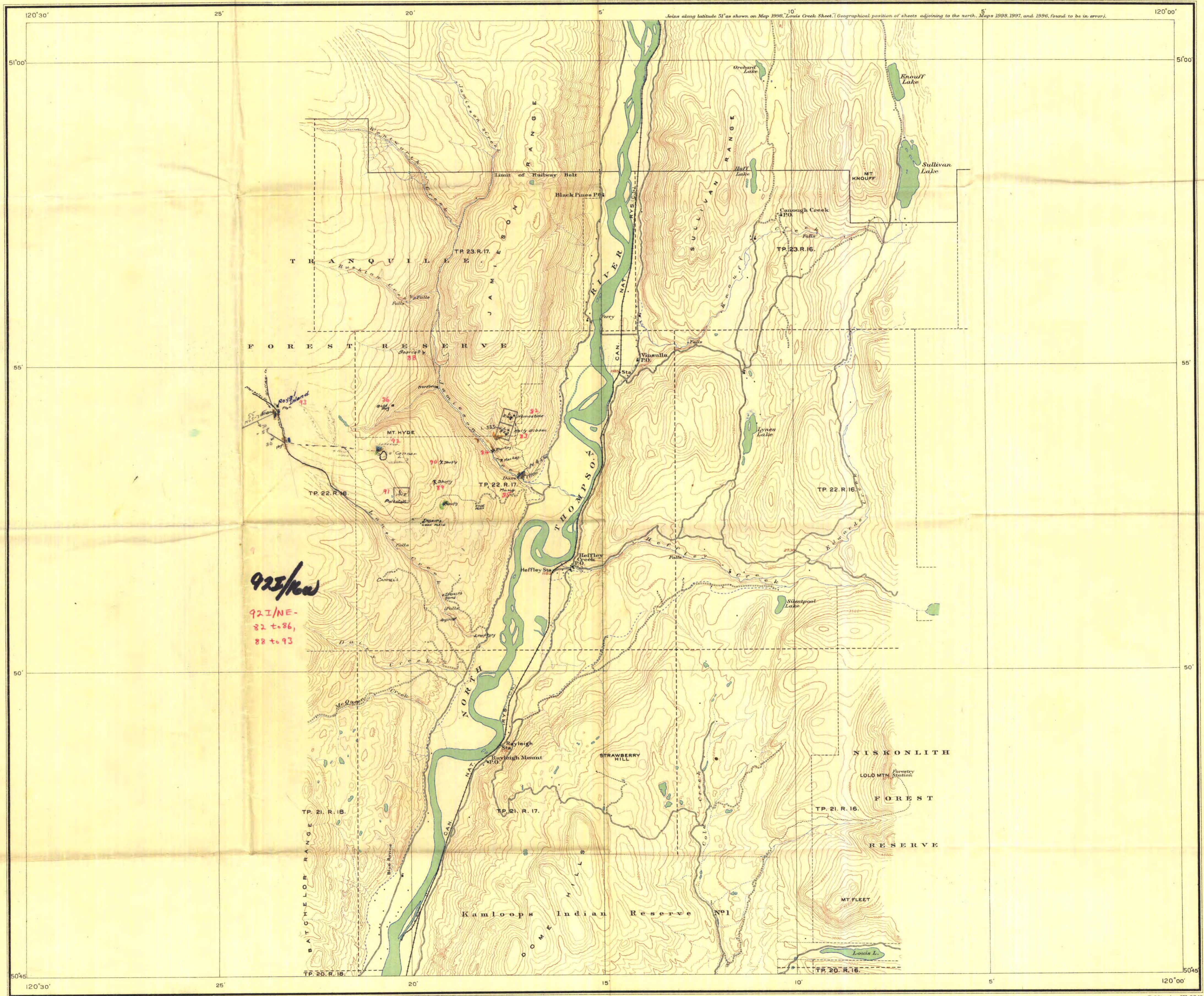
Canada
Department of Mines

HON. CHARLES STEWART, MINISTER, CHARLES CAMSELL, DEPUTY MINISTER.

GEOLOGICAL SURVEY

W. H. COLLINS, DIRECTOR.

Issued 1925

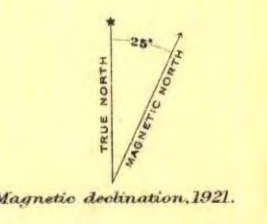


923/ha
92 I/NE-
82 to 86,
88 to 93

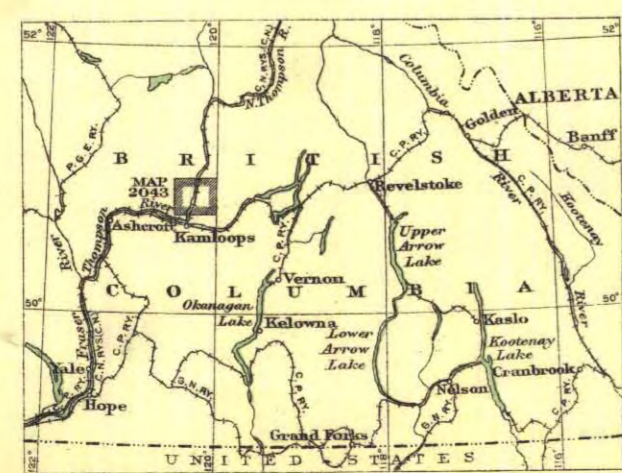
LEGEND

- Roads and buildings
- Road not well travelled
- Trail
- Railway
- School
- Post office
- Shaft
- Prospect
- Township boundary
- Forest Reserve boundary
- Indian Reserve boundary
- Intermittent stream
- Stream (position approximate)
- Irrigation ditch
- Intermittent lake
- Contours
- Contours (position approximate)
- Depression contour
- Height in feet

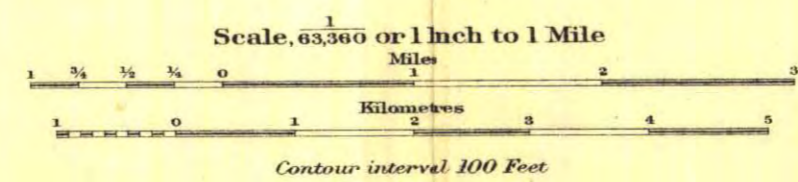
Geographical position based on astronomical stations at Kamloops.
Elevations referred to Mean sea level.



Publication No. 2043
Price, 10 cents.



HEFFLEY SHEET
(NORTH THOMPSON VALLEY)
KAMLOOPS DISTRICT
BRITISH COLUMBIA



TOPOGRAPHY
W.H. Boyd, Chief Topographical Engineer.
Surveys and topography by D.A. Nichols, 1921.

009932

