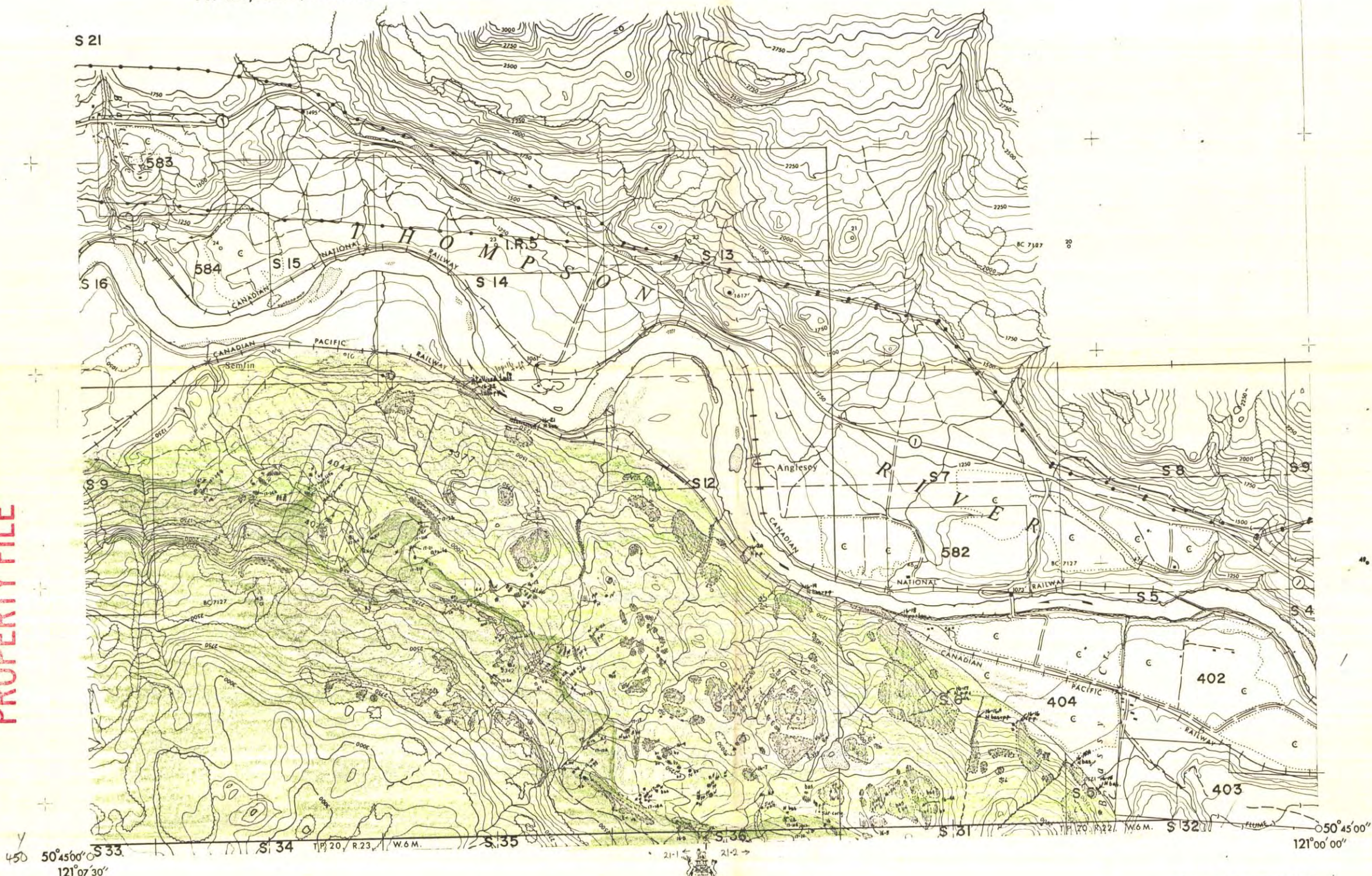


TP. 21, R.23, W.6M.

TP. 21, R.22, W.6M.

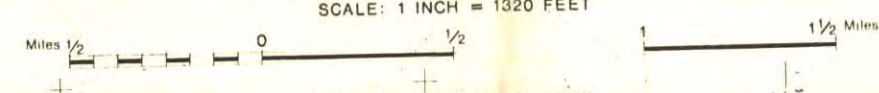
81000116b
PROPERTY FILE



Compiled by the TOPOGRAPHIC DIVISION,
SURVEYS & MAPPING BRANCH,
DEPT. OF LANDS, FORESTS & WATER RESOURCES,
Air photography: B.C. Gov't. 1965
Updated: B.C. Gov't. 1969
Field surveys: G. New B.C.L.S. 1969
Culture check: 1969

HIGHLAND VALLEY PROJECT
KAMLOOPS DIVISION OF YALE LAND DISTRICT
BRITISH COLUMBIA
SCALE: 1 INCH = 1920 FEET

Copies may be obtained from
SURVEYS & MAPPING BRANCH,
VICTORIA, B.C.



CONTOUR INTERVAL 50 FEET
Elevations in feet above Mean Sea Level
POLYCONIC PROJECTION
Origin 50°-121°

92 1/4 a
M260 (LOTS)
Negative No. 26347