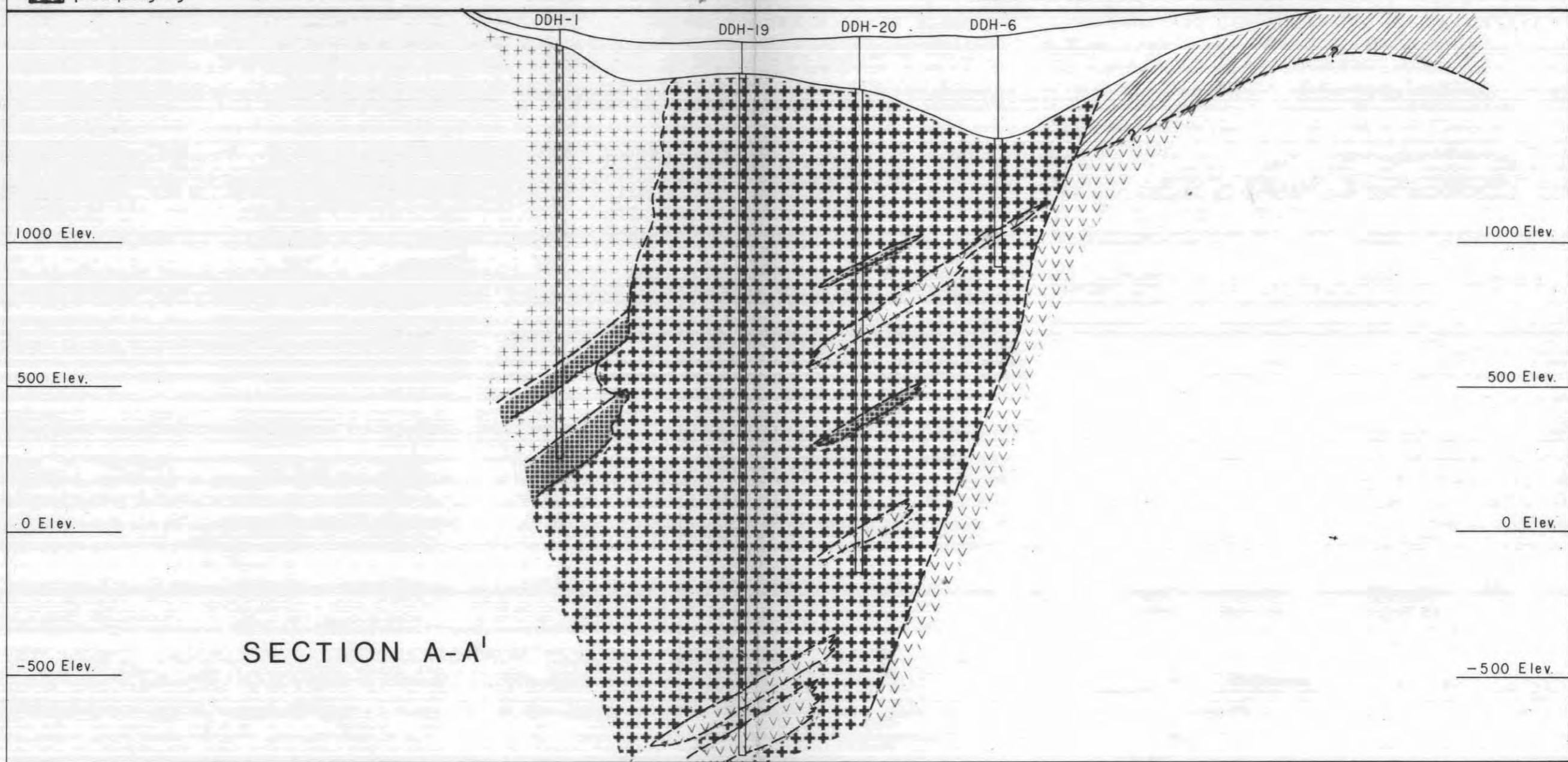
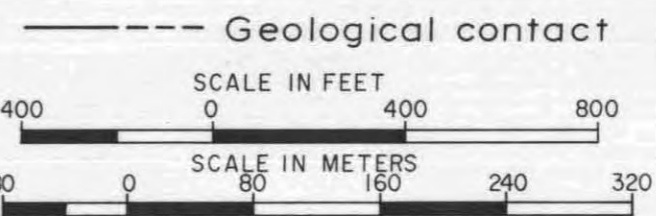


PLAN 1000' Elev.

- PLEISTOCENE & RECENT
 □ Till, alluvium
 TERTIARY
 ▣ Latite porphyry
 ▤ Biotite quartz monzonite porphyry

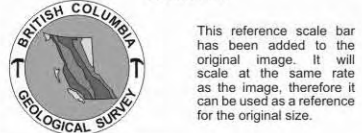
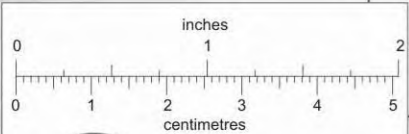
- Quartz diorite
 MESOZOIC ?
 ▥ Ultramafic intrusions
 PERMIAN
 ▦ Cache Creek Group
 ▧ Andesite, basalt

- ▨ Chert argillite



SECTION A-A'

SUBSURFACE GEOLOGY OF THE MAGGIE DEPOSIT



This reference scale bar has been added to the original image. It will scale at the same rate as the image, therefore it can be used as a reference for the original size.