



009486

WHEN REPLYING PLEASE REFER TO

FILE NO.

0356

MINERAL RESOURCES BRANCH
DEPARTMENT OF MINES AND PETROLEUM RESOURCES

101 - 2985 Airport Drive
Kamloops, B. C.

January 20, 1975

DEPT. OF MINES AND PETROLEUM RESOURCES	
Rec'd [unclear]	
ASB	
NCC	

Dr. N.C. Carter, P.Eng.
Senior Geologist
Mineral Resources Branch
Parliament Buildings
Victoria, B. C.

Dear Nick:

Re: Maggie Mine - Cache Creek
92I 11W

During my Bethlehem tour with Dave Miller, I saw maps, sections and core from the Maggie. Several pieces of the core will be submitted for thin sectioning.

The present known body open at depth is 183 meters wide and 1220 meters long, strikes NNW and dips 65 to 70° SW and has 47M average overburden.

The host rocks are mainly cherty and argillaceous Cache Creek (Perm/Penn) and a biotite-quartz-feldspar porphyry (62 x 10⁶ million years on the biotite). Interestingly, the body is at a small angle to the valley direction and the body with a pyrite halo actually lies from gossan to gossan which are evident on each side of the valley.

Reserves are 200 x 10⁶T of 0.4 Cu/MoS₂ and stripping ratios are 3 to 1.

Please see a diagrammatic sketch enclosed of one section through the body.

Peridotite increases in frequency to the northwest. Grade contours suggest a mushroom shape (anticlinal?) plunging to the southeast, with vertical axial plane.

Page 2

Minerals are py, cpy, mo with anhydrite. Values are on the crest and variably on the limbs of the mushroom shape without preference for either. The body has been subjected to faulting.

Peridotite and dacite occur as sills and peridotite as dikes.

The bedded formations and porphyry have been altered; arg/chert now have a quartz pebble appearance with a bio/ser matrix.

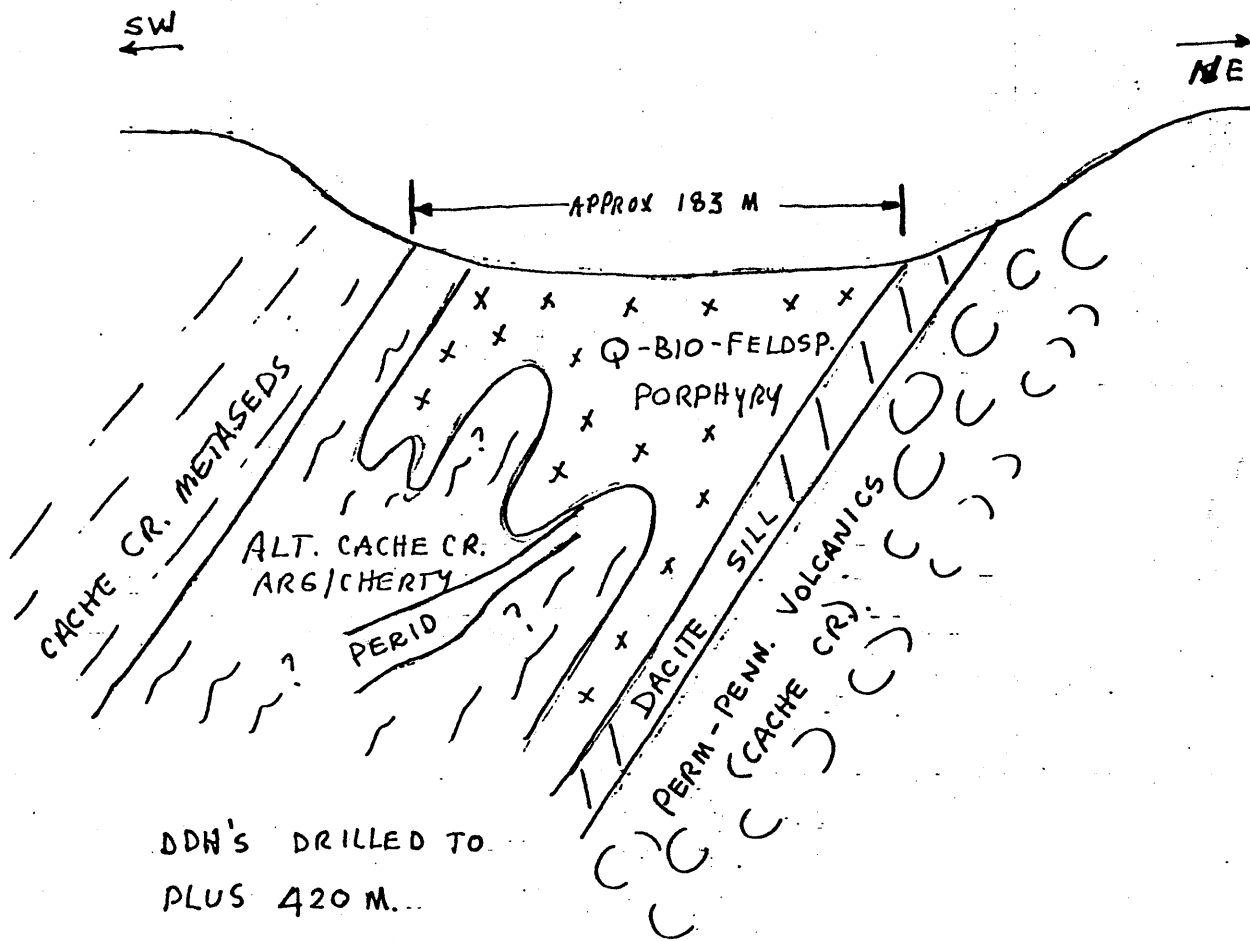
Yours truly,



Gordon P.E. White, P.Eng.
District Geologist

lc

MAGGIE BODY - DIAGRAMMATIC
VERTICAL SECTION
92 I 14 W.



NO SCALE
JANUARY 20, 1974
BCDM KAMLOOPS, B.C.

Gordon P.E. White