

PROPERTY FILE

009029

25 July 89

Giant Copper - CGU-1 (Trench G)

- Photo. 89-5-2, 3 - percussion drill + Trench G

Trench G - 54 metres altered + brecciated rock exposed.

- breccia - silicified + clay altered
- angular frags.

- tight folded siltstone + fld. porph. diorite, locally unbrecciated.

- tourmaline, cpy, py, sphal., arspy.

- degree of clay alteration is variable.

- # specimens: CGU-1

CGU-2 - Trench H

- deeply weathered breccia - intense sericitization of brecciated silicified breccia

- strong hornfelsing of some frags.

CGU-3 - old adit portal in hornfelsed seds. w hornfelsed dior. sill

- sill rock is very magnetic

- highly pyritic hornfelsed gste. + sst.

- abundant veins of cpy + tourmaline.

CGU-4 - AM Breccia

Photos: 89-5-4 to 8 incl.

- deeply weathered + Mn stained breccia with flashes of massive cpy + py.

- matrix contains much more chlorite than in previous.

Pat M. Andress, Brian Kjaoch, Ken Hicks,
Al Weston, Hannes von Steiger.

- vertical chlorite - tourm. stringers cutting up through bx in vicinity of contact.

Photo 89-5-9 - close-up - weathered AM breccia

- subrounded frags (weathering?)

- breccia located within extensive (several 100s metres) of intense hornfels.

- sed./sills considerably distorted in vicinity of AM breccia nose.

GCU-5 - Camp breccia

- coarse blocks of mafic intrusive & hornfelsed seds. - very little alt^h or mineral^z - chloritic matrix.

- intrusive qtz-feld. prop. diorite shows sign of alt^h & veining by tourm.

Photo: 89-5-10 - AM camp from #15 portal.

AM Breccia (cont'd) - 5000' to drill - just at 1000' today. 26 July 89

Photos: 89-5-11 + 89-6-1 - view of AM breccia from approach road (prominent hilltop in centre)

DDH GCS-88-1 - drill core

- badly broken core - limonitic weathering & Mn fract. coating pervasive to depth of 165'

- hole starts in heavily hornfelsed wall rock - ss, sat, prop. diorite - fract coatings & patches of tourmaline also quite ubiquitous.

- contact with breccia @ 90' - sharp change from massive hornfels to breccia over interval of about 1'

- contact displays discontinuous shearing with schistose material later silicified.

- bx - matrix mainly chlorite / sericite / silica with fragments harder and more silicified.

- brecciation not uniform - locally strong disruption with angular frags. of differing lithology ranging to shattered zones with little movement of frags.

Scintillometer test: - T2 channel: - spot highs up to 2X background but mostly - no response (background: 50cpm)

→ Sulphides: - py, epy (minor po, arspy, moly)
- no convincing examples of multi-brecciations
- frags. relatively unaltered except for occasional silicifications

Scintillometer test on Trench B - #10 Anomaly zone.
- no measurable response[†] above background.

u/g - portal #10

- banded chert & cherty sst., weakly to moderately hornfelsed with numerous wide mafic sills:
 - banded chert (Spec) + Photo. 89-6-2
 - coarse w/m. sill - (Spec)
 - intrusive - sheared + clay - altered - bad ground
 - AM breccia - deeply limonite weathered + abundant sulph.
- Photo. 89-6-3, 4, 5, 6, 7

GSC Admin. 666-0529

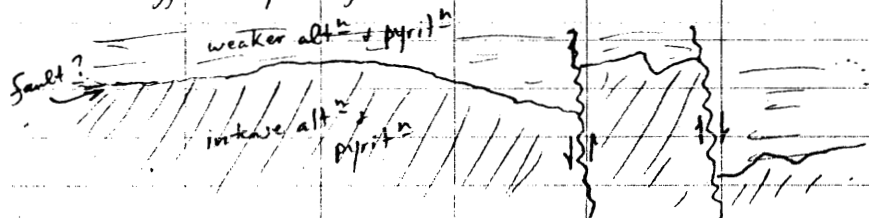
27 July 89

Murray Journey: Penlton Helicopters
(604) 894-6919.

- Duffy Lake Rd. - 21 km south of intersect. A frame for sale.

Keiko - main road showing - (Photo.: 89-6-8 + 89-5-12)

- subhorizontal surface (fault?) causes abrupt decrease in degree of silicif. + pyrit^z.
- off set by two faults.



Doctors Point - (Photos: 89-5-13, 14, 15 + 89-6-9, 10, 11, 12)

- main road showing.
- extensive trenching + stripping along road.

Metals Research - P.L. 9790

(Photos. 89-5-16 + 89-6-13)

Robert + Tony Papalia, George Peden.

- 104 placer leases strung out along Lillooet R. + Sloquet Cr. + Fire Creek + Tipella Creek delta
- most testing done on Lillooet R. delta
- all leases tested with trenches + pits
- drill testing mainly on delta + Sloquet Creek leases
- mining operation on P.L. 9790 will ~~produce~~ 10,000 tons/day mine
- working since 1965 - Papalia's after 1975.
- will produce Au, magnetite, Zr, Pt, Rd + other R.C.'s.

Vananda Gold - Charlie Forster (phone)

28 July 89

89-8 to 89-26 : 14,500' - Little Billie, Coraell, Copper Queen

- mapping, geophysics, geochemistry, Sandy grids.
- I.P. didn't pan out - mag., VLF.