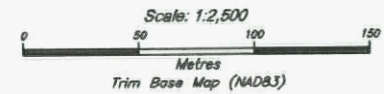
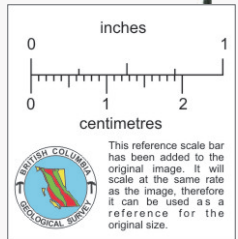


PROPERTY FILE

SYMBOLS

- CR01-23 2001 Drill Hole
- CR02-40(75) 2002 Proposed Drill Hole(Depth,metres)

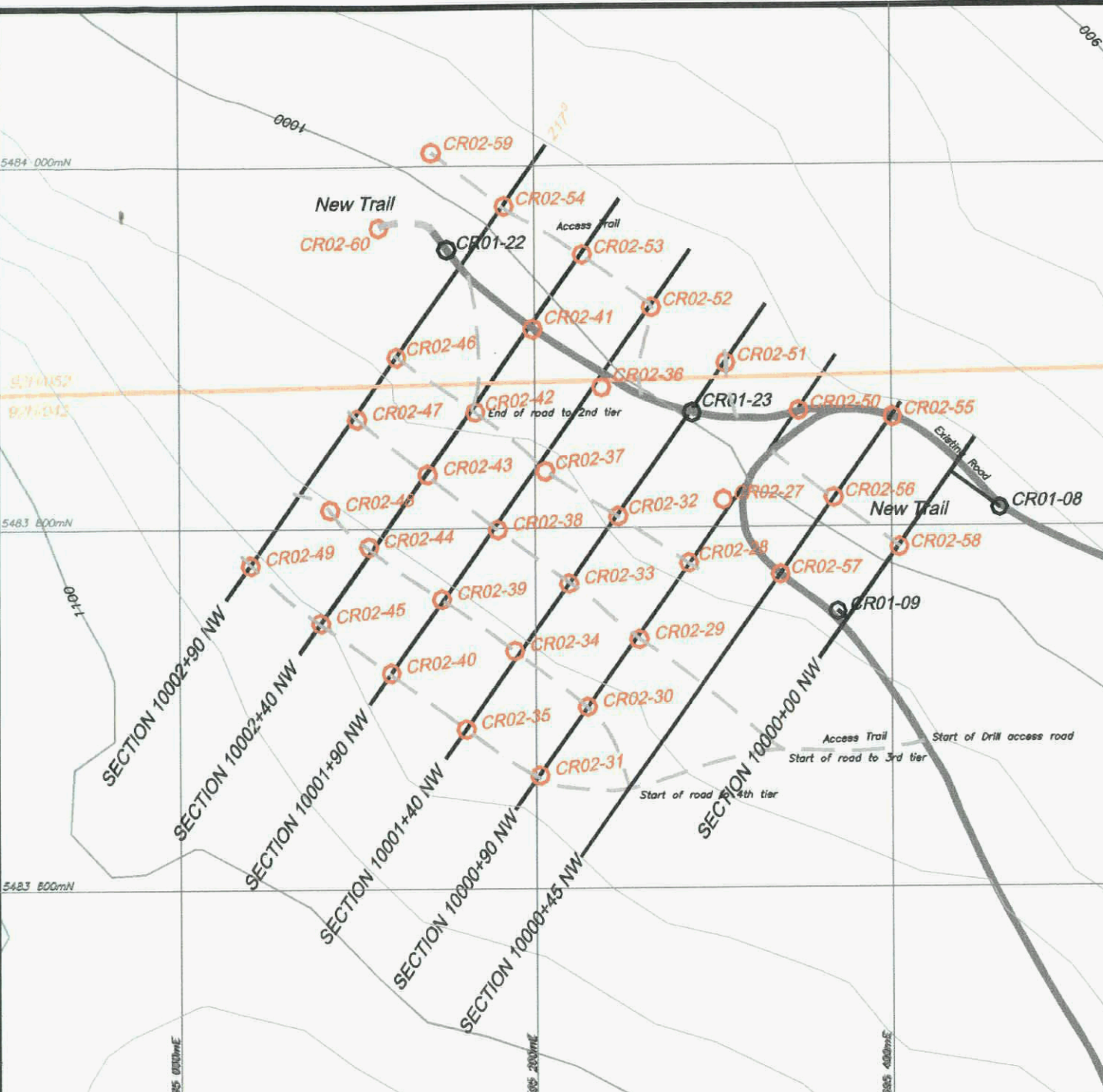
2002 Exploration Access



Leader Mining International Inc.
Project No.:345 New Westminster Mining Division

COGBURN PROJECT
Emery Zone

2002 DRILL PLAN



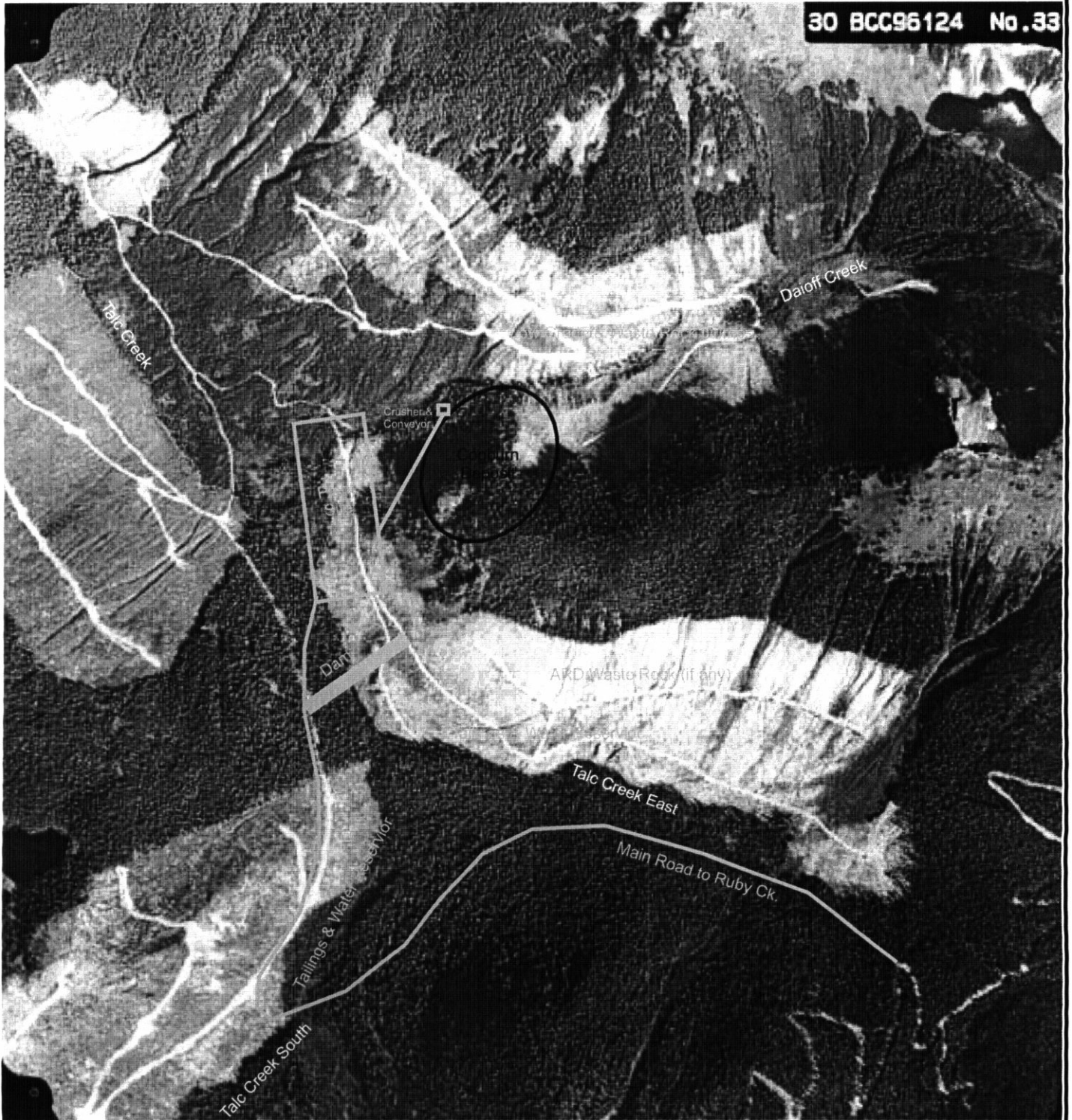
Leader Mining International Inc.
Cogburn Magnesium Project
Emory Zone Core Drilling Results - 50m Centers

J.A.C.

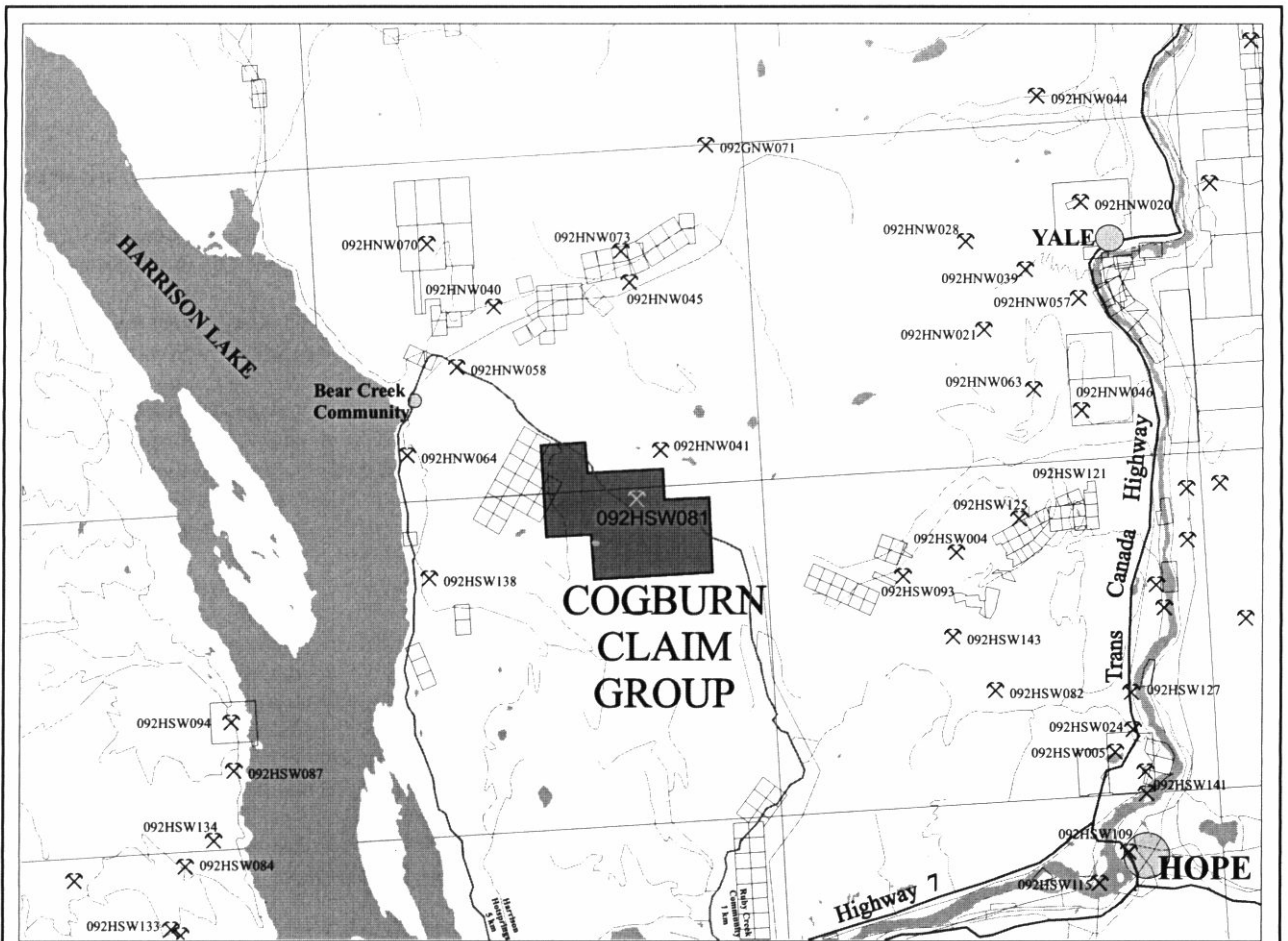
DRILL HOLE NO.	OVERBURDEN (m)	LENGTH (m in rock)	Length x Grade													
			Mg (%)	Fe (%)	Ca (%)	TOT/S (%)	B (ppm)	Ni (ppm)	LOI (%)	Mg	Fe	Ca	TOT/S	B	Ni	LOI
Emory Zone Drilling November 2001																
CR01-08	6.10	144.47	26.10	5.04	0.12	1.52	10	2110	4.2	3770.78	728.49	17.63	218.97	1404	304886	601.02
CR01-09	1.20	45.43	26.10	5.05	0.15	1.11	12	1940	4.9	1185.67	229.45	6.93	50.28	526	88155	220.49
CR01-22	3.05	47.55	25.45	4.70	0.44	0.07	5	1847	8.0	1210.05	223.53	20.81	3.39	247	87828	379.95
CR01-23	4.57	46.03	24.91	5.37	0.06	1.88	12	2178	6.9	1146.52	246.99	2.98	86.37	533	100237	319.55
Emory Zone Drilling May & June 2002																
CR02-27	2.44	47.85	25.16	6.28	0.24	0.57	11	2145	6.7	1203.95	300.54	11.27	27.07	528	102628	318.85
CR02-28	0.61	49.99	25.35	5.90	0.25	0.52	16	2049	6.9	1267.22	294.88	12.55	25.95	796	102417	344.24
CR02-29	6.70	46.94	25.26	6.08	0.20	0.23	16	2193	6.2	1185.87	285.25	9.19	10.85	735	102954	293.06
CR02-30	1.52	61.27	26.21	5.73	0.07	0.49	26	2463	7.1	1605.77	350.84	4.59	30.04	1615	150911	438.07
CR02-31	3.05	71.93	22.17	6.41	0.05	1.66	46	2181	7.7	1594.52	461.23	3.92	119.55	3287	156909	552.03
CR02-32	1.52	49.08	24.32	6.33	0.18	0.45	20	1996	8.5	1193.86	310.86	8.72	22.00	1004	97961	417.27
CR02-33	1.52	49.08	25.86	5.98	0.19	0.24	20	2333	7.1	1268.97	293.40	9.57	11.68	994	114485	347.27
CR02-34	1.52	55.17	25.68	5.75	0.15	0.23	17	2095	7.9	1416.52	317.22	8.05	12.42	945	115582	435.34
CR02-35	3.35	71.63	22.87	5.49	0.30	0.75	15	1777	11.6	1638.08	393.14	21.37	53.57	1048	127317	830.17
CR02-36	2.30	47.99	24.89	5.99	0.30	0.26	7	2051	7.6	1194.24	287.26	14.48	12.51	359	98445	363.81
CR02-37	2.13	48.47	26.23	5.40	0.49	0.09	8	2088	6.8	1271.33	261.90	23.58	4.34	382	101206	330.51
CR02-38	2.13	48.16	26.04	6.02	0.17	0.13	14	2367	5.9	1254.19	290.01	8.21	6.36	669	113977	282.08
CR02-39	2.13	57.61	25.13	5.55	0.34	0.11	12	2076	9.0	1447.47	319.66	19.50	6.28	705	119607	519.99
CR02-40	3.05	47.95	20.23	5.44	0.47	1.14	4	1312	17.1	969.93	261.00	22.30	54.45	210	62895	820.63
CR02-41	2.44	47.85	24.79	5.90	0.49	0.10	6	1911	8.0	1185.97	282.38	23.33	4.63	309	91446	383.67
CR02-42	1.52	49.08	24.86	5.58	0.72	0.08	10	2087	7.7	1220.33	274.06	35.58	4.05	475	102408	378.03
CR02-43	2.13	48.47	23.15	5.49	0.27	0.68	9	2087	12.4	1122.23	266.10	12.85	33.04	422	101133	601.17
CR02-44	4.88	54.86	22.76	5.46	0.26	0.39	10	2000	13.5	1248.67	299.50	14.25	21.18	533	109729	739.33
CR02-45	1.52	79.25	24.26	5.40	0.53	0.53	7	1917	12.4	1922.50	428.32	42.24	42.23	583	151890	985.87
CR02-46	2.13	48.47	23.55	5.45	0.85	0.18	9	1886	11.2	1141.55	263.99	41.32	8.79	442	91398	541.98
CR02-47	2.13	48.47	24.66	5.53	0.40	0.09	14	2168	9.4	1195.09	267.86	19.46	4.28	669	105088	455.38
CR02-48	1.52	34.75	21.39	5.26	0.29	0.27	4	1912	13.6	743.44	182.89	9.91	9.22	151	66427	474.24
CR02-49	1.52	79.25	22.27	5.75	0.44	0.36	5	1514	13.5	1765.04	455.37	34.55	28.27	394	120001	1069.00
CR02-50	1.22	49.38	25.34	5.73	0.48	0.91	15	2274	6.4	1251.18	282.77	23.92	45.14	727	112266	314.77
CR02-51	1.83	48.77	25.07	6.32	0.15	0.25	12	2573	7.6	1222.51	308.04	7.46	12.26	561	125470	370.46
CR02-52	0.61	49.68	23.75	6.01	0.83	0.14	12	2270	7.8	1179.70	298.47	41.11	7.14	619	112770	389.21
CR02-53	0.61	49.99	24.31	5.71	0.59	0.07	12	2365	8.8	1215.50	285.54	29.33	3.69	601	118205	439.24
CR02-54	0.61	49.99	22.10	5.75	1.51	0.05	8	2317	8.8	1104.71	287.64	75.59	2.66	409	115836	442.32
CR02-55	1.83	48.77	26.16	5.82	0.29	0.79	8	2614	3.4	1276.00	283.74	13.90	38.65	390	127471	164.14
CR02-56	0.61	49.99	24.76	5.53	0.24	0.54	7	2170	6.6	1237.75	276.28	12.23	26.76	349	108457	331.46
CR02-57	1.83	48.77	26.19	6.11	0.10	0.78	14	2413	5.6	1277.27	297.88	4.87	38.26	692	117675	275.36
CR02-58	1.83	48.77	26.76	6.05	0.29	1.12	9	2198	4.3	1305.04	294.97	14.36	54.52	437	107187	212.12
CR02-59	1.83	48.77	24.25	5.79	0.50	0.05	13	2300	8.6	1182.48	282.37	24.48	2.67	655	112149	420.60
CR02-60	1.15	49.45	25.40	5.58	0.71	0.02	13	2272	6.1	1256.15	276.17	35.14	1.08	664	112367	299.98
Averages		2069.38	24.59	5.68	0.36	0.55	13	2106	8.26	50878.05	11749.99	741.52	1144.58	26070	4357773	17102.65

Cogburn Project

30 BCC96124 No.33



Preliminary Site Development Plan



COGBURN CLAIM GROUP

New Westminster Mining Division
British Columbia, Canada

NTS:
092H05E, 09H12E

Location Map

Figure 1

Source : The Map Place
Drawn By: DKM, P.Eng.
Date: May 30, 2000