

008567

92 H/15E

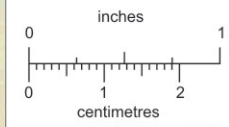
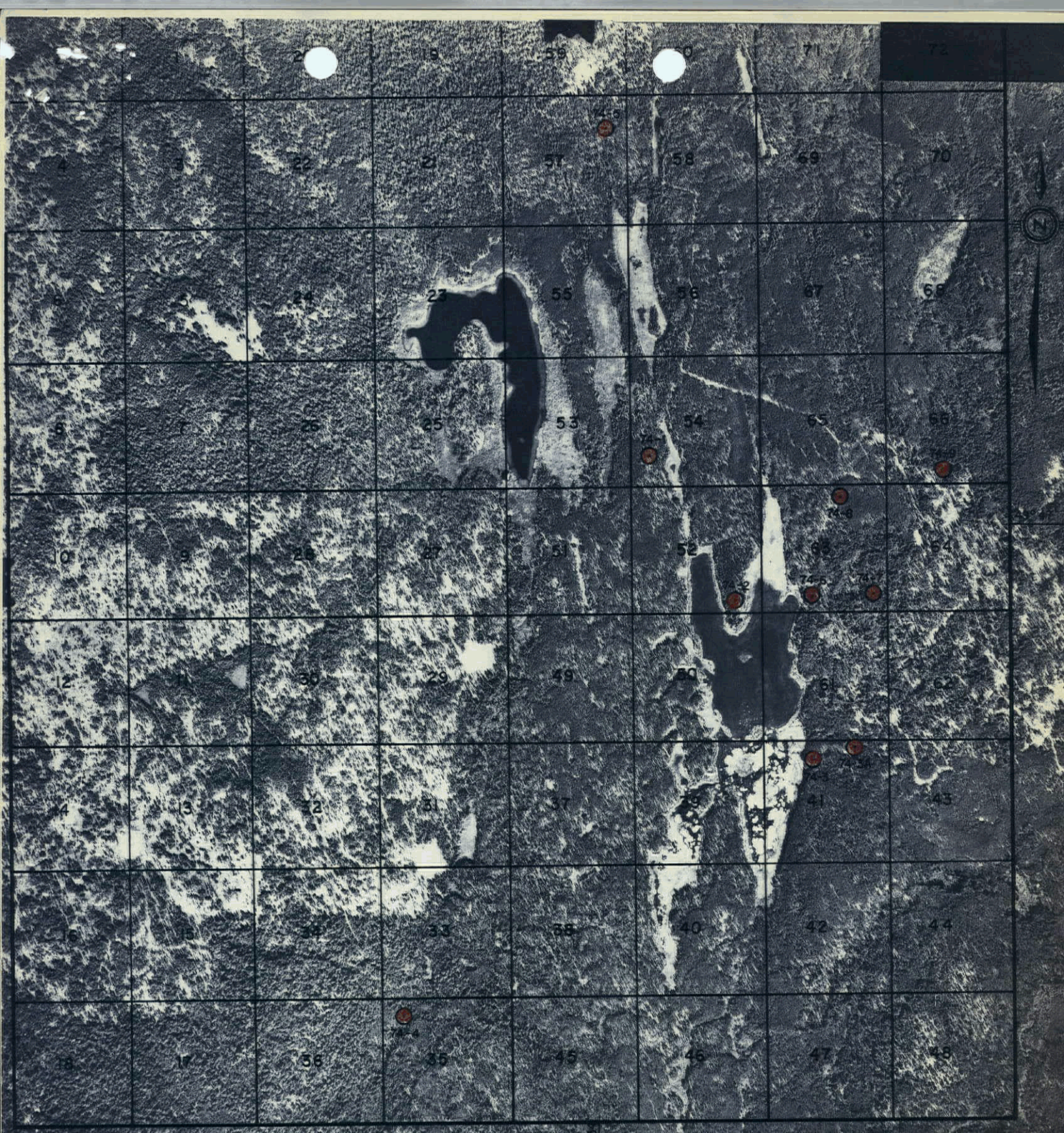
"LOG"

NO MI ?

-submitted with 1974 Expl. Form

General Geology

The property is mainly underlain by Nicola volcanics and sediments of Upper Triassic age. Drilling has revealed that a portion of the claims near the east central side are underlain by an intermediate acid plug. Known outcroppings of Jurassic coast intrusives occur near the south-west border of the claim block. Glacial drift covers the lowland areas and Tertiary flows apparently overlie much of the Nicola rocks in the valley.



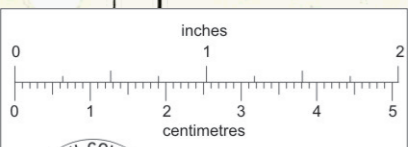
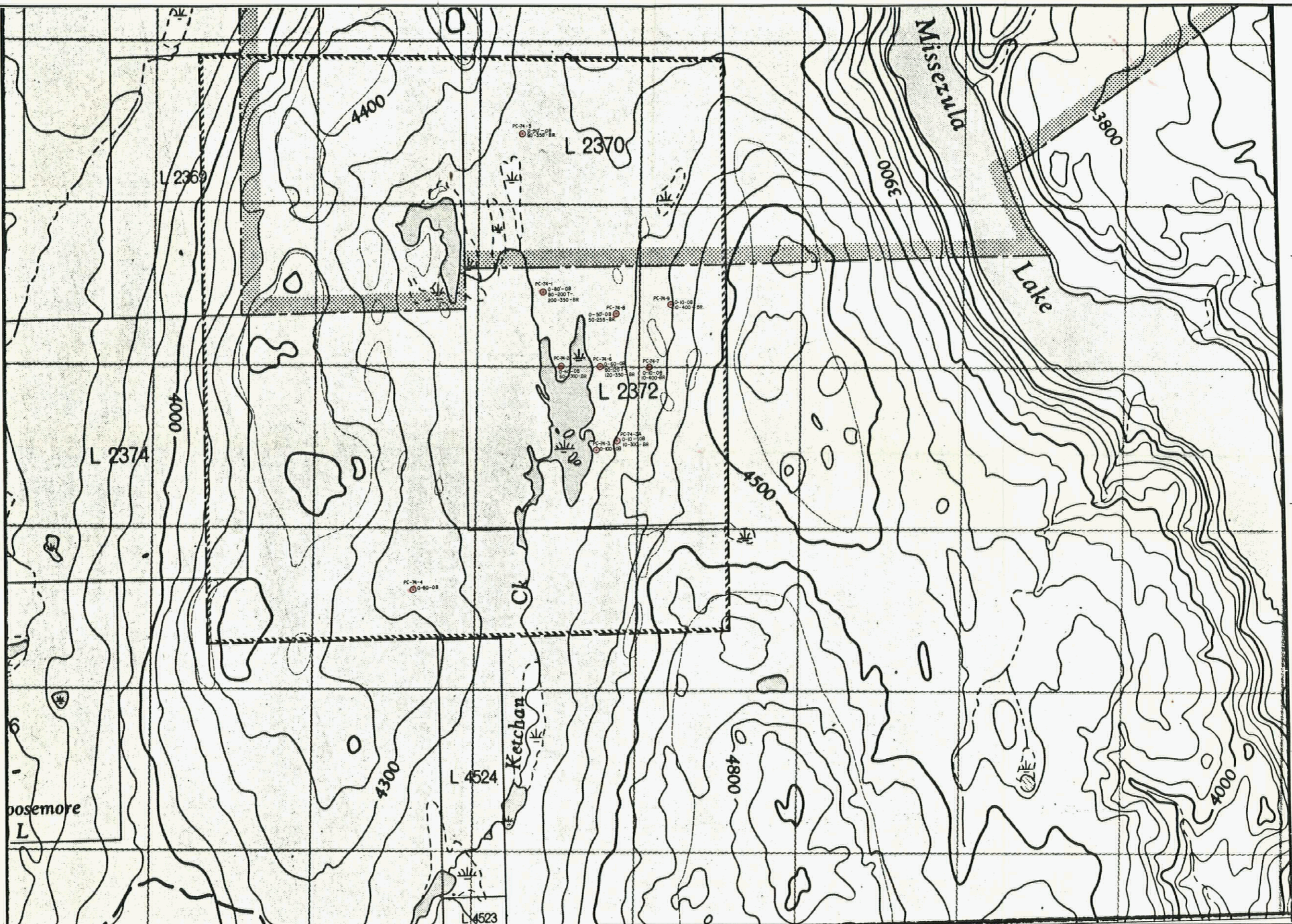
This reference scale bar has been added to the original image. It will scale at the same rate as the image, therefore it can be used as a reference for the original size.

AIR PHOTO No. — BC 7100-181  
 DATE OF PHOTOGRAPHY — 1969  
 SCALE: 20 chains or 1" = 1320' Approx.

(4-1)  
 ● Percussion Drill Hole

COPPER BELT PROJECT  
 (MISSEZULA LAKE)  
 "LOG" GROUP  
 LOCATION PLAN

FIG. 2



This reference scale bar has been added to the original image. It will scale at the same rate as the image, therefore it can be used as a reference for the original size.

**LEGEND**  
 PC-74-1 Percussion Drill Hole  
 (OB) - Overburden  
 (T) - Tertiary  
 (BR) - Bedrock

**JURASSIC OR LATER**  
 Coast Intrusions - Granite, Granodiorite, Quartz diorite

**UPPER TRIASSIC**  
 Nicola Group - Volcanics, Argillite, Tuffs  
 SCALE IN FEET  
 1000 0 1000 2000

DATE REVISED	BY	DEPT. - EXPLORATION
		DRAWN BY -
		CHECKED - R. J. N.
		APPROVED -
		DATE - NOV. 1974
		SCALE - 1" = 1000'

**Bethlehem Copper**  
 VANCOUVER BRITISH COLUMBIA

TITLE - MISSEZULA LAKE PROJECT DRILL HOLE PLAN	
FILE NUMBER -	DRAWING NUMBER -
	FIG. 5

DRAWING NO. 10111