

PHELPS DODGE CORP. OF CANADA

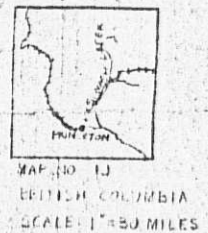
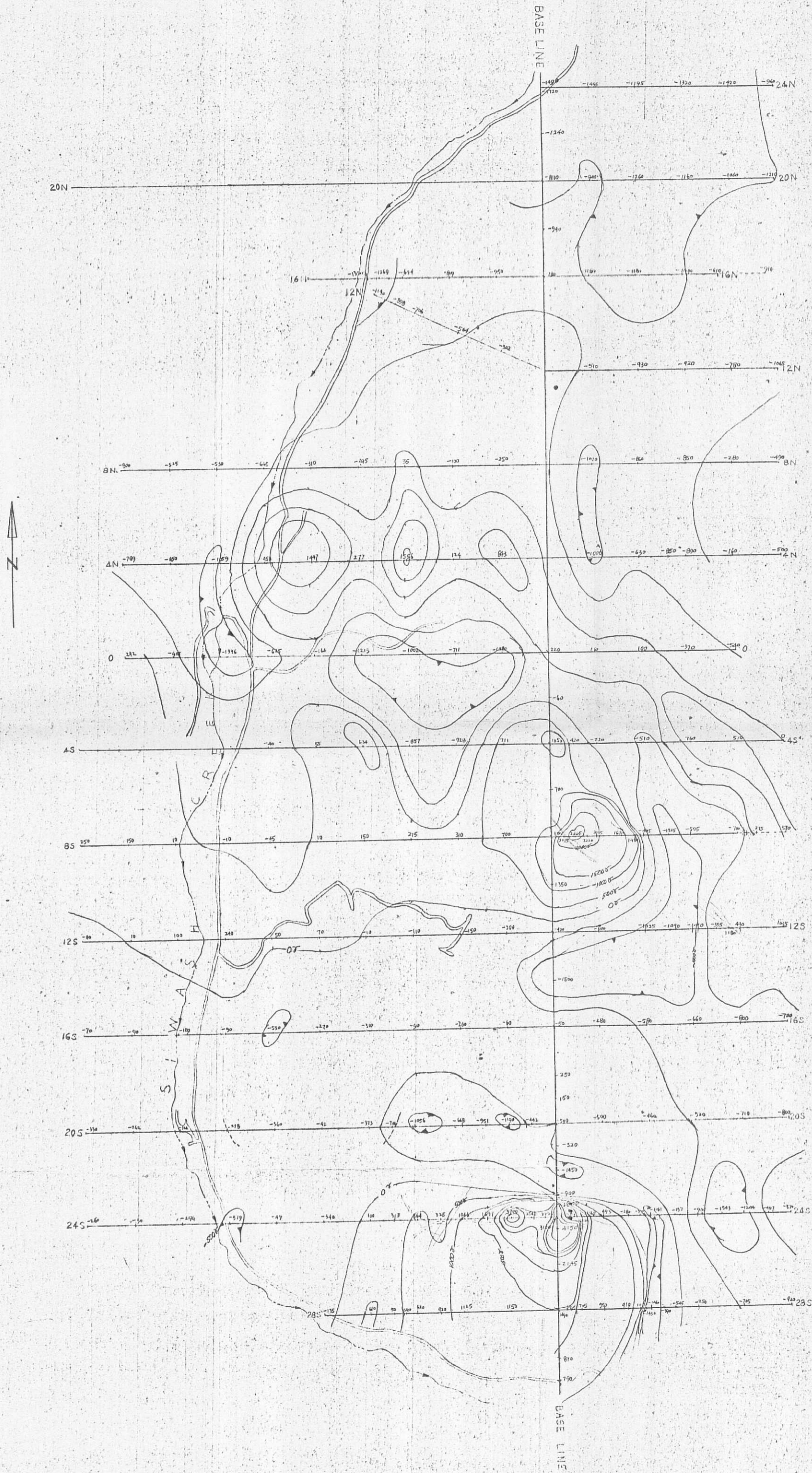
VANCOUVER OFFICE

MAGNETOMETER SURVEY

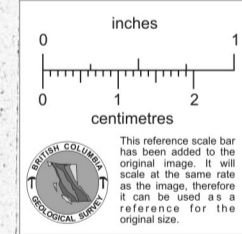
DON AGUR GROUP

PRINCETON AREA

JULY, 1972



MAP 10 13
BRITISH COLUMBIA
SCALE: 1" = 50 MILES



SCALE: 1" = 200 FEET