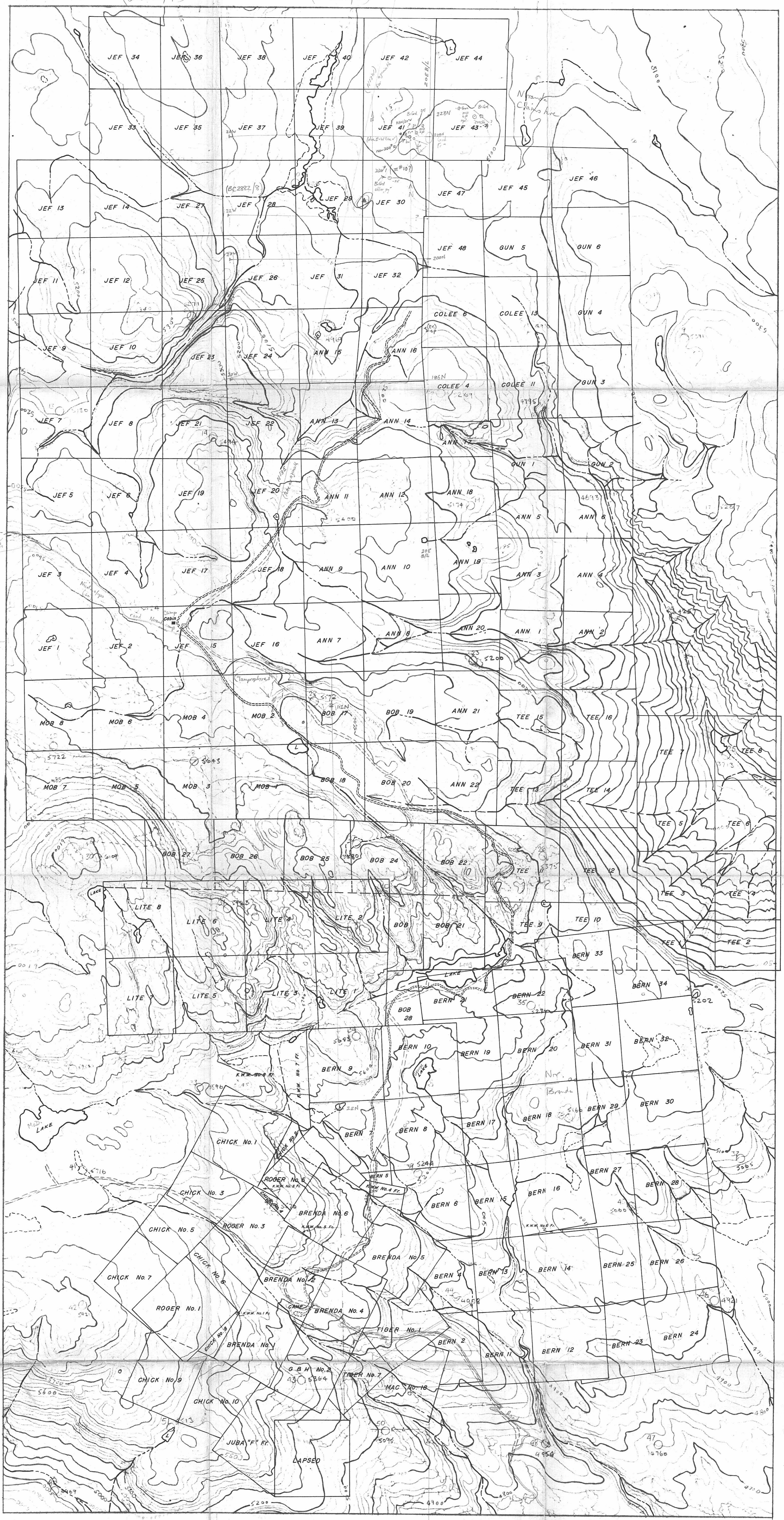


Lake (in) (BC2882/9) Lake (in) (BC2882/8)



Reduce this

to this

### CLAIM MAP of BRENDA AREA 1" = 1000'

- Ground held by BRENDA MINES LIMITED. (Surveyed claims)
- Ground held by NORANDA EXPLORATION COMPANY, LIMITED. (Claims not surveyed)

Location of road approximate.

For reduction

(Roads taken from similar maps given to Ed. Hughes, Sept '66)  
Confidential.

NORANDA EXPLORATION CO LTD

PENNASK

PRIMARY RECONNAISSANCE TYPING

MICHAEL J. R. SURVEYS LIMITED

200 West Beaver St.	Vancouver, B.C.
SCALE: 1" = 1000'	DATE: MAY 1965
SHEET NO: 6540	

SCALE AND ELEVATION DATUM BASED ON L.M.F.E. BEING CONTROL RESULTS IN 1955 RELATIVE, BUT INVENTAN. ABSOLUTE MAY BE DIFFERENT. COMPILED FROM AERIAL PHOTOGRAPHY AT AN APPROXIMATE SCALE OF 1" = 4000'.

