

HIP 1-12

92 H/15E (92/17W, 92/17W)

(also MX 1-6, HC "0" Fr.)

NICOLA MINING DIVISION

owned: Bethlehem Copper Corporation

forfeited: July 2/75

(Aug. 13/75, Aug. 22/75)

008383

mx 1-6

9217w (9217w, 92415E)

(also HC "0" Fr., HIP1-12)

NICOLA MINING DIVISION

owned: Bethlehem Copper Corporation

forfeited: Aug. 13/75 (Aug. 22/75, July 2/75).

HC "G" Fr.

9217W (92H15E, 9217W)

(also HIP 1-12, MX 1-6).

NICOLA MINING DIVISION

owned: Bethlehem Copper Corporation

forfeited: Aug. 22/75 (July 2/75, Aug. 13/75).

October 10, 1975

Bethlehem Copper Corporation
Suite 2100 Guinness Tower
1055 W. Hastings St.
Vancouver, B.C.
V6E 2H8

Dear Sirs:

Re: HIP 1-12, MX 1-6, HC "O" Fr. mineral
claims - Nicola Mining Division;
SKU 1-3, S 1 Fr., R 61, 62 mineral
claims - Kamloops Mining Division;
Day 74, "O" Fr. mineral claims -
Omineca Mining Division; Banner 31,
32, 34, 39-43, 45, 47, 61-80 mineral
claims - Clinton Mining Division

Thank you for your letter of October 7, 1975, and
the information submitted pursuant to Section 52 of the
Mineral Act with respect to the above noted mineral claims.

Enclosed please find duplicate copies as requested.

Yours very truly,

R. Rutherford
Deputy Chief Gold Commissioner

bmh

BETHLEHEM COPPER CORPORATION

Suite 2100 Guinness Tower, 1055 West Hastings Street, Vancouver, B.C. V6E 2H8

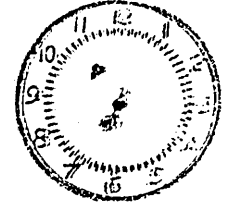
Telephone 682-5211

Telex 04-507589

11236

OCT 9 '75 AM

October 7, 1975



DEPT. OF MINES
AND PETROLEUM RESOURCES

Mineral Resources Branch
Department of Mines and Petroleum Resources
Parliament Buildings
Victoria, B.C.
V8V 1X4

Dear Sirs:

Re: Forfeiture of Mineral Claims
- 3rd Quarter 1975

We hereby submit in duplicate nine (9) Notices of Forfeiture listing those mineral claims owned by Bethlehem Copper Corporation that expired during the third quarter of 1975.

Kindly return a stamped copy as acknowledgement of receipt of the aforementioned notices.

REFERRED TO	DATE	INITIAL
D.M.		
ADM (M)		
ADM (O)		
ADM (P)		
C.G.C.		
EA G.S.R.	10/10	EA
Enclos		
G.C.		
ACCTS.		
GECL.		S. Bennett
INSP.		
M. REV.		
M. DEV		
BH		✓
FILE NO.		
FILING CLERK		

Yours very truly,

BETHLEHEM COPPER CORPORATION

Per: E. Andersen
Property Agent

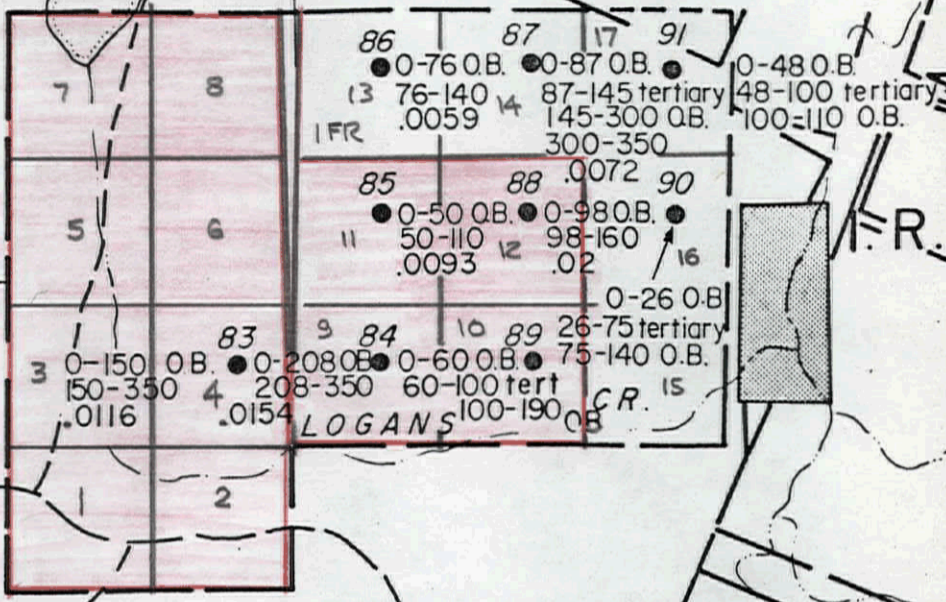
COURTNEY LAKE

93
● 0-120 O.B.
120-180
.0024

92
● 0-120 O.B.
120-300
.0025

35'

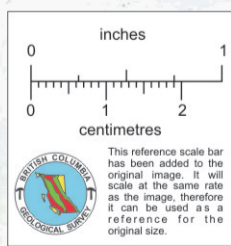
AREA 7
"HIP" GROUP
18 CLAIMS



"SKI" GROUP
26 CLAIMS

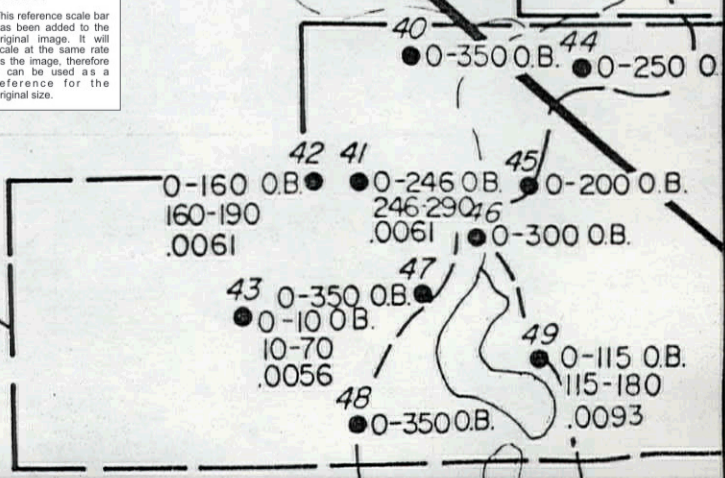
"SNO" GROUP
127 CLAIMS

AREA 5
"DUD" GROUP
14 CLAIMS



ASPEN GROVE

SCALE 1" = 2000'
-.0116 - % Cu



QUILCHENA

FORFEITURE OF MINERAL CLAIMS

DETAILS OF EXPLORATION AND DEVELOPMENT WORK ON FORFEITED MINERAL CLAIMS

(to be submitted within 90 days of forfeiture pursuant to Subsection 2(b) of Section 52 of the B.C. Mineral Act)

TO: B.C. MINISTER OF MINES

NAMES OF CLAIMS FORFEITED (Rec. Nos.): HIP 1-12
Record Nos. 46300H - 46311H

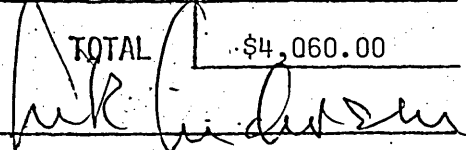
MINING DIVISION: Nicola

LOCATION OF CLAIMS: N.T.S. 92 H/15E. 4 miles NNE of
Aspen Grove (see attached map)

DATE CLAIMS EXPIRED: July 2, 1975; Recorded July 2, 1970

EXPLORATION WORK ON FORFEITED MINERAL CLAIMS FOR THE YEAR PRECEDING THE DATE OF EXPIRY	COST
Percussion drilling carried out from Nov. 15, 1970 to Dec. 15, 1970	
Hole No. 83 (HIP 4) - 350'	
Hole No. 84 (HIP 9) - 350'	
Hole No. 85 (HIP 11) - 110'	
Hole No. 88 (HIP 12) - 160'	
Hole No. 89 (HIP 10) - 190'	
<u>Total</u> 1160'	
Total expenditure @ \$3.50/ft.	\$4,060.00
- See attached map for drill hole locations and composite assay values.	

TOTAL \$4,060.00

Signature 
 Name (print) ERIK ANDERSEN
 Agent for: BETHLEHEM COPPER CORPORATION
 DATE Oct. 7, 1975

FORFEITURE OF MINERAL CLAIMS

DETAILS OF EXPLORATION AND DEVELOPMENT WORK ON FORFEITED MINERAL CLAIMS

(to be submitted within 90 days of forfeiture pursuant to Subsection 2(b) of Section 52 of the B.C. Mineral Act)

TO: B.C. MINISTER OF MINES

NAMES OF CLAIMS FORFEITED (Rec. Nos.): MX 1-6

Record Nos. 49919K - 49924K

MINING DIVISION: Nicola

LOCATION OF CLAIMS: N.T.S. 92 I/7W

DATE CLAIMS EXPIRED: Aug. 13, 1975; Recorded Aug. 13, 1971

EXPLORATION WORK ON FORFEITED MINERAL CLAIMS
FOR THE YEAR PRECEDING THE DATE OF EXPIRY

COST

Percussion drilling - Aug. 20-25, 1971.

(a) Hole MX-71-1 (MX #1 M.C.)

0-150' - Overburden

(b) Hole MX-71-2 (MX #3 M.C.)

0-210' - Overburden

Total footage 360'

Total expenditures @ \$3.50/ft.

\$1,260.00

See attached plan for drill hole locations.

TOTAL

\$1,260.00

Signature

Name (print)

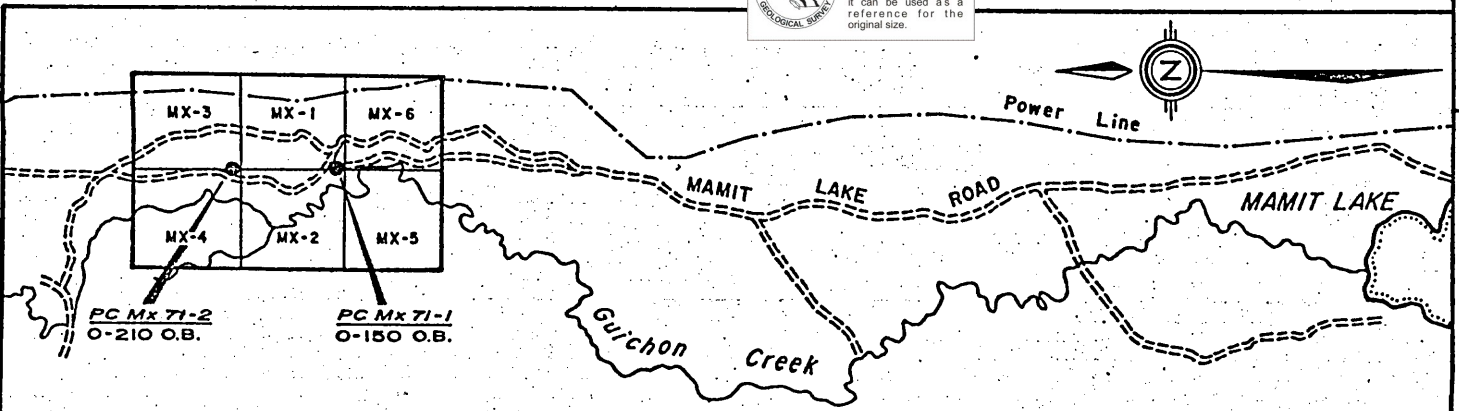
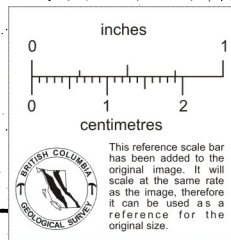
ERIK ANDERSEN

Agent for:

BETHLEHEM COPPER CORPORATION

DATE

Oct. 7, 1975



DATE REVISED	BY	DEPT. — EXPLORATION
		DRAWN BY — ALTAIR/b.d.
		CHECKED — E.A.
		APPROVED —
		DATE — FEBRUARY, 1972
		SCALE — 1" = 1/2 mile

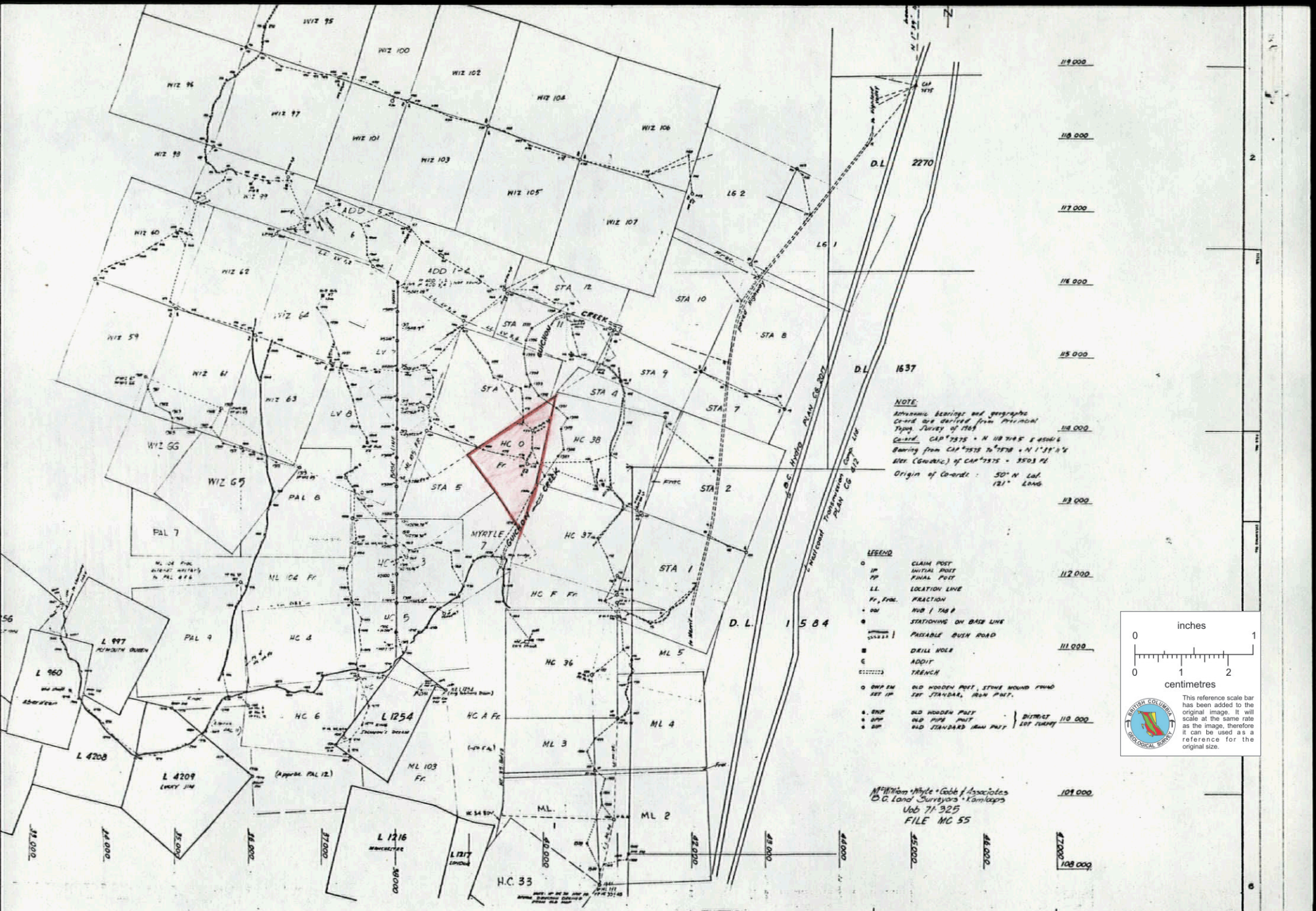


**Bethlehem
Copper**

CORPORATION LTD.

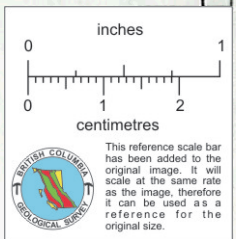
VANCOUVER BRITISH COLUMBIA

TITLE —	
M.X. GROUP No. 72-1	
FILE NUMBER —	DRAWING NUMBER —



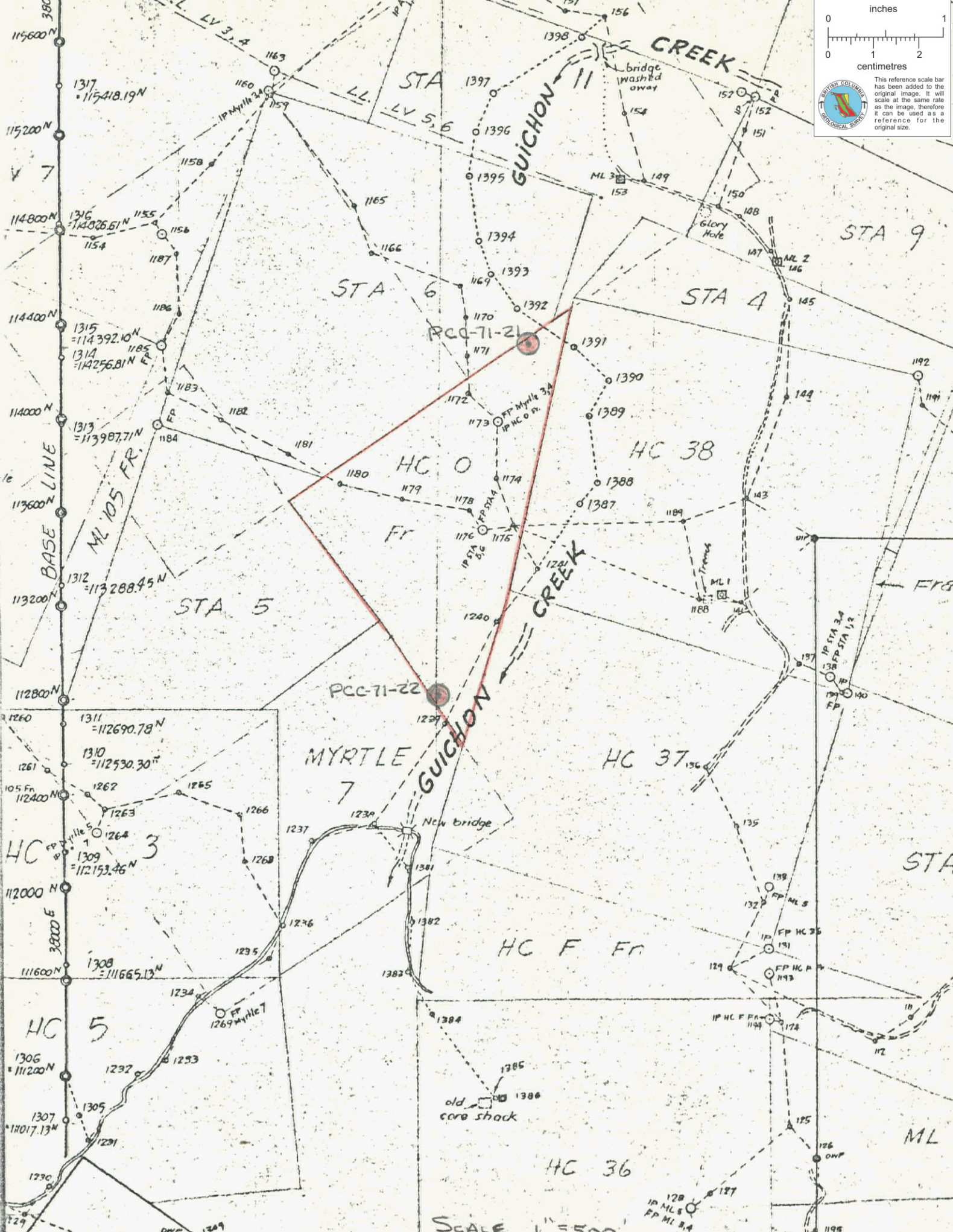
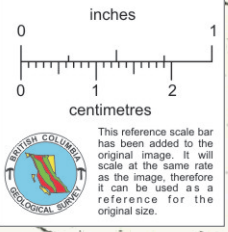
NOTE
 Azimuth bearings and geographic
 Co-ord are derived from Provincial
 Topog. Survey of 1968
 Co-ord. CAP 2575 = N 10 21'45" E 4506.6
 Bearing from CAP 2575 to 2578 = N 1° 51' 24"
 Elev. (Geoidic) of CAP 2575 = 3503.41
 Origin of Co-ord: 50° N Lat.
 121° Long.

- LEGEND**
- CLAIM POST
 - IP INITIAL POLE
 - FP FINAL POLE
 - LL LOCATION LINE
 - Fr, FRA. FRACTION
 - DP HUB / TAG #
 - STATIONING ON BASE LINE
 - ▬ PAVEMENT BUSH ROAD
 - DRILL HOLE
 - ⊕ ADDIT
 - ⋯ TRENCH
 - SWP 2M OLD WOODEN POST, STONE MOUND FOUND SET UP DISTRICT 110 000
 - SWP 1M OLD WOODEN POST SET STANDARD, IRON PILE.
 - SWP OLD WOODEN POST
 - SWP OLD PIPE PILE
 - SWP OLD STANDARD IRON PILE SET TURNED DISTRICT 110 000



M. William Myrtle & Associates
 D.G. Land Surveyors & Cartographers
 Job 71-325
 FILE MC 55

DATE REVISION	BY	JOB - EXPLORATION	FILE -	MAMIT LAKE PROJECT MINERAL CLAIMS SURVEY	
	DATE	ISSUED BY			FILE NUMBER -
	DATE	APPROVED			DRAWING NUMBER -
	DATE - AUGUST, 1971				
SCALE - 1" = 500'				DISTRICT 110 000 48,000 57,000 108,000	



SCALE 1" = 500'

DRILL HOLE LOG

BETHLEHEM COPPER CORPORATION LTD.

SHEET No. 1 of

Property	Chataway	Hole No.	PCC-71-21	Bearing	-	Elevation	2980	Logged by					I, Oliver
District	Nicola	Length	320'	Dip	-90°	Overburden	120'	Date					
Commenced	August, 1971	Latitude	114,300	Hor. Comp.	-	Recovery							
Completed	August, 1971	Departure	40,000	Vert. Comp.	320'	Purpose						Explore southeast of Vimy area	
DESCRIPTION		SULPHIDES	OXIDES	OTHERS	FROM	TO	SAMPLE No.	PPM Cu.	% Mo.	Oz. Au.	Oz. Ag.	% RECOV.	
(120'-140')		Rusty stained.											
(120'-320')		Granodiorite Grey, some pink, mainly quartz and feldspar, some biotite, muscovite and epidote, fair amount of magnetite											
					120	130		161					
					130	140		122					
					140	150		89					
					150	160		73					
					160	170		90					
					170	180		88					
					180	190		120					
					190	200		91					
					200	210		102					
					210	220		68					
					220	230		59					
					230	240		80					

WELL HOLE LOG

BETHLEHEM COPPER CORPORATION LTD.

SHEET No. 1 of 2

Property	Chataway	Hole No.	PCC-71-22	Bearing	-	Elevation	2980'	Logged by	I. Oliver
District	Nicola	Length	280'	Dip	-90°	Overburden	134'	Date	August 2, 1971
Commenced	August, 1971	Latitude	112,800	Hor. Comp.	-	Recovery	-		
Completed	August, 1971	Departure	39,600	Vert. Comp.	280	Purpose	Explore southeast of Vimy area		

DESCRIPTION	SULPHIDES	OXIDES	OTHERS	FROM	TO	SAMPLE No.	PPM Cu.	% Mo.	Oz. Au.	Oz. Ag.	% RECOV.
(134'-190') <u>Granodiorite</u> Grey, some pink, minor biotite and hornblende, traces of epidote, 2 to 3% magnetite, no visible copper mineralization.				134	140		75				
				140	150		72				
				150	160		78				
				160	170		84				
				170	180		64				
				180	190		81				
(190'-280') <u>Granodiorite</u> As above but more magnetite (5%) and mafic minerals, particularly biotite, minor yellowish mica, no visible copper mineralization.				190	200		66				
				200	210		64				
				210	220		54				
				220	230		61				
				230	240		66				
				240	250		71				

