

APPROX. POSITION
SHR 7
LOC. 15 MAY 1965
RECORD No. 12416

APPROX. POSITION
SHR 8
LOC. 15 MAY 1965
RECORD No. 12417

JOY 3
LOC. 8 JUNE 1965
RECORD No. 12443

JOY 1
LOC. 8 JUNE 1965
RECORD No. 12441

SHR 5
LOC. 19 APRIL 1965
RECORD No. 12367

SHR 3
LOC. 19 APRIL 1965
RECORD No. 12365

SHR 1
LOC. 19 APRIL 1965
RECORD No. 12350

APPROX. POSITION
N.D. # 24
LOC. 27 JUNE 1970
RECORD No. 27697

SHR 2
LOC. 19 APRIL 1965
RECORD No. 12351

SHR 4
LOC. 19 APRIL 1965
RECORD No. 12366

SHR 6
LOC. 19 APRIL 1965
RECORD No. 12368

JOY 2
LOC. 8 JUNE 1965
RECORD No. 12442

JOY 4
LOC. 8 JUNE 1965
RECORD No. 12444

APPROX. POSITION
N.D. # 22
LOC. 27 JUNE 1970
RECORD No. 27685

APPROX. POSITION
ELK # 16
LOC. 12 APRIL 1967
RECORD No. 19710

ELK # 5
LOC. 27 SEPT 1965
RECORD No. 12702

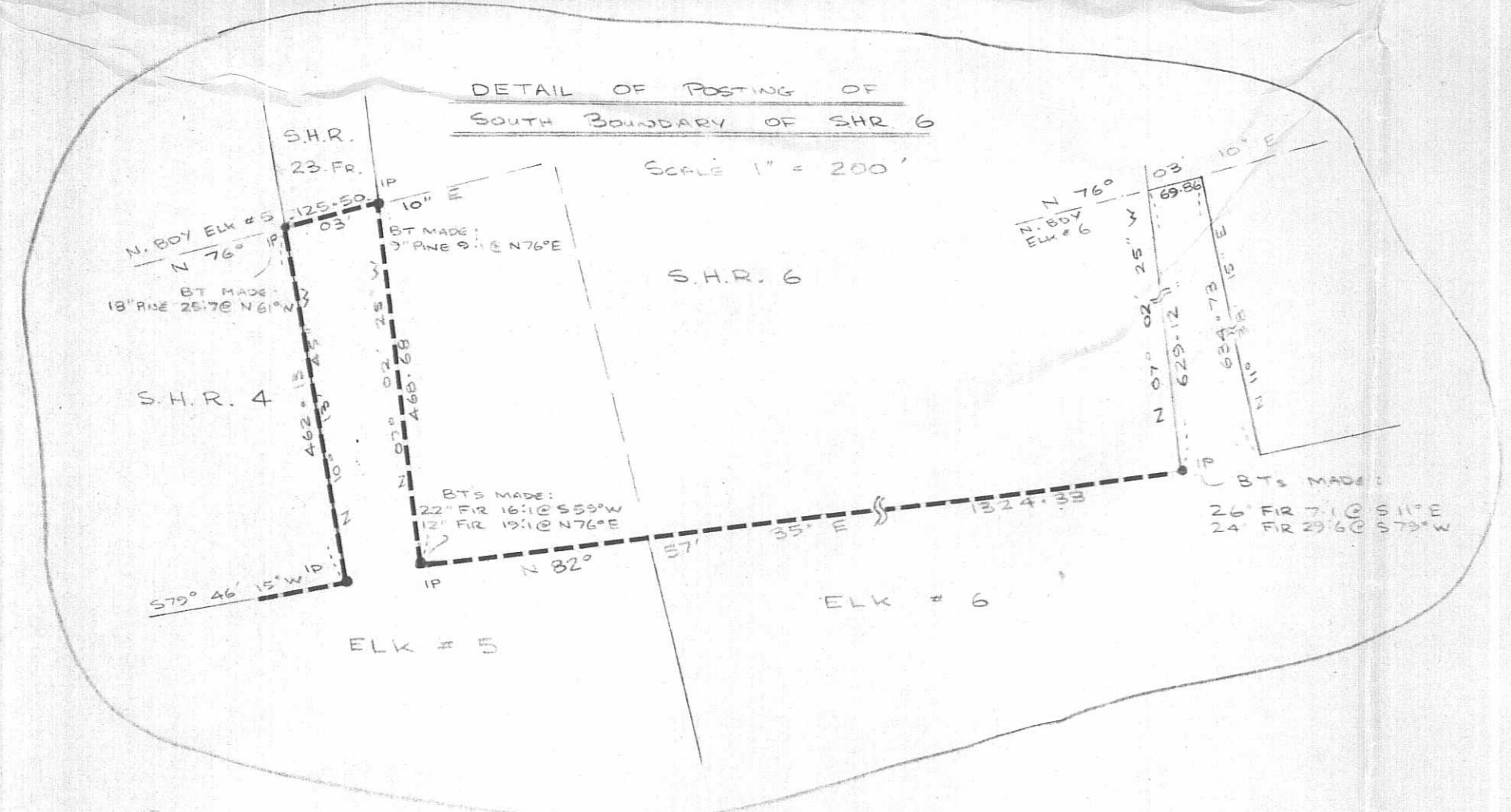
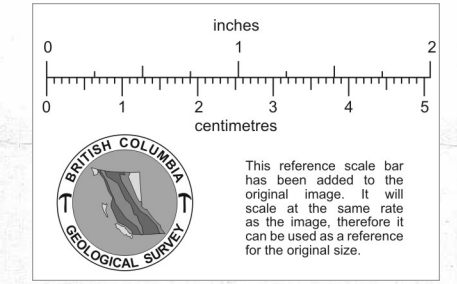
ELK # 6
LOC. 27 SEPT 1965
RECORD No. 12703

APPROX. POSITION
ELK # 13

APPROX. POSITION
ELK # 4

APPROX. POSITION
ELK # 3

APPROX. POSITION
ELK # 15



- LEGEND**
- #1 SHR 142 CLAIM POST AND DESIGNATION
 - IP B.C.L.S. IRON SURVEY POST
 - 509 TRAVELER HUB WITH A NUMBERED ALUMINUM TAG
 - DIAMOND DRILL HOLE
 - ROAD
 - CREEK WITH DIRECTION OF FLOW
 - BOUNDARIES MARKED BY BLAZED TREES
 - BTS MADE BOUNDARY TREES MADE FOLLOWED BY TYPE OF FILE AND BEARING AND MAGNETIC DECLINATION IF TREE

Point	Bearing	Distance	X	Y
#1 SHR 142	N 85° 19' 25" E	1764.61	10,002.00	10,000.00
#2 SHR 142	N 70° 46' 15" E	1682.61	10,208.62	11,739.50
#1 SHR 344	N 82° 37' 35" E	1324.35	10,597.41	13,395.37
#2 SHR 344	N 78° 21' 45" E	1469.51	10,755.72	14,709.72
#1 SHR 142	N 76° 24' 10" E	1487.47	11,056.14	16,149.02
#2 SHR 344	S 80° 29' 10" W	500.87	10,597.41	13,395.37
#1 SHR 23 FR			10,547.68	13,098.64

92H/9W
Similkameen M.D.,
Christian Creek

Department of
Mines and Petroleum Resources
ASSESSMENT REPORT
NO. ~~4444~~ MAP #11

REV. NO.	DATE	REVISION	DR.	CH.	APP.

CANWEX EXPLORATIONS LIMITED

SURVEY OF SHR 1-6 AND JOY 1-4 GROUP OF MINERAL CLAIMS - CHRISTIAN CREEK AREA.

McELHANNEY ASSOCIATES
PROFESSIONAL LAND SURVEYORS
Vancouver, B.C.

DESIGNED - <u>RF</u>	SCALE	HORIZ. 1" = 300'
DRAWN - <u>RF</u>	VERT.	
CHECKED - <u>RF</u>	DATE	5 DECEMBER 1972
APPROVED - <u>J.M.M.</u>	JOB NO.	08728-0
CLIENT DWG. NO.	McASSOC. DWG. NO.	REV.
008375	08728-A	