


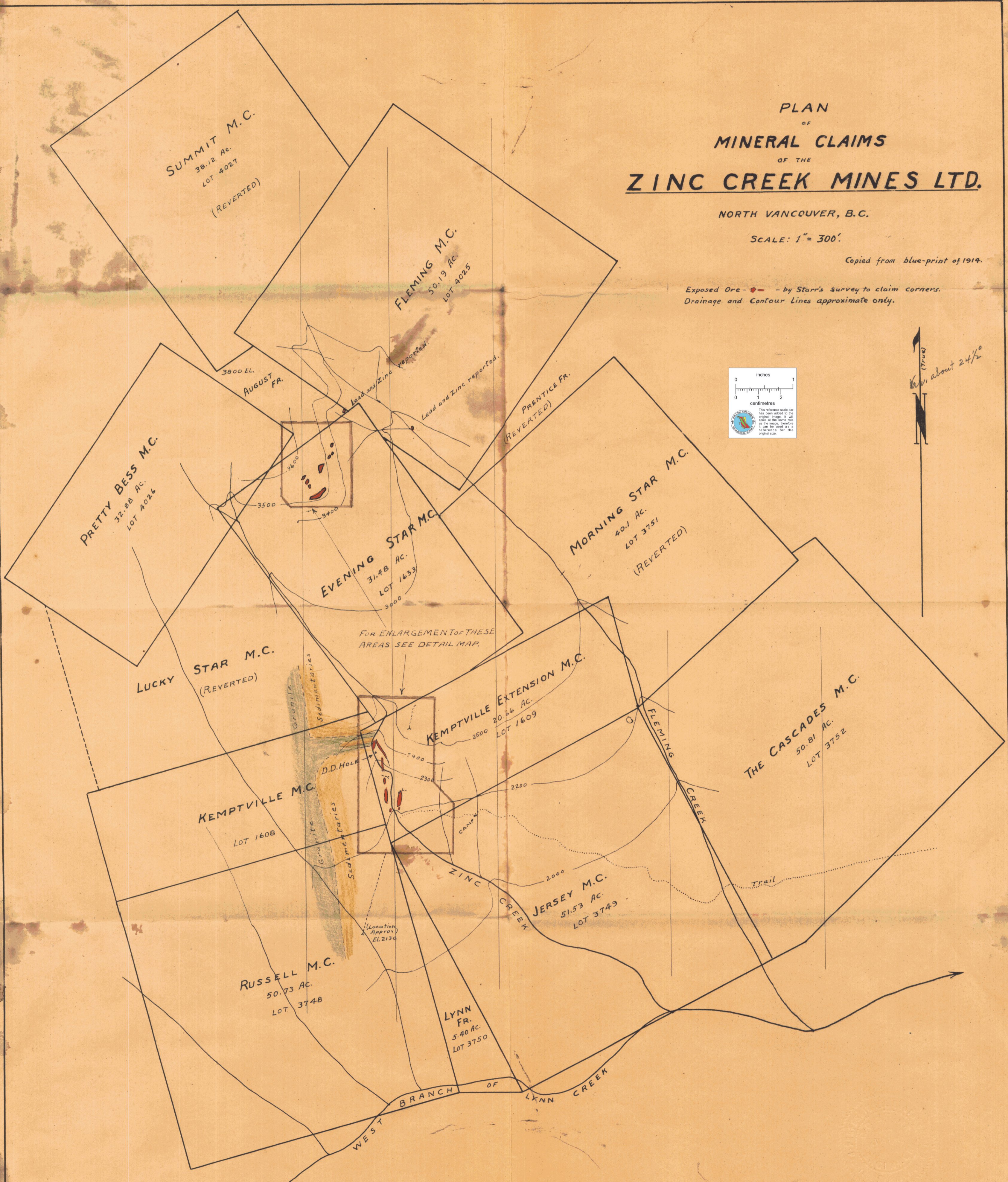
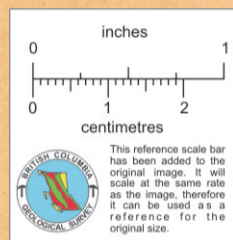
PLAN  
OF  
MINERAL CLAIMS  
OF THE  
**ZINC CREEK MINES LTD.**

NORTH VANCOUVER, B.C.

SCALE: 1" = 300'

Copied from blue-print of 1914.

Exposed Ore -  - by Starr's survey to claim corners.  
Drainage and Contour Lines approximate only.



To accompany report of Chas. C. Starr  
May 1926

008255