

LEGEND

- ⊠, ⊙ RAISE, BOREHOLE COLLAR
- ⊠, ○ THROUGH RAISE, BOREHOLE
- ⊠, ◦ RAISE, BOREHOLE BREAK-THROUGH
- STOPE WALL
- ==== 20 LEVEL DRIFT
- ==== 21 LEVEL DRIFT
- ==== 23 LEVEL DRIFT
- ==== 24 LEVEL DRIFT
- (L-6C) 1:250 SCALE PLATE NUMBER

PROPERTY FILE

WESTMIN RESOURCES LTD.

WESTERN MINES DIVISION

MYRA FALLS OPERATIONS

20, 21, 23 & 24 LEVELS

TRUE COMPOSITE PLAN

007675

3340 N

3880 N

3700 N

3520 N

3400 E

3640 E

3880 E

4120 E

K330

(L-6C)

(L-8A)

(L-9B)

(L-9A)

(L-7A)

(K-7D)

(K-8C)

(K-9C)

(K-8D)

3160 E

TRUE NORTH

SHAFT

BACKFILL HOLE No. 1

BACKFILL HOLE No. 2

FUEL LINE STORAGE

WAREHOUSE

LUNCH

ELEC

DML

24 LEVEL REFUGE STN.

24 ORAVEL RSE.

24-329 TEMP. W.P.

24-329 DR. E.

24-329 DR. E.

24-329 DR. E.

24-329 DR. E.

24-329 DR. E.

24-329 DR. E.

24-329 DR. E.

24-329 DR. E.

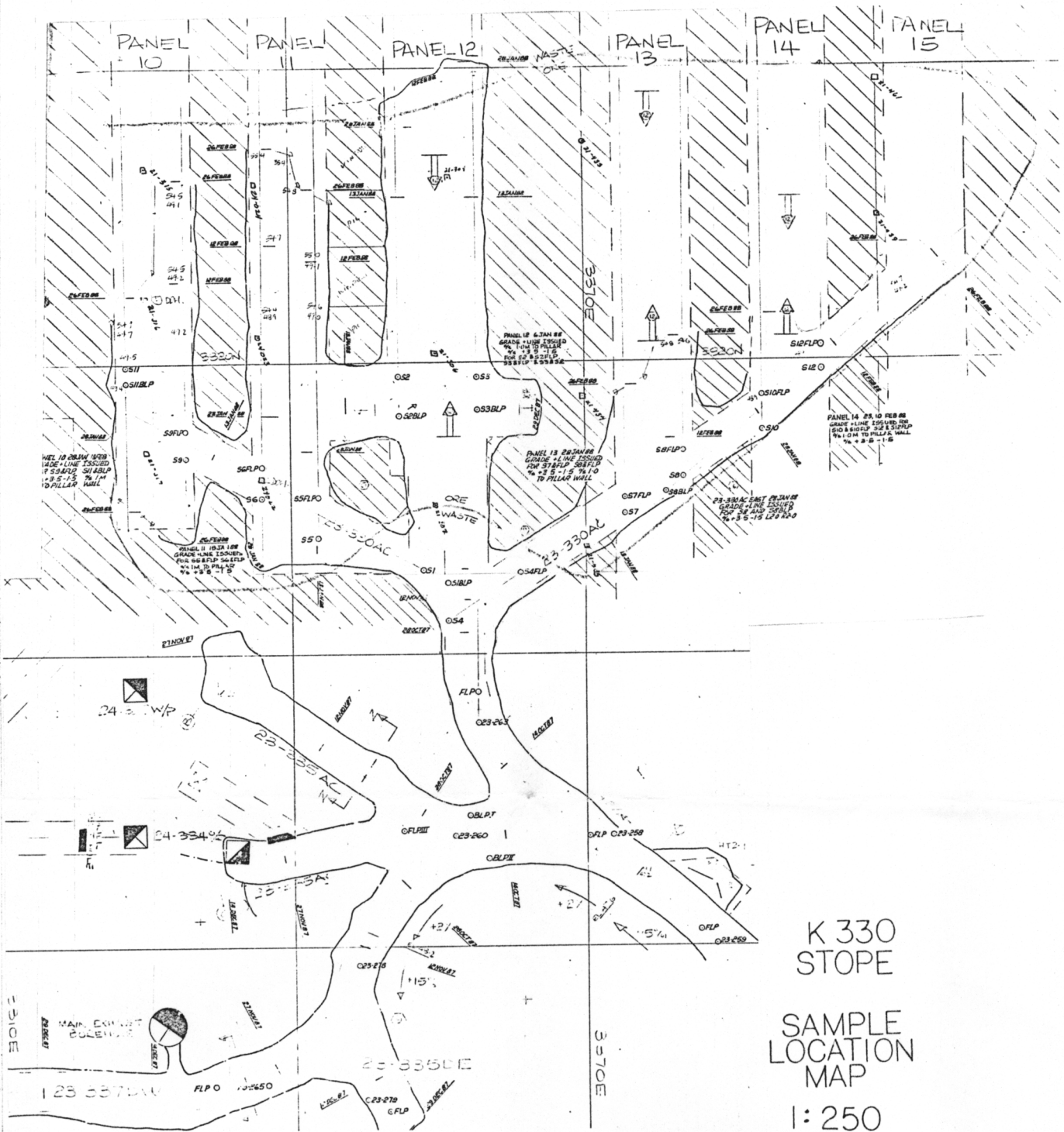
24-329 DR. E.

24-329 DR. E.

24-329 DR. E.

24-329 DR. E.

24-329 DR. E.



K 330
STOPE

SAMPLE
LOCATION
MAP

1:250