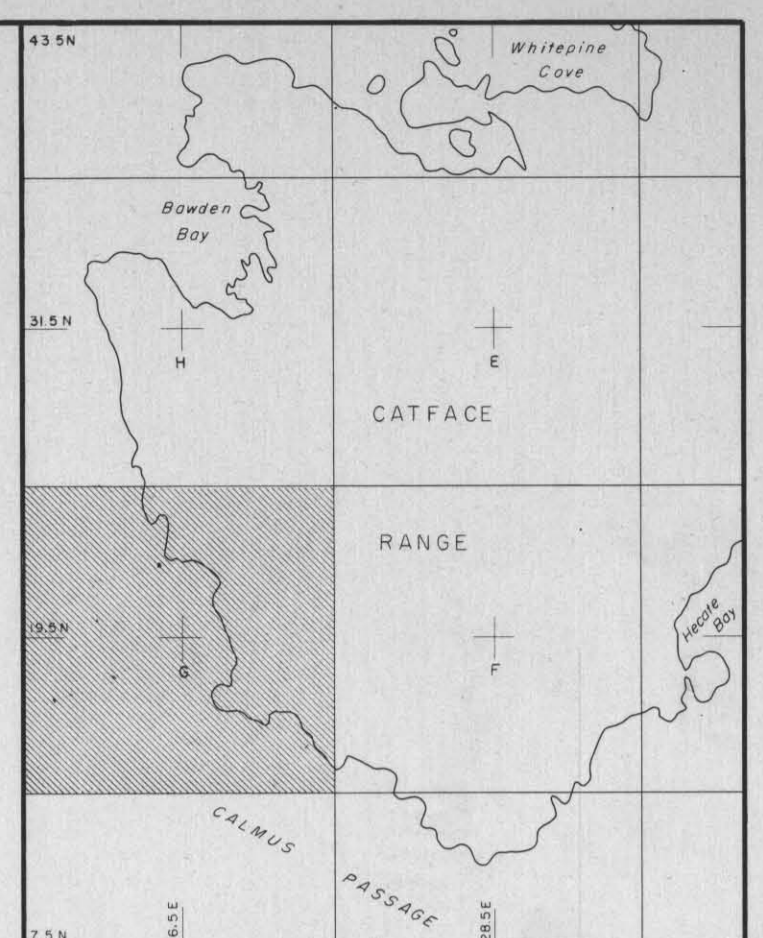
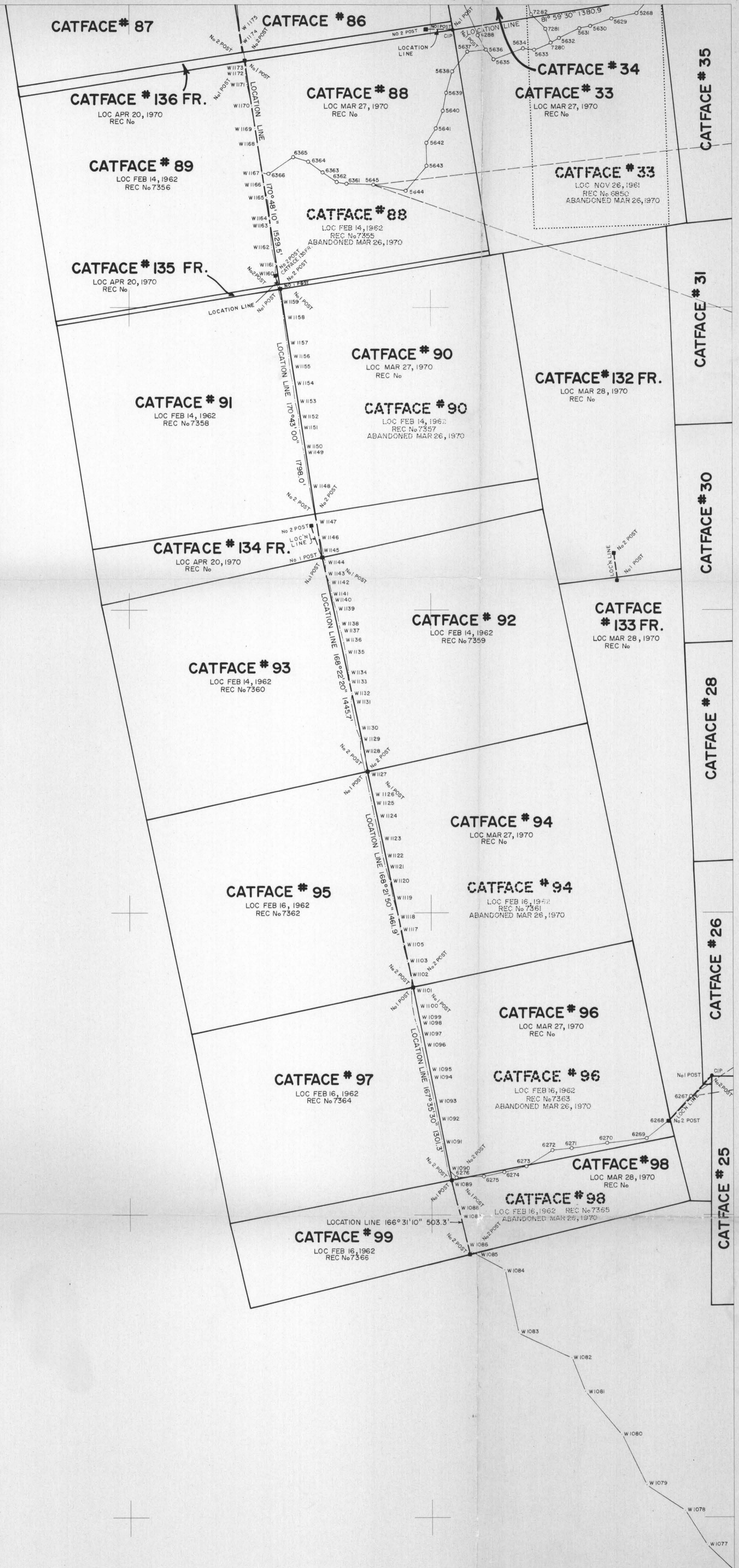


25,500 N  
23,500 N  
21,500 N  
19,500 N  
17,500 N  
15,500 N  
13,500 N

TABLE OF CO-ORDINATES  
(FALCONBRIDGE SURVEY STATIONS)

STATION	LATITUDE	DEPARTURE	STATION	LATITUDE	DEPARTURE
TH	16,876.55	29,693.74	W1131	20,898.56	19,978.85
W1010	16,722.08	29,651.33	W1132	20,849.16	19,979.85
W1011	16,636.49	29,608.26	W1133	21,028.38	19,967.26
W1012	16,492.29	29,559.53	W1134	21,089.07	19,961.97
W1013	16,435.70	29,551.16	W1135	21,224.82	19,934.63
W1014	16,340.08	29,504.40	W1136	21,304.12	19,918.14
W1015	16,213.19	29,457.39	W1137	21,371.99	19,900.34
W1016	16,129.84	29,432.47	W1138	21,415.59	19,890.18
W1017	16,040.21	29,393.41	W1139	21,515.67	19,871.87
W1018	16,108.39	29,239.36	W1140	21,570.42	19,851.01
W1022	16,081.33	29,123.77	W1141	21,611.78	19,842.85
W1023	16,004.25	28,944.80	W1142	21,687.34	19,828.71
W1024	15,985.49	28,905.46	W1143	21,744.13	19,806.65
W1025	16,065.43	28,805.16	W1144	21,819.22	19,797.99
W1026	16,092.98	28,710.71	W1145	21,864.47	19,782.28
W1027	16,186.00	28,592.30	W1146	21,978.41	19,761.15
W1028	16,228.06	28,536.61	W1147	22,090.63	19,737.30
W1029	16,250.07	28,426.96	W1148	22,327.09	19,701.91
W1030	16,356.98	28,262.85	W1149	22,543.24	19,664.34
W1031	16,423.69	28,235.02	W1150	22,580.77	19,657.73
W1032	16,467.86	28,218.27	W1151	22,712.63	19,632.07
W1033	16,472.72	28,014.09	W1152	22,784.99	19,625.72
W1034	16,427.98	27,973.17	W1153	22,886.51	19,601.97
W1035	16,294.10	27,953.96	W1154	23,004.40	19,588.15
W1036	16,256.52	27,955.51	W1155	23,109.53	19,566.21
W1037	16,201.40	27,867.37	W1156	23,177.78	19,559.41
W1038	16,234.90	27,721.16	W1157	23,270.31	19,550.03
W1039	16,251.96	27,640.26	W1158	23,444.21	19,518.99
W1040	16,266.15	27,436.55	W1159	23,545.92	19,516.09
W1041	16,199.88	27,307.19	W1160	23,718.95	19,471.17
W1042	16,181.07	27,198.61	W1161	23,780.07	19,470.94
W1043	16,229.25	26,990.86	W1162	23,899.33	19,441.78
W1044	16,253.20	26,778.31	W1163	24,044.43	19,440.35
W1045	16,195.02	26,554.18	W1164	24,095.81	19,426.99
W1046	16,146.84	26,450.67	W1167	24,393.50	19,378.19
W1047	16,035.56	26,325.29	W1168	24,581.55	19,352.61
W1048	16,027.28	26,050.13	W1169	24,690.03	19,336.37
W1049	16,012.27	25,964.59	W1170	24,835.70	19,313.07
W1050	16,000.71	25,861.49	W1171	24,973.11	19,281.25
W1051	16,008.98	25,659.02	W1172	25,044.08	19,277.04
W1052	15,968.09	25,550.48	W1173	25,089.52	19,267.89
W1053	15,981.63	25,399.51	W1174	25,232.24	19,248.47
W1054	16,039.72	25,370.98	W1175	25,317.39	19,231.86
W1055	16,030.53	25,208.64	W1176	25,604.79	19,202.51
W1056	16,026.06	25,034.08	W1177	25,769.14	19,175.51
W1057	16,004.78	24,852.93	W1178	25,821.66	19,166.59
W1058	15,973.13	24,712.51	W1179	25,834.25	19,174.26
W1059	15,957.31	24,584.65	W1180	25,919.42	19,163.62
W1060	15,929.48	24,543.84	W1181	26,034.67	19,132.75
W1061	15,864.07	24,468.22	W1182	26,177.01	19,088.47
W1062	15,829.95	24,412.88	W1183	26,447.66	19,048.96
W1063	15,795.45	24,332.67	W1184	26,683.66	19,002.36
W1064	15,786.50	24,224.65	W1185	26,843.70	19,141.70
W1065	15,816.39	24,167.36	W1186	26,920.23	19,190.85
W1066	15,769.76	24,063.64	W1187	26,946.53	19,243.14
W1067	15,761.68	23,933.15	W1188	26,908.24	19,315.07
W1068	15,731.85	23,769.96	W1189	26,930.55	19,395.18
W1069	15,707.18	23,739.21	W1190	26,930.88	19,490.85
W1070	15,625.62	23,707.31	W1191	27,042.05	19,453.15
W1071	15,517.06	23,606.70	W1210	27,102.67	19,372.73
W1072	15,439.98	23,519.61	W1211	27,240.37	19,314.29
W1073	15,328.36	23,290.14	W1212	27,343.98	19,286.42
W1074	14,966.14	22,901.71	W1213	27,417.59	19,237.32
W1075	14,880.52	22,775.16	W1214	27,509.46	19,199.82
W1076	15,075.08	22,573.12	W1215	27,602.89	19,171.25
W1077	15,317.69	22,323.02	W1216	27,755.39	19,047.11
W1078	15,548.08	22,177.69	W1217	27,777.20	18,993.16
W1079	15,706.98	21,925.44	W1218	27,860.13	18,902.61
W1080	16,051.47	21,762.54	W1219	28,040.54	18,797.44
W1081	16,311.77	21,521.26	W1220	28,229.52	18,741.17
W1082	16,558.89	21,435.24	W1221	28,291.25	18,769.45
W1083	16,719.27	21,080.54	W1222	28,343.38	18,815.37
W1084	17,138.63	20,987.04	W1223	28,485.02	18,778.81
W1085	17,249.12	20,767.76	W1224	28,626.44	18,753.75
W1086	17,326.21	20,745.17	W1225	28,821.83	18,724.33
W1087	17,501.86	20,702.43	W1226	28,953.02	18,690.75
W1088	17,556.10	20,682.14	W1227	29,118.23	18,660.56
W1089	17,744.24	20,642.66	W1228	29,238.41	18,650.00
W1094	18,414.49	20,483.09	W1229	29,370.44	18,624.56
W1095	18,471.08	20,474.06	W1230	29,523.22	18,605.52
W1096	18,626.58	20,438.20	W1231	29,578.83	18,588.17
W1097	18,703.07	20,427.97	W1232	29,653.88	18,553.83
W1098	18,775.26	20,408.52	W1233	29,785.43	18,535.30
W1099	18,814.60	20,407.48	W1234	29,904.42	18,507.93
W1100	18,885.58	20,385.49	W1235	29,966.04	18,492.39
W1101	19,003.79	20,369.78	W1236	30,218.37	18,426.40
W1102	19,075.72	20,367.53	W1237	30,419.16	18,463.96
W1103	19,183.94	20,347.19	W1238	30,523.43	18,440.86
W1105	19,298.95	20,317.80	W1239	30,648.67	18,393.36
W1117	19,400.95	20,302.22	W1240	30,696.65	18,416.03
W1118	19,474.44	20,292.95	W1241	30,807.35	18,406.12
W1119	19,600.70	20,248.38	W1242	30,896.29	18,381.97
W1120	19,712.87	20,224.43	W1243	30,991.42	18,356.17
W1121	19,811.71	20,198.65	W1244	31,053.25	18,345.51
W1122	19,881.41	20,185.45	W1245	31,114.31	18,332.90
W1123	19,992.16	20,164.82	W1246	31,223.68	18,295.81
W1124	20,140.85	20,135.73	W1247	31,350.01	18,235.42
W1125	20,231.57	20,116.06	BASHER	36,324.04	17,205.60
W1126	20,286.94	20,095.15			
W1127	20,426.04	20,067.83	W1019	15,800.64	29,283.75
W1128	20,566.09	20,034.00	W1020	15,703.70	29,262.62
W1129	20,655.81	20,025.94	W1021	15,564.59	29,217.73
W1130	20,725.58	20,008.68			

FOR CO-ORDINATES OF LOCATION POSTS SEE McELHANNY ASSOCIATES DRAWING E  
FOR McELHANNY SURVEY STATIONS SEE DRAWING H.



**KEY PLAN**  
SCALE 1" TO 7000' (APPROX)

**LEGEND**

- 2022 DENOTES TRANSIT HUB WITH NUMBERED ALUMINUM IDENTIFICATION TAG
- W117 DENOTES TRAVEL HUB SET AND SURVEYED BY FALCONBRIDGE CREWS
- △6901 DENOTES CONTROL MONUMENT (BUILT RODS PERMANENTLY SET IN ROCK OR CONCRETE). FOR ADDITIONAL INFORMATION SEE MASSCO DRAW NO. 02382-A
- DENOTES CLAIM POST FOUND AND TIED BY SURVEY
- CIP DENOTES STANDARD LEGAL SURVEY MONUMENT SET TO REPLACE OR WITNESS LOCATION POST FOUND IN PLACE. MONUMENT IS 30" x 3" x 1/2" IRON BAR WITH CAP STAMPED WITH DATE AND B.C.L.S. COMMISSION NO. 368
- D DENOTES TRUE POSITION OF WITNESSED LOCATION POST. NO ACTUAL POST SET IN FIELD
- WP DENOTES WITNESS POST
- ==== DENOTES ROAD
- IP DENOTES INITIAL LOCATION POST OR IP
- FP DENOTES FINAL LOCATION POST OR FP
- LOC P DENOTES LOCATION POST IN CO-ORDINATE TABLES
- WT DENOTES WITNESS
- DENOTES TRIANGULATION RAY

**CO-ORDINATE ORIGIN**

MASSCO TAG NO. 6640 SET IN TOP OF 12" DIAMETER STUMP USED AS CO-ORDINATE ORIGIN (N 23,000, E 23,000) FOR ALL MASSCO SURVEYS AND ORIGINAL FALCONBRIDGE EXPLORATION SURVEYS

**BEARING DERIVATION**

BEARINGS ARE ASTROMERIC AND ARE DERIVED FROM STELLAR OBSERVATION REFERRED TO THE MERIDIAN THROUGH FALCONBRIDGE TRAVEL HUB NO. 217 HAVING APPROXIMATE VALUES OF N 23,250, E 23,897.

**DRAWING NUMBERS**

FOR DRAWING NUMBERS SEE INDEX PLAN

CATFACE COPPER DRAWING NUMBERS ARE DEFINED BY THE NORTH CO-ORDINATE FOLLOWED BY THE EAST CO-ORDINATE OF THE SHEET CENTER, BOTH DIVIDED BY 1000 AND FOLLOWED BY THE DRAWING SCALE. McELHANNY ASSOCIATES DRAWING NUMBERS ARE SHOWN AS LETTERS AND ARE DRAFTED CLOSE TO DRAWING CENTERS IN KEY PLAN.

REV. DATE	REVISION	DR. CH. APP.

**CATFACE COPPER MINES LIMITED**  
TOFINO, B.C.

**LOCATION LINE SURVEY OF CATFACE MINERAL CLAIMS**

McELHANNY ASSOCIATES  
PROFESSIONAL LAND SURVEYORS

DESIGNED	CHECKED	J.W.K.S.
DRAWN	APPROVED	D.S.M.
DWG. NO. 19.5-16.5-400		REV.
DATE: JUNE 15, 1970	SCALE: 1" TO 400'	

MELHANNY ASSOCIATES JOB 3292, 1969

CERTIFIED CORRECT  
*D.S. McElhanny* B.C.L.S.  
Dated this 15th day of June 1970