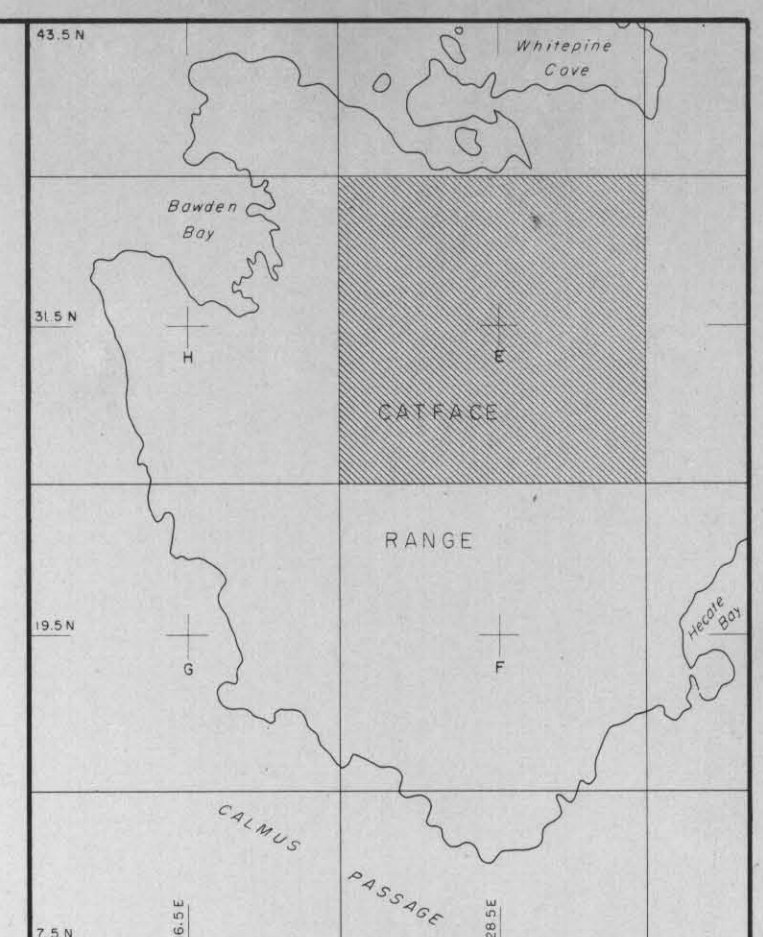


37,500 N  
35,500 N  
33,500 N  
31,500 N  
29,500 N  
27,500 N  
25,500 N



**KEY PLAN**  
SCALE 1" TO 7000' (APPROX)

**LEGEND**

- D6882 DENOTES TRANSIT HUB WITH NUMBERED ALUMINUM IDENTIFICATION TAG
- WHIT DENOTES TRAVERSE HUB SET AND SURVEYED BY FALCONBRIDGE CREW
- CO-ORDINATE POSITIONS OF THESE SURVEY STATIONS AND LOCATION POSTS, IN MOST CASES ARE DETERMINED BY ACCEPTING INFORMATION FROM FALCONBRIDGE SURVEY NOTES
- 1800'S W6 W7 W8 CATED DEAG AND COMPUTING TO W6850'S 25' N
- △490 DENOTES CONTROL MONUMENT
- FOR ALL PERMANENTLY SET IN ROCK OR CONCRETES FOR ADDITIONAL INFORMATION SEE W6850'S 25' N 2388.4
- DENOTES C.M.P. POST FOUND AND TIED BY SURVEY
- P DENOTES STANDARD LEGAL SURVEY MONUMENT SET TO BEHOLD OR A "LESS" LOCATED ON POST FOUND PLACE MONUMENT BY S.S.C.S.
- W6850'S 25' N W7 W8 CATED DEAG AND W6850'S 25' N W6850'S 25' N
- DENOTES TRUE POSITION OF WITNESSED LOCATION POST, NO ACTUAL POST SET IN FIELD
- WP DENOTES WITNESS POST
- ==== DENOTES ROAD
- N1 POST DENOTES INITIAL LOCATION POST OR IP
- N2 POST DENOTES FINAL LOCATION POST OR FP
- LOC.P DENOTES LOCATION POST IN CO-ORDINATE TABLES
- WT DENOTES WITNESS
- DENOTES TRIANGULATION RAY

**CO-ORDINATE ORIGIN**

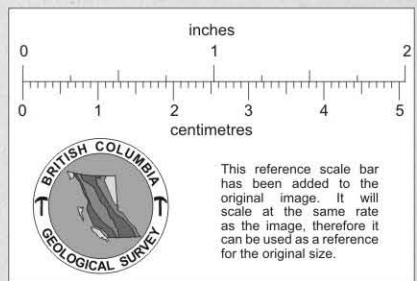
MEASSOC. TAG NO 6640 SET IN TOP OF 12" DIAMETER STUMP USED AS CO-ORDINATE ORIGIN IN 25000; E 25000 FOR ALL MEASSOC. SURVEYS AND ORIGINAL FALCONBRIDGE EXPLORATION SURVEYS

**BEARING DERIVATION**

BEARINGS ARE ASTROMERIC AND ARE DERIVED FROM STELLAR OBSERVATION REFERRED TO THE MERIDIAN THROUGH FALCONBRIDGE TRAVERSE HUB NO. 827 HAVING APPROXIMATE VALUES OF N 25025; E 2387'

**DRAWING NUMBERS**

FOR DRAWING NUMBERS SEE INDEX PLAN.  
CATFACE CORNER DRAWING NUMBERS ARE DEFINED BY THE NORTH CO-ORDINATE FOLLOWED BY THE EAST CO-ORDINATE OF THE SHEET CENTER, BOTH DIVIDED BY 1000 AND FOLLOWED BY THE DRAWING SCALE. McELHANNAY ASSOCIATED DRAWING NUMBERS ARE SHOWN AS LETTERS AND ARE DRAFTED CLOSE TO DRAWING CENTERS IN KEY PLAN.



REV	DATE	REVISION	DR	CH	APP

**CATFACE COPPER MINES LIMITED**  
TOFINO, B.C.

**LOCATION LINE SURVEY OF CATFACE MINERAL CLAIMS**

McELHANNAY ASSOCIATES  
PROFESSIONAL LAND SURVEYORS

DESIGNED	CHECKED	J.W.K.S.
DRAWN	J.W.K.S.	APPROVED D.S.M.
DWG. NO.	315-285-400	REV
DATE	JUNE 15, 1970	SCALE: 1" TO 400'

**TABLE OF CO-ORDINATES**  
( LOCATION POSTS )

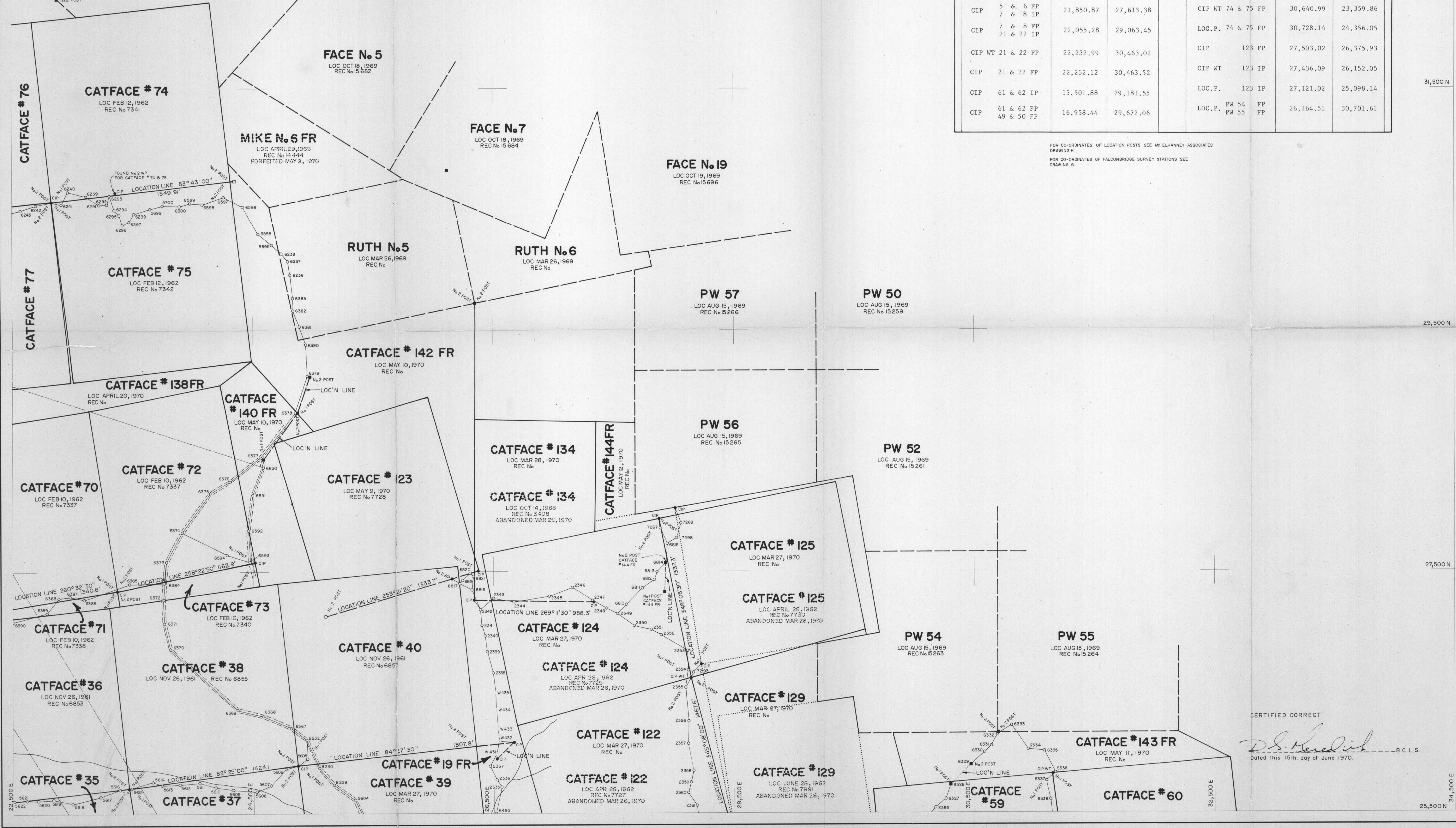
LOCATION POST	LATITUDE	DEPARTURE	LOCATION POST	LATITUDE	DEPARTURE	LOCATION POST	LATITUDE	DEPARTURE	LOCATION POST	LATITUDE	DEPARTURE
CIP 122 FP	26,719.14	28,242.06	LOC.P. 47 & 48 FP	16,066	29,503	CIP 17 & 18 FP	25,000.00	25,000.50	CIP 49,50&52IP	18,338.99	30,008.85
CIP 124&125 FP	28,018.98	28,035.42	LOC.P. 47 & 48 IP	16,135	27,972	CIP 17 & 18 IP	23,103.38	25,003.75	CIP 52,53&126FP	19,638.83	30,639.19
CIP WT 128&129 IP	24,980.55	29,701.16	LOC.P. 45 & 46 FP	16,150	26,462	CIP WT 1 & 2 IP	21,847.54	25,090.63	CIP 53,54&126IP	20,931.45	31,328.79
LOC.P. 128&129 IP	24,981.43	29,700.34	LOC.P. 43 & 44 FP	16,027	25,034	LOC.P. 1 & 2 FP	21,833.68	25,088.62	CIP 54 & 56 FP	22,298.26	31,633.62
CIP 128&129 FP	24,816.66	28,578.43	LOC.P. 41 & 42 FP	15,705	23,729	CIP 3 & 4 IP	20,549.33	24,877.50	CIP 56 & 58 IP	23,421.94	31,453.84
CIP 133 IP	25,953.65	26,529.48	LOC.P. 98 & 99 FP	17,249	20,768	LOC.P. 11 FP	20,757.04	26,247.22	CIP 58,59&60FP	24,801.11	31,242.08
CIP 132 FP	24,505.13	26,543.24	LOC.P. 96 & 97 FP	17,739	20,650	CIP 9 & 10 IP	20,627.97	27,719.52	CIP WT 59 & 60 IP	25,819.68	31,157.42
CIP 132 IP	24,505.13	26,543.24	LOC.P. 94 & 95 FP	19,009	20,371	CIP 9 FP	19,900.34	29,115.38	LOC.P. 59 & 60 IP	25,820.00	31,156.92
CIP 19 & 20 FP	24,878.78	27,190.96	LOC.P. 92 & 93 FP	20,441	20,076	CIP 39 & 40 IP	26,072.39	26,680.16	CIP WT 134 IP	27,269.47	26,353.75
CIP 33 & 34 IP	25,523.57	21,138.50	LOC.P. 90 & 91 FP	21,857	19,785	CIP 37 & 38 IP	25,897.77	24,880.82	LOC.P. 134 IP	27,269.47	26,353.95
CO-ORDINATES OF LOCATION POSTS OF ABANDONED CLAIMS			LOC.P. 88 & 89 FP	23,632	19,495	CIP 35 & 36 FP	25,709.87	23,469.20	CIP WT 134 FP	27,257.05	27,342.07
			LOC.P. 86 & 87 FP	25,142	19,250	CIP 33 & 34 FP	25,550.13	22,033.39	LOC.P. 134 FP	27,255.55	27,342.17
			LOC.P. 84 & 85 FP	26,099	19,010	CIP 68 & 69 FP	25,355.74	20,666.25	CIP 121&128 IP	23,868.25	28,911.81
			LOC.P. 82 & 83 IP	28,332	18,809	CIP 70 & 71 FP	27,121.89	22,042.84	CIP WT 121&128 IP	25,206.79	28,520.35
			LOC.P. 80 & 81 IP	29,961	18,493	CIP 72 & 73 IP	27,342.18	23,365.26	LOC.P. 121&128 FP	25,206.96	28,520.71
						CIP 72 & 73 FP	27,576.41	24,504.36	CIP WT 122&129 FP	26,626.77	28,144.16
						CIP 25 FP	18,428.80	22,352.40	LOC.P. 122&129 IP	26,625.47	28,144.16
						CIP 25 & 26 IP	18,428.14	23,815.38	CIP 124&125 FP	27,934.19	27,869.37
						CIP 26 & 27 IP	19,903.48	23,737.54	CIP 24 FP	17,803.47	24,999.73
						CIP 28 & 29 IP	21,331.44	23,670.36	CIP 22 FP	16,606.91	28,079.31
						CIP 30 IP	22,779.54	23,615.64	CIP 23 & 24 IP	16,852.05	26,368.71
						CIP 31 FP	24,242.13	23,561.04	CIP 78 & 79 IP	30,141.42	19,776.53
						CIP 5 & 6 IP	21,677.10	26,201.32	CIP 76 & 77 IP	30,402.51	21,333.53
						CIP 5 & 6 FP	21,850.87	27,613.38	CIP 74 & 75 IP	30,558.55	22,815.45
						CIP 7 & 8 FP	22,055.28	29,063.45	CIP WT 74 & 75 FP	30,640.99	23,359.86
						CIP WT 21 & 22 FP	22,232.99	30,463.02	LOC.P. 74 & 75 FP	30,728.14	24,356.05
						CIP 21 & 22 FP	22,232.12	30,463.52	CIP 123 FP	27,503.02	26,375.93
						CIP 61 & 62 IP	15,501.88	29,181.55	CIP WT 123 IP	27,436.09	26,152.05
						CIP 61 & 62 FP	16,958.44	29,672.06	LOC.P. 123 IP	27,121.02	25,098.14
									LOC.P. PW 54 FP	26,164.51	30,701.61
									LOC.P. PW 55 FP		

FOR CO-ORDINATES OF LOCATION POSTS SEE McELHANNAY ASSOCIATES DRAWING H  
FOR CO-ORDINATES OF FALCONBRIDGE SURVEY STATIONS SEE DRAWING G

**FACE No. 1**  
LOC OCT 18, 1969  
REC No 15676

**FACE No. 2**  
LOC OCT 18, 1969  
REC No 15679

NOTE: THESE CLAIMS ARE PLOTTED FROM A COMPASS AND CHAIN SURVEY DONE IN 1969. THE "FACE" CLAIMS WERE ORIGINALLY STAKED AS THE "SUN" CLAIMS, WHICH EXPIRED IN SEPT. OF 1969. THEY WERE RESTAKED, USING THE SAME POSTS, IN OCTOBER OF 1969.



CERTIFIED CORRECT  
*D. J. McElhannay*  
Dated this 15th day of June 1970. B.C.L.S.