

- possible MOD-GAC paper

-> send Richard negative of Debbie - folded chert (slide) - print to Campbell R.

- good aerial slide-looking SS  
- 900 zone aerial + model (real)

# DEBBIE - MEG

007021

Mar. 30/88

Notes by: Tom Schroeter

Intro: Barry Smee, Abernethy

Speaker: Richard Walker

Co-Authors: John Watkins, Ed Lyons

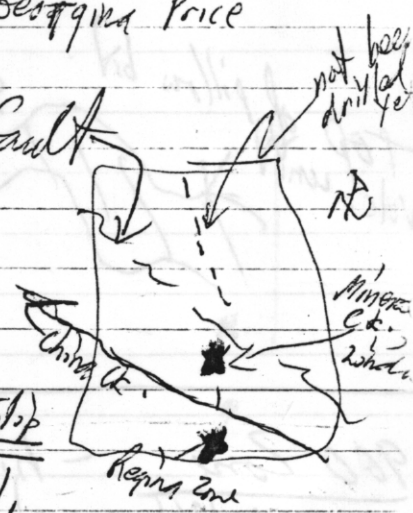
/Georgina Price

Beaufort Range Fault - major NW fault  
~ 247 units

Geol: - Siliceous, felsic volc. zone

- felsic 'domes'

Northern zone - incl. Beaufort Range Fault - strike-slip  
- near horizontal slickensides



- Sicker Gp. overlain by Nanaimo Fmn. cgl.

Central zone: strong N-S fault - thru Mineral Ck. + Linda zone

- includes Rogers Creek showing (structural repeat of Mineral Ck.)  
- basalt (BX), volcaniclastics, chert - layered tuff units (marine proximal turbidite)

- felsic dome-like centre near Regina workings

-> correlated Myra Fmn. at Debbie with Buttle Lake

- flows ( $\pm$  bx) with flow breccia tops

- basaltic tuff wacke with cherty rip-up clasts

- pillows, incl. 'budding' (breaking) - local chert filled interstices

- variolitic textures (top) of aphyric pillows

- hyaloclastites

- 'rhyolite' flows - low K ( $21\%$ ), qtz, keratophyre, high Na ( $3-6\%$ ), Si ( $10\%$ )

-> similar unit at Buttle Lk. (-> 'dacite')

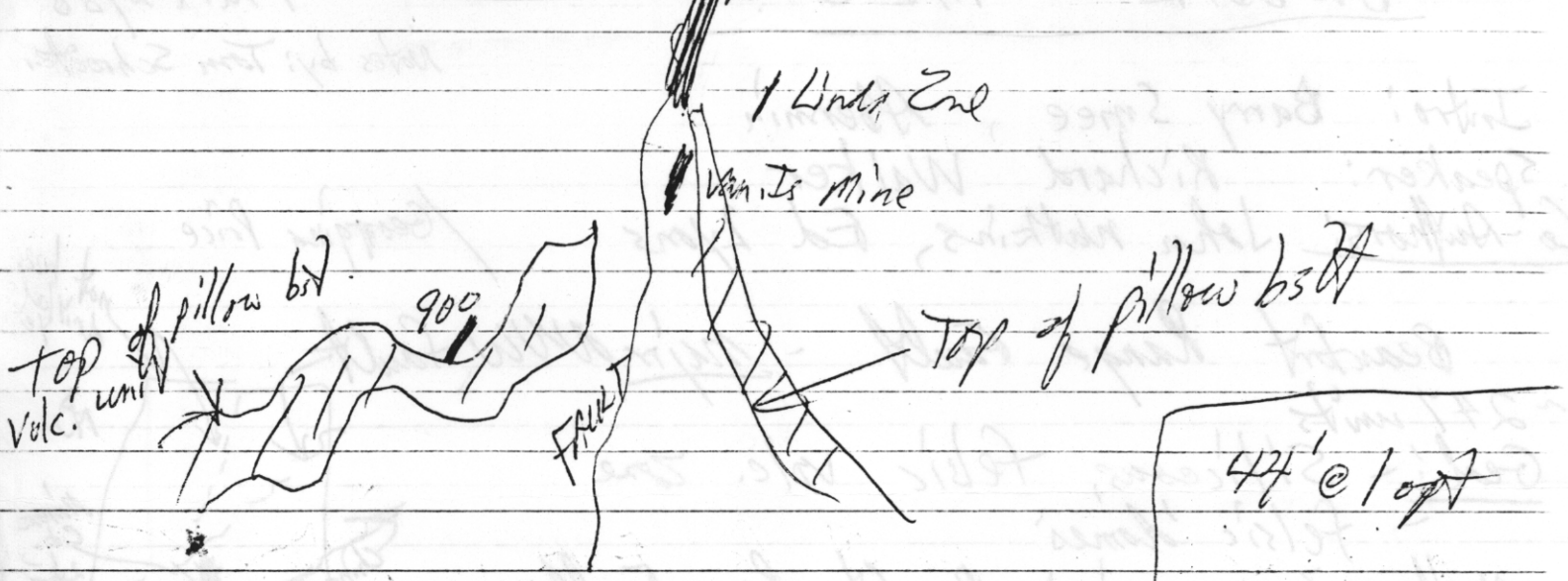
- distinct flow banding

Rogers Ck. - similar ser.  $\pm$  chl schist (à la Lynx mine)

(phyllitic) - also carries gypsum - syngenetic FW alt. zone

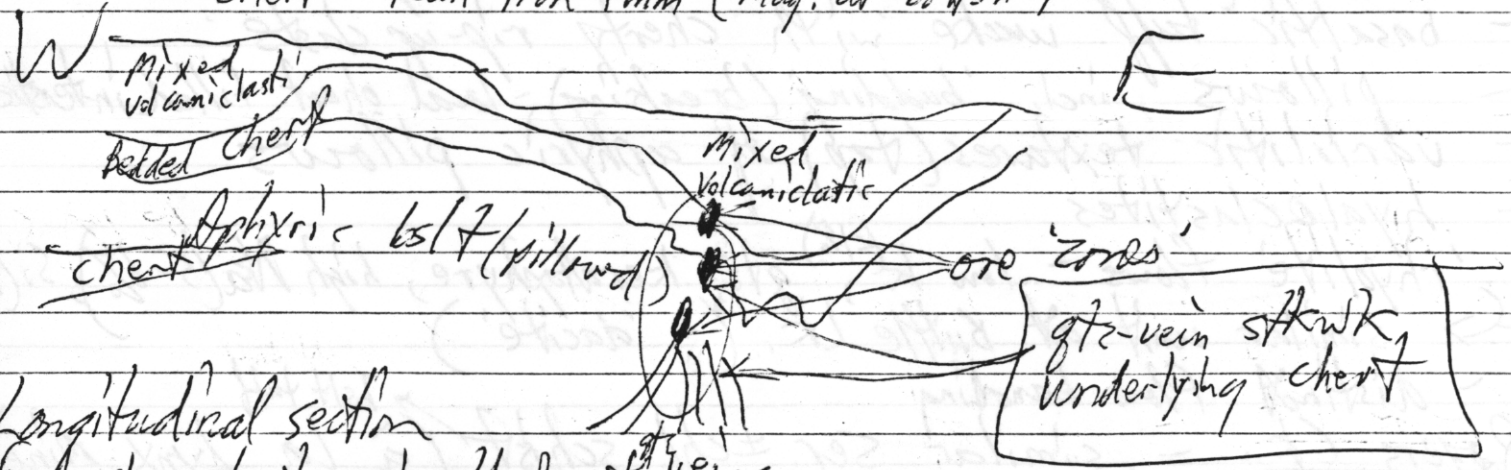
- incl. ZnS 'bands' (+ Pb, Cu)

Mineral Ch. - 900 Zone



900 Zone - highest grade at ~~at~~ interface with logging <sup>cut</sup>

- drilling using aluminum scaffolding (using BA core) - down to 725 ft
- environmentally very good → Hydro cor
- Geochem: 120 ppb Au > 80 ppb > 40 ppb contours
  - extends ~15 km long (Debbie → Thistle) over 25 km favourable sickle sp. rx.
  - local threshold ~100 ppb Au
  - chert = 'lean' iron form (mag. at bottom)

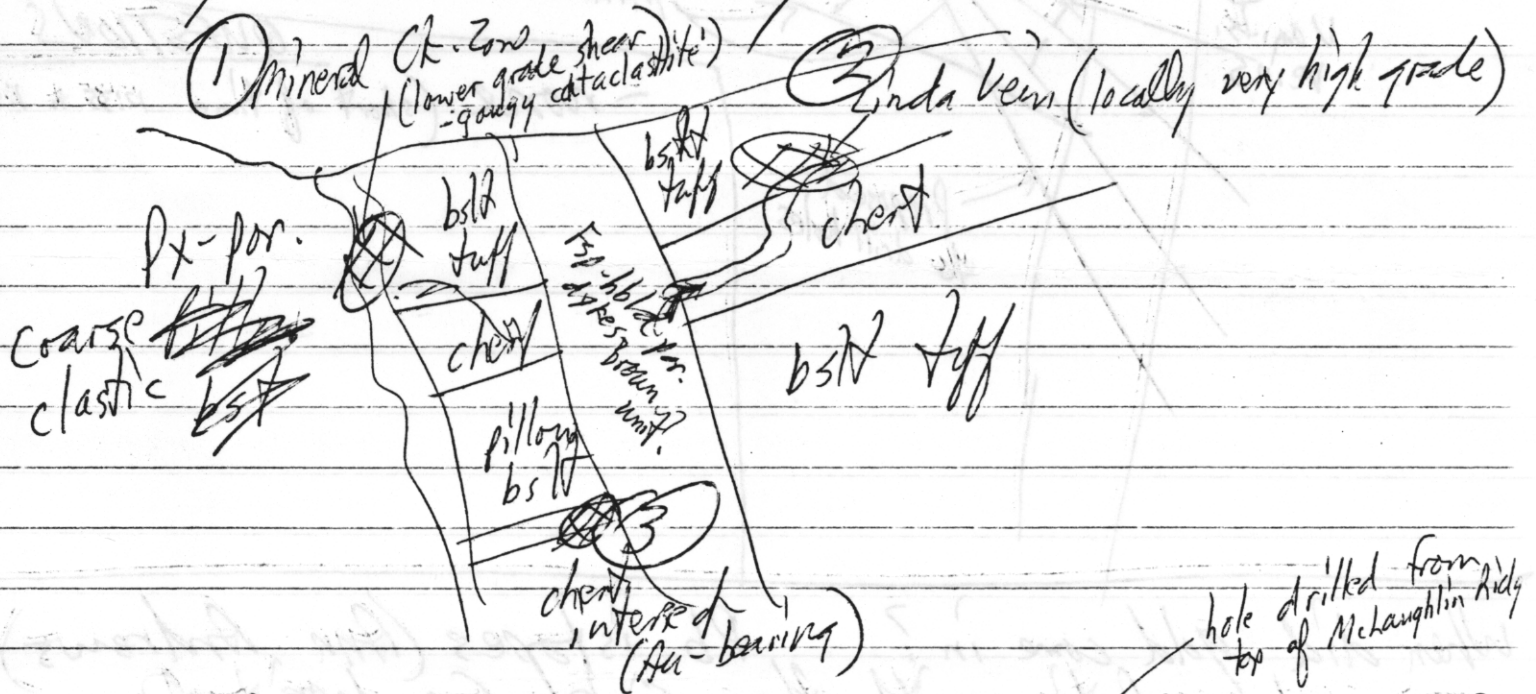


- Longitudinal section
  - incl. chert, qtz-streak, veins
  - chert is well folded - pinkish + Jasper phases - up to 350 ft
  - qtz-veining within chert + bed joint
  - qtz-vein + v.g. ; ind. narrow carbonate veinlets cutting qtz.



Mineralogy: VG, PY + mag 7 fr. arsenopy.  
- appears to be localized at synclinal troughs  
folds plunge SSE

MINERAL CREEK - main N-S regional fault  
host - bslt with ferroan dolomitic alt'n.  
(i.e. good neutralizer for acid potential)  
- Van. Is. Gold mine - in HW block of gtz veins  
Soil Geochem: >500 ppb > 100 - 500 ppb > 40 - 100  
- good N-S anomaly



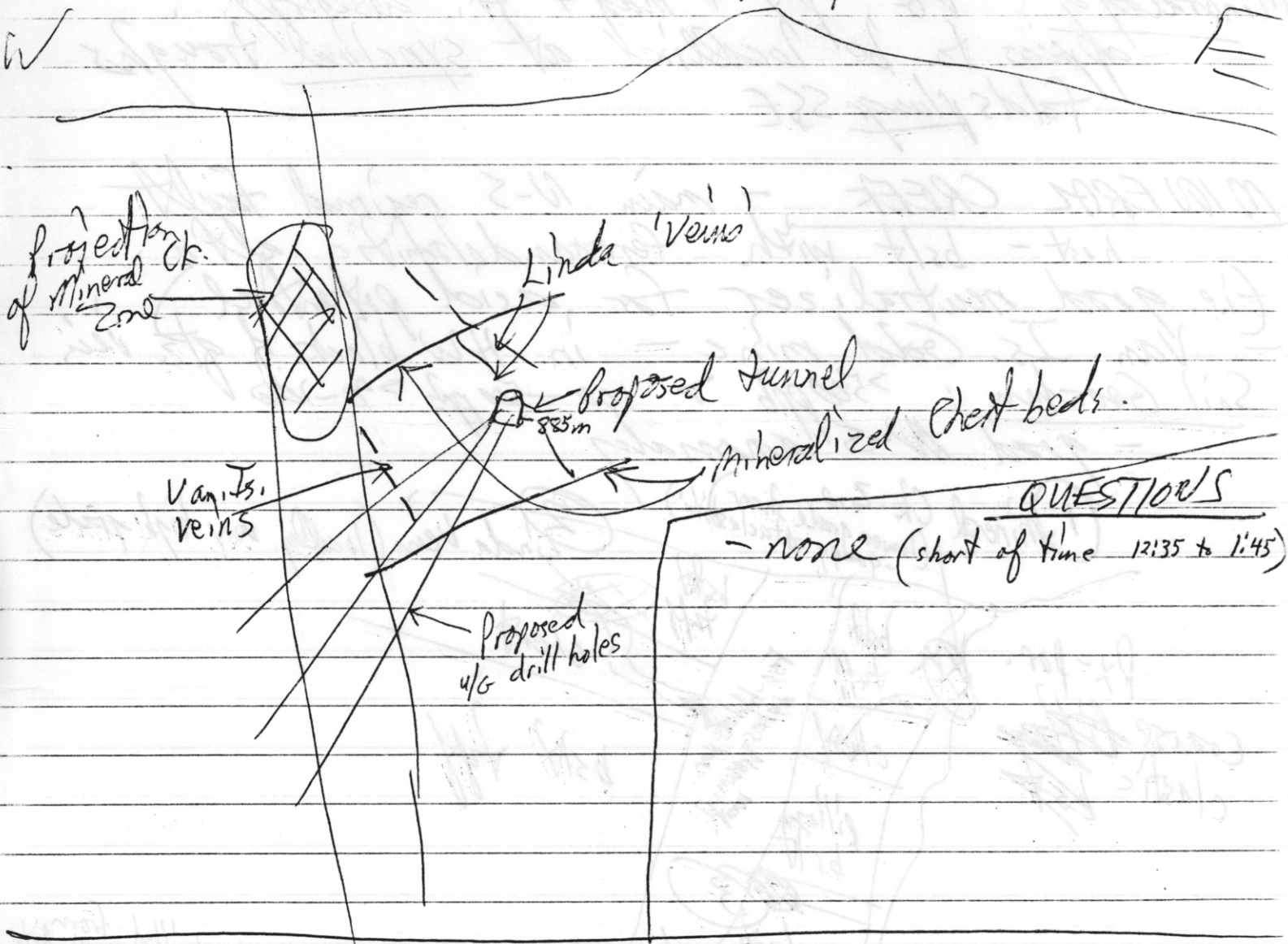
- Longitudinal section: Also - 1500 ft to north - Au-bearing  
incl. 3 interval .54 over 1 m chert

HW rocks: - various gtz ± carb-veinlets

Expl'n Adit: at 180 m in HW - adit to start  
in Yellow Ck. (lots of room for tailings, etc.)  
- will come under Mineral Creek zone

(continued)

McLaughlin Ridge



When did gold come in? Pb isopes (Ann Andrews)  
 → good correlation with other Sicker Gr. deposits ①  
 (cf. HW, Lara, M. Sicker)  
 - cf. - Zaballos ② + ③ Jurassic intrusives  
 Debbie - Regina workings / Rogers Ct. (ie. volcanogeni)  
 = Paleozoic leads ('Sicker') ④  
 - 900 zone ftz veining corrd. with Zaballos age  
 (ie. younger!) → possibly Tertiary  
 - Hb/d-por. dyke post-dates Mineral Ct. zone.

Thanx: Alex Davidson (Minnova)