

PROPERTY FILE

8950N

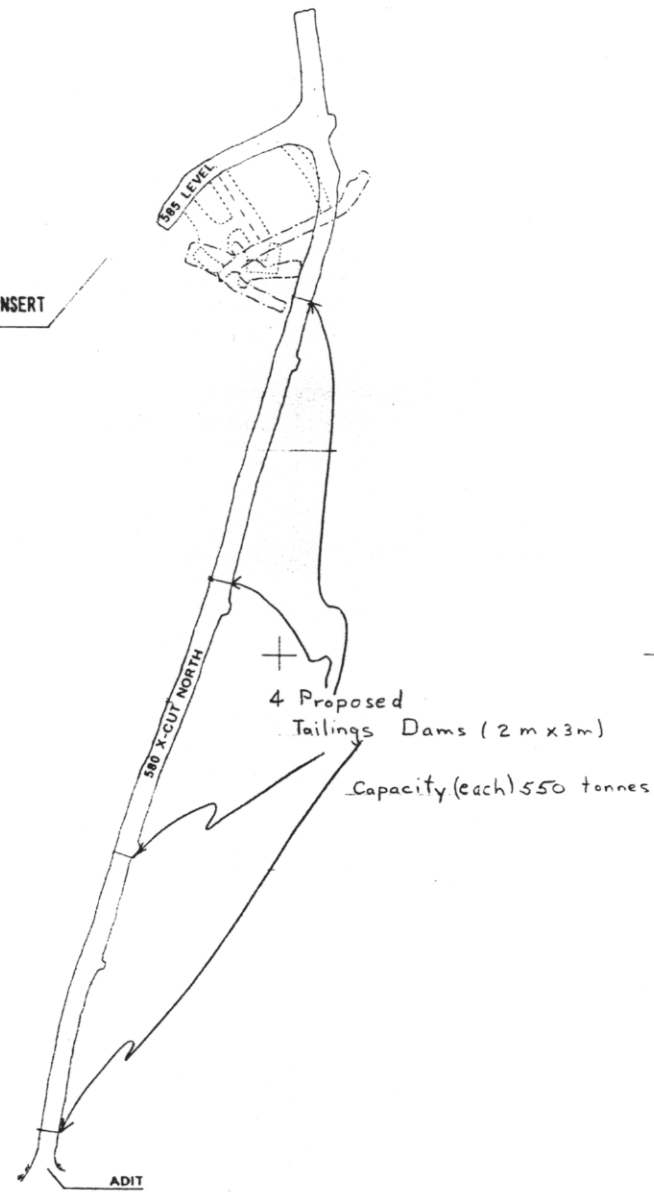
8850N

8750N

8900E

8900E

585 STOPE SEE INSERT

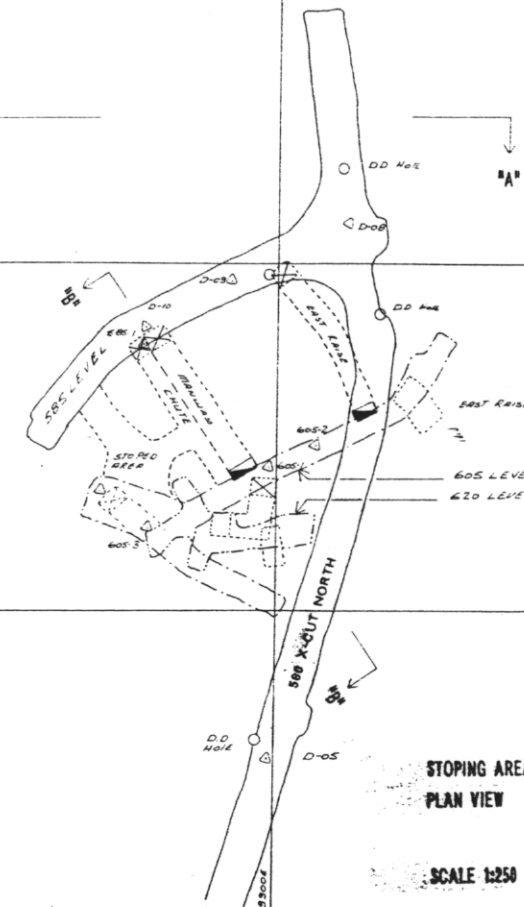


900 ZONE 580 LEVEL
SCALE 1:500

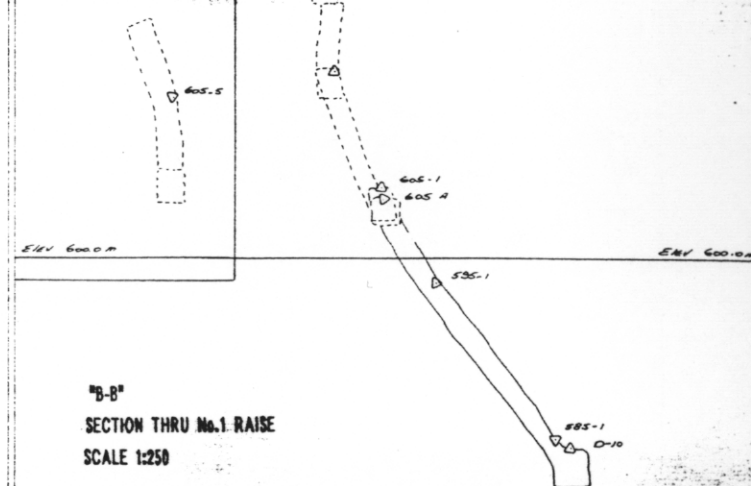
8925N

8900N

8875E



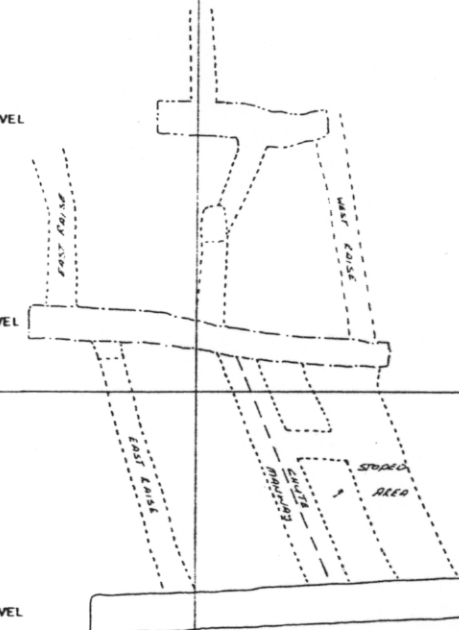
SECTION THRU EAST RAISE



620 LEVEL

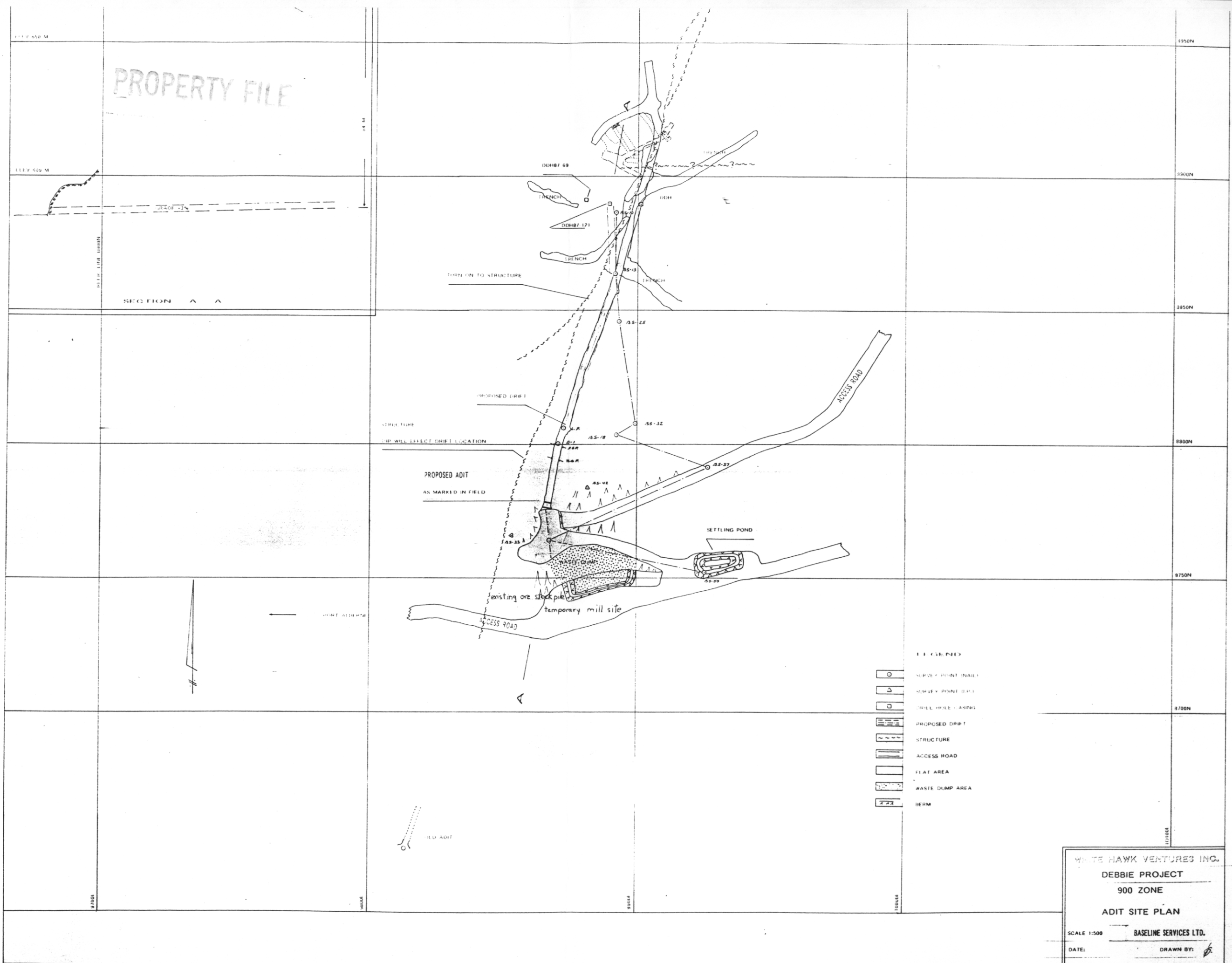
605 LEVEL

585 LEVEL

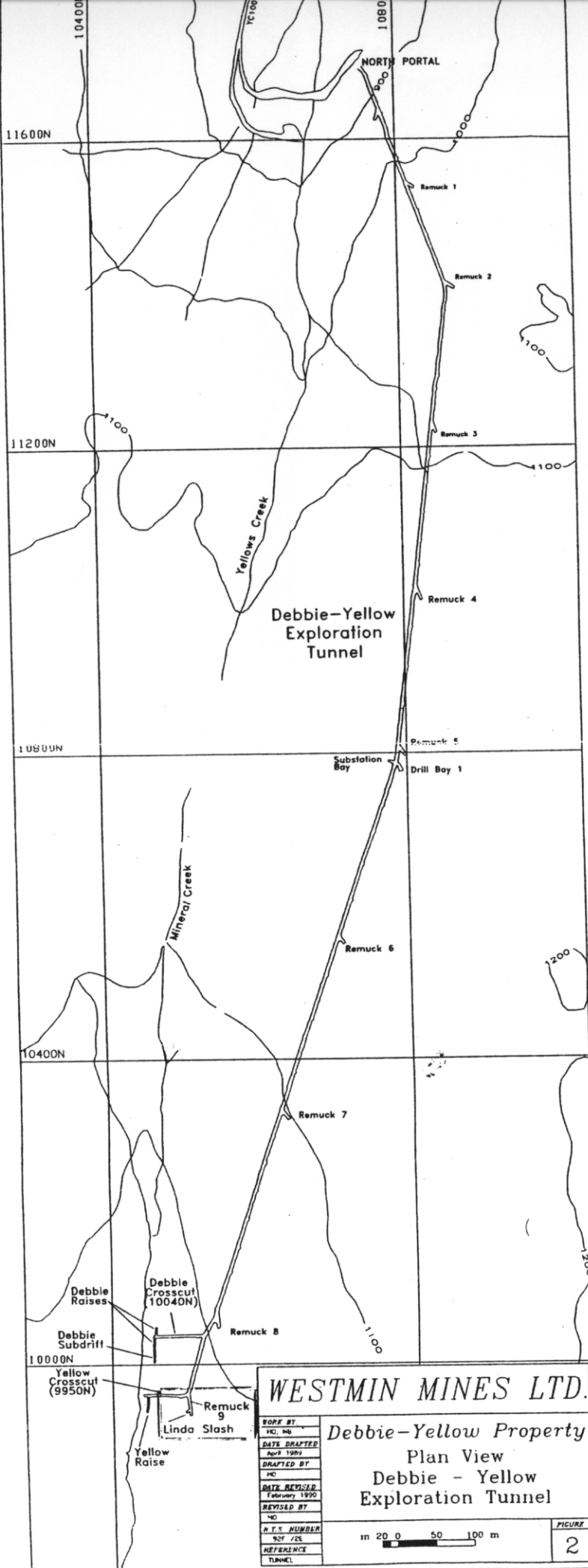


006998

WHITE HAWK VENTURES INC.	
DESIGNED BY: RONALD R. BROWN	APPROVED BY:
DATE:	
DEBBIE PROJECT 900 ZONE	
LANSING SERVICE LTD.	



WHITE HAWK VENTURES INC.
 DEBBIE PROJECT
 900 ZONE
 ADIT SITE PLAN
 SCALE 1:500
 BASELINE SERVICES LTD.
 DATE: _____ DRAWN BY: _____



WESTMIN MINES LTD.

Debbie-Yellow Property
Plan View
Debbie - Yellow
Exploration Tunnel

WORK BY	NO. 44
DATE DRAFTED	April 1989
DRAFTED BY	NO
DATE REVIEWED	February 1990
REVISED BY	NO
D.T.S. NUMBER	951 / 25
REFERENCE	TUNNEL

in 20 0 50 100 m

PICTURE
2

PROPERTY FILE

DEBBIE -
LINDA
ZONE

92 F/2E

cation of new drill holes. The Linda Zone contains three sub-parallel gold-bearing quartz veins. The lower Linda vein was exposed in one backhoe trench where six separate chip samples across the vein structure along a 15.1 metre length averaged 42.17 g/t gold across an average thickness of 1.86 metres. Diamond drilling in this area intersected the vein in three holes.

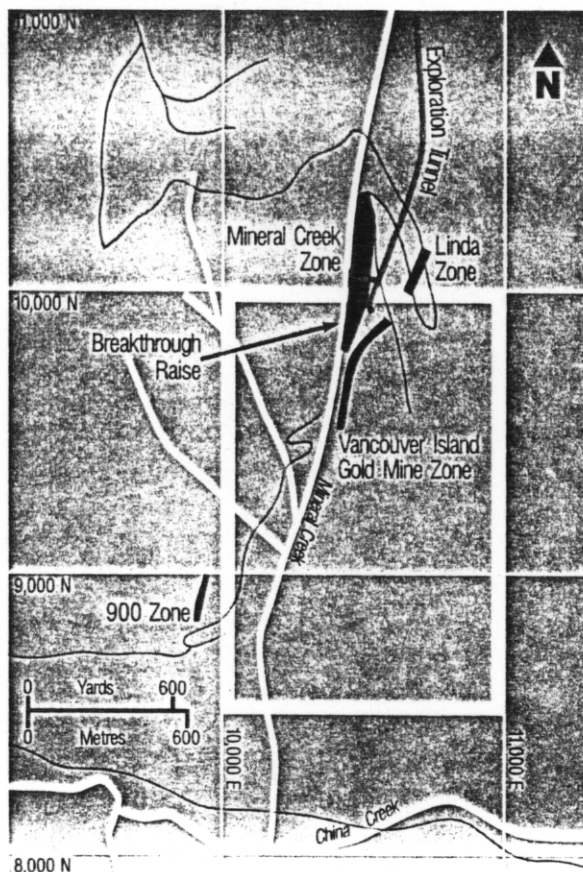
Underground drilling from the Debbie Tunnel tested the Mineral Creek Fault. Trenching in the 900 Zone area identified a parallel structure to the main 900 trend. Diamond drilling in the new area intersected low grade gold, the best of which (DN 203) returned assays of 0.110 g/gold over a length of two metres at regular intervals north of the Mineral Creek Zone. Hole DU 199 intersected an area of quartz-calcite veins which assayed 26.26 g/t gold across a two metre section.

Linda Zone From	To	Length	Au
(m)	(m)	(m)	(g/t)
DM 186	113.8	115.8	2.0
DM 187	155.1	157.4	2.3
DM 188	196.8	200.4	3.6
			4.80
DM 197	34.7	35.2	0.5
DM 198	46.3	47.5	1.2
DM 200	38.3	41.1	2.8
			visible
			gold

Metallurgical sampling of the Mineral Creek Zone was completed in late December and sent to Lakefield Research in Ontario for testing.

	Probable Tonnes	Au (g/t)	Possible Tonnes
900 Zone	28,285	11.66	17,482
Linda Zone	41,164	9.15	49,382
*Mineral Creek Zone	<u>99,443</u>	<u>3.02</u>	<u>256,303</u>
	168,892	5.97	323,167
*Does not include Yellow Claim			

Geological mineral inventory by the traditional sectional method has been



- Debbie Yellow Project
- Yellow Claim
 - Gold Zones
 - Roads
 - Exploration Tunnel



completed, but does not include assays from the 1989 program. An arbitrary minimum cut-off grade of 1.71 g/t was applied with all narrow intersections diluted to two metres. The 1990 program will be largely directed at diamond drill evaluation of the known gold zones.

Clearwater, Quebec

Trenching in the L'Eau Claire area of the Clearwater Property established the strike and dip of gold-bearing quartz-calcite-tourmaline veins intersected in previous

PROPERTY FILE

From ACME ANALYTICAL LABORATORIES LTD. 852 E. HASTINGS ST. VANCOUVER BC V6A 1R6 PHONE(604)253-3158 FAX(604)253-1716 @ CSV TEXT FORMAT

To B.C. Ministry of Energy & Mines

Acme file # A003863 Page 1 Received: OCT 2 2000 * 16 samples in this disk file

ELEMENT	Mo SAMPLES	Cu ppm	Pb ppm	Zn ppm	Ag ppb	Ni ppm	Co ppm	Mn ppm	Fe %	As ppm	U ppm	Au ppb	Th ppm	Sr ppm	Cd ppm	Sb ppm	Bi ppm	V ppm	Ca %	P %	La ppm	Cr ppm	Mg %	Ba ppm	Ti %	B ppm	Al %	Nb %	K %	W ppm	Sc ppm	Tl ppm	S ppm	Hg ppb	Se ppm	Te ppm	Ga ppm	Sample
B.170575	2.04	105.67	4.63	57	1602	69.8	27.1	739	4.23	523	< 1	1207.6	0.4	272.7	0.15	1.95	0.94	14	6.79	0.101	3.9	38.8	1.84	94.3	0.001	9	0.63	0.008	0.24	2.4	8.4	0.03	2.67	81	0.6	0.55	1.4	15
RE B.1705	2	105.67	4.5	58.7	1472	69.8	27.6	748	4.26	525.7	< 1	1231.9	0.4	288.3	0.14	1.92	0.78	13	6.65	0.101	3.8	37.5	1.86	89.8	0.001	9	0.61	0.007	0.23	2.3	8.4	0.03	2.64	52	0.5	0.51	1.3	15
STANDARD	13.6	121.65	32.2	155.2	257	34.3	11.4	803	3.02	55	19	190	3.4	27	10.06	9.28	10.6	75	0.51	0.094	15.6	153.9	0.59	170.1	0.09	2	1.66	0.026	0.15	6.7	2.9	1.68	0.02	240	2.2	1.97	5.6	15

PROPERTY FILE

Acme Analytical Laboratories Ltd.

852 E. Hastings St., Vancouver, B.C.

V6A 1R6 Phone: 253-3158

SAMPLE: **B** **Nº 170575**Date Sept 20 1990Location DRILL - CASEDrill Hole FE 211EFootage SAVR 15m N. 213Remarks from @ 160'; 70

Assay For: Cu, Pb, Zn, Ag, Au, Ni, Mo, W, As

Other 0.1 m trace of U andRock Geochem ☐ from ☐ ICP