

604633 corrected
 Paradise Cr Pluton ~~70~~ FZBWA K-Arbort. sampled on logging rd west of Paradise Crk.

Vance 573
 650m from
 from junction
 Paradise Cr
 Pluton
 F-Tz.

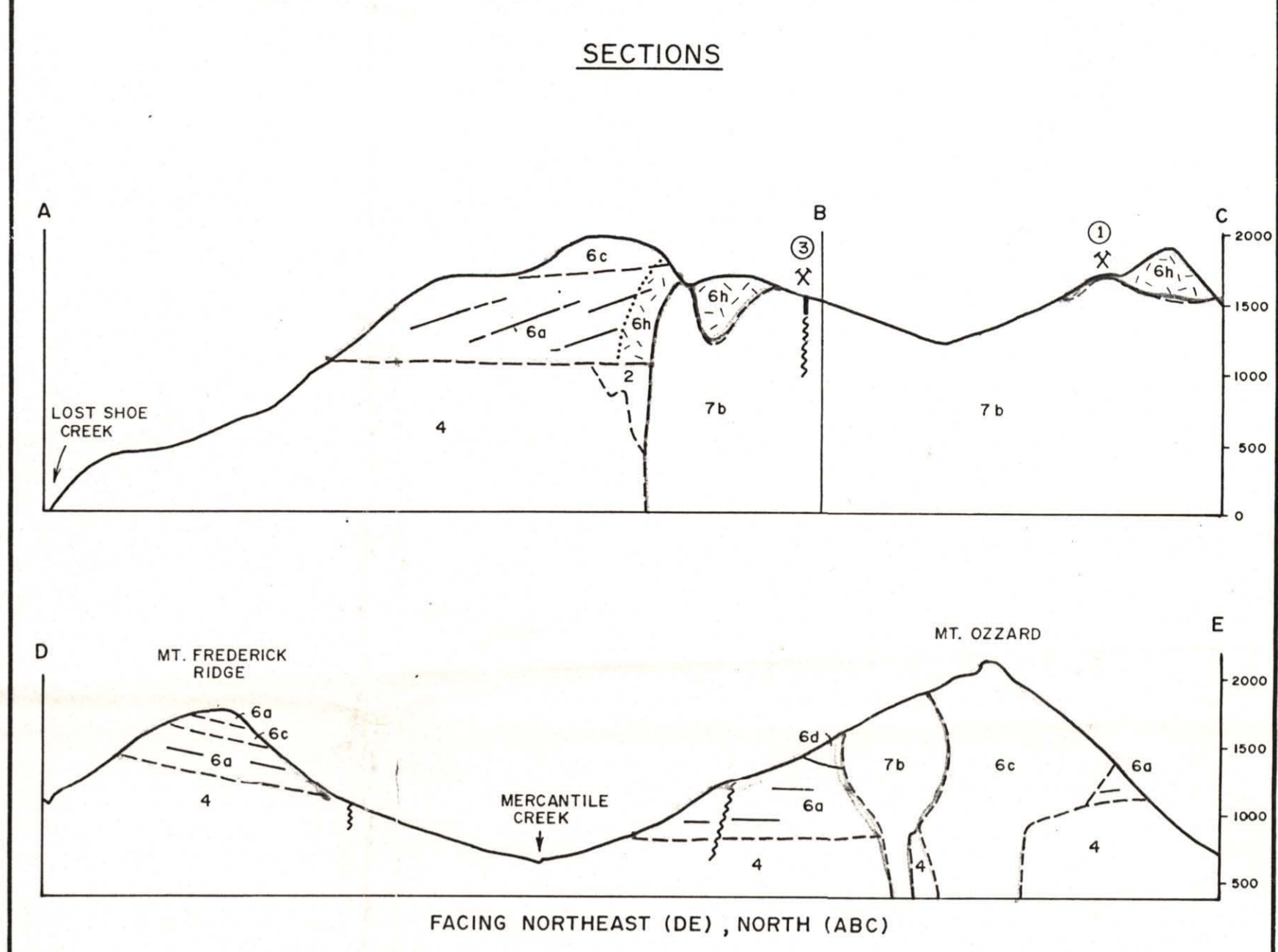
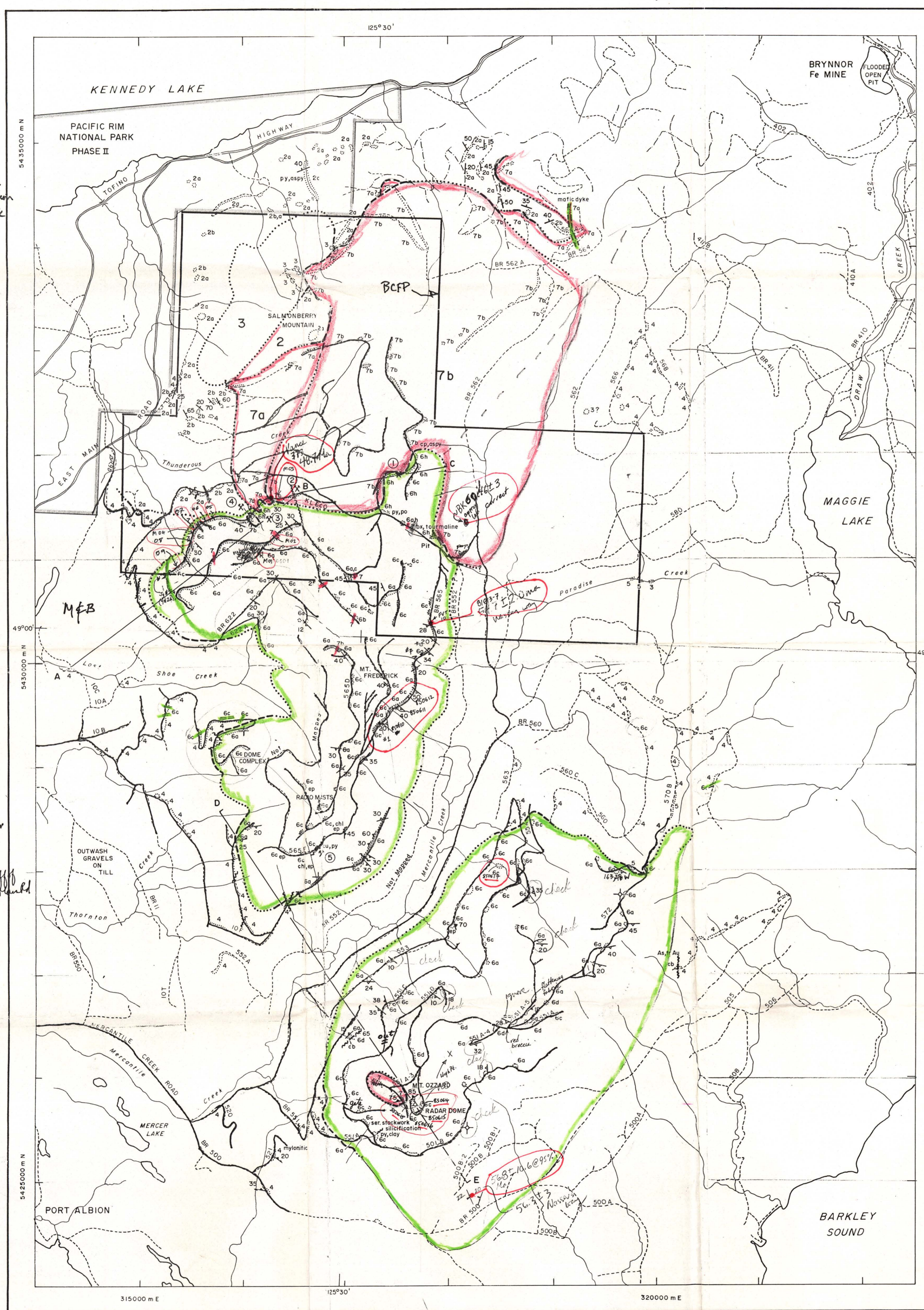
v

or

6b

6a, 6c

(1) Mercantile
 (2) BR 515
 (3) KL640 off East Road



LEGEND

THUNDEROUS CREEK PLUTON: CATFACE INTRUSIONS

- 7b Biotite quartz monzonite; quartz porphyritic to equigranular fine grained quartz-plag. porphyritic; xenolithic border phase
- 7a Hornblende granodiorite (possible 5?)

FRED VOLCANICS

- 6h Dark grey hornfels (adjacent to 7)
- 6d Coarse greenish volcanic breccia; includes clasts of 6a
- 6c Aphanitic to fine grained andesite and dacite: flows, sills, domes, dykes
- 6b Unwelded ash flow tuff (dacite-rhyolite)
- 6a Weakly to strongly welded ash flow tuff (dacite-rhyolite)

ISLAND INTRUSIONS

- 5 Hornblende granodiorite

WESTCOAST COMPLEX

- 4 Diorite, quartz diorite; leuco-veined, agmatitic in places

BONANZA VOLCANICS

- 3 Andesitic tuff

VANCOUVER GROUP - QUATSINO FORMATION

- 2b Banded calc-silicate; skarned siltstone (equiv. to Farson Bay Fm.?)
- 2a Recryst. limestone, marble, skarn

KARMUTSEN FORMATION

- 1 Basalt - not seen

Geological Boundary: defined, approximate, assumed

FAULT

BEDDING

EUTAXITIC FOLIATION: inclined, horizontal

FLOW FABRIC

TECTONIC FOLIATION

QUARTZ VEIN(S) IN FAULT, FRACTURE ZONE

QUARTZ VEIN(S)

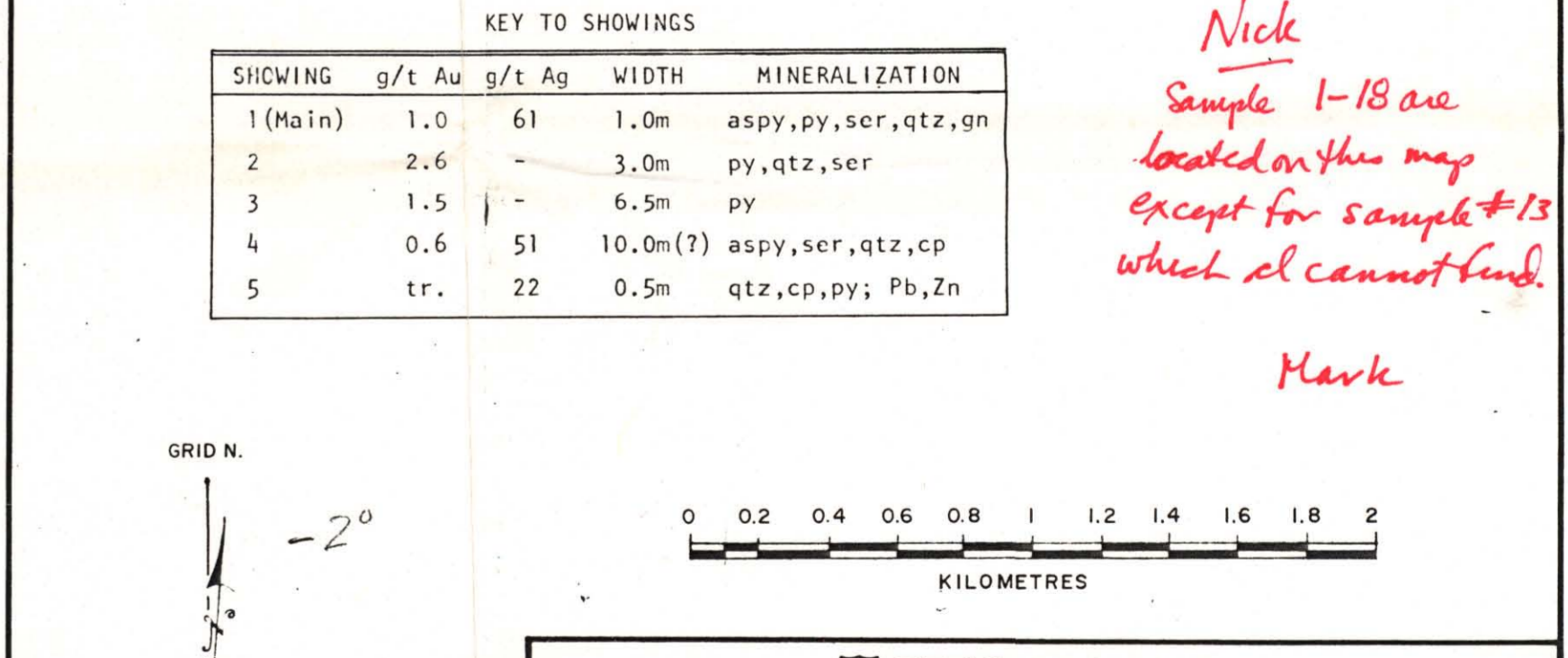
SHOWING, WITH NUMBER

ch1 - chlorite
 ep - epidote
 ser - sericitisation
 cb - carbonatised
 py - pyrite
 cp - chalcopyrite
 aspy - arsenopyrite
 gn - galena

Claims Boundary
 MOWGLI 1, 2 & 6
 Park Boundary

KEY TO SHOWINGS

SHOWING	g/t Au	g/t Ag	WIDTH	MINERALIZATION
1 (Main)	1.0	61	1.0m	aspy, py, ser, qtz, gn
2	2.6	-	3.0m	py, qtz, ser
3	1.5	-	6.5m	py
4	0.6	51	10.0m(?)	aspy, ser, qtz, cp
5	tr.	22	0.5m	qtz, cp, py; Pb, Zn



BP Minerals Limited

PRECIOUS METAL RECONNAISSANCE - B.C.

GEOLOGY OF TERTIARY VOLCANIC-PLUTONIC SUITE KENNEDY LAKE - VANCOUVER ISLAND

SCALE 1:20,000

DWG No. NTS 92C/13,14,F/3,4

DATE JUNE 1982

PROJ. 991

FIG.

To accompany report:

MAPPING BY: B. Marten June 1982
 N. Humphries,
 J. Bedard 1981,
 Mowgli Claims

2/17/89
 Nick
 Sample 1-18 are located on this map except for sample #13 which I cannot find.

Mark

Nick