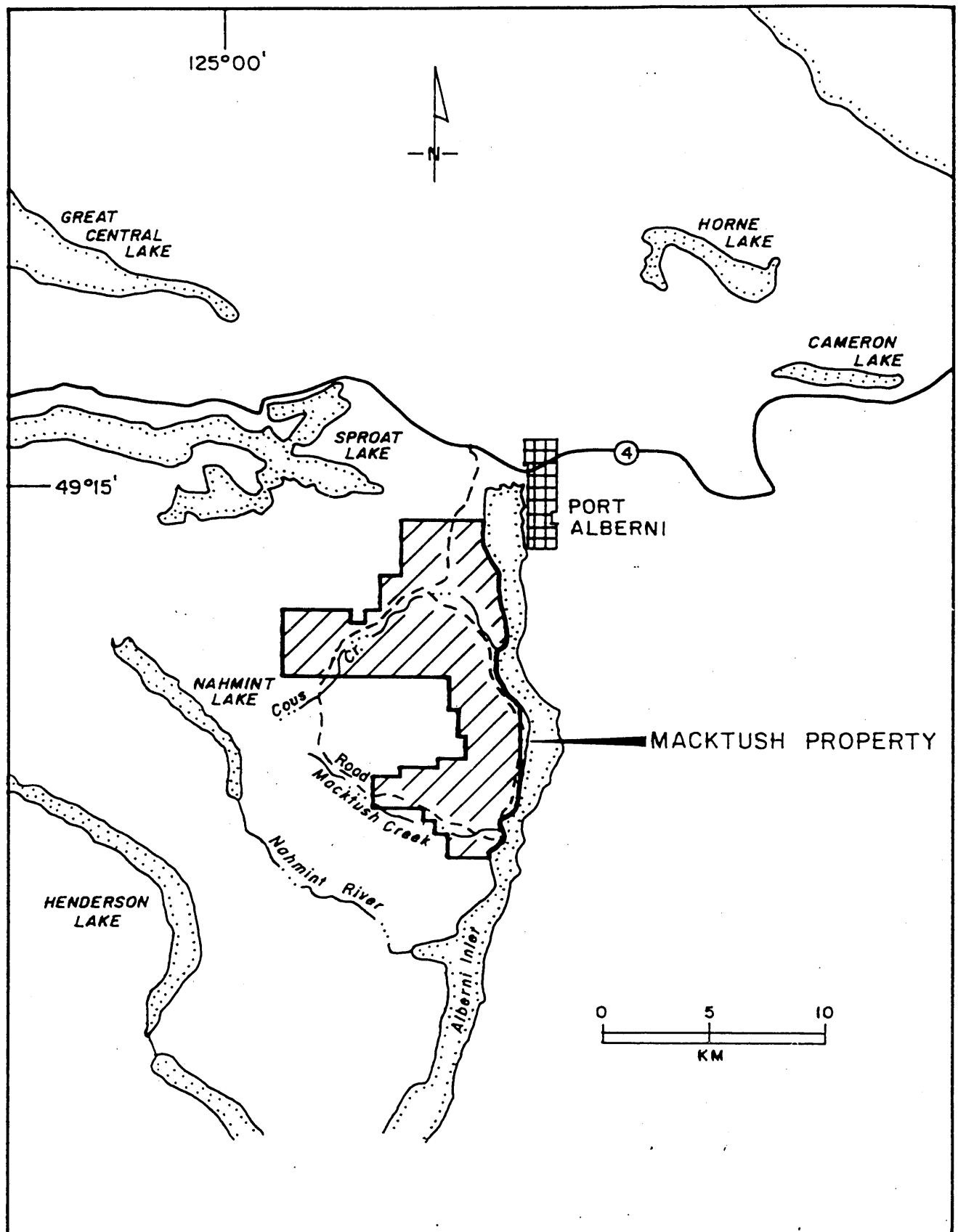


**FIGURE 1 - LOCATION**

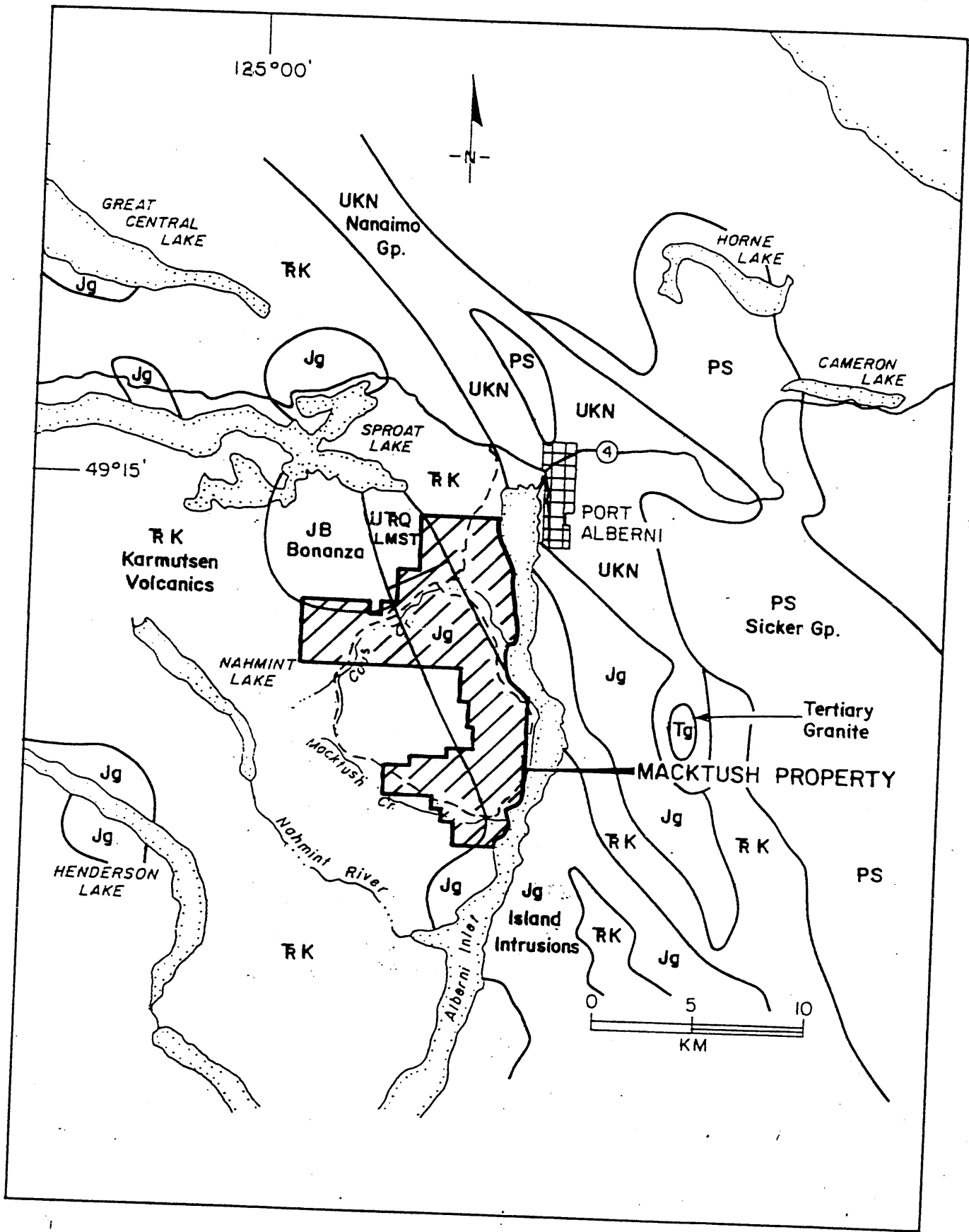
0 100 200 300 400  
Scale - Kilometres

042F 017

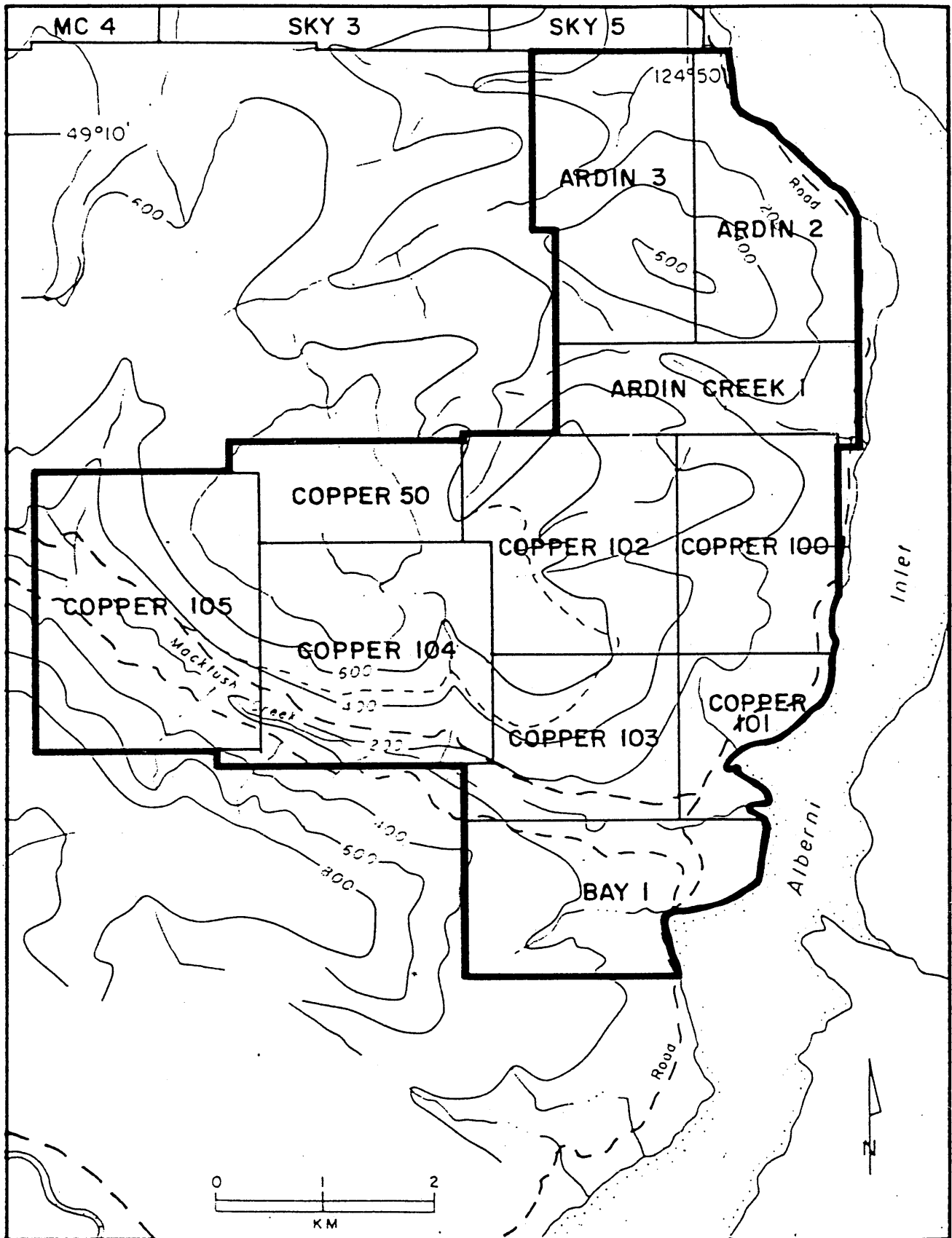
PROPERTY FILE 006644



**FIGURE 2 - PROPERTY LOCATION**



**FIGURE 3 - REGIONAL GEOLOGY**  
 (After Muller and Carson, 1969 and Carter 1989)



**FIGURE 4A -  
ARDIN, COPPER AND BAY MINERAL CLAIMS**

PROPERTY FILE

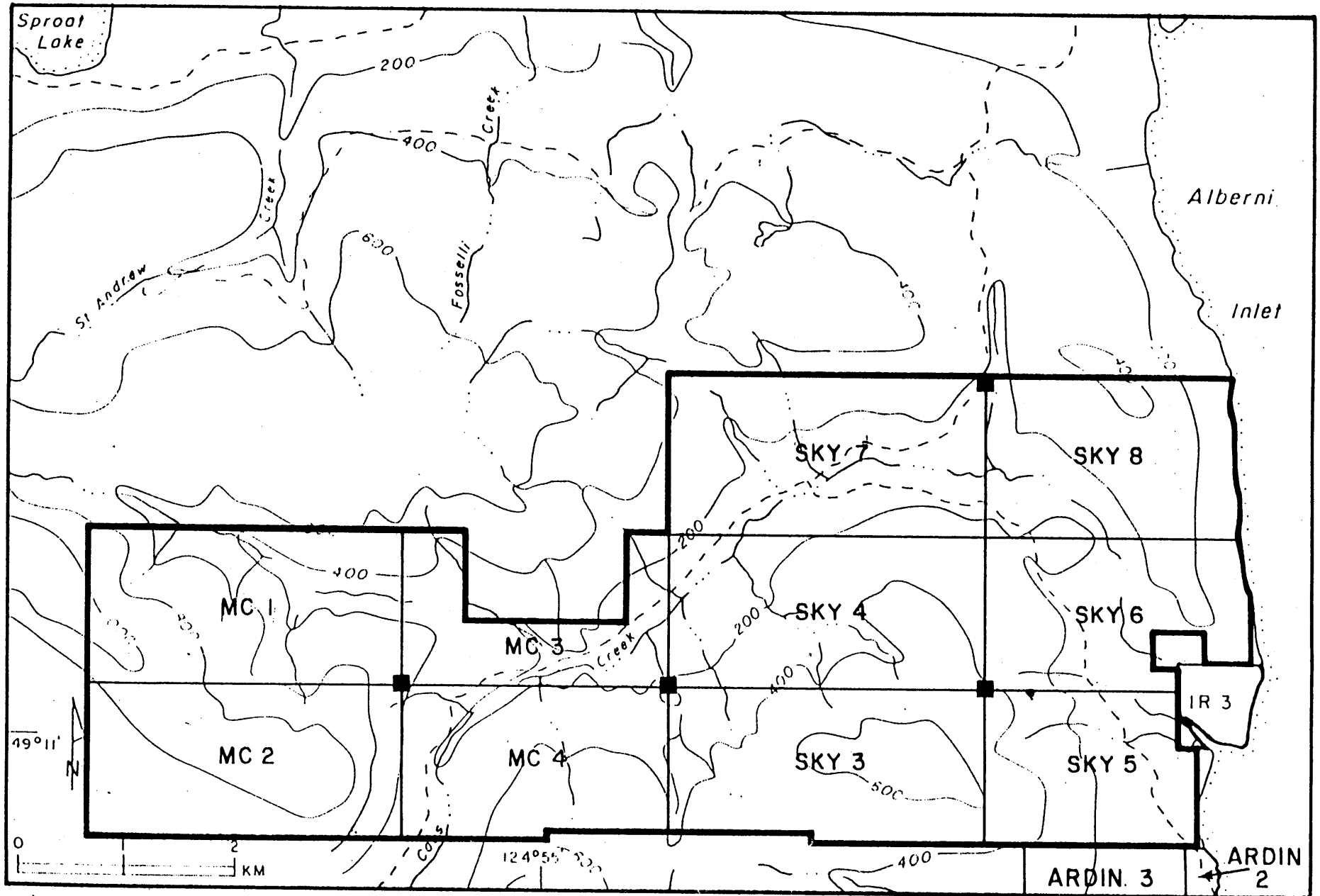
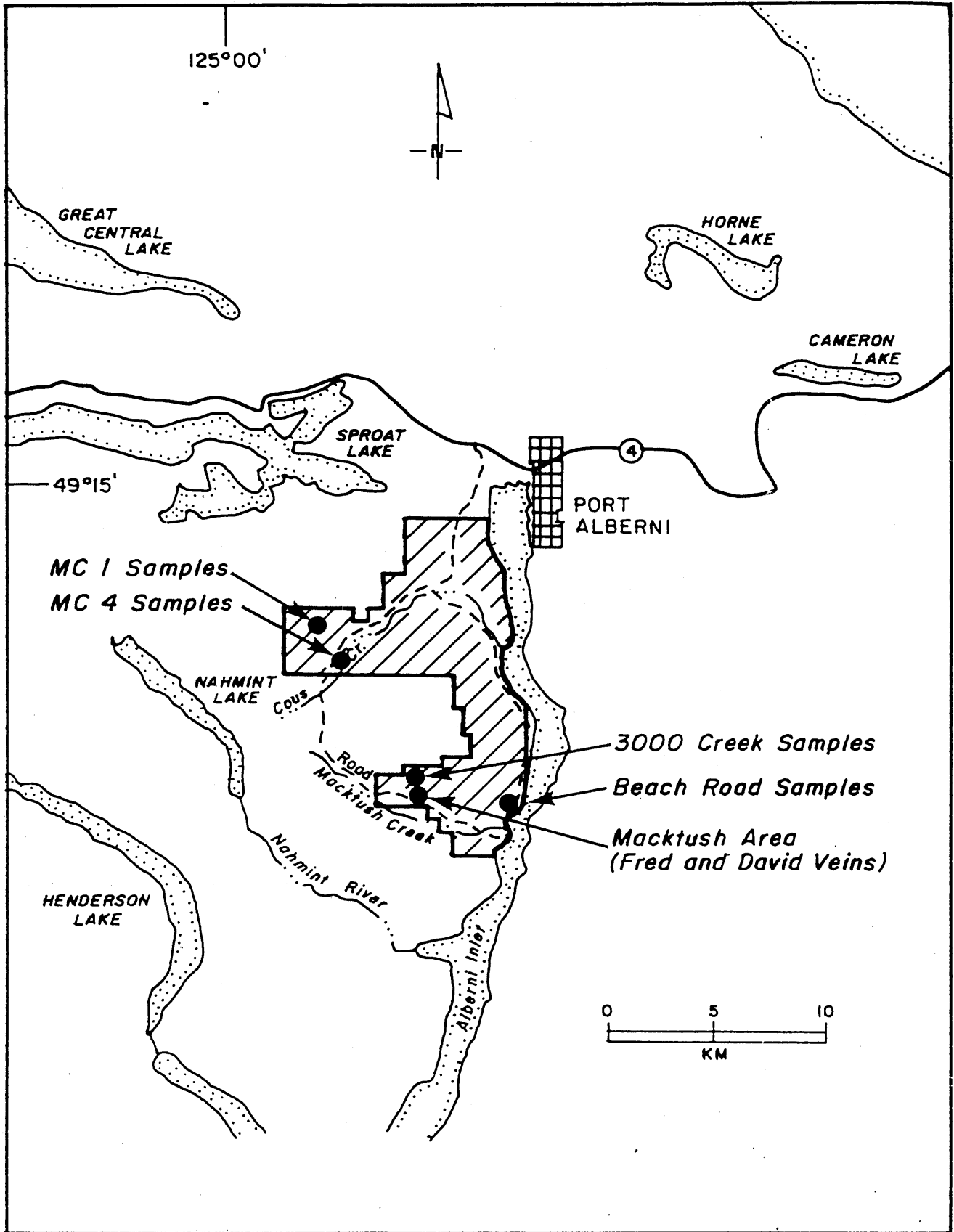
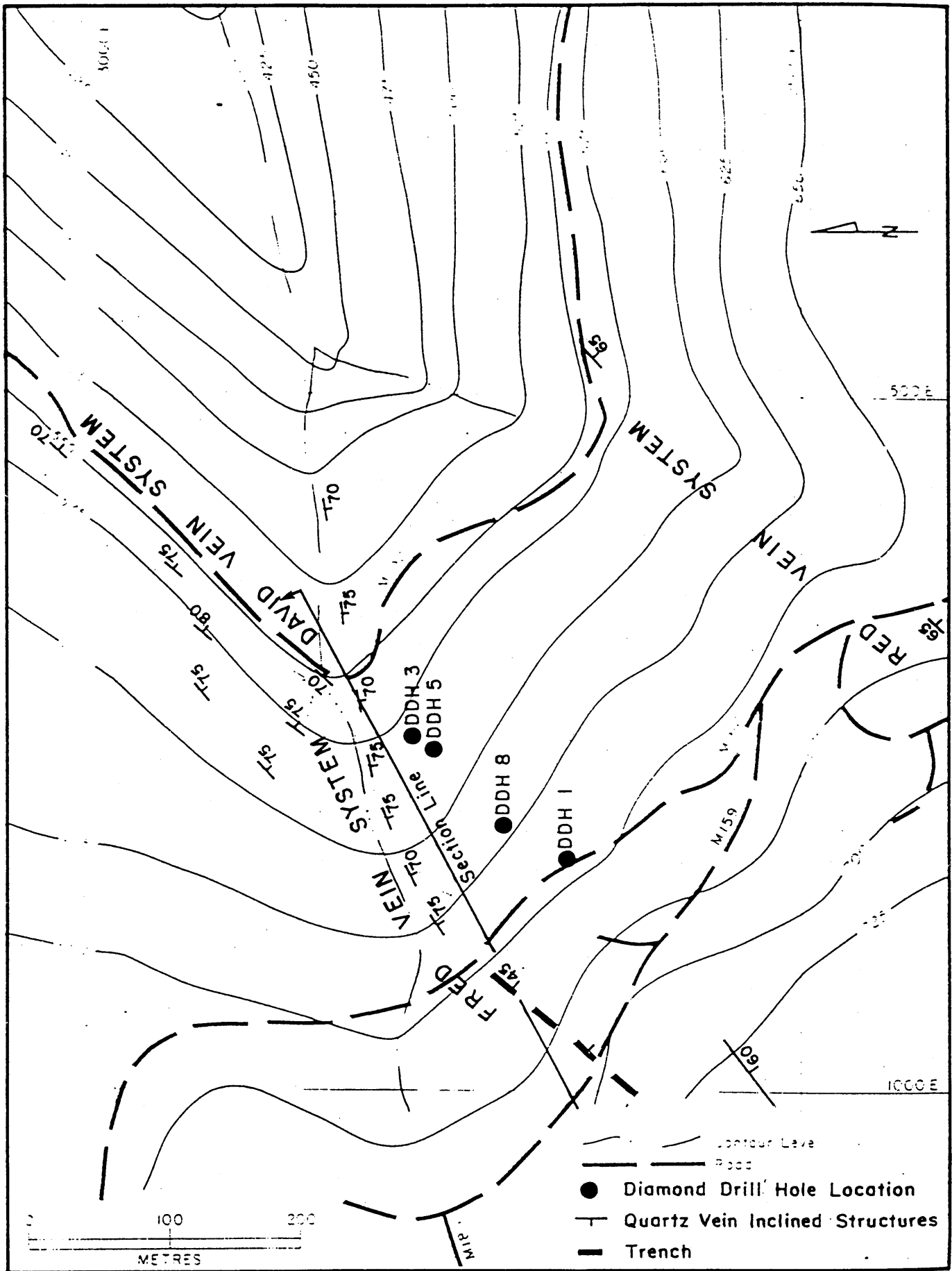


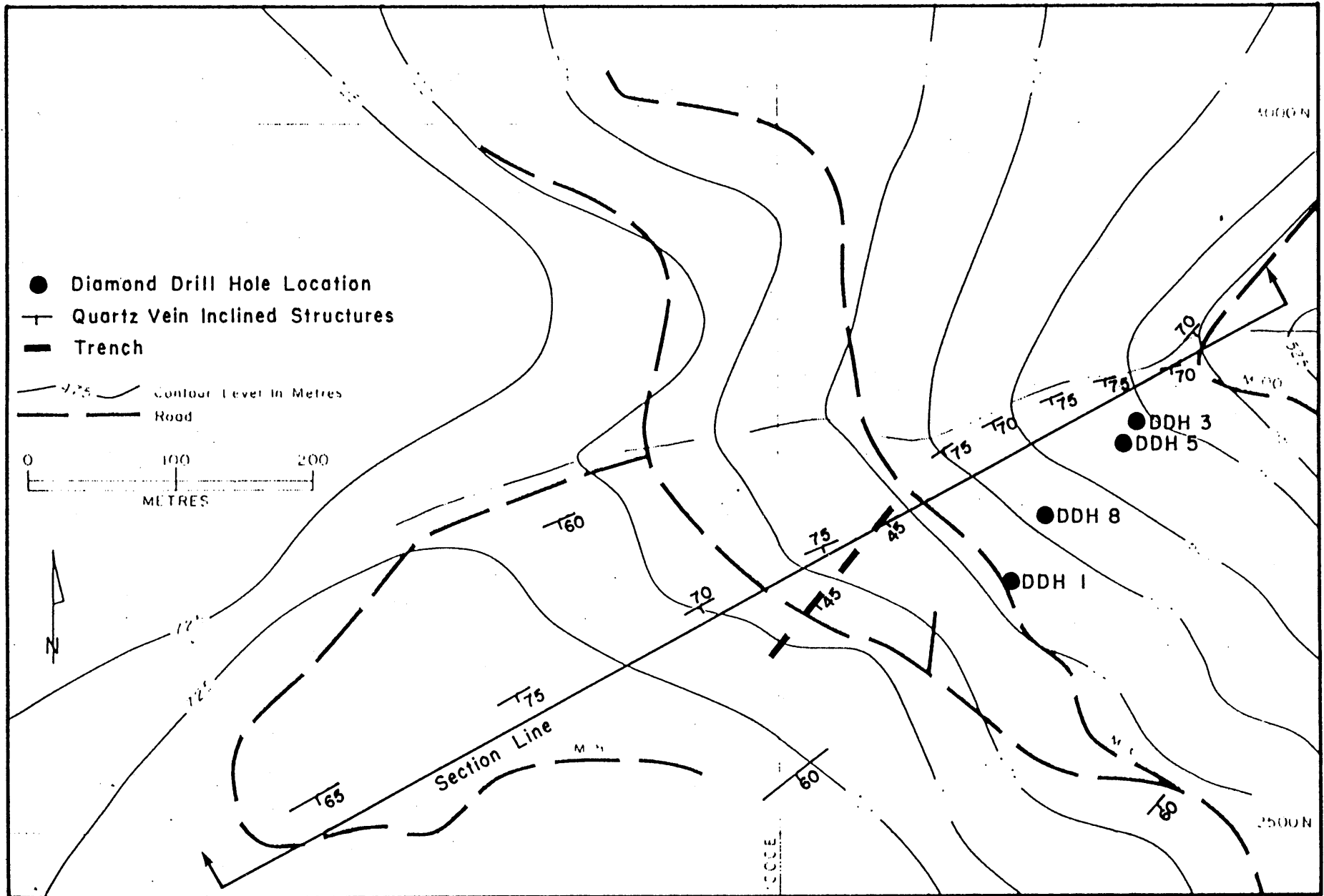
FIGURE 4B - SKY AND MC MINERAL CLAIMS



**FIGURE 5 -  
SAMPLING AREAS - 1996 FIELD PROGRAM**

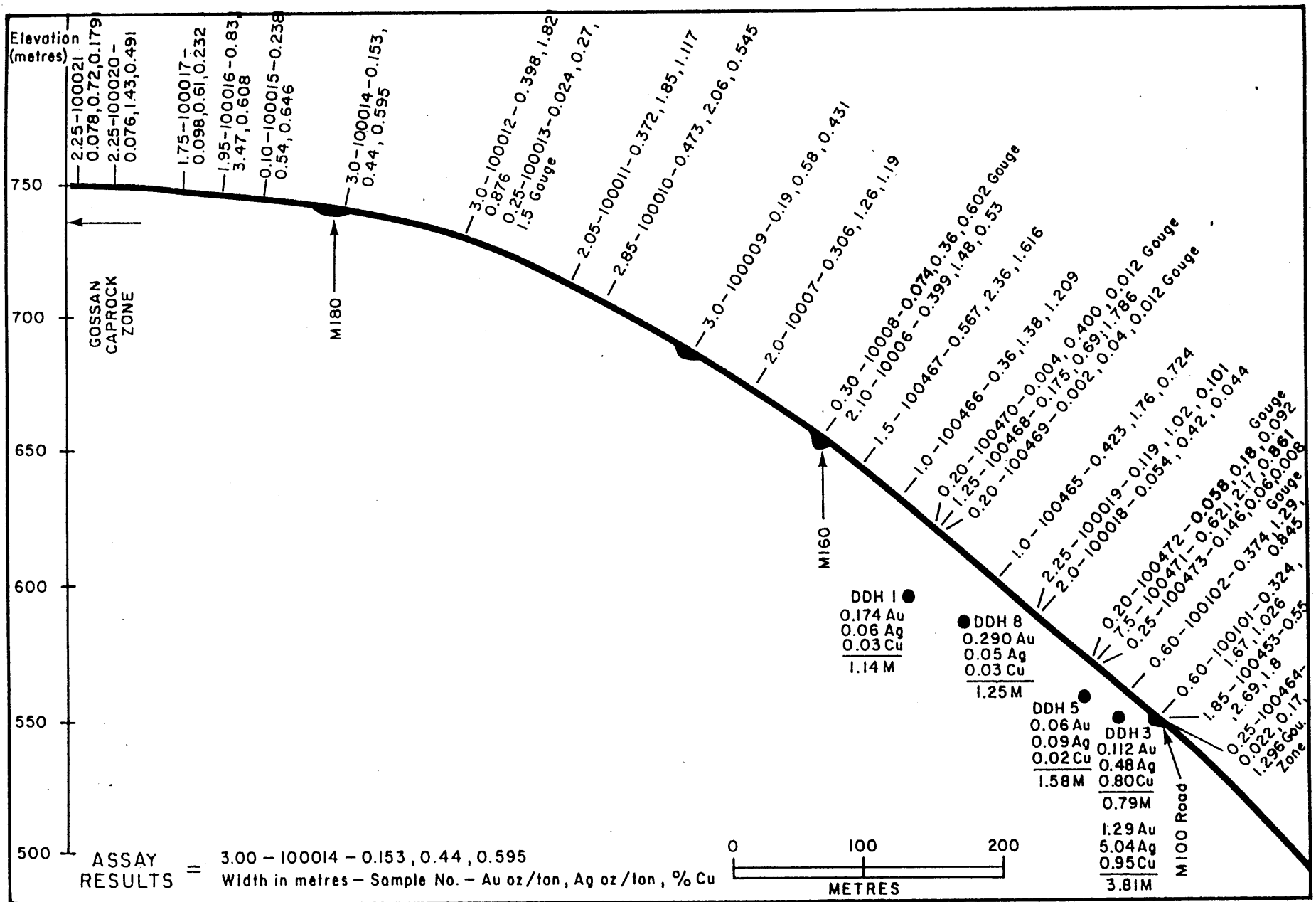


**FIGURE 6 - FRED, DAVID AND RED VEIN LOCATIONS**

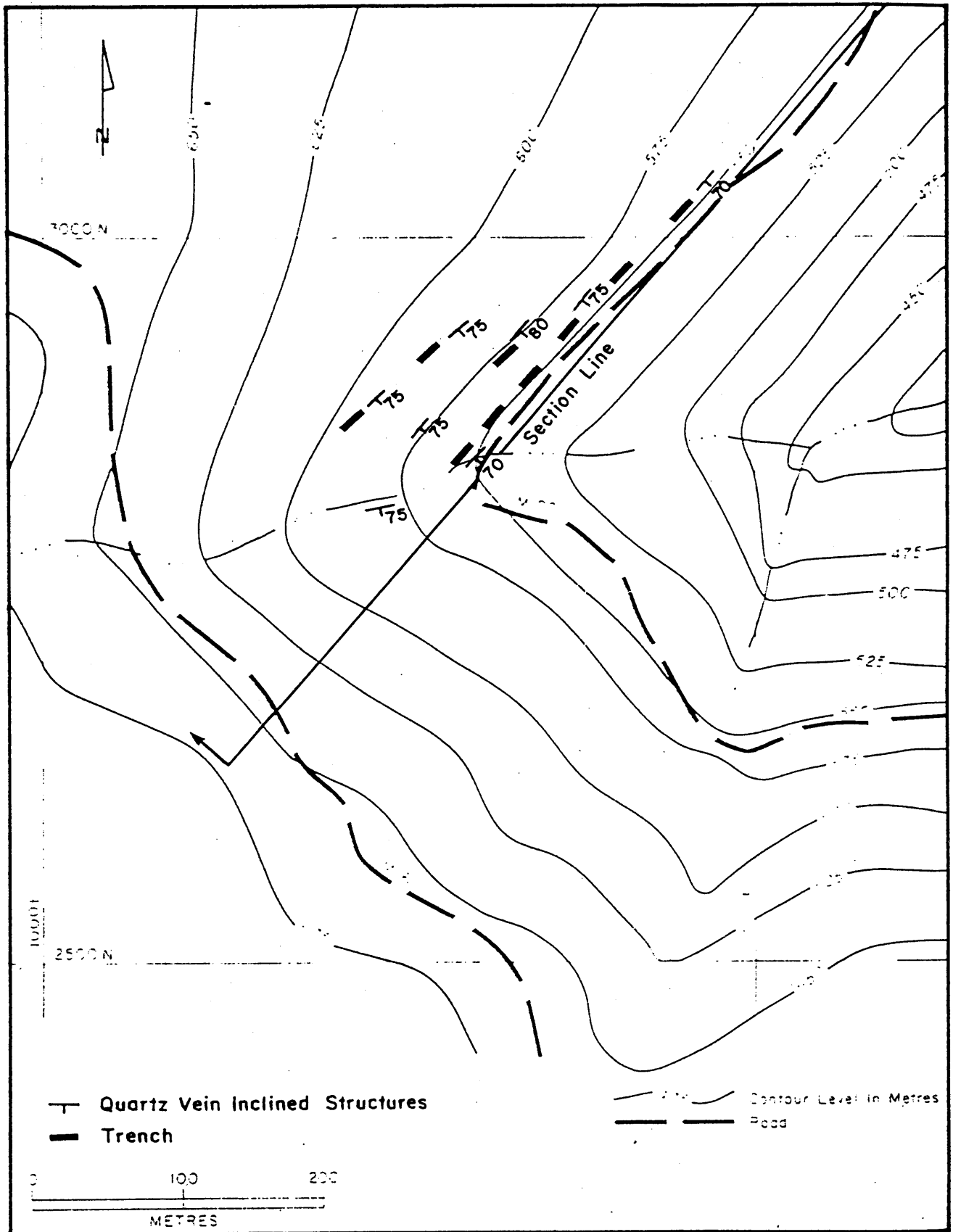


**FIGURE 7 - SECTION LINE AND SAMPLE AREAS - FRED VEIN**

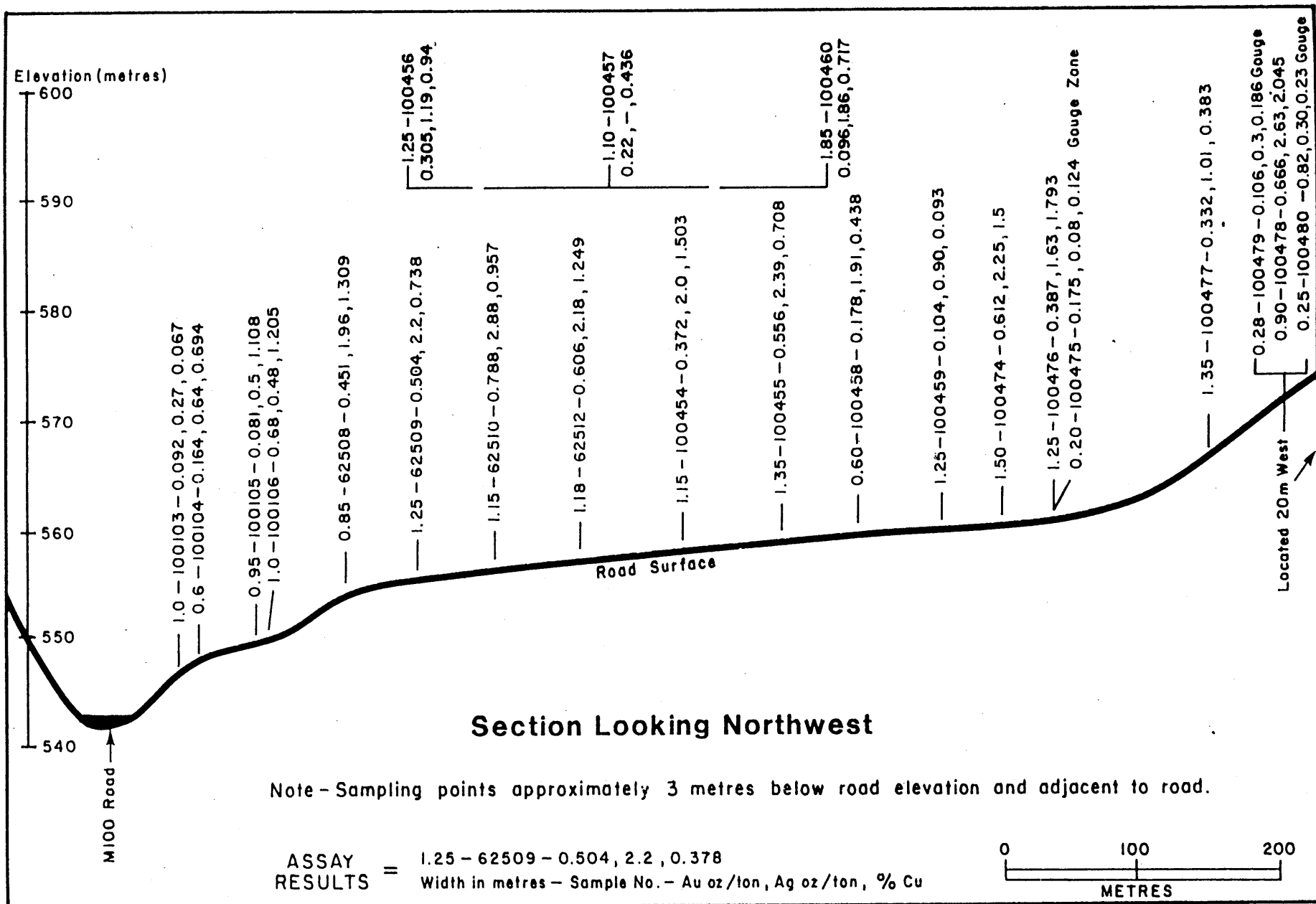




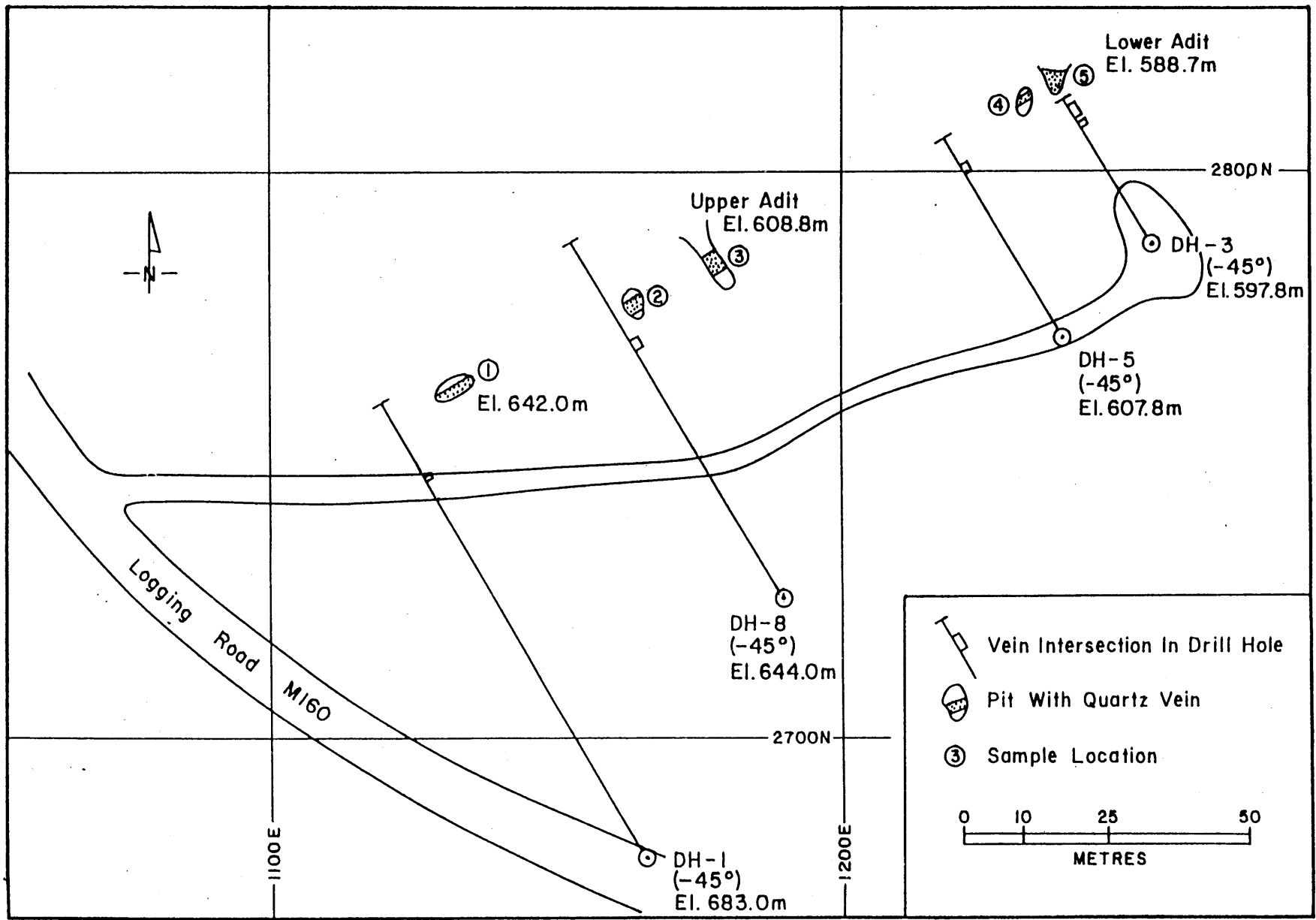
**FIGURE 8 - FRED VEIN SURFACE SAMPLING PROGRAM**



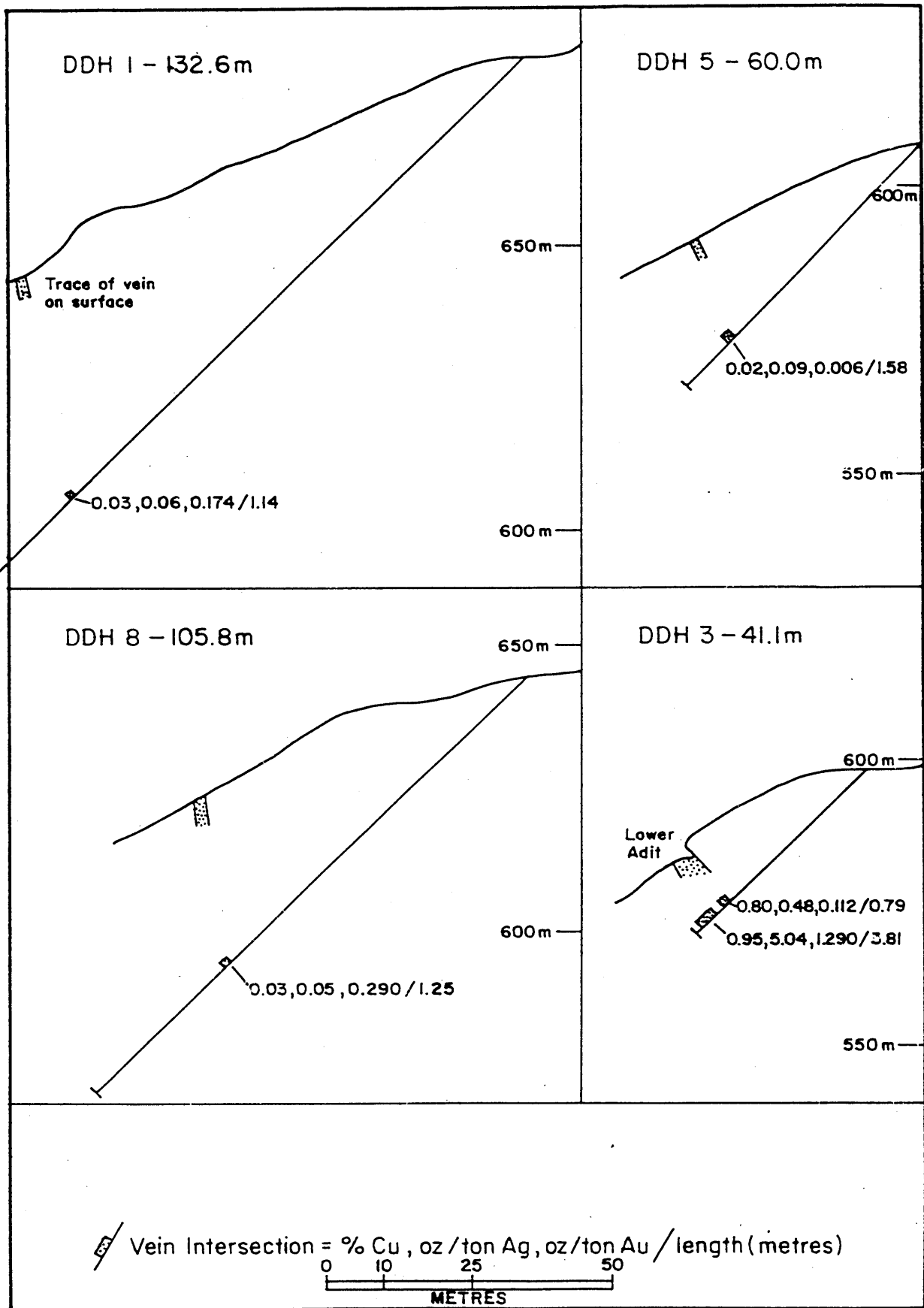
**FIGURE 9 -  
SECTION LINE & TEST PITS - DAVID & PARALLEL VEIN**



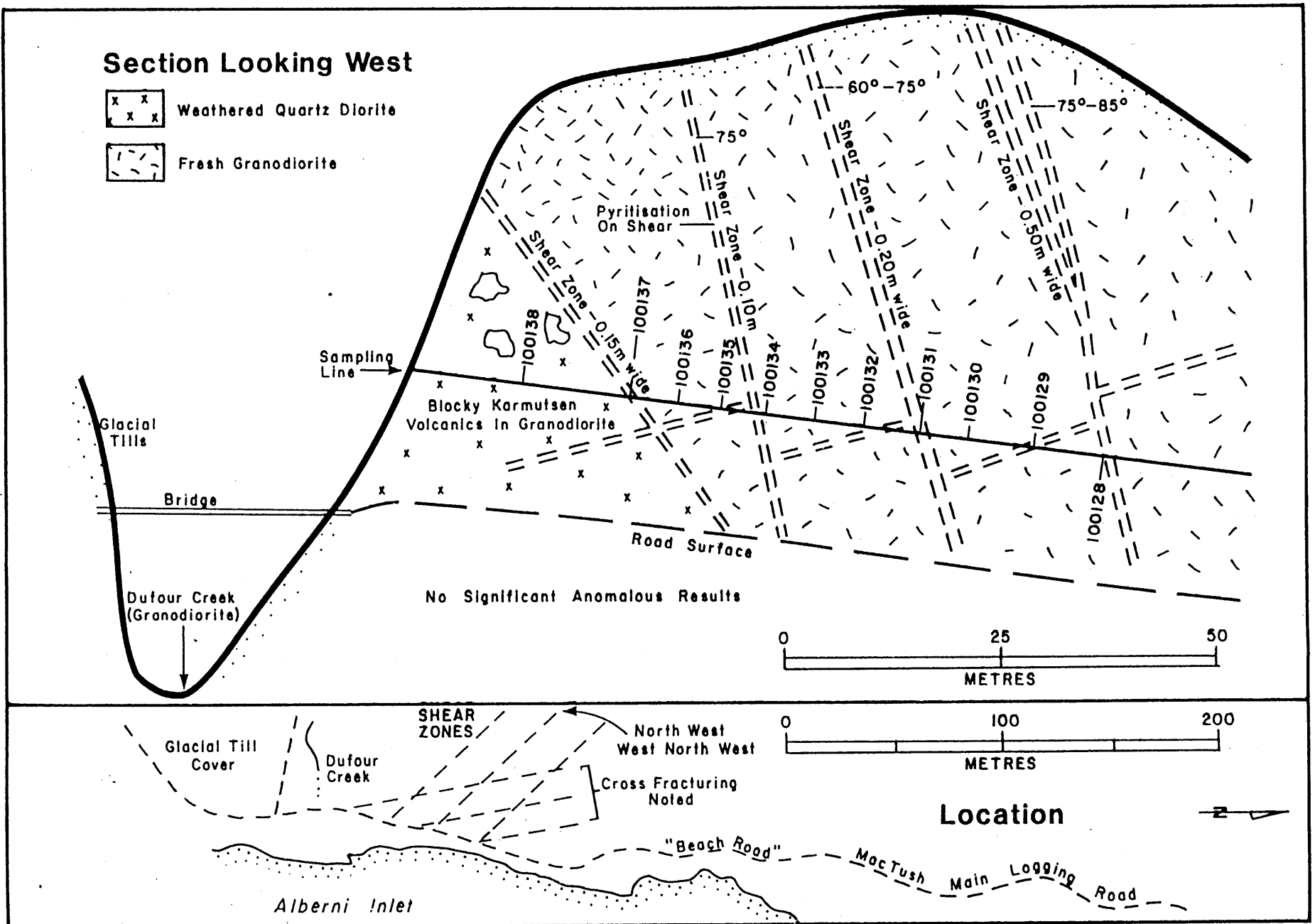
**FIGURE 10 - DAVID VEIN ASSAY RESULTS**



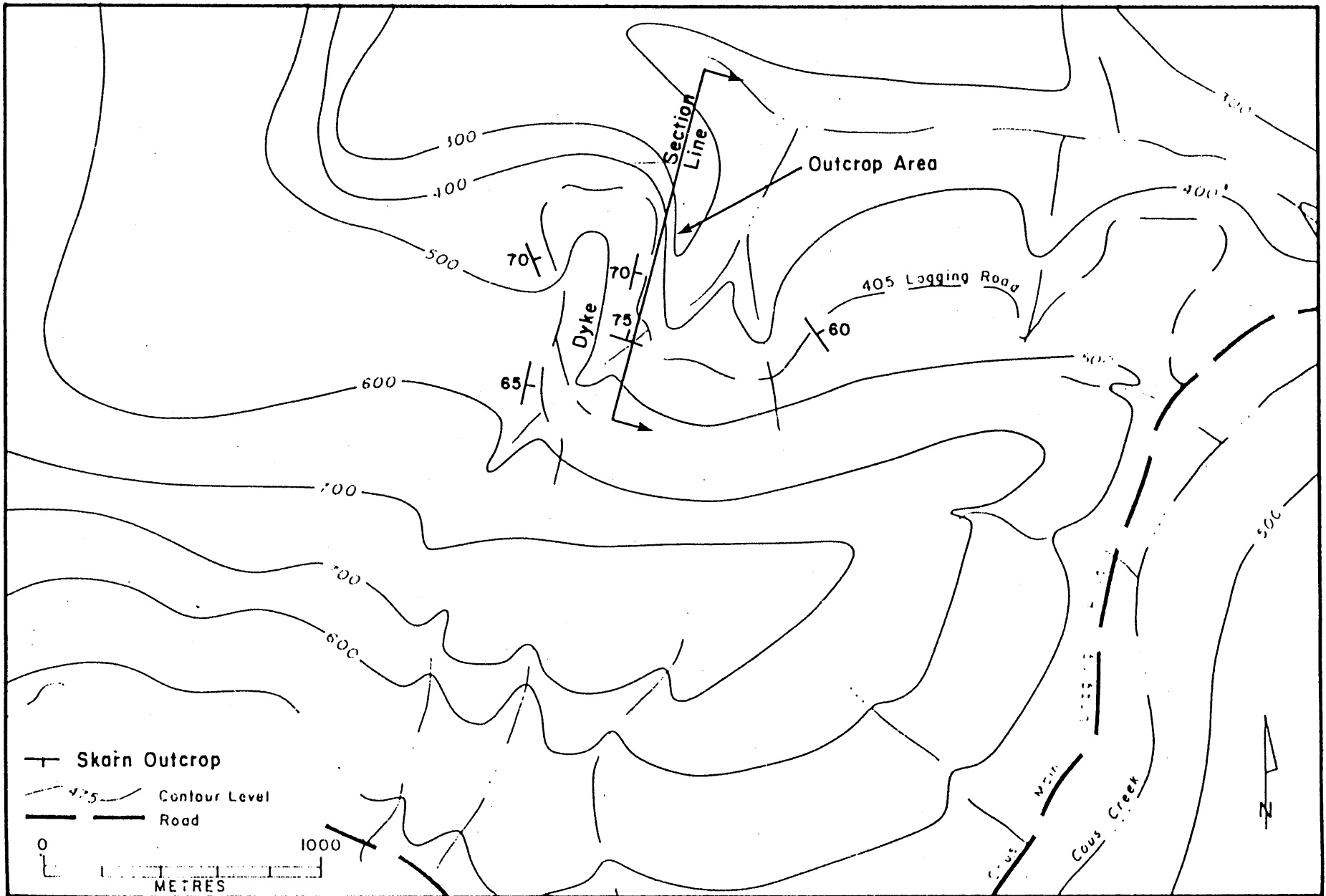
**FIGURE 11 - DIAMOND DRILL HOLE PLAN - FRED VEIN**



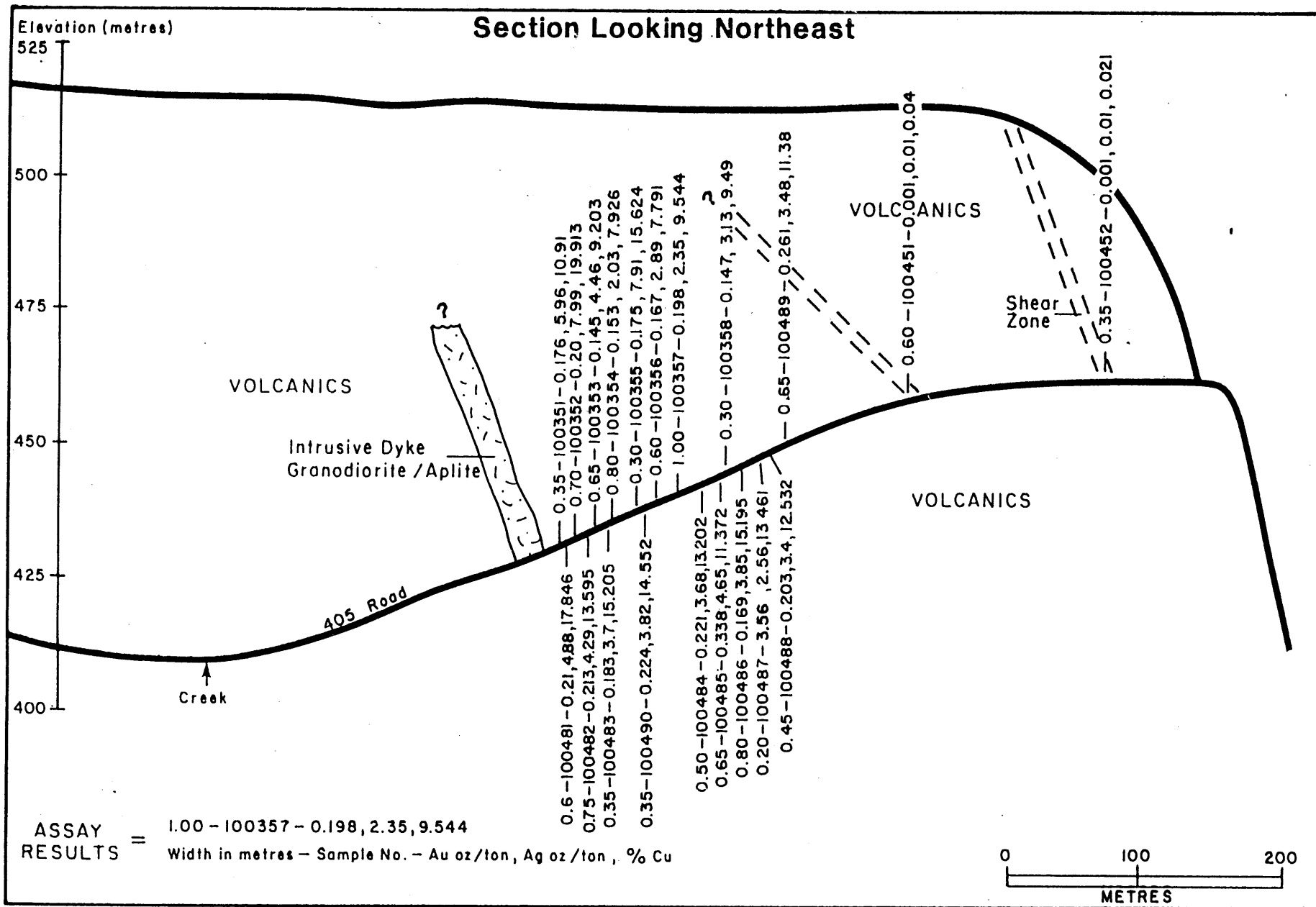
**FIGURE 12 - DIAMOND DRILL CROSS SECTIONS  
(Looking N 60°E)  
FRFD VEIN**



**FIGURE 13 - 1996 MAPPING & CHIP SAMPLING PROGRAM - BEACH ROAD INTRUSIVE**



**FIGURE 14 -**  
**MC 1 SAMPLING AREA - ALONGSIDE BRANCH 405 LOGGING ROAD**



**FIGURE 15 - MC CLAIM SAMPLE RESULTS**