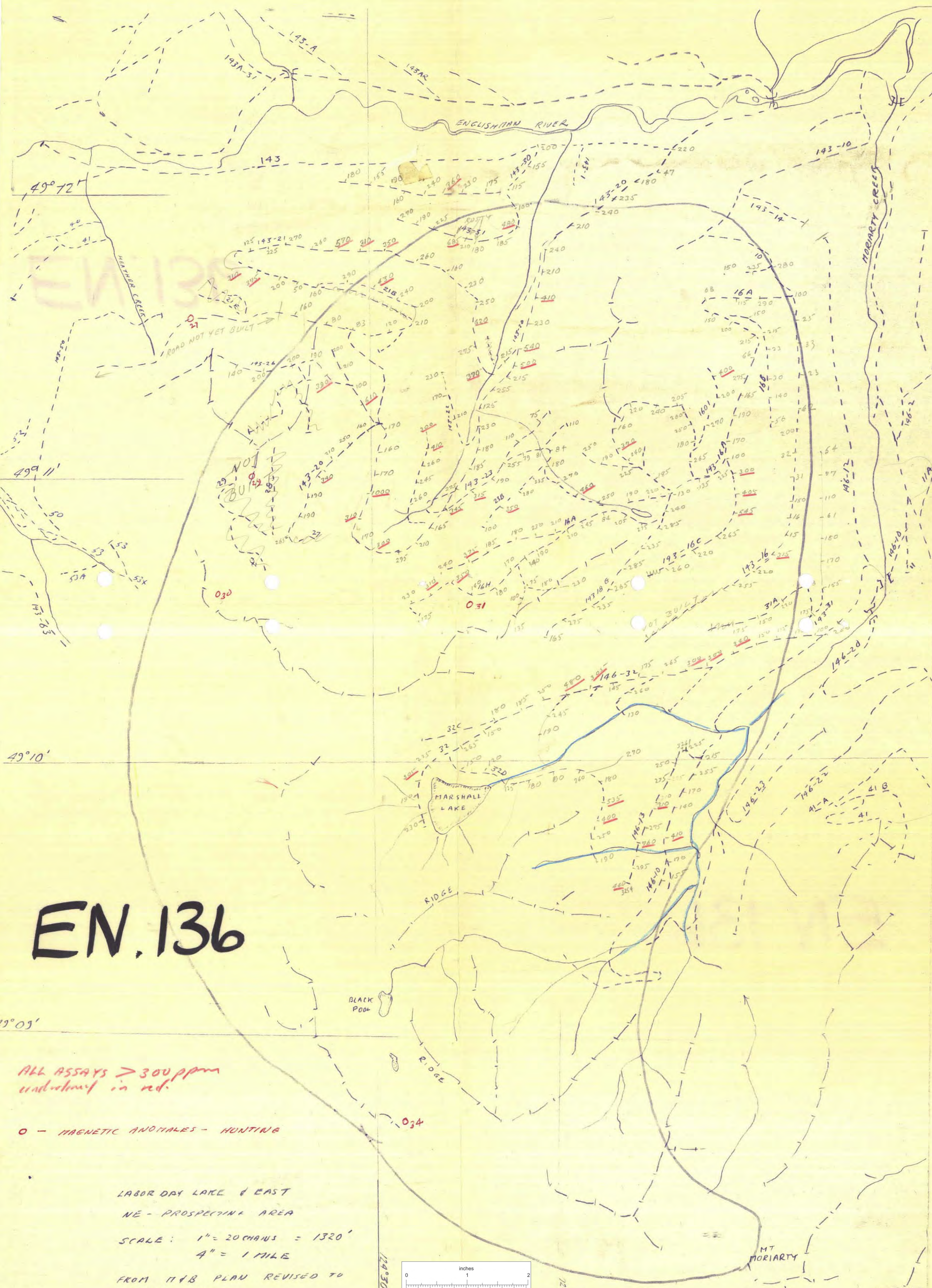


БЪЛГАРСКИ ЕДИН  
201117



# EN.136

ALL ASSAYS > 300 ppm  
underlined in red.

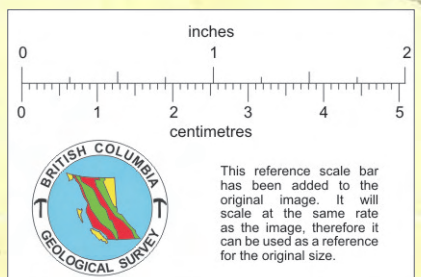
O - MAGNETIC ANOMALIES - HUNTING

LABOR DAY LAKE & EAST  
NE - PROSPECTING AREA

SCALE: 1" = 20 CHAINS = 1320'  
4" = 1 MILE

FROM 1148 PLAN REVISED TO  
MARCH 1972

D. C. DOUGLAS 1AUC72



006397